

MICRO SWITCH

A DIVISION OF MINNEAPOLIS-HONEYWELL REGULATOR COMPANY
 FREEPORT, ILLINOIS
 FED. MFR. CODE 91929

SWITCH-BASIC

CATALOG LISTING

V3-601

CK-GO100

(M) V3-601

ISSUE 8

REPLACES

RELEASE NO.

V3-601

M

DRAWING NUMBER

10

8

12

16

ISSUE

12

16

REVISIONS

A	CO15698	M B F	9 MAR 61
B	CO21688	M B F	3 OCT 66
C	CO24941	M B S	3 DEC 68
D	CO26075	M B S	27 AUG 69
E	CO26511	R E R	21 OCT 69
F	CO39182	W L W	18 FEB 78
G	CO56987	SMA	1 OCT 85
H	CO73764	D H D	30 NOV 92

CHECK

CHECK

9 MARCH 61

10 MARCH 61

10 MARCH 61

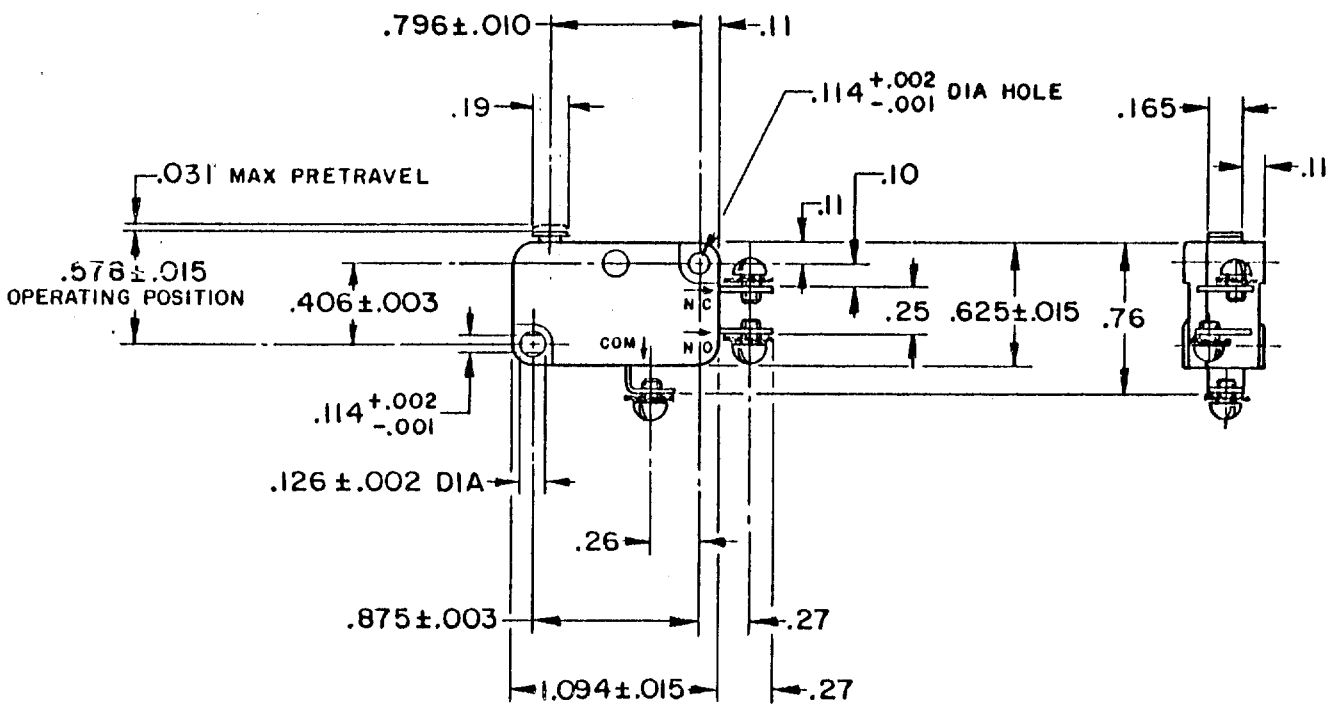
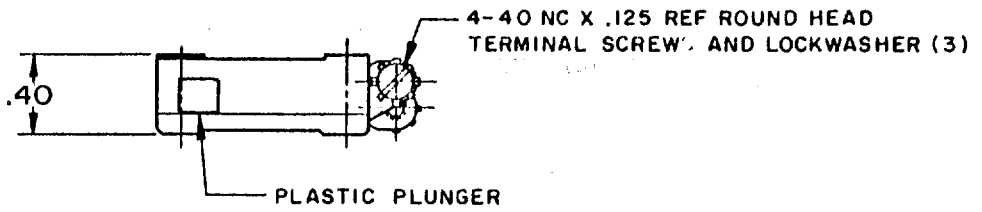
10 MARCH 61

10 MARCH 61

10 MARCH 61

10 MARCH 61

10 MARCH 61



THIS DRAWING COVERS A PROPRIETARY ITEM AND IS THE PROPERTY OF MICRO SWITCH, A DIVISION OF MINNEAPOLIS-HONEYWELL REGULATOR CO. THIS DRAWING IS NOT TO BE COPIED OR USED WITHOUT THE APPROVAL OF MICRO SWITCH.

CHARACTERISTICS	ELECTRICAL DATA	SCALE FULL
OPERATING FORCE ----- 6-14 OZ	CONTACT ARRANGEMENT S P D T	DO NOT SCALE PRINT.
RELEASE TRAVEL ----- .005-.017	L86 15.1A 1/3HP 125, 250 VAC 1/2A 125 VDC, 1/4A 250 VDC 5A 125 VAC "L"	UNLESS OTHERWISE SPECIFIED DIMENSIONS ARE IN INCHES
RELEASE FORCE ----- 4 OZ MIN		TOLERANCES ARE:
DIFFERENTIAL TRAVEL ----- .006-.016		ONE PLACE (.0) ±.030
OVERTRAVEL ----- .010-.024		TWO PLACE (.00) ±.018
FREE POSITION ----- .625 MAX		THREE PLACE (.000) ±.008
		ANGLES ±
		WEIGHT .023 LB MAX



PO-50378

DRAWN

M B F