

PART NUMBER	REV	TERMINATOR	FEED TYPE	DESCRIPTION
1528651-1	A	LEADMAKER	MECH POST FEED	CUTS CARRIER
1528651-2	A	BENCH	MECH PRE FEED	CUTS CARRIER
1528651-6	A	LEADMAKER	MECH POST FEED	CONTINUOUS CARRIER
7-1528651-1	A	LEADMAKER	MECH POST FEED	-1 AND SPARE PARTS
7-1528651-2	A	BENCH	MECH PRE FEED	-2 AND SPARE PARTS
7-1528651-6	A	LEADMAKER	MECH POST FEED	-6 AND SPARE PARTS
7-1528651-7	A	-	-	SPARE PARTS KIT

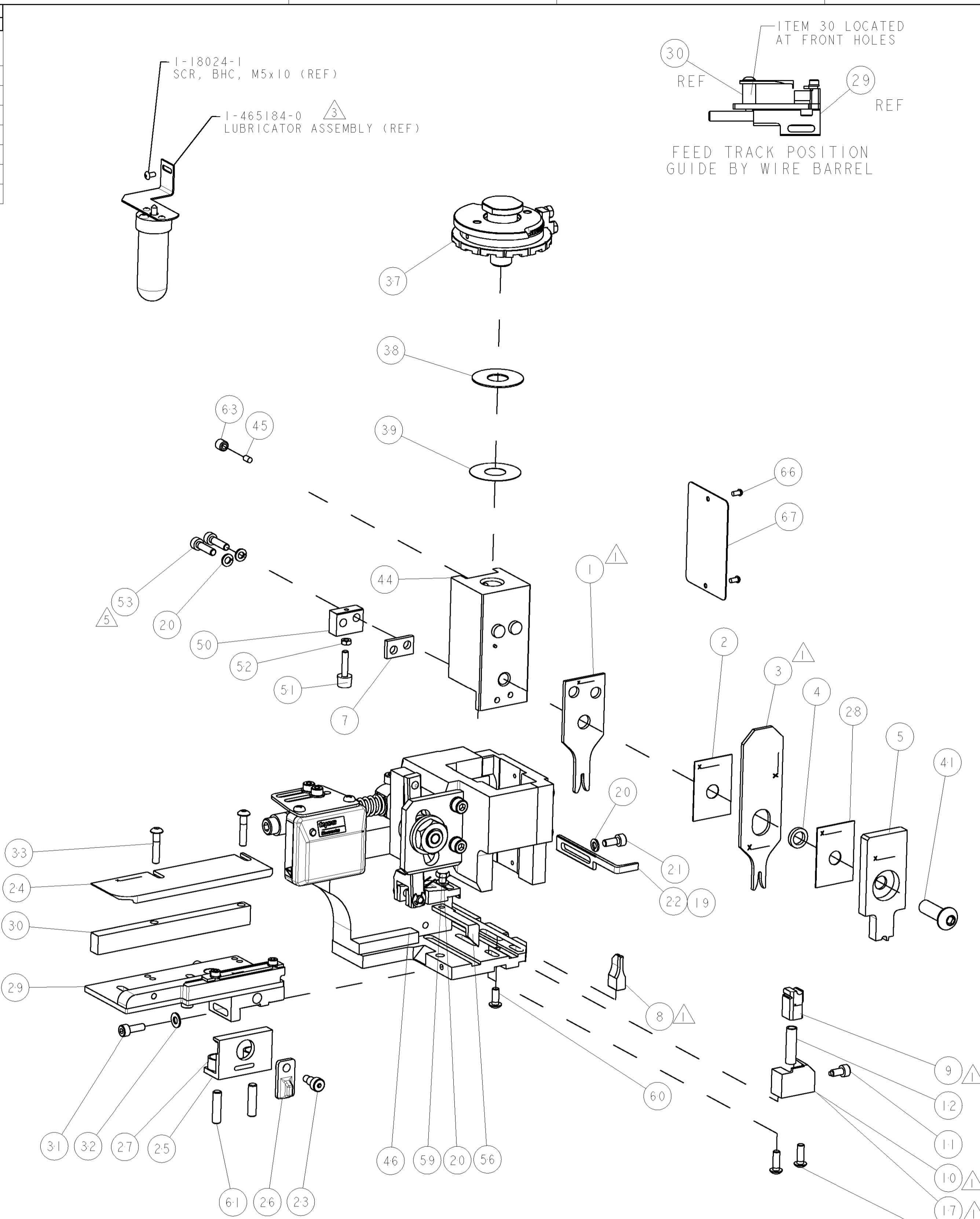
CRIMP	SIZE	TYPE	RANGE
WIRE	1.57 [0.062 IN]	F	0.14-0.50mm ² or 26-20 AWG
INSUL	2.03 [0.080 IN]	O	2.00 MAX [0.079 MAX]
WIRE STRIP LENGTH	2.54-3.33 [1.00-.131 IN]		APPL INSTRUCTIONS 408-8322 & 408-8490

TERMINAL APPL SPEC	FEED
	9.10 [0.358 IN]

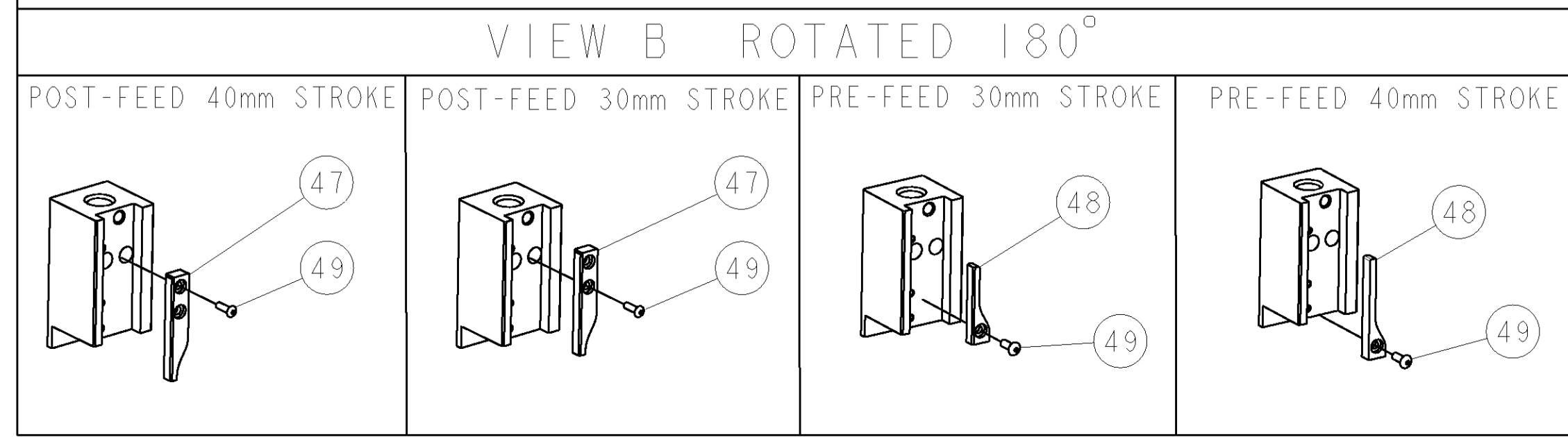
TYCO PN	MANUF'S PN	TYCO PN	MANUF'S PN
PIN		SOCKET	
1572539-1	ZN01 015 0005 (1)	1572540-1	ZN02 015 0005 (1)
1572539-2	ZN01 015 0005 (2)	1572540-2	ZN02 015 0005 (2)
1572539-5	ZN01 015 0046 (2)	1572540-5	TN02 015 0046 (1)
1572539-6	TN01 015 0046 (1)	1572540-6	TN02 015 0046 (2)
1572539-7	TN01 015 0046 (2)	1572540-7	ZN02 015 0046 (1)
1572539-8	ZN01 015 0046 (1)	1572540-8	ZN02 015 0046 (2)

WIRE SIZE	CRIMP HEIGHT	REF SETTING
0.50mm ² or 20 AWG	1.03 ± 0.05 [0.041 ± 0.002 IN]	B3
0.25mm ²	1.00 ± 0.05 [0.039 ± 0.002 IN]	B5
22 AWG	0.98 ± 0.05 [0.039 ± 0.002 IN]	B6
24 AWG	0.97 ± 0.05 [0.038 ± 0.002 IN]	B8
0.14mm ²	0.96 ± 0.05 [0.038 ± 0.002 IN]	B8
26 AWG	0.95 ± 0.05 [0.037 ± 0.002 IN]	B9

- △ RECOMMENDED SPARE PARTS.
- 2. GREASE RAM, CAM, CAM FOLLOWER AND FEED ROD LIGHTLY.
- △ CERTAIN TERMINALS REQUIRE LUBRICATION. REFER TO THE APPLICATOR INSTRUCTION SHEET FOR MORE INFORMATION.
- 4. LUBRICATE DAILY PER THE APPLICATOR INSTRUCTION SHEET SUPPLIED WITH THE APPLICATOR.
- △ ITEM 53, CUT TO LENGTH AT ASSEMBLY.
- △ CRIMP HEIGHTS PROVIDED BY AMPHENOL. ALL OTHER CRIMP DATA CALCULATED BY TYCO ELECTRONICS UK LTD.
- △ MINIMUM TENSILE VALUES APPLY:
 20 AWG = 84N 0.50mm = 73N
 22 AWG = 53N 0.25mm = 42N
 24 AWG = 39N 0.14mm or 26 AWG = 24N



* WARNING
ON INSTALLATION, SET WIRE DISC TO LARGEST WIRE SIZE SETTING. USE OF SETTINGS BELOW MIN. REQUIRED CRIMP HEIGHT SETTING WILL CAUSE DAMAGE TO CRIMP TOOLING.



-77	-76	-72	-71	-6	-2	-1	PART NO	DESCRIPTION	ITEM NO
-	-	-	-	-	-	-	-	-	84
-	-	-	-	-	-	-	-	-	83
-	-	-	-	-	-	-	-	-	82
-	-	-	-	-	-	-	-	-	81
-	-	-	-	-	-	-	-	-	80
-	-	-	-	-	-	-	-	-	79
-	-	-	-	-	-	-	-	-	78
-	-	-	-	-	-	-	-	-	77
-	-	-	-	-	-	-	-	-	76
-	-	-	-	-	-	-	-	-	75
-	-	-	-	-	-	-	-	-	74

SET UP GAGE
458637-3

LOC	DIST	REV	DATE	BY	APPV
A	66		06JUN2006	DP	MC

REV	DATE	DESCRIPTION	ITEM NO
-	-	-	73
-	-	-	72
-	-	-	71
-	-	-	70
-	-	-	69
-	-	-	68
-	-	-	67
-	-	-	66
-	-	-	65
-	-	-	64
-	-	-	63
-	-	-	62
-	-	-	61
-	-	-	60
-	-	-	59
-	-	-	58
-	-	-	57
-	-	-	56
-	-	-	55
-	-	-	54
-	-	-	53
-	-	-	52
-	-	-	51
-	-	-	50
-	-	-	49
-	-	-	48
-	-	-	47
-	-	-	46
-	-	-	45
-	-	-	44
-	-	-	43
-	-	-	42
-	-	-	41
-	-	-	40
-	-	-	39
-	-	-	38
-	-	-	37
-	-	-	36
-	-	-	35
-	-	-	34
-	-	-	33
-	-	-	32
-	-	-	31
-	-	-	30
-	-	-	29
-	-	-	28
-	-	-	27
-	-	-	26
-	-	-	25
-	-	-	24
-	-	-	23
-	-	-	22
-	-	-	21
-	-	-	20
-	-	-	19
-	-	-	18
-	-	-	17
-	-	-	16
-	-	-	15
-	-	-	14
-	-	-	13
-	-	-	12
-	-	-	11
-	-	-	10
-	-	-	9
-	-	-	8
-	-	-	7
-	-	-	6
-	-	-	5
-	-	-	4
-	-	-	3
-	-	-	2
-	-	-	1

REV	DATE	DESCRIPTION	ITEM NO						
-77	-76	-72	-71	-6	-2	-1	PART NO	DESCRIPTION	ITEM NO

TYCO ELECTRONICS	TYCO ELECTRONICS
HARRISBURG, PA 17105-3608	HARRISBURG, PA 17105-3608

APPROVED	DATE	NAME
M. CLIFFORD	03MAY2006	

PRODUCT SPEC	APPLICATION SPEC	WEIGHT
See Table	See Table	

CUSTOMER DRAWING	SCALE	SHEET	OF	REV
A1	3:5	1	1	A