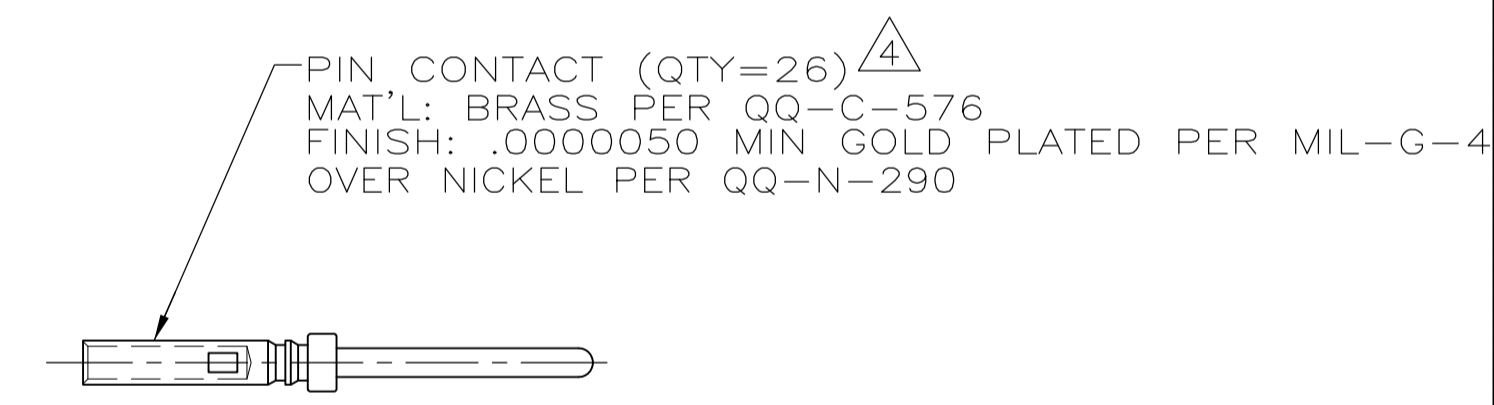
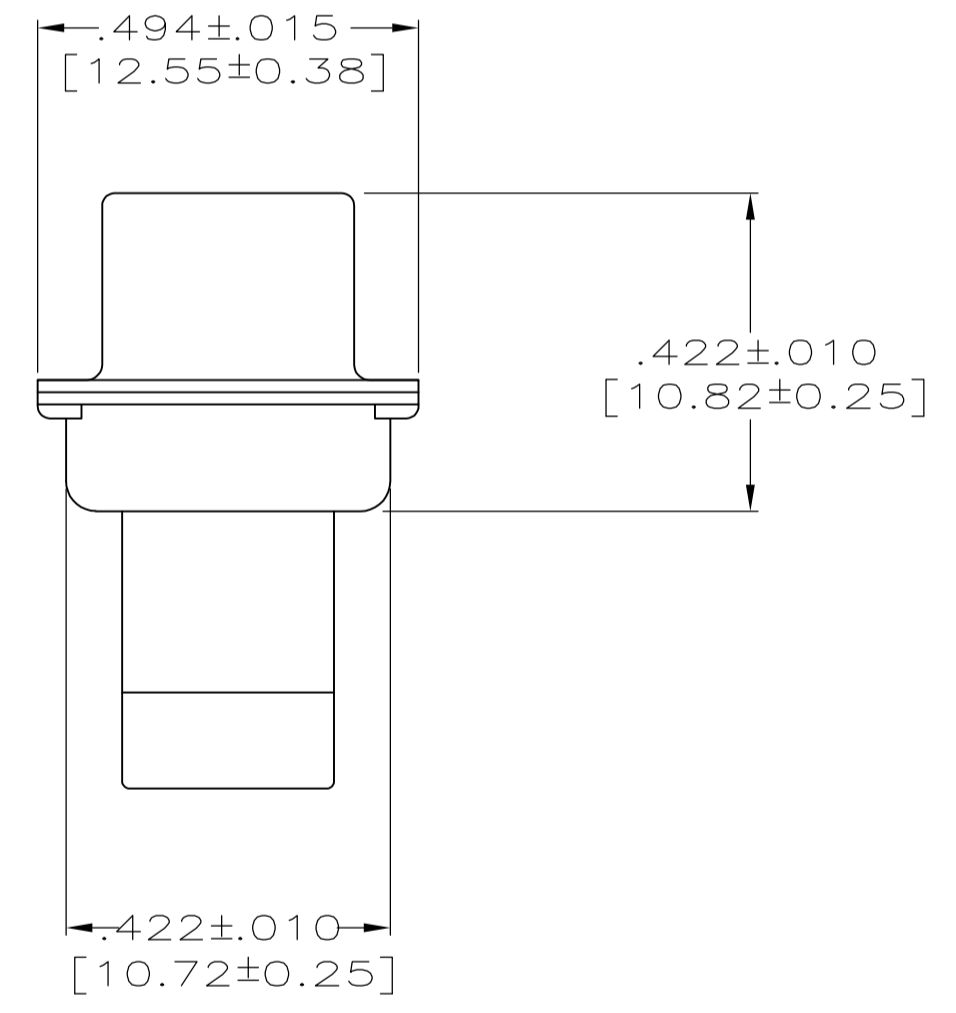
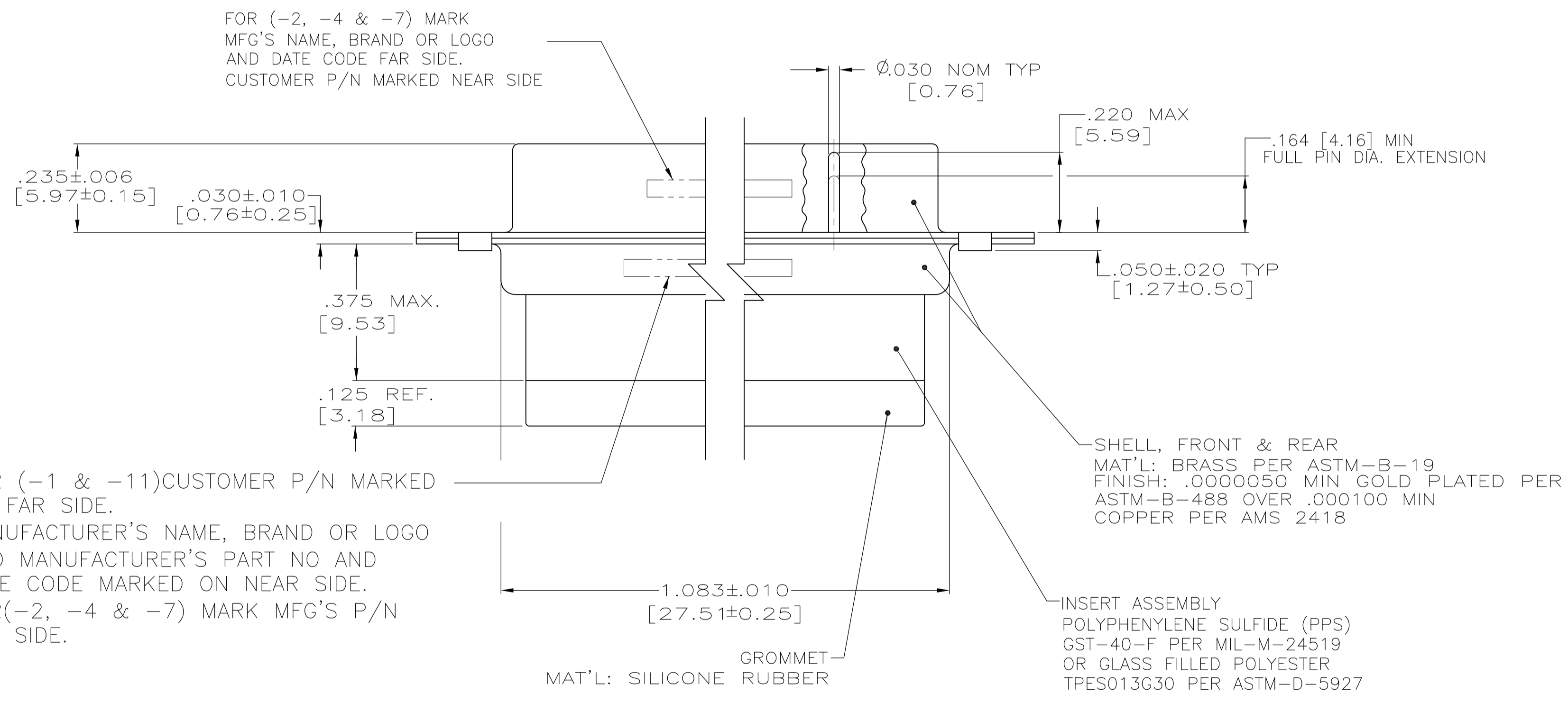


- THIS PLUG WILL MATE WITH ANY SIZE 2, 26 POSN. RCPT. IN AMPLIMITE SERIES.
  - CONNECTOR SUPPLIED WITHOUT CONTACTS; SHOWN FOR ILLUSTRATION ONLY.
  - BE-CU RETENTION CLIPS ARE INCLUDED AND INSTALLED WITH TINES POINTING TOWARDS MATING FACE.
  - ONLY PART NO. 211674-7 IS SUPPLIED WITH CONTACTS.
  - OVERALL DIMENSIONS DO NOT INCLUDE RAISED CAVITY IDENTIFICATION.
  - MARKING ON FAR SIDE REFERS TO WIDE SIDE OF KEYSTONE. NEAR SIDE REFERS TO NARROW SIDE OF KEYSTONE.
- ⚠ 100% INSPECTION REQUIRED PER BOEING 1B01:  
 A. VISUAL  
 B. DWV  
 C. IR
- ⚠ CUSTOMER REQUIRES SINGLE LOT DATE CODE.
- ⚠ SPECIAL REQUIREMENTS:  
 A. TEST TWO CONNECTORS PER LOT FOR COMPLIANCE TO GROMMET PEEL STRENGTH REQUIREMENTS.  
 B. TEST ALL CIRCUIT CAVITIES FOR MISALIGNMENT OR EXCESSIVE ADHESIVE.



⚠	1B01-032PHW	1-211674-1
⚠	B010648-0003	211674-7
		211674-4
⚠	2A065-014V-001	211674-2
⚠	1B01-032	211674-1
REMARKS	CUSTOMER PART NO.	PART NO.

THIS DRAWING IS A CONTROLLED DOCUMENT.

DIMENSIONS: INCHES (mm)	TOLERANCES UNLESS OTHERWISE SPECIFIED:	DIN C.C. THOMAS 12-19-90	12-19-90
0 PLC ± -	1 PLC ± -	CHK F. KINSEY 12-20-90	12-20-90
2 PLC ± -	3 PLC ± .005 [0.13]	APPV F. KINSEY 12-20-90	12-20-90
4 PLC ± -	ANGLES ± -	NAME	
MATERIAL SEE CALLOUTS	FINISH SEE CALLOUTS	SIZE	CAGE CODE DRAWING NO
		WEIGHT	A1 00779 C=211674
		CUSTOMER DRAWING	SCALE 4:1 SHEET 1 OF 1 REV N

**STE** TE Connectivity  
 PLUG ASSY, AMPLIMITE, 26 POSN., SIZE 2, SERIES 90, NON-MAGNETIC WITH GROMMET