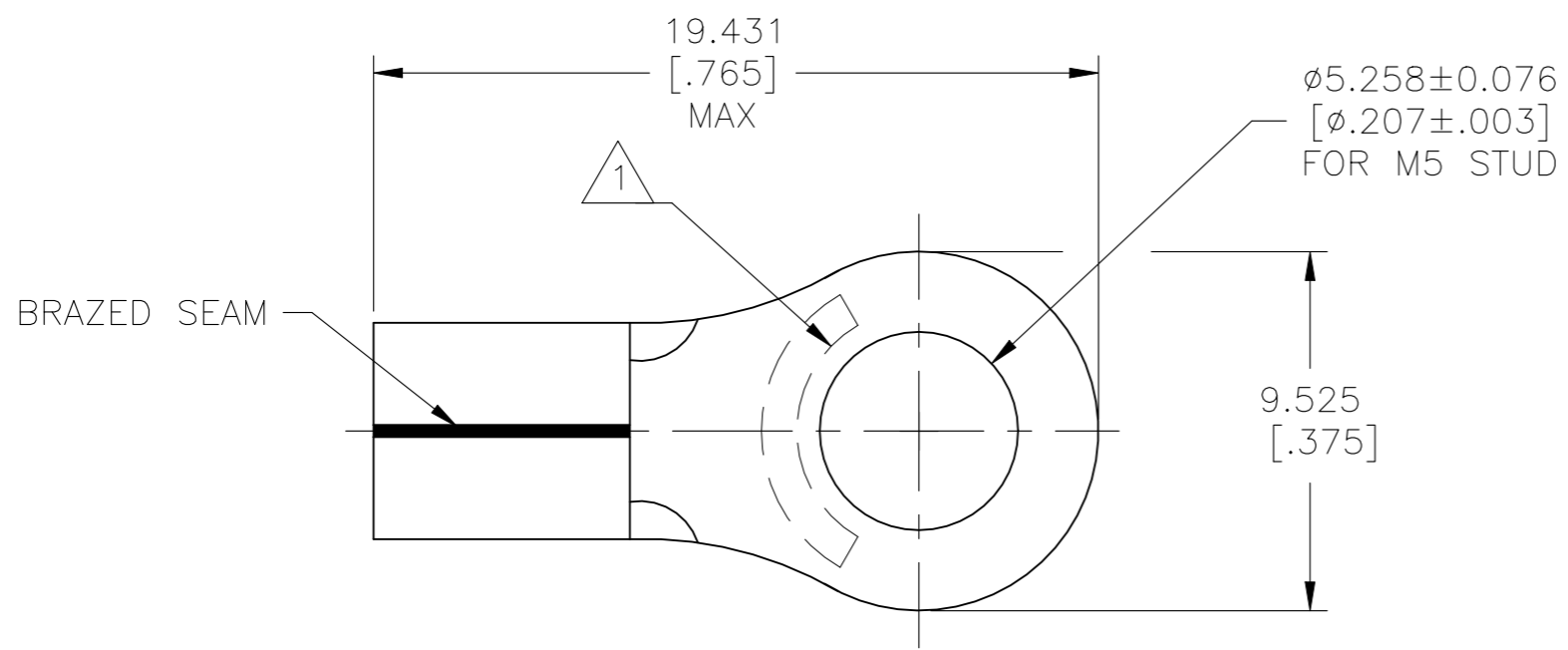
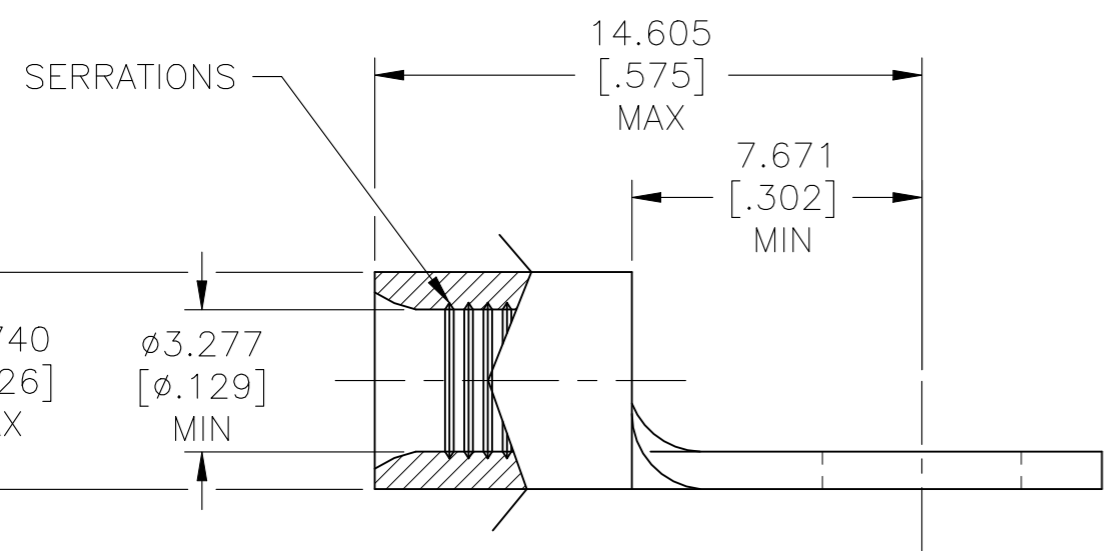


© - TE Connectivity. All Rights Reserved.

| REVISIONS |     |                           |           |        |
|-----------|-----|---------------------------|-----------|--------|
| P         | LTR | DESCRIPTION               | DATE      | APVD   |
|           | A3  | REVISED PER ECR-22-131337 | 19APR2022 | LP DCS |



|                                |
|--------------------------------|
| <b>AMP</b><br>WIRE RANGE       |
| 12-10 AWG<br>SOLID OR STRANDED |
| <b>E13288</b><br>Listed        |
| 12-10 AWG<br>STRANDED          |
| <b>LR7189</b><br>Certified     |
| 12-10 AWG<br>SOLID OR STRANDED |



- 1 STAMP AMP 12-10\* APPROX AS SHOWN
- 2 MATERIAL: COPPER PER ASTM B152
- 3 FINISH: TIN PLATE 0.00254[.000100] MIN EXT THK PER ASTM B545
- 4 MATERIAL THK: 0.990±0.051[.039±.002]

|      |              |         |
|------|--------------|---------|
| 1000 | LOOSE PIECE  | 130191  |
| QTY  | PACKAGE TYPE | PART NO |

|  |  |
|--|--|
| <b>AMP INCORPORATED</b><br>CUSTOMER SERVICE SYSTEMS                              |  |
| FOR ADDITIONAL PRODUCT INFORMATION OR COPIES OF DRAWINGS AND TECHNICAL DOCUMENTS | PRODUCT INFORMATION CENTER<br>1-800-522-6752 |
| FOR APPLICATION TOOLING INFORMATION  | TOOLING ASSISTANCE CENTER<br>1-800-722-1111  |
| FOR ORDER ENTRY  | 1-800-526-5142                               |

|  |
|--|
| MAX RECOMMENDED OPERATING TEMPERATURE:<br>170°C [338°F]  |
| VOLTAGE RATING:<br>N/A   |
| WIRE CROSS SECTIONAL AREA RANGE,<br>2.62-6.64mm <sup>2</sup> [5,180-13,100]<br>CIR MILS<br>SOLID OR STRANDED |

|  |  |
|--|--|
| THIS DRAWING IS A CONTROLLED DOCUMENT. |  |
| DIMENSIONS:<br>mm [INCHES]             | TOLERANCES UNLESS OTHERWISE SPECIFIED: |
|  | 0 PLC ± -                              |
|  | 1 PLC ± -                              |
|  | 2 PLC ± -                              |
|  | 3 PLC ± 0.127[.005]                    |
|  | 4 PLC ± -                              |
| MATERIAL                               | ANGLES ± -                             |
|  | FINISH                                 |
|  |  |

|                           |         |
|---------------------------|---------|
| DWN<br>KIRAN HOLAL        | 30JAN13 |
| CHK<br>ROHDE DANIEL       | 30JAN13 |
| APVD<br>ROHDE DANIEL      | 30JAN13 |
| PRODUCT SPEC<br>UL486 A-B |         |
| APPLICATION SPEC          |         |
| WEIGHT                    | -       |

|  |           |            |               |
|--|-----------|------------|---------------|
| TE Connectivity  |           |            |               |
| NAME<br>TERMINAL, RING TONGUE,<br>SOLISTRAND, WIRE SIZE: 12-10 AWG |           |            |               |
| SIZE   | CAGE CODE | DRAWING NO | RESTRICTED TO |
| A3   | 00779     | C-130191   | -             |
| CUSTOMER DRAWING   |           | SCALE 5:1  | SHEET 1 OF 1  |
|  |           | REV A3     |               |