

# ABE7ACC11

connection sub-base accessory - redundant  
input sub-base



## Main

Accessory / separate part designation	Redundant input sub-base
Accessory / separate part destination	PLC
Accessory / separate part category	Connection accessories
Accessory / Separate Part Type	Splitter sub-base
Range of Product	Modicon ABE7
Sub-base type	Redundant input sub-base
Number of Channels	16
Quantity per Set	Set of 1

## Complementary

Channel splitting	2 x 16
Net Weight	0.17 lb(US) (0.075 kg)

## Ordering and shipping details



Category	22375 - INTERFACE MODULE(ABA,R,S)
Discount Schedule	CP2
GTIN	3389110864748
Nbr. of units in pkg.	1
Package weight(Lbs)	4.02 oz (114 g)
Returnability	No
Country of origin	LV

## Packing Units

Unit Type of Package 1	PCE
Package 1 Height	2.83 in (7.2 cm)
Package 1 width	3.15 in (8 cm)
Package 1 Length	3.74 in (9.5 cm)
Unit Type of Package 2	S03
Number of Units in Package 2	24
Package 2 Weight	7.14 lb(US) (3.24 kg)
Package 2 Height	11.81 in (30 cm)
Package 2 width	11.81 in (30 cm)
Package 2 Length	15.75 in (40 cm)

## Offer Sustainability

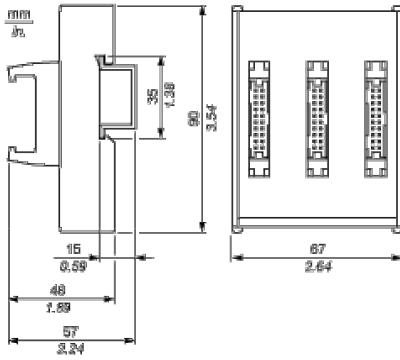
California proposition 65	WARNING: This product can expose you to chemicals including: Lead and lead compounds, which is known to the State of California to cause cancer and birth defects or other reproductive harm. For more information go to <a href="http://www.P65Warnings.ca.gov">www.P65Warnings.ca.gov</a>
RECh Regulation	<a href="#">RECh Declaration</a>
RECh free of SVHC	Yes
EU RoHS Directive	Pro-active compliance (Product out of EU RoHS legal scope) <a href="#">EU RoHS Declaration</a>
Mercury free	Yes

RoHS exemption information	 Yes
China RoHS Regulation	 <a href="#">China RoHS Declaration</a>
WEEE	The product must be disposed on European Union markets following specific waste collection and never end up in rubbish bins.

### Contractual warranty

Warranty	18 months
----------	-----------

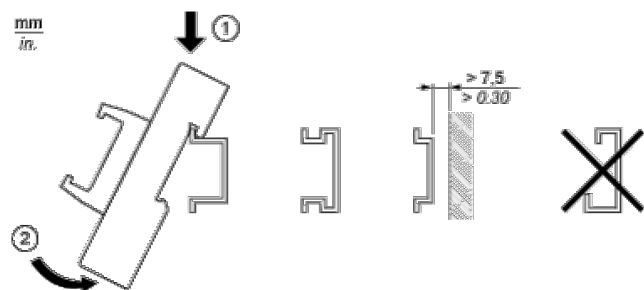
Dimensions



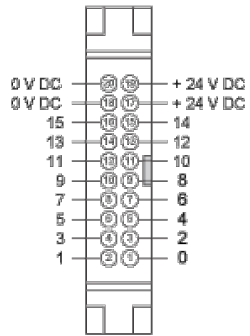
---

Mounting

---



## HE10 16 Channels



## Wiring Diagram

