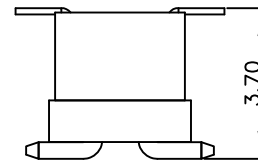
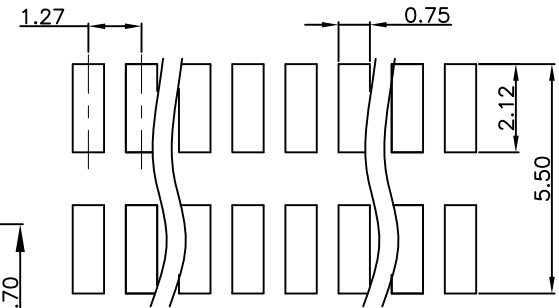
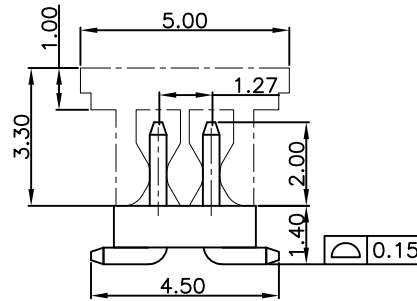
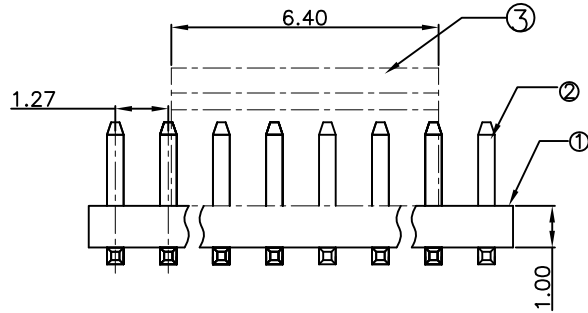
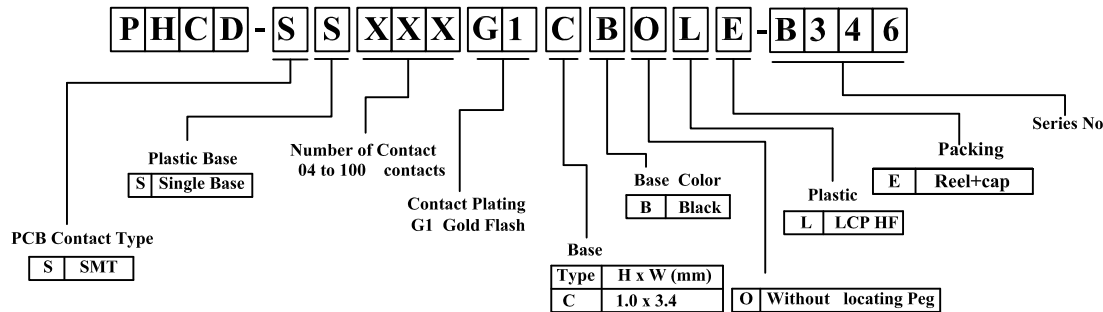


Compliance with:  
 USB3.2 Gen2 Type C(10Gbps),  
 USB3.2 Gen1(5Gbps).  
 Mating with:  
 "FHCD-SGXXXG1NBOL-E-F01"  
 Mating Height: 3.70mm



Mating Drawing

P.C.B LAYOUT



L=4.6mm

RoHS compliant

REV.	DESCRIPTION	DATE
A	New Drawing	2020/02/17

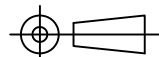
LTR	Part Name	Material	Description	QTY
1	Housing	LCP HF UL94V-0	260°C for 10 Seconds . Initial : 1000M Ohms Min. After Test : 500M Ohms Min.	1
2	Contact	Brass	Current Rating : 1.0A Initial : 20m Ohms Max. After Test : 40m Ohms Max.	XX
3	CAP	LCP UL94V-0	260°C for 10 Seconds .	1

Temperature Rating : -40°C ~ +125°C .  
 Dielectric Withstanding Voltage : 500V AC/Min

**Superior Tech Co., Ltd.**

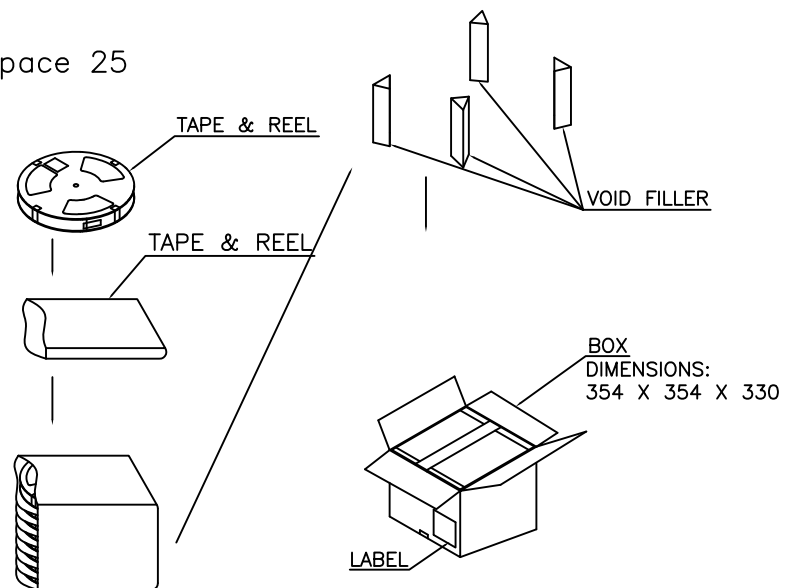
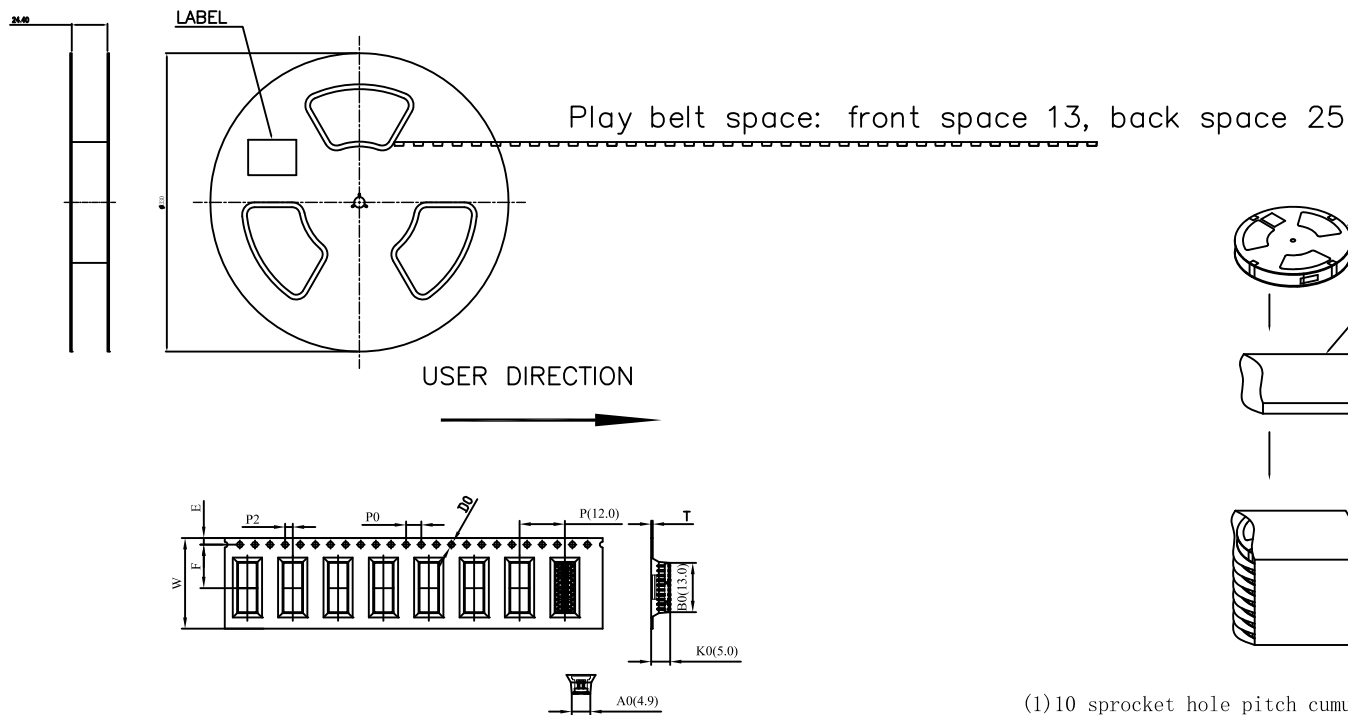
General Tolerance		TITLE	1.27x1.27mm Pin Header SMT Dual Row	
X.	± 0.5	DRAWN	DATE	NO.
.X	± 0.3		02-17-20'	002
.XX	± 0.2	CHECK	DATE	PART NO.
.XXX	± 0.1	APPROVED	DATE	PHCD-SSXXXG1CBOLE-B346
Angle	± 5°			CUSTOMER NO.

REV.	UNIT	SCALE
A	mm	1:1



(Q2-R03-01A) ST-R05-07

REV.	DESCRIPTION	DATE
A	New Drawing	2022/05/30



- (1) 10 sprocket hole pitch cumulative tolerance  $\pm 0.20$ .
- (2) Carrier camber is within 1 mm in 250mm.
- (3) All dimensions meet EIA-481-C requirements.
- (4) Material: **Transparent PS** Thickness:  $0.40 \pm 0.05$  (JG-TR-400)
- (5) Reel: 13" \* 4", Carrier Length: 12.576 M/R.
- (6) Package quantity: 1000.PCS.
- (7) Lot Dimension angle is  $3^\circ$ .

ITEM	W	A0	B0	K0	K1	P	F	E	D0	D1	P0	P2	T
DIM	24.00 $\pm 0.30$	4.9 $\pm 0.10$	13.0 $\pm 0.02$	5.0 $\pm 0.10$	$\pm 0.10$	12.0 $\pm 0.10$	11.50 $\pm 0.10$	1.75 $\pm 0.10$	1.50 $\pm 0.10$	0.00 $\pm 0.10$	4.00 $\pm 0.10$	2.00 $\pm 0.10$	0.40 $\pm 0.05$
ALTERNATE													

The number of PINs	Quantity per volume	Number of boxes / rolls	Box / quantity
2*10PIN	1000PCS/Volume	10PCS	10000PCS

**Superior Tech Co., Ltd.**

<b>General Tolerance</b>		<b>TITLE</b> PHCD-SS020G1CBOLE-B346_Packing	
X. $\pm 0.5$		<b>DRAWN</b> Tom	<b>DATE</b> 2022/05/30
.X $\pm 0.3$		<b>CHECK</b>	<b>PART NO.</b> PHCD-SS020G1CBOLE-B346
.XX $\pm 0.2$		<b>APPROVED</b>	<b>CUSTOMER NO.</b> DK
.XXX $\pm 0.1$			
Angle	$\pm 5^\circ$		

<b>REV.</b> A	<b>UNIT</b> mm	<b>SCALE</b> 1:1
------------------	-------------------	---------------------

