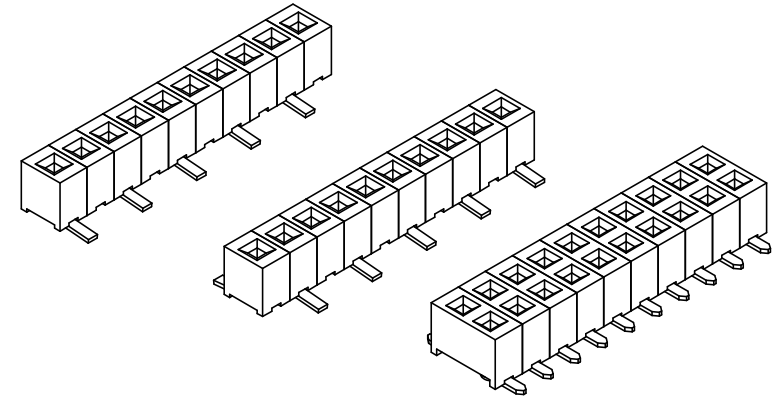
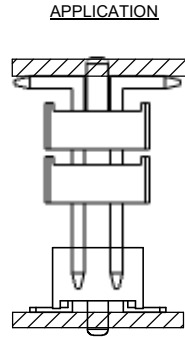
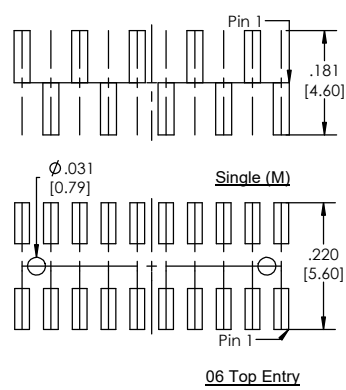
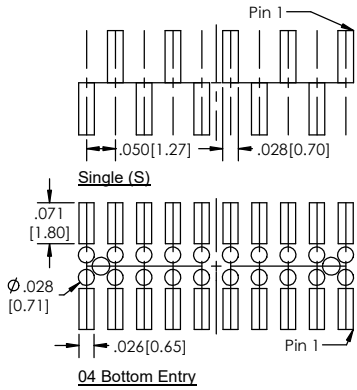
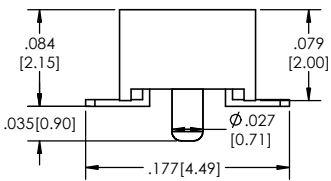
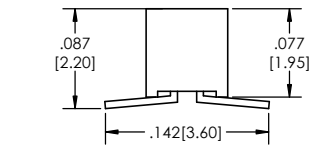
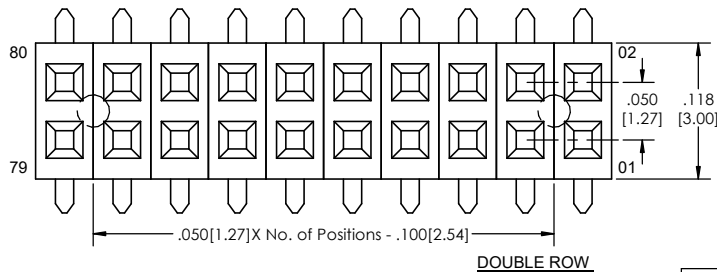
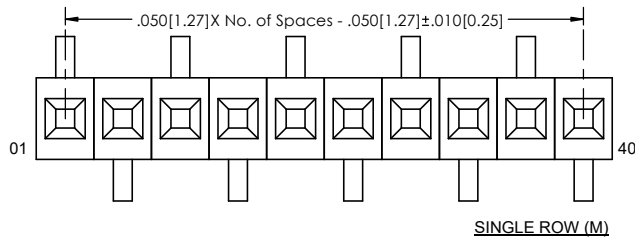
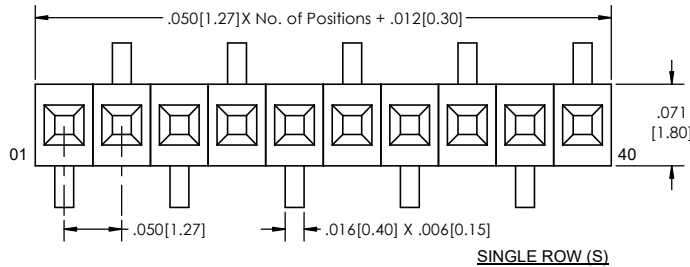
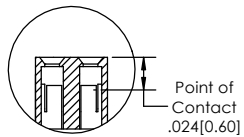


Recommended P.C. Board Layout
SCALE 6:1



LSSH-5 **(A)** - **(B)** - **(C)** - **(D)** - **(E)** - **(F)** - **(G)** - **(H)** - **(I)** - **(J)**

- A. Pins Per Row
 - 1 through 40
- B. Row Specification
 - S= Single Row
 - D= Double Row
- C. Surface Mount
 - 04 Bottom Entry
 - 06 Top Entry
- D. Plating Options
 - See Plating Options below
- E. Footprint Orientation (Single Row)
 - S= Pin 1 right
 - M= Pin 1 left
- F. Polarized Position
 - Leave blank if not needed
 - If required, specify empty pin position
 - e.g. 012 for Pin 12
- G. Packing Information
 - TR= Tape and Reel
 - TB= Tube
- H. Cap Option
 - P= Pick and Place Cap
 - O= No Cap
- I. Alignment Pin Option
 - Leave blank if not needed
 - Ap= With
- J. Lead Free



Plating options	
G	10µ Gold on Contact Area/ Flash on Tail
F	Gold Flash over Entire Pin
H	30µ Gold on Contact Area/ Matte Tin on Tail

Specifications:
 Current Rating: 1.0 Ampere
 Insulation Resistance: 1000M Ohms Min.
 Dielectric Withstanding: 300V AC
 Contact Resistance: 20M Ohms Max.
 Operation Temperature: -40°C to +125°C
 Max. Process Temperature
 Peak: 260°C up to 20 secs.
 Process: 230°C up to 60 secs.
 Wave: 260°C up to 6 secs.
 Manual Solder: 350°C up to 5 secs.

Materials:
 Contact Material: Phosphor Bronze
 Insulator Material: High Temperature LCP Plastic
 Plating: Au over Ni

Tails may be clipped to achieve specific dimensions.

Products cut to specific sizes are uncancellable/ nonreturnable.
 Parts are subject to change without notice.

ROHS COMPLIANT

PROPRIETARY AND CONFIDENTIAL
 THE INFORMATION CONTAINED IN THIS DRAWING IS THE SOLE PROPERTY OF Major League Electronics. ANY REPRODUCTION IN PART OR AS A WHOLE WITHOUT THE WRITTEN PERMISSION OF Major League Electronics IS PROHIBITED.

UNLESS OTHERWISE SPECIFIED:		NAME		DATE	
DIMENSIONS ARE IN INCHES		DRAWN	EOW	04/13/16	
TOLERANCES:		CHECKED	GWE	04/13/16	
ONE DECIMALS ±.100		ENG APPR.			
TWO DECIMALS ±.010		MFG APPR.			
THREE DECIMALS ±.005		ADDRESS:			
FOUR DECIMALS ±.002		2533 Centennial Blvd. Jeffersonville, In 47130 Phone: 812-670-4174 Fax: 812-670-4175 E-Mail: mle@mlelectronics.com			
NEXT ASSY	USED ON	TITLE: LSSH-5 SERIES		SIZE	REV
		C		DWG. NO.	G
APPLICATION	DO NOT SCALE DRAWING	SCALE 12:1		SHEET 1 OF 1	