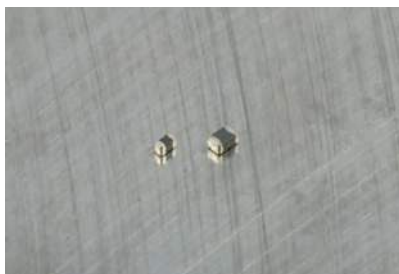




Mid Current Chip Beads

MCB05 & 10



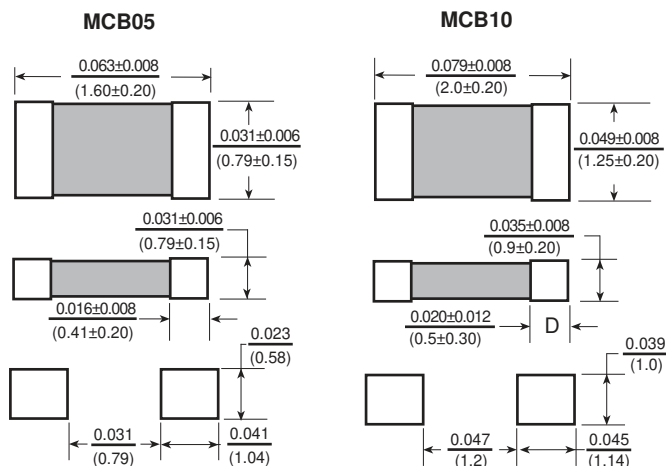
MCB05

Allied Part Number	Impedance (Ω) @ 100 MHz +/- 25%	DC Resistance (Ω) Max.	Rated Current (mA)
MCB05-100-RC	10	0.03	1000
MCB05-110-RC	11	0.03	1000
MCB05-120-RC	12	0.05	1000
MCB05-190-RC	19	0.05	1000
MCB05-300-RC	30	0.06	800
MCB05-310-RC	31	0.06	800
MCB05-320-RC	32	0.06	800
MCB05-400-RC	40	0.06	800
MCB05-470-RC	47	0.06	600
MCB05-500-RC	50	0.06	600
MCB05-560-RC	56	0.06	600
MCB05-600-RC	60	0.06	600
MCB05-700-RC	70	0.10	600
MCB05-750-RC	75	0.10	600
MCB05-800-RC	80	0.10	600
MCB05-101-RC	100	0.15	600
MCB05-121-RC	120	0.15	600
MCB05-151-RC	150	0.15	600
MCB05-181-RC	180	0.18	400
MCB05-201-RC	200	0.18	400
MCB05-221-RC	220	0.18	400
MCB05-241-RC	240	0.25	400
MCB05-301-RC	300	0.25	400
MCB05-331-RC	330	0.30	400
MCB05-431-RC	430	0.30	400
MCB05-451-RC	450	0.30	400
MCB05-471-RC	470	0.30	400
MCB05-601-RC	600	0.30	400
MCB05-751-RC	750	0.45	300
MCB05-801-RC	800	0.45	300
MCB05-102-RC	1000	0.45	300
MCB05-152-RC	1500	0.70	150

MCB10

Allied Part Number	Impedance (Ω) @ 100 MHz +/- 25%	DC Resistance (Ω) Max.	Rated Current (mA)
MCB10-070-RC	7	0.06	1000
MCB10-090-RC	9	0.06	1000
MCB10-110-RC	11	0.06	1000
MCB10-170-RC	17	0.06	1000
MCB10-260-RC	26	0.06	1000
MCB10-300-RC	30	0.06	1000
MCB10-320-RC	32	0.06	1000
MCB10-330-RC	33	0.10	800
MCB10-400-RC	40	0.10	800
MCB10-600-RC	60	0.06	800
MCB10-700-RC	70	0.10	800
MCB10-800-RC	80	0.10	800
MCB10-101-RC	100	0.15	600
MCB10-121-RC	120	0.15	600
MCB10-151-RC	150	0.15	600
MCB10-181-RC	180	0.18	600
MCB10-221-RC	220	0.18	600
MCB10-241-RC	240	0.18	600
MCB10-301-RC	300	0.18	600
MCB10-331-RC	330	0.18	600
MCB10-401-RC	400	0.18	600
MCB10-501-RC	500	0.25	500
MCB10-601-RC	600	0.25	500
MCB10-751-RC	750	0.30	400
MCB10-102-RC	1000	0.30	400
MCB10-152-RC	1500	0.40	400
MCB10-182-RC	1800	0.55	400
MCB10-202-RC	2000	0.55	400

All specifications subject to change without notice.

**Features**

- Surface mount EMI suppression components
- Current Rating up to 1A
- Nickel barrier termination for excellent resistance to solder heat
- Multi layer technology
- Flow and reflow soldering

Electrical**Impedance Range:** MCB05 from 10 Ω to 1500 Ω MCB10 from 7 Ω to 2000 Ω **Tolerance:** 25% over entire range**Operating Range:** -55 $^{\circ}$ C ~ +125 $^{\circ}$ C**Storage Temp:** Under 25 $^{\circ}$ C at 40~60% Humidity**Rated Current:** Based on temp rise not to exceed 30 $^{\circ}$ C**Resistance to Solder Heat**Pre-Heat 150 $^{\circ}$ C, 1 minute

Solder Composition: Sn/Ag3.0/Cu0.5

Solder Temp: 260 \pm 5 $^{\circ}$ C for 10sec \pm 1 sec.

Minimum of 75% of Electrode covered with new solder.

Impedance within 30% of initial value.

Test Equipment**(Z):** HP4291A RF Impedance/Material Analyzer**(RDC):** Chen Hwa 502BC**Physical****Packaging:** MCB05 - 4000 per 7 inch reel.

MCB10 - 4000 per 7 inch reel.

Marking: None