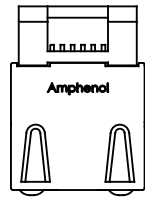
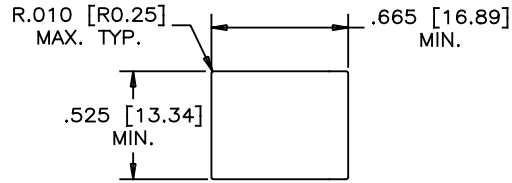


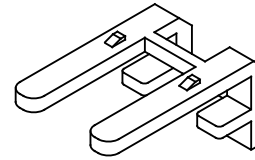
REVISIONS			
REV	DESCRIPTION, ECN, EAR NO.	DATE	APP'D
A	PROPOSAL	MAR19/15	LCHAN



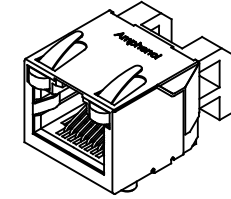
TOP VIEW



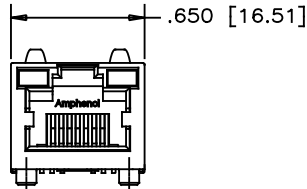
RECOMMENDED PANEL CUTOUT



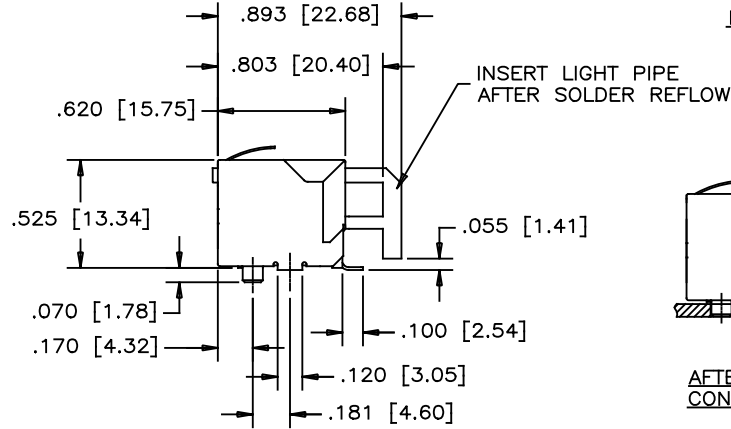
LIGHT PIPE



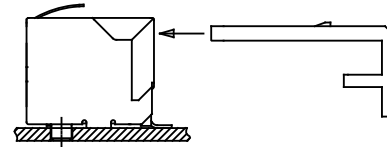
FINISH CONNECTOR



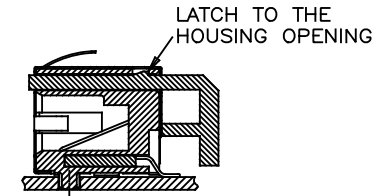
FRONT VIEW



SIDE VIEW



AFTER SOLDER REFLOW, LOAD LIGHT PIPE THROUGH THE CONNECTOR REAR ACCESS IN THE DIRECTION AS SHOWN



LATCH TO THE HOUSING OPENING

MATERIALS:

PLASTIC HOUSING: HIGH TEMPERATURE ENGINEERING THERMOPLASTIC  
FLAMMABILITY RATING UL 94V-0, BLACK

CONTACTS:

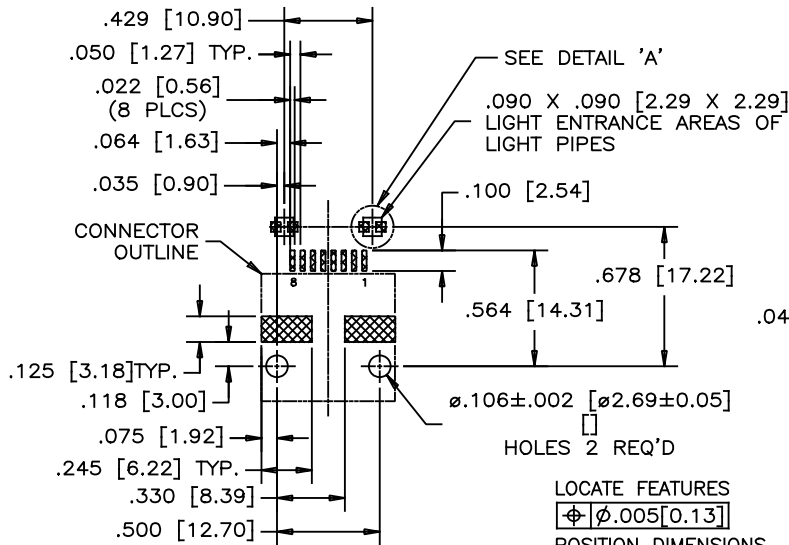
PHOSPHOR BRONZE  
PLATING: 20 μ" [1.27 MICRONS]  
MIN. GOLD ON MATING SURFACES.  
50 μ" [1.27 MICRONS]  
MIN. NICKEL UNDERPLATE.  
100 μ" [2.54 MICRONS]  
MIN. MATTE TIN ON CONTACT TAILS.

SHIELD:

COPPER ALLOY  
PLATING: NICKEL

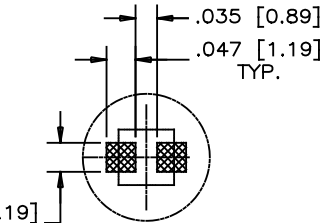
LIGHT PIPE:

CLEAR POLYCARBONATE  
FLAMMABILITY RATING UL 94V-0



RECOMMENDED P.C.B. LAYOUT  
(COMPONENT SIDE OF BOARD)

LOCATE FEATURES  
Φ .005 [0.13]  
POSITION DIMENSIONS  
ARE BASIC



DETAIL 'A'  
(ENLARGED)  
SMT LED SOLDER PAD  
(SMT LED TO BE PROVIDED  
BY THE CUSTOMER)

PART NUMBER: RJ SSE-5581



UNLESS SPECIFIED OTHERWISE	DRAWN AMY.Z	DATE MAR19/15
PRIMARY UNITS INCH	CHECKED L.CHAN	MAR19/15
SECONDARY MILLIMETER	M.E. APP'D	
REFERENCE IN PARENTHESES	Q.A. APP'D	
GENERAL TOLERANCES	DWG APPR.	
1 DECIMAL PLACE ±0.025	ENG. REL. NO.	
2 DECIMAL PLACES ±0.020	REF. EAR# RJ15032	
3 DECIMAL PLACES ±0.015	THIRD ANGLE PROJECTION	
ANGULAR DEGREES ±1.0°	DO NOT SCALE DRAWING	

Amphenol Canada Corp. www.amphenolcanada.com	
TITLE	SURFACE MOUNT, RJ45 8 POSITION, 8 CONTACTS, SHIELD, WITH LIGHT PIPES - RoHS COMPLIANT
DWG. NO.	P-RJSSE-5581
REV	A
CODE ID NO. 03554	DWG SIZE: C SCALE: N/A SHEET 1 OF 1