



SAW Components

Data Sheet B7809

Data Sheet

A large, stylized, 3D-rendered graphic of the EPCOS logo. The letters "EPCOS" are rendered in a white, glowing, sans-serif font, appearing to be part of a larger, curved structure that resembles the company's logo symbol. The background is dark and textured, with a faint map of the world visible.



SAW Components

B7809

Low-Loss Filter for Mobile Communication

2441,75 MHz

Data Sheet



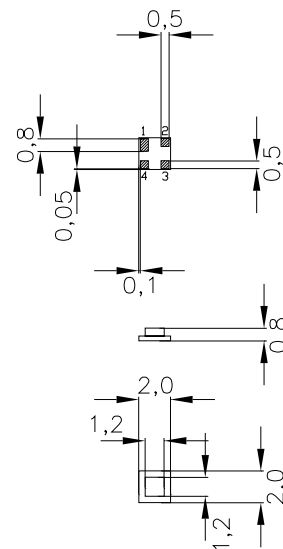
Chip sized SAW package

Features

- Low-loss RF filter for Bluetooth
- Low amplitude ripple
- Usable passband 83,5 MHz
- No matching network required for operation at 50 Ω
- Ceramic package for Surface Mounted Technology (SMT)

Terminals

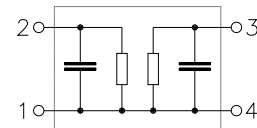
- Gold-plated Ni



Dimensions in mm, approx. weight 0,01 g

Pin configuration

- 2 Input
- 3 Output
- 1, 4 Ground



Type	Ordering code	Marking and Package according to	Packing according to
B7809	B39242-B7809-A510	C61157-A7-A63	F61074-V8099-Z000

Electrostatic Sensitive Device (ESD)

Maximum ratings

Operating temperature range	T	- 40/+ 85	°C	source impedance 50 Ω, 2400,0 ... 2483,5 MHz
Storage temperature range	T_{stg}	- 40/+ 85	°C	
DC voltage	V_{DC}	0	V	
Input Power max.	P_{IN}	15,0	dBm	



Data Sheet



Characteristics

Operating Temperature Range: $T = -40^{\circ}\text{C}$ to 85°C
 Terminating source impedance: $Z_S = 50\Omega$
 Terminating load impedance: $Z_L = 50\Omega$

		min.	typ.	max.	
Center frequency	f_C	—	2441,75	—	MHz
Maximum insertion attenuation	α_{\max}				
	2400,0 ... 2483,5 MHz	—	2,6	3,5	dB
Amplitude ripple	$\Delta\alpha$				
	2400,0 ... 2483,5 MHz	—	1,2	2,2	dB
	2400,0 ... 2483,5 MHz *)	—	1,2	2,0	dB
Attenuation	α				
	0,00 ... 1785,00 MHz	15	17	—	dB
	1785,00 ... 1850,00 MHz	20	24	—	dB
	1850,00 ... 1950,00 MHz	22	26	—	dB
	1950,00 ... 2170,00 MHz	24	29	—	dB
	2170,00 ... 2250,00 MHz	20	24	—	dB
	2250,00 ... 2300,00 MHz	18	20	—	dB
	2600,00 ... 3000,00 MHz	20	25	—	dB
	3000,00 ... 4000,00 MHz	15	18	—	dB
	4000,00 ... 5000,00 MHz	12	15	—	dB

*) $T = -30^{\circ}\text{C}$ to 85°C



SAW Components

B7809

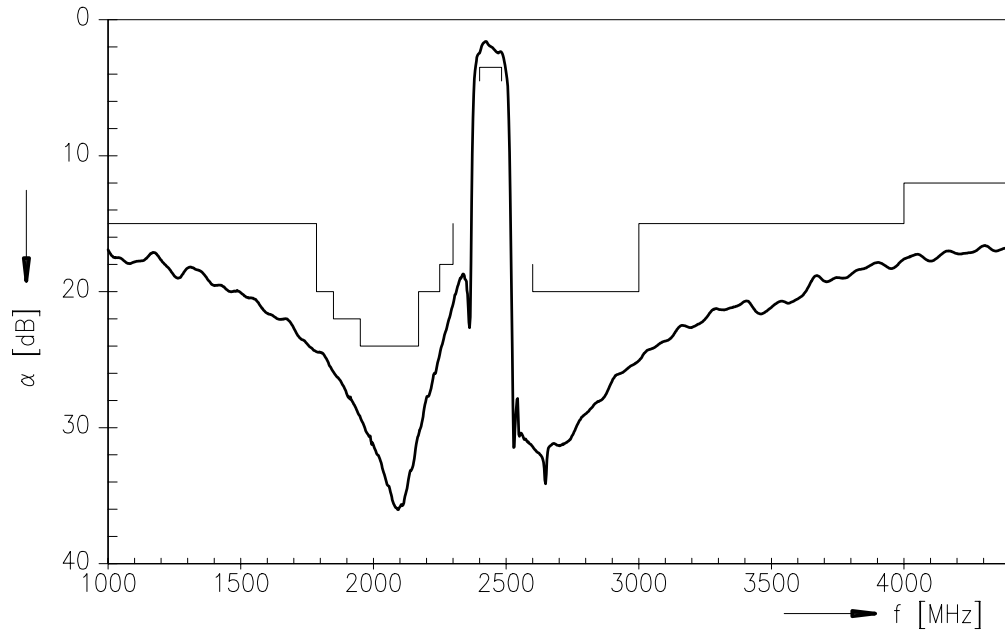
Low-Loss Filter for Mobile Communication

2441,75 MHz

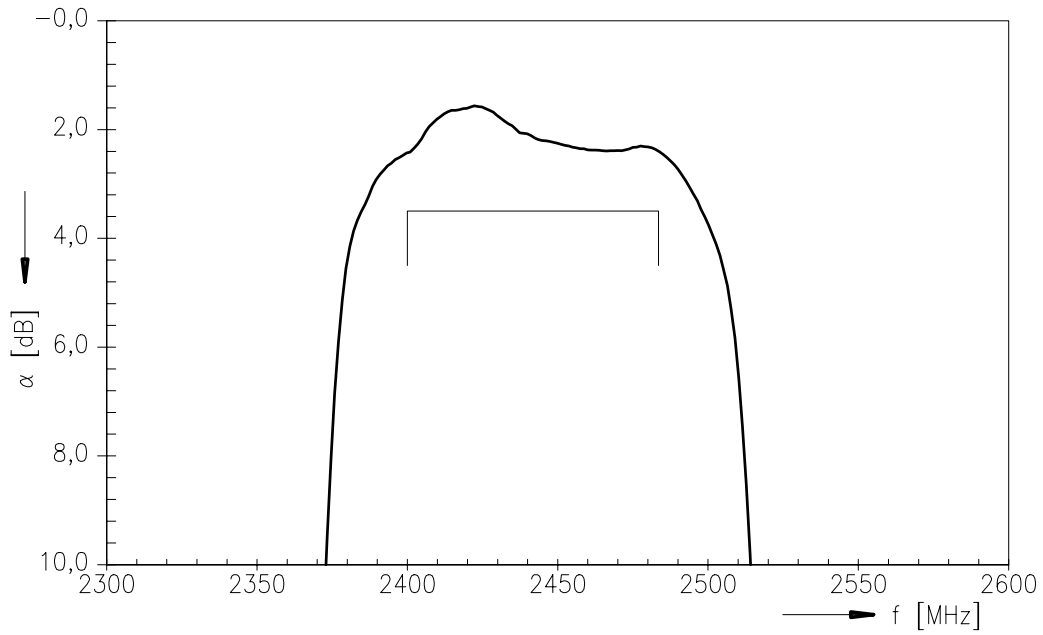
Data Sheet



Transfer function



Transfer function (passband)





SAW Components

B7809

Low-Loss Filter for Mobile Communication

2441,75 MHz

Data Sheet



Published by EPCOS AG

SAW MC WT, P.O. Box 80 17 09, 81617 Munich, GERMANY

TEL +49 89 636 09, FAX +49 89 636-2 26 89

© EPCOS AG 2002. Reproduction, publication and dissemination of this brochure and the information contained therein without EPCOS' prior express consent is prohibited.

Purchase orders are subject to the General Conditions for the Supply of Products and Services of the Electrical and Electronics Industry recommended by the ZVEI (German Electrical and Electronic Manufacturers' Association), unless otherwise agreed.

This brochure replaces the previous edition.

For questions on technology, prices and delivery please contact the Sales Offices of EPCOS AG or the international Representatives.

Due to technical requirements components may contain dangerous substances. For information on the type in question please also contact one of our Sales Offices.