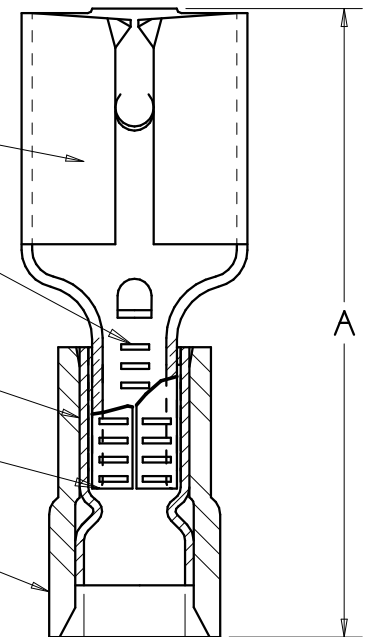
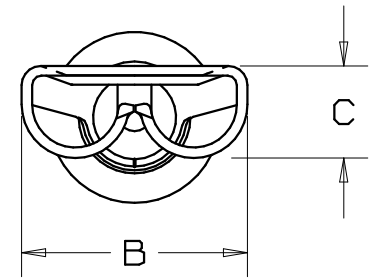


| PART NUMBER | | TAB SIZE | WIRE RANGE AWG (mm ²) | HOUSING COLOR | MAX INSUL DIA | DIMENSIONS in | | |
|-------------|----------|-------------------------------------|---|------------------|---------------------|-----------------------|-----------------------|-----------------------|
| PREFIX | PKG | | | | | A ± 0.03 (0.8) | B ± 0.01 (0.3) | C ± 0.01 (0.3) |
| DNF18-206 | -C -M | .187/.205 X .020 (4.8/5.2 X 0.5) | 22-18 (.38-1.0) | RED | .137 (3.48) | .76 (19.3) | .25 (6.4) | .12 (3.0) |
| DNF14-206 | -C -M | .187/.205 X .020 (4.8/5.2 X 0.5) | 16-14 (1.5-2.5) | BLUE | .162 (4.11) | .76 (19.3) | .25 (6.4) | .12 (3.0) |



NOTES:

- UL LISTED AND CSA CERTIFIED FOR:
 - 300V. MAX. VOLTAGE RATING
 - STRANDED COPPER WIRE ONLY
 - 194° F (90° C) MAX. TEMP. RATING
- PACKAGE QTY: STD. PKG. -C= 100
BULK PKG. -M= 1000
- MATERIAL:
 - STAMPING: .016 (0.41) THK BRASS, TIN PLATED
 - SLEEVE: BRASS, TIN PLATED
 - HOUSING: NYLON
- WIRE STRIP LENGTH $9/32 \begin{matrix} +1/32 \\ -0 \end{matrix}$ (7.1 $\begin{matrix} +0.8 \\ -0 \end{matrix}$)
- INITIAL INSERTION FORCE - 12 LB. (53 N) MAX
INITIAL WITHDRAWAL FORCE - 12 LB. (53 N) MAX
6 LB. (27 N) MIN
- INSTALLATION TOOLS:
 - UL LISTED AND CSA CERTIFIED: CT-500
 - PANDUIT APPROVED: CT-100, CT-160, CT-260, CT-400, CT-460 (DNF14-187 ONLY), CT-550, CT-1550, CT-1551.
- DIMENSIONS IN BRACKETS ARE IN MILLIMETERS OR mm²



LISTED
20H3
E78522



CERTIFIED
LR31212

MAX WIRE
INSUL DIA

A41586_03

| | | | | | | | | |
|-----|------|------|-----|--|---------|------|-----|--|
| 03 | 2/07 | DAW | DAW | ADDED DUAL TAB SIZE INFORMATION | TRO0210 | LCA | TRO | <p>TINLEY PARK, ILLINOIS</p> <p>NYLON INSULATED FEMALE DISCONNECT, FUNNELED WIRE ENTRY (.206 SERIES)</p> |
| 02 | 7/03 | KLFU | SKB | ADD INTERNAL SERRATIONS REMOVED SLOTS | 12453 | SKB | TRO | |
| 01 | 1/01 | RM | SKB | FILESPEC WAS N41586AA_PCD_00 | 08933 | JAC | CCH | |
| 00 | 1/96 | ED | | RELEASED | 03871 | | | |
| REV | DATE | BY | CHK | DESCRIPTION | ECN # | CUST | PM | DRAWN BY: EJD CHK'D: SCALE: NONE DRAWING NO.: A41586 |