



CABLE 196 RF: RF CABLE ASSEMBLY, MMCX R/A PLUG + SMA STRAIGHT BULKHEAD JACK WITH O-RING RATED TO IP67/68 + MULTIPLE CABLE SIZES

SPECIFICATIONS :

1. MMCX RIGHT ANGLE PLUG, P/N:
FOR RG178, ϕ 1.37MM CABLES: RFCT-MMCX003-M78.
FOR ϕ 1.13MM LL, ϕ 1.13MM CABLES: RFCT-MMCX002-M13.
FOR RG316 CABLE: RFCT-MMCX004-M74.
2. COAXIAL CABLE, SEE P/N FOR DETAIL.
3. SMA STRAIGHT BULKHEAD JACK WITH O-RING RATED TO IP67/68, P/N: FOR ϕ 1.13-RG178CABLE: RFCT-SMA002-F78. FOR RG316 CABLE: RFCT-SMA002-F74.

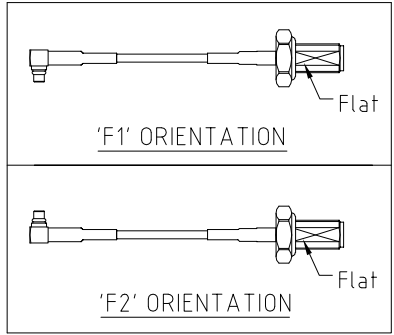
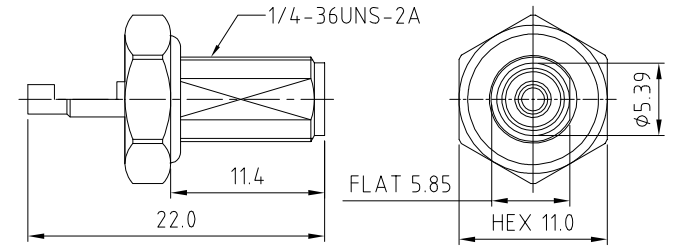
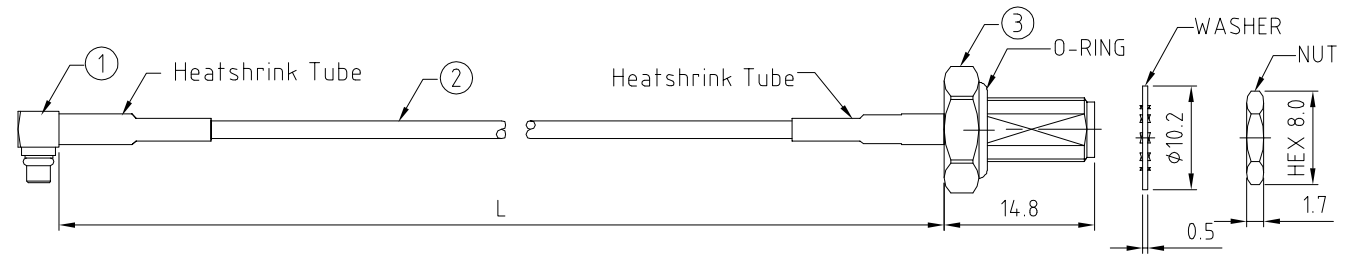
USAGE PRECAUTIONS: CABLES USING 'MICRO' COAX ARE DELICATE:
 (i) HANDLE WITH CARE.
 (ii) DO NOT TWIST; APPLY EXCESSIVE FORCES OR SHARP BENDS TO THE CABLE. DO NOT FORCEFULLY DEFORM WIRES.
 (iii) CONSULT CONNECTOR MANUFACTURER'S DATASHEETS FOR DETAILED NOTES ON HANDLING INSTRUCTIONS.

ENVIRONMENTAL:

- A. BULKHEAD MOUNTED CONNECTOR (RFCT-SMA002-Fxx) TESTED TO THE FOLLOWING SPECIFICATION:
- i. IP6X - DUST TIGHT - NO PARTICLE INGRESS.
 - ii. IPX7 WATERPROOF FOR 30 MINUTES UP TO 1 METER UNDERWATER.
 - iii. IPX8 WATERPROOF FOR 48 HOURS AT 1 METER UNDERWATER.
 - iv. IPX8 WATERPROOF FOR 12 HOURS AT 5 METERS UNDERWATER.
 - v. PRESSURE TEST - 1 BAR FOR 10 SECONDS.

NOTES:

1. THE ORIENTATION OF CONNECTORS ON DRAWING IS FOR REFERENCE ONLY, IF THE ORDER IS LEFT BLANK THE CONNECTOR WILL NOT HAVE FIXED ORIENTATION.
2. FIXED ORIENTATION IS SUGGESTED FOR CABLE LENGTH 50MM TO 100MM. PLEASE SPECIFY THE FIXED ORIENTATIONS FROM THE ORDER CODE (F1, F2, ETC)
3. CONTACT GRAD CONN IF THE ORIENTATION YOU REQUIRE IS NOT SHOWN.
4. WORKING FREQUENCY RANGE: DC-3GHz.
5. OPERATING TEMPERATURE: -40°C~+125°C.



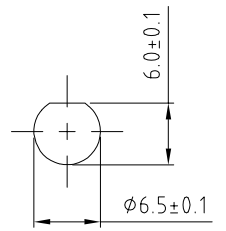
HOW TO ORDER
 CABLE 196 RF - X X X X - X X - X - X

"L" LENGTH IN MM:
 eg: 100MM = 0100
 (MIN. 0050-MAX 2000)
 STANDARD = 0100, 0150, 0200)
 Tolerance: <50mm: \pm 2mm.
 51-200mm: \pm 5mm.
 201-500mm: \pm 7mm.
 >501mm: \pm 10mm.

CABLE SIZE OPTIONS:
 1 = RG178 CABLE, COLOR: BROWN.
 2 = ϕ 1.13MM LOW LOSS CABLE, COLOR: GRAY.
 3 = ϕ 1.37MM CABLE, COLOR: BLACK.
 4 = ϕ 1.13MM CABLE, COLOR: GRAY.
 5 = RG316 CABLE, COLOR: BROWN.

WASHER AND NUT OPTIONS:
 BLANK = SEPARATELY PACKED (STANDARD)
 A = ALL ASSEMBLED WITH CONNECTOR

ORIENTATION OPTIONS:
 BLANK = DOES NOT HAVE A FIXED ORIENTATION
 F1 = MMCX CONNECTION DOWN (L=50-200MM)
 F2 = MMCX CONNECTION UP (L=50-200MM)
 (SEE NOTES 1, 2, 3 AND DIAGRAMS FOR MORE INFORMATION)



10	19/07/15 - NYW RELEASE
11	23/07/15 - NYW UPDATE SMA PART NUMBER
12	29/10/15 - NYW ADD IP67/68 RATING INFO
13	ADD 11.13MM CABLE OPTION
14	02/04/18 - NYW UPDATE MMCX P/N FOR RG178 CABLE
15	27/05/18 - NYW ADD CABLE SIZE 3 OPTION
16	ADD CABLE SIZE 4 OPTION
17	24/05/19 - NYW ADD OPERATING TEMP..
18	24/07/22 - NYW ADD CABLE OPTION 5.

Scale:	NTS	THIRD ANGLE	Unstated Tolerances:
Drawn:	NYW		.X N/A .XX N/A .XXX N/A ANGLES N/A
App'd:	XXX	Title	CABLE ASSEMBLY
Date:	24 JAN. '22	Revision:	1.8
		Unit:	mm

IP67/68 Rated Cables www.gradconn.com

Type:	Cable 196 RF
	CABLE 196 RF
Drawing Number:	Sheet 1 of 1
Drawing	E and O E