

Voltage selector switch with fuseholder, 6 stages, serie-parallel, panel mounting



Description

- Voltage Selector, with fuseholder, 6 stages
- Series-parallel connections
- For 5 x 20 mm fuse-links
- Solder terminals or quick connect terminals 2.8 x 0.5 mm

Standards

- IEC 61058-2-5
- UL 508
- CSA C22.2 no. 55

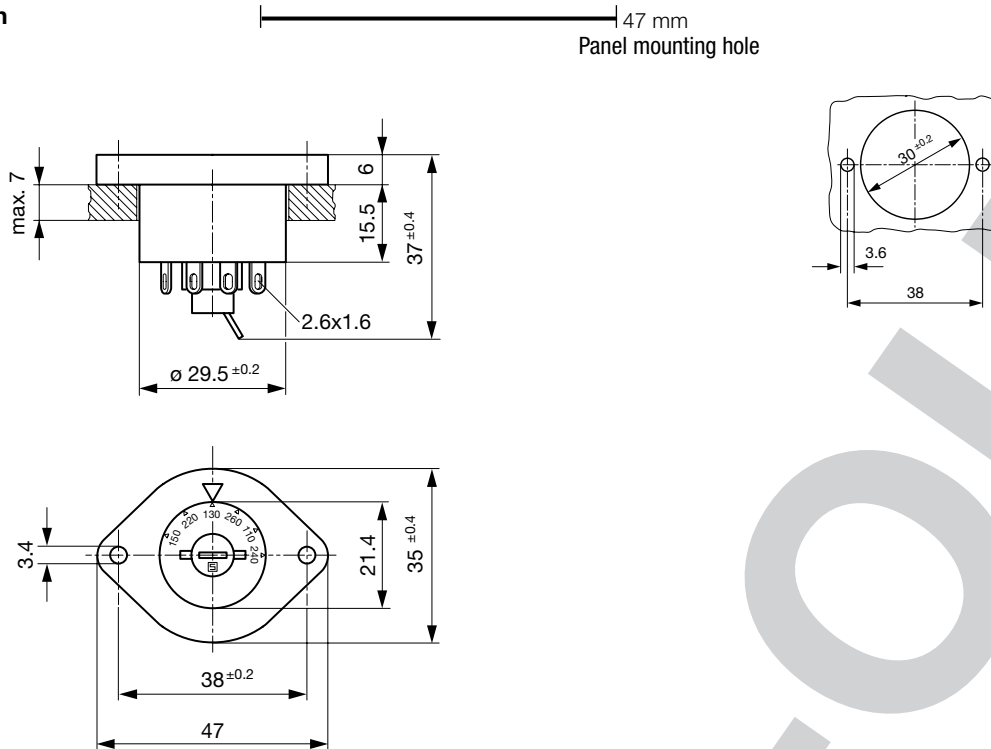
References

We recommend for new applications the type [SWZ1 \(Frontpl\)](#)
Last order date: 31.12.2016

Technical Data

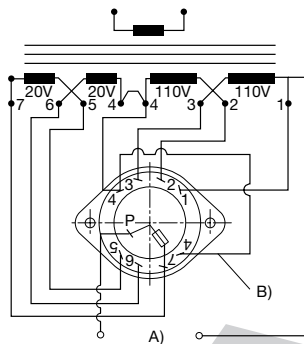
Ratings	IEC: 6.3 A / 250 VAC; 50 Hz	Solderability	350 °C / 2 sec acc. to IEC 60068-2-20, Test Ta, method 2	
	UL: 10 A / 250 VAC; 60 Hz		Resistance to Soldering Heat	350 °C / 5 sec acc. to IEC 60068-2-20, Test Tb, method 1B
	CSA: 6.3 A / 250 VAC; 60 Hz			Insulation Resistance
Mounting	Panel Mount from front side	Contact Resistance	< 10 mΩ at 20 mV	
Fastening	Screw-on mounting	Dielectric Strength	> 2kVAC between L-N > 4kVAC between L/N-PE (1min; 50Hz)	
Terminal	Solder or Quick-Connect	Clearance and Creepage Distance	> 3mm > 8mm between L/N-PE	
Number of Stages	6	Resistance to Vibration	acc. to IEC 60068-2-6, test Fc	
Lifetime	300 operating cycles (without load)			
Shock-Safe Category	PC2			
Protection Class	Suitable for appliances with protection class II acc. to IEC 61140			
Allowable Operation Temp.	-40 °C to 70 °C			
Climatic Category	25/85/21 acc. to IEC 60068-1			
Material: Socket	Thermoplastic, black, UL 94V-0			
Weight	23.2 g			

Dimension



Diagrams

Reverse view



A) Power mains
B) External connection

All Variants

Stage 1	Stage 2	Stage 3	Letterings			Terminal	Order Number
			Stage 4	Stage 5	Stage 6		
150	220	130	260	110	240	Solder terminals	0033.6001
						Solder terminals	0033.6014
150	220	130	260	110	240	Quick connect terminals 2.8 x 0.5 mm	0033.6101
						Quick connect terminals 2.8 x 0.5 mm	0033.6114

Availability for all products can be searched real-time: <http://www.schurter.com/Stock-Check/Stock-Check-SCHURTER>

Packaging Unit 50 Pcs