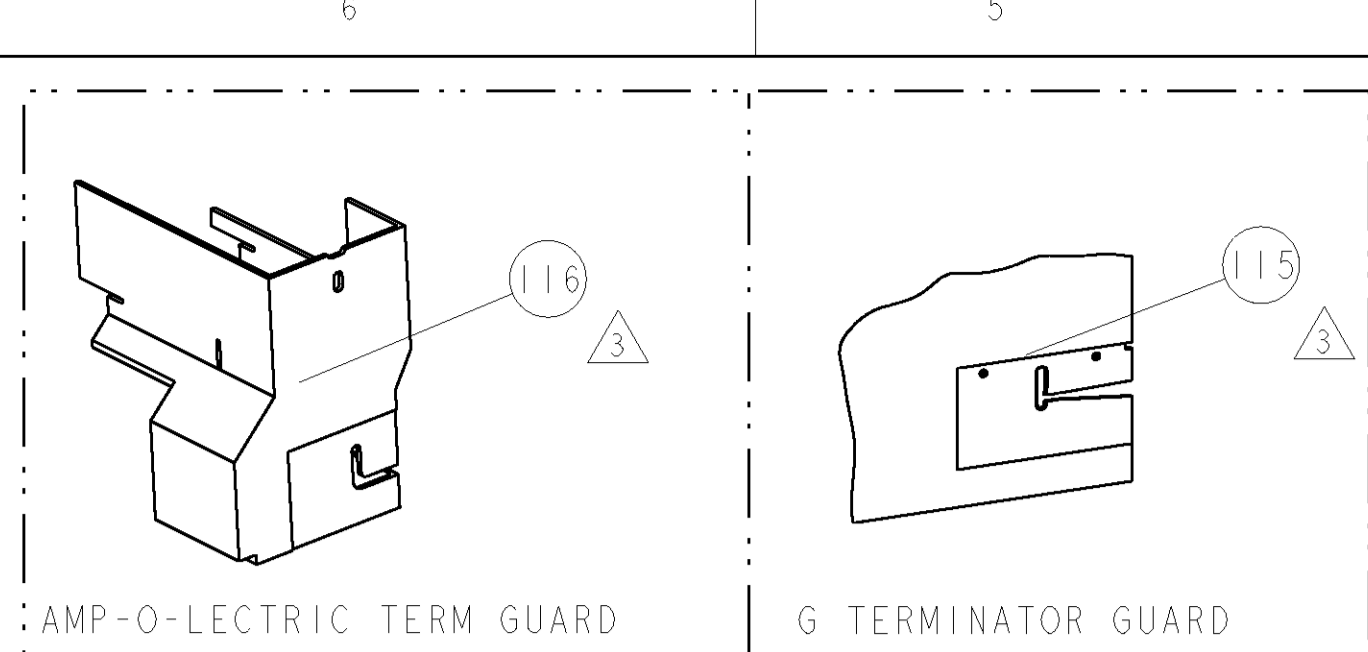


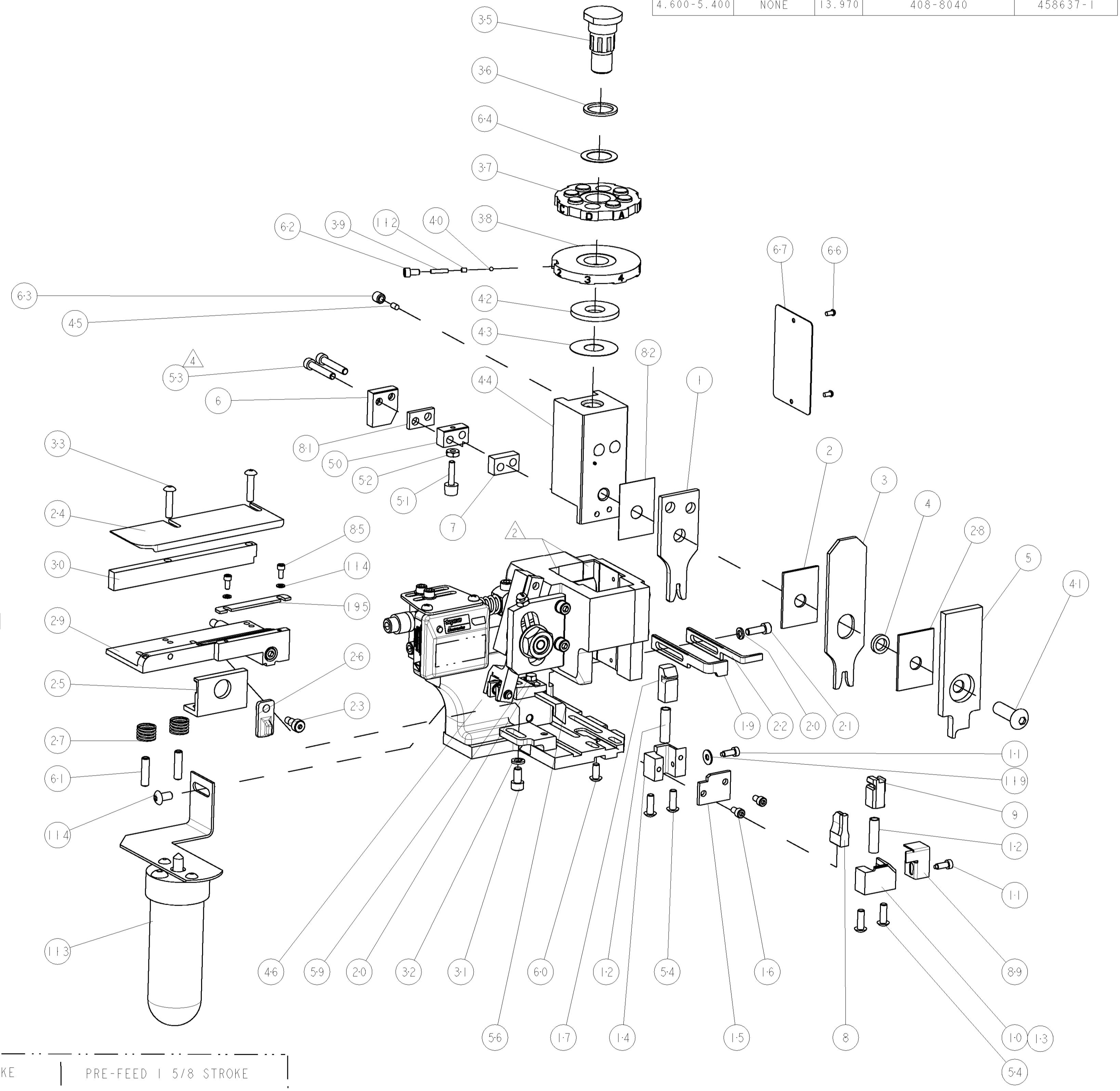
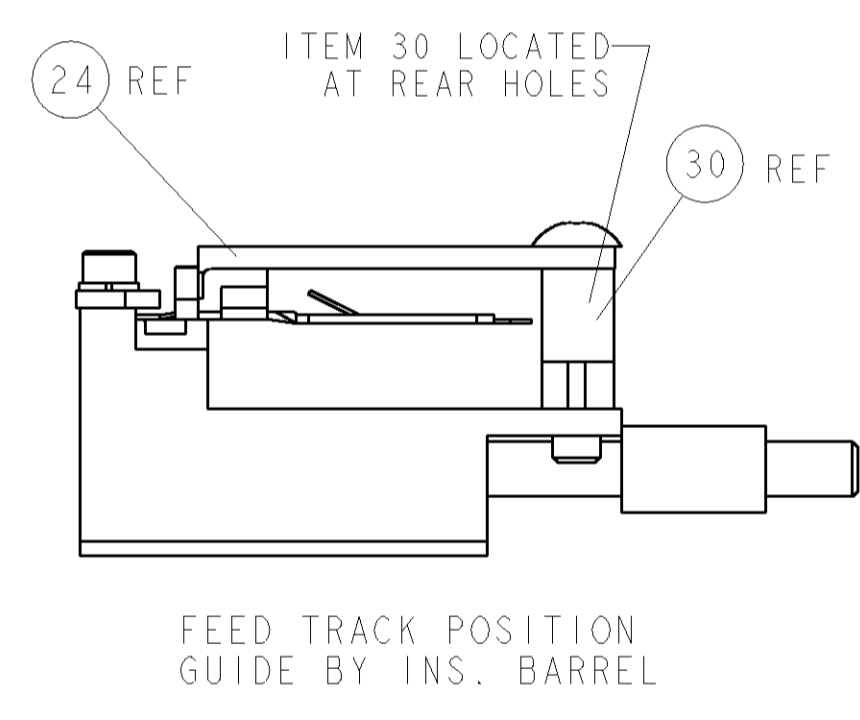
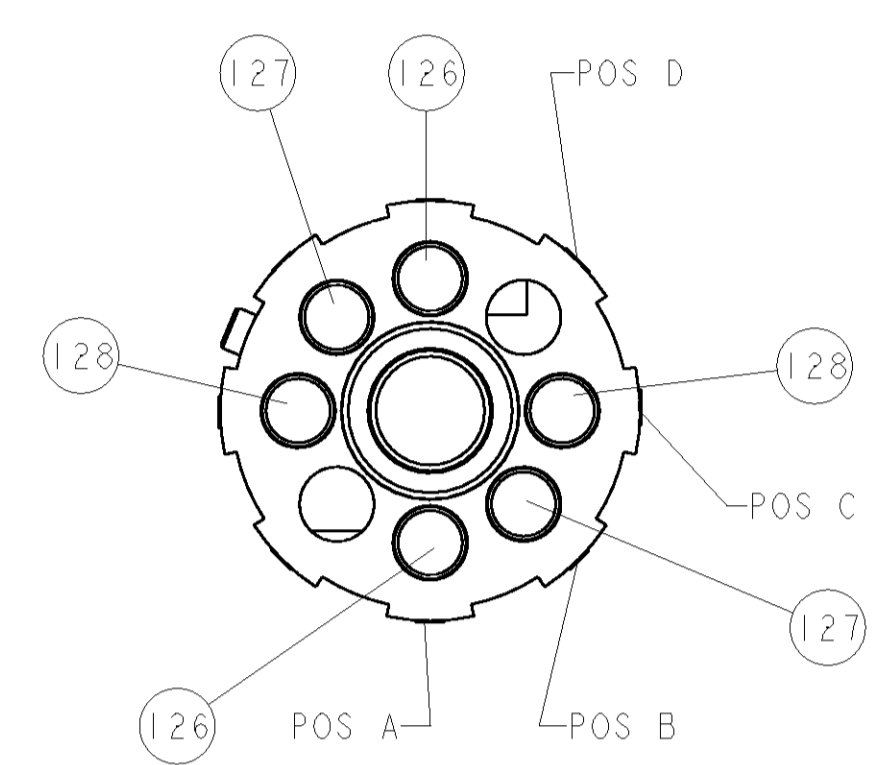
PART NUMBER	REV	FIRST USED	POWER UNIT	FEED TYPE	DESCRIPTION
1852667-1	A	122500-1	LEADMAKER	POST FEED	CUTS CARRIER
1852667-2	A	565435-5	BENCH MODEL K	PRE FEED	CUTS CARRIER
1852667-3	A	354500-1	BENCH MODEL G	PRE FEED	CUTS CARRIER
1852667-6	A	122500-1	LEADMAKER	POST FEED	CONTINUOUS CARRIER
7-1852667-7	A	-	-	-	SPARE PARTS



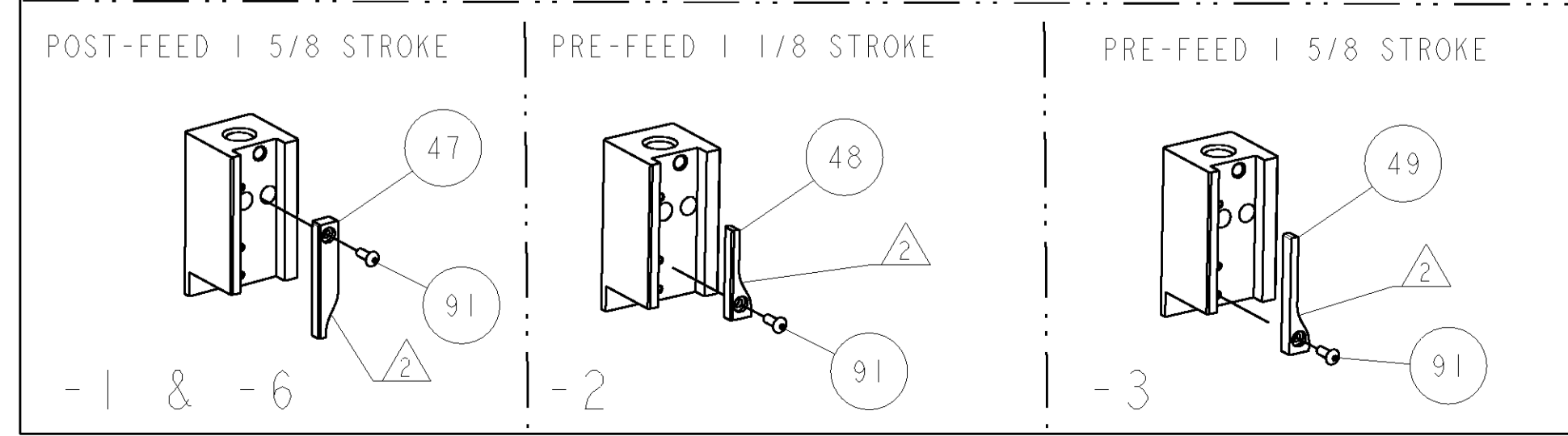
TERMINAL NAME: 6.3mm TAB CONTACT			
TE P/N	GHW/LEAR P/N	GHW/LEAR TERMINAL - TE CRIMP SPECS	
1949657-1	25297.123.178	PAD LTR	CRIMP HEIGHT
-	-	A	1.48mm+0.05/-0.05 [.058+/.002/- .002]
-	-	B	1.41mm+0.05/-0.05 [.056+/.002/- .002]
-	-	C	1.30mm+0.05/-0.05 [.051+/.002/- .002]
-	-	D	-
-	-	WIRE	2.29mm [.090] F
-	-	INSUL	3.94mm [.155] F
WIRE STRIP LENGTH	TERM APPL SPEC	FEED	APPLICATOR INSTRUCTIONS
4.600-5.400	NONE	13.970	408-8040
-	-	-	SET UP GAGE
-	-	-	458637-1

LOC	DIST	REV	DESCRIPTION	DATE	DRW	APPR
A	66		RELEASED	07MAY2008	RK	GB

- ⚠ RECOMMENDED SPARE PARTS
- ⚠ GREASE LIGHTLY
- ⚠ GUARD MUST BE IN PLACE WHEN OPERATING APPLICATOR IN A BENCH MACHINE
- ⚠ CUT TO LENGTH AT ASSEMBLY.



QTY	REF	DESCRIPTION	ITEM NO
1	115	INSERT, GUARD	115
1	114	WASHER, SPRG LOCK, REG NO 4	114
1	114	SCR, BTN SKT HD CAP 10-32 X .375	114
1	113	LUBRICATOR ASSY	113
1	112	SPRING ASSIST AMP-O-MATOR APPLICATOR	112
1	91	SCR, BTN SKT HD CAP 6-32 X .375	91
1	89	GUARD, FRONT CHIP	89
1	85	SCR, SKT HD CAP 4-40 X .250	85
1	82	SPACER, CRIMPER	82
1	81	SPACER	81
1	72	SF APPL INST 408-8040	72
1	71	GENERAL INSTRUCTION PKG	71
1	67	PLATE, IDENTIFICATION	67
2	66	SCREW, DRIVE	66
1	64	WASHER, FLAT PRECISION	64
1	63	SCR, SET, SELF LOCKING 1/4-20 X .250	63
1	62	SCR, SKT HD CAP 6-32 X .25	62
2	61	SCR, SET, CUP POINT 10-32 X .750	61
1	60	SCR, BHSC, SELF-LOCKING, 8-32 X .375	60
1	59	SCR, HEX HD CAP 8-32 X .312	59
1	56	FEED PAWL	56
4	54	SCR, BTN SKT HD CAP 8-32 X .500	54
2	53	SCR, SKT HD CAP 8-32 X 1.000	53
1	52	NUT, HEX, REG 6-32	52
1	51	BUMPER, HOLD DOWN	51
1	50	SPACER, TONKER	50
1	49	CAM, PRE FEED, 1 5/8	49
1	48	CAM, PRE FEED, 1 1/8	48
1	47	CAM, POST FEED, 1 5/8	47
1	46	APPL. BASIC SUB ASSY (SIDE WISE MOCA)	46
1	45	PLUG, NYLON	45
1	44	RAM, SIDE FEED	44
1	43	SHIM SUB-ASSY	43
1	42	WASHER, RAM (.115)	42
1	41	SCR, BTN SKT HD CAP 5/16-24 X 1.00	41
1	40	BALL, STEEL	40
1	39	SPRING, COMPRESSION	39
1	38	DISC, INSULATION	38
1	37	WIRE DISC, ASSEMBLY	37
1	36	SPRING, COMPRESSION	36
1	35	POST, RAM	35
2	33	SCR, BTN SKT HD CAP 8-32 X .750	33
1	32	WASHER, SPRG LOCK, REG NO 10	32
1	31	SCR, SKT HD CAP 10-32 X .375	31
1	30	SPACER, STRIP GUIDE	30
1	29	ASSEMBLY, STRIP GUIDE	29
1	28	SPACER, CRIMPER	28
2	27	SPRING, COMPRESSION	27
1	26	LEVER, DRAG RELEASE	26
1	25	DRAG, TERMINAL	25
1	24	PLATE, STRIP GUIDE	24
1	23	SCR, SKT HD SHLDR 3/16 DIA X .250	23
1	22	STRIPPER	22
1	21	SCR, SKT HD CAP 8-32 X .500	21
2	20	WASHER, SPRG LOCK, REG NO 8	20
1	19	STRIPPER	19
1	17	FLOATING SHEAR, REAR	17
2	16	SCR, SKT HD CAP 6-32 X .250	16
1	15	SHEAR PLATE, REAR	15
1	14	SHEAR HOLDER, REAR	14
1	13	SHEAR HOLDER, FRONT (NO CUT)	13
2	12	SPRING, COMPRESSION	12
2	11	STOP, SHEAR	11
1	10	SHEAR HOLDER, FRONT	10
1	9	FLOATING SHEAR, FRONT	9
1	8	ANVIL, COMBINATION	8
1	7	SPACER	7
1	6	DEPRESSOR SHEAR, REAR	6
1	5	DEPRESSOR, SHEAR	5
1	4	BLOCK, CRIMPER SPACER	4
1	3	CRIMPER, INSULATION F	3
1	2	SPACER, CRIMPER	2
1	1	CRIMPER, WIRE PREMIUM	1



QTY	REF	DESCRIPTION	ITEM NO					
1	195	FRONT STRIP GUIDE	195					
2	128	PIN, WIRE DISC, .3115	128					
2	127	PIN, WIRE DISC, .3065	127					
2	126	PIN, WIRE DISC, .3035	126					
1	119	WASHER, FLAT, REG NO 6	119					
1	116	GUARD WINDOW	116					
-77	-6	-3	-2	-1	U/M	PART NO	DESCRIPTION	ITEM NO

DIMENSIONS: INCHES 	TOLERANCES UNLESS OTHERWISE SPECIFIED: 9 PLC ±.01 8 PLC ±.01 5 PLC ±.001 4 PLC ±.0001 ANGLES ±.01	DWN: R. KNEPPER 03APR2008 CHK: G. BAILEY 07MAY2008 APVD: N. DEMING 03APR2008 PRODUCT SPEC: SIDE FEED HDM APPLICATOR APPLICATION SPEC: - WEIGHT: - CUSTOMER DRAWING: A1100779 ©=1852667	Tyco Electronics Harrisburg, PA 17105-3608 SCALE: 3:5 SHEET 1 OF 1 REV A
---------------------------	--	--	--

CUSTOMER VIEWABLE ASSEMBLY