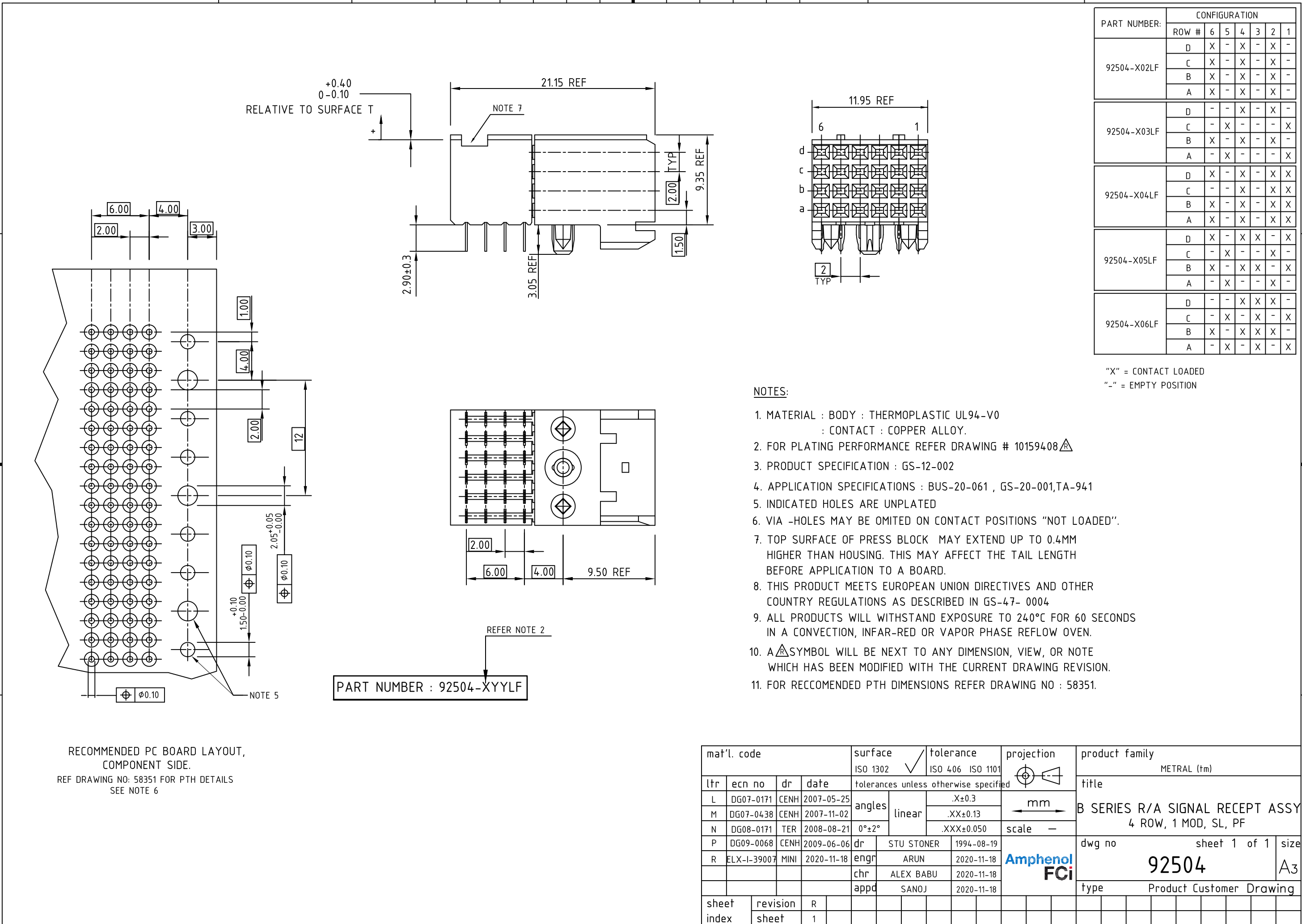




Amphenol
FCi

© 2016 AFCl



| PART NUMBER: | CONFIGURATION | | | | | | |
|--------------|---------------|---|---|---|---|---|---|
| | ROW # | 6 | 5 | 4 | 3 | 2 | 1 |
| 92504-X02LF | D | X | - | X | - | X | - |
| | C | X | - | X | - | X | - |
| | B | X | - | X | - | X | - |
| | A | X | - | X | - | X | - |
| 92504-X03LF | D | - | - | X | - | X | - |
| | C | - | X | - | - | - | X |
| | B | X | - | X | - | X | - |
| 92504-X04LF | D | X | - | X | - | X | X |
| | C | - | - | X | - | X | X |
| | B | X | - | X | - | X | X |
| | A | X | - | X | - | X | X |
| 92504-X05LF | D | X | - | X | X | - | X |
| | C | - | X | - | - | X | - |
| | B | X | - | X | X | - | X |
| 92504-X06LF | D | - | - | X | X | X | - |
| | C | - | X | - | X | - | X |
| | B | X | - | X | X | X | - |
| | A | - | X | - | X | - | X |

"X" = CONTACT LOADED
 "-" = EMPTY POSITION

NOTES:

- MATERIAL : BODY : THERMOPLASTIC UL94-V0
 : CONTACT : COPPER ALLOY.
- FOR PLATING PERFORMANCE REFER DRAWING # 10159408
- PRODUCT SPECIFICATION : GS-12-002
- APPLICATION SPECIFICATIONS : BUS-20-061 , GS-20-001,TA-941
- INDICATED HOLES ARE UNPLATED
- VIA -HOLES MAY BE OMITED ON CONTACT POSITIONS "NOT LOADED".
- TOP SURFACE OF PRESS BLOCK MAY EXTEND UP TO 0.4MM HIGHER THAN HOUSING. THIS MAY AFFECT THE TAIL LENGTH BEFORE APPLICATION TO A BOARD.
- THIS PRODUCT MEETS EUROPEAN UNION DIRECTIVES AND OTHER COUNTRY REGULATIONS AS DESCRIBED IN GS-47- 0004
- ALL PRODUCTS WILL WITHSTAND EXPOSURE TO 240°C FOR 60 SECONDS IN A CONVECTION, INFAR-RED OR VAPOR PHASE REFLOW OVEN.
- A SYMBOL WILL BE NEXT TO ANY DIMENSION, VIEW, OR NOTE WHICH HAS BEEN MODIFIED WITH THE CURRENT DRAWING REVISION.
- FOR RECCOMENDED PTH DIMENSIONS REFER DRAWING NO : 58351.

RECOMMENDED PC BOARD LAYOUT,
 COMPONENT SIDE.
 REF DRAWING NO: 58351 FOR PTH DETAILS
 SEE NOTE 6

PART NUMBER : 92504-XYLFF

| | | | | | | | | | | | |
|-------------|--|--|--|-----------------------|--|-------------------------------|--|----------------|--|---|--|
| mat'l. code | | | | surface ISO 1302 ✓ | | tolerance ISO 406 ISO 1101 | | projection | | product family METRAL (tm) | |
| ltr | | | | ecn no | | dr | | date | | title | |
| L | | | | DG07-0171 | | CENH | | 2007-05-25 | | B SERIES R/A SIGNAL RECEPT ASSY 4 ROW, 1 MOD, SL, PF | |
| M | | | | DG07-0438 | | CENH | | 2007-11-02 | | | |
| N | | | | DG08-0171 | | TER | | 2008-08-21 | | | |
| P | | | | DG09-0068 | | CENH | | 2009-06-06 | | | |
| R | | | | ELX-I-39007 | | MINI | | 2020-11-18 | | dwg no 92504 | |
| sheet index | | | | revision | | R | | 1 | | sheet 1 of 1 | |
| type | | | | Product | | Customer | | Drawing | | size A3 | |