

Hexagonal locknut

2xx PANPT/G

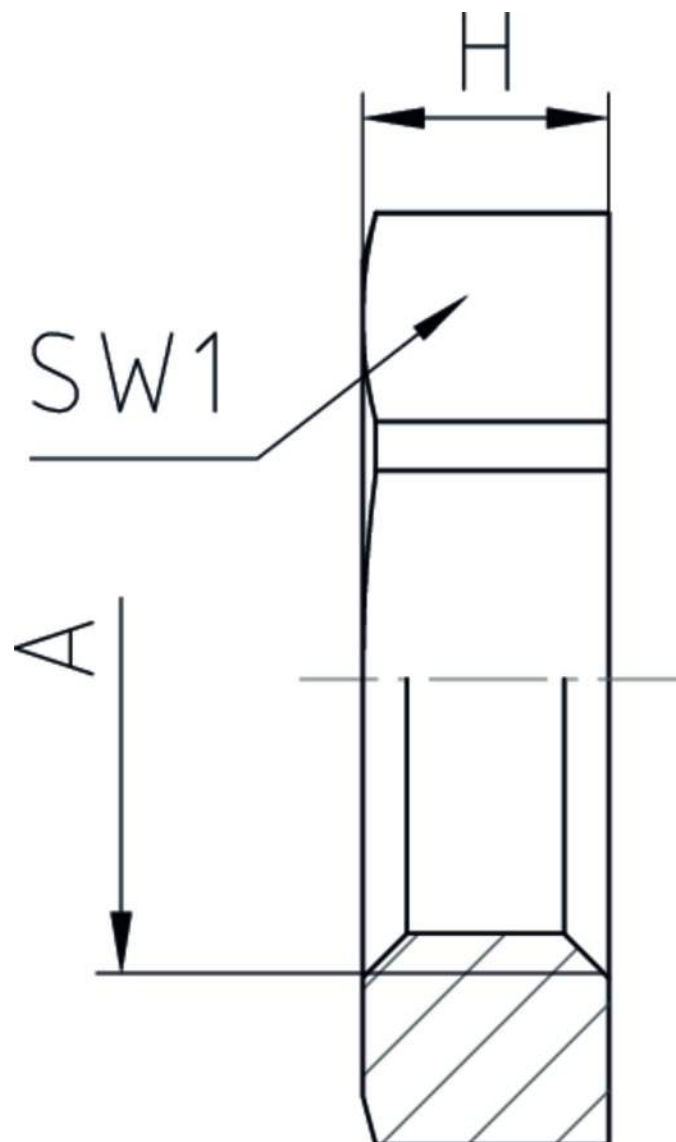
Hexagonal locknut Polyamide PA6 GF30

Internal thread NPT

Properties

Temperature range


- for secure tightening of cable glands and accessories
- 40 °C
+100 °C



Features




RAL 9005

A	SW1	H	 VPE	Part No.
NPT 3/8"	22	5	100	238 PANPTSW/G
NPT 1/2"	27	6	100	212 PANPTSW/G
NPT 3/4"	36	7	100	234 PANPTSW/G
NPT 1"	42	7	100	210 PANPTSW/G



RAL 7035

A	SW1	H	 VPE	Part No.
NPT 3/8"	22	5	100	238 PANPT/G
NPT 1/2"	27	6	100	212 PANPT/G
NPT 3/4"	36	7	100	234 PANPT/G
NPT 1"	42	7	100	210 PANPT/G