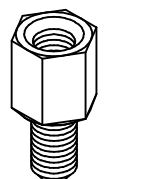
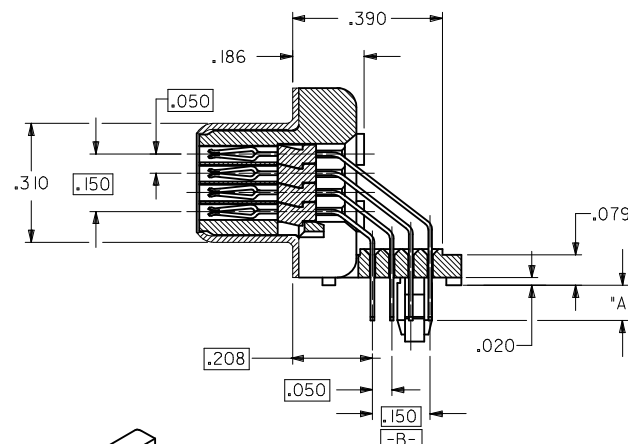
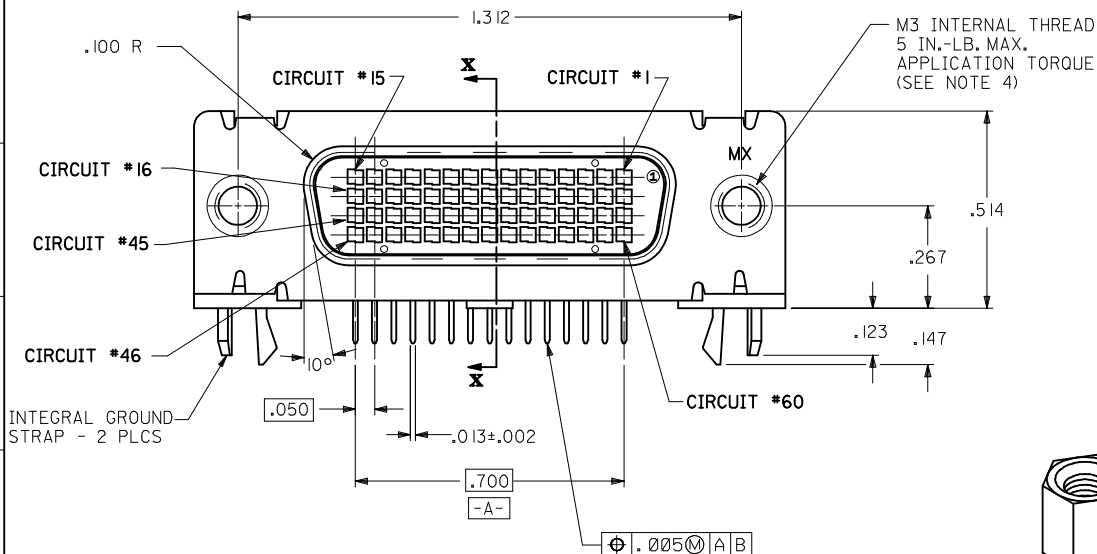
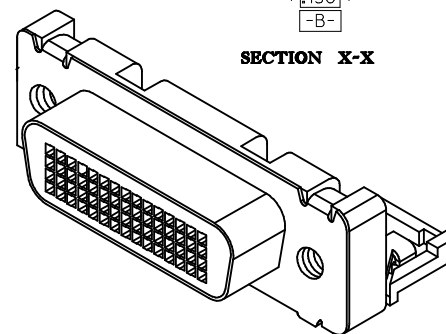


ITEM NUMBER	DIMENSION "A"	PLATING (SEE NOTE 2)	HEXAGONAL SCREWLOCKS PACKAGED WITH CONNECTORS	SCREWLOCK ITEM NUMBER (SEE SD-70982-****)	PACKAGING PER PACKAGING SPECIFICATION
70928-2000	.079±.010	30 GOLD	NO	_____	PK-70873-0291
70928-2001	.092±.010	30 GOLD	NO	_____	PK-70873-0291
70928-2002	.104±.010	30 GOLD	NO	_____	PK-70873-0291
70928-2003	.079±.010	30 GOLD	YES	70982-1003; 4-40 INTERNAL THD	PK-70873-0686
70928-2005	.079±.010	30 GOLD	YES	70982-1004; M-3 INTERNAL THD	PK-70873-0686
70928-2007	.125±.010	30 GOLD	NO	_____	PK-70873-0291
70928-2008	.092±.010	30 GOLD	YES	70982-1003; 4-40 INTERNAL THD	PK-70873-0686
70928-2009	.092±.010	GOLD FLASH	NO	_____	PK-70873-0291
70928-2010	.092±.010	GOLD FLASH	YES	70982-1003; 4-40 INTERNAL THD	PK-70873-0686



OPTIONAL HEXAGONAL SCREWLOCK

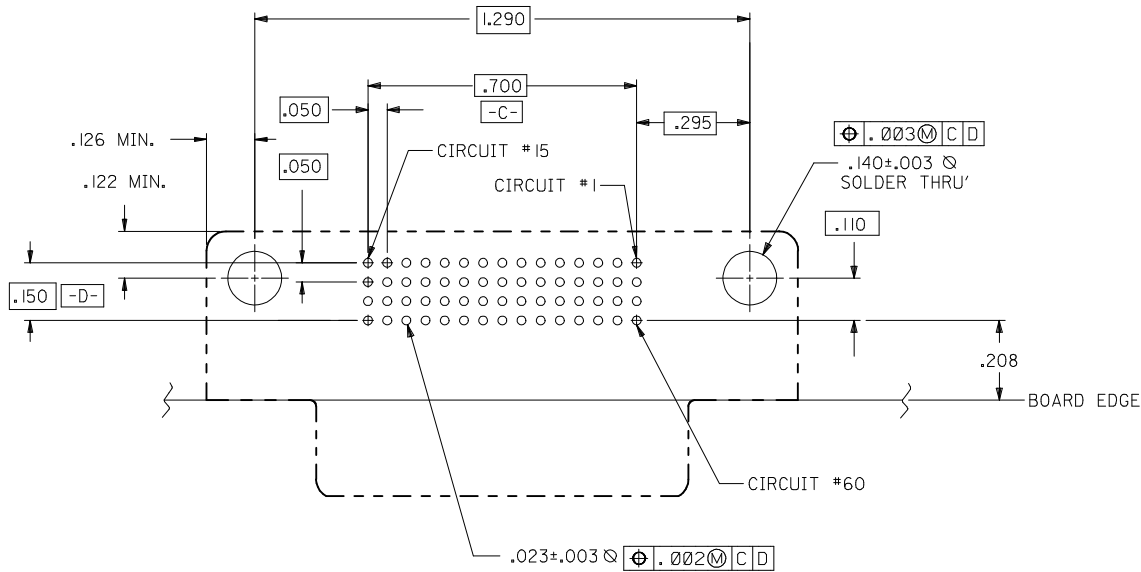


SECTION X-X

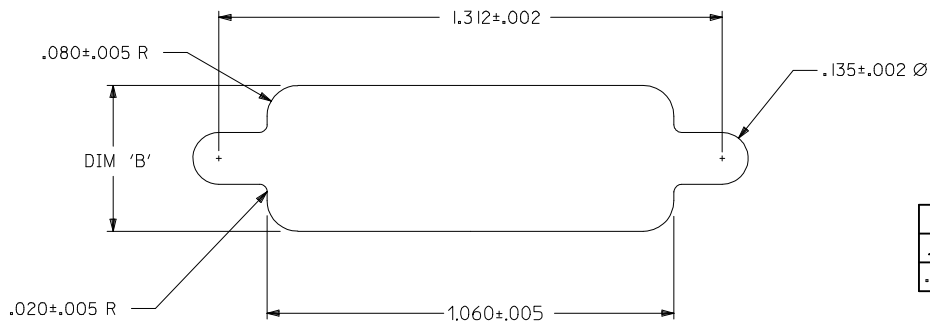
NOTES:

- MATERIALS:  
HOUSING AND MOLDED STICK: GLASS FILLED POLYMER, 94V-0, COLOR BLACK.  
TERMINALS: COPPER ALLOY .010±.0005 THICK.  
OUTER SHELL: DEEP DRAWN STEEL, .016(0.40) THICK.  
HEXAGONAL SCREWLOCK: STEEL.
- PLATING:  
TERMINALS (SEE CHART TO DETERMINE WHICH PART NUMBER HAS WHICH PLATING):  
30 GOLD -- 30 MICRONS(0.76 MICROMETERS) MINIMUM SELECTIVE GOLD (Au) IN THE CONTACT AREA;  
100 MICRONS(2.54 MICROMETERS) MINIMUM SELECTIVE TIN (Sn) IN PC TAIL AREA;  
OVER NICKEL (Ni) UNDERPLATE OVERALL.  
GOLD FLASH -- SELECTIVE GOLD (Au) FLASH IN THE CONTACT AREA;  
100 MICRONS(2.54 MICROMETERS) MINIMUM SELECTIVE TIN (Sn) IN PC TAIL AREA;  
OVER NICKEL (Ni) UNDERPLATE OVERALL.  
OUTERSHELL: 150 MICRONS(3.81 MICROMETERS) MINIMUM TIN (Sn) OVER 50 MICRONS(1.27 MICROMETERS) MINIMUM NICKEL (Ni) OVERALL.
- CONFORMS TO PRODUCT SPECIFICATION PS-70928.
- THREAD GAGE MAY REQUIRE UP TO 1 IN.-LB. OF TORQUE DURING GAGING PROCESS.
- PART COMPLIES WITH CLASS B OF COSMETIC SPECIFICATION PS-45499-002

<b>MOD PANEL CUT-OUT</b> EC NO: UCP2012-0335 DRWING:MORGAN 2011/08/12 CHKD:MPFF 2014/04/11 APPR:SMILLER 2014/05/12	QUALITY SYMBOLS 	GENERAL TOLERANCES (UNLESS SPECIFIED)		DIMENSION STYLE INCH ONLY		SCALE 4:1	DESIGN UNITS INCH	THIRD ANGLE PROJECTION	
		mm	INCH	DRAWN BY MOS	DATE 1993/02/08	.050" PITCH LFH 60 CKT RIGHT ANGLE I/O RECEPTACLE <b>molex</b>			
		4 PLACES ± .010	± .010	CHECKED BY CAB	DATE 1993/02/08				
		3 PLACES ± .015	± .015	APPROVED BY CAB	DATE 1993/02/08	MATERIAL NO. SEE TABLE	DOCUMENT NO. SDA-70928-20**	SHEET NO. 1 OF 2	
2 PLACES ± 0.25	± .015	DRAFT WHERE APPLICABLE MUST REMAIN WITHIN DIMENSIONS		THIS DRAWING CONTAINS INFORMATION THAT IS PROPRIETARY TO MOLEX. INCORPORATED AND SHOULD NOT BE USED WITHOUT WRITTEN PERMISSION					



COMPONENT SIDE  
RECOMMENDED P.C.B. LAYOUT



RECOMMENDED PANEL CUT-OUT

DIM. 'B'	PANEL THICKNESS
.400±.005	.039
.420±.005	.064

<b>SEE SHEET 1</b> EC NO: UCP2012-0335 DRW:DMORGAN 2011/08/12 CHKD:MPOFF 2014/04/11 APPR:SMILLER 2014/05/12	QUALITY SYMBOLS 	GENERAL TOLERANCES (UNLESS SPECIFIED) <table border="1"> <thead> <tr> <th></th> <th>mm</th> <th>INCH</th> </tr> </thead> <tbody> <tr> <td>4 PLACES</td> <td>± .005</td> <td>± .0005</td> </tr> <tr> <td>3 PLACES</td> <td>± .004</td> <td>± .0004</td> </tr> <tr> <td>2 PLACES</td> <td>± 0.25</td> <td>± .015</td> </tr> <tr> <td>1 PLACE</td> <td>± 0.38</td> <td>± .015</td> </tr> <tr> <td>0 PLACE</td> <td>± .005</td> <td>± .0005</td> </tr> </tbody> </table>		mm	INCH	4 PLACES	± .005	± .0005	3 PLACES	± .004	± .0004	2 PLACES	± 0.25	± .015	1 PLACE	± 0.38	± .015	0 PLACE	± .005	± .0005	DIMENSION STYLE <b>INCH ONLY</b> DRAWN BY: MOS DATE: 1993/02/08 CHECKED BY: CAB DATE: 1993/02/08 APPROVED BY: CAB DATE: 1993/02/08	SCALE: 4:1 DESIGN UNITS: INCH THIRD ANGLE PROJECTION	TITLE: <b>.050" PITCH LFH 60 CKT          RIGHT ANGLE I/O          RECEPTACLE</b> 
		mm	INCH																				
	4 PLACES	± .005	± .0005																				
	3 PLACES	± .004	± .0004																				
2 PLACES	± 0.25	± .015																					
1 PLACE	± 0.38	± .015																					
0 PLACE	± .005	± .0005																					
		ANGULAR ±1/2° DRAFT WHERE APPLICABLE MUST REMAIN WITHIN DIMENSIONS	MATERIAL NO. <b>SEE TABLE</b>	DOCUMENT NO. <b>SDA-70928-20**</b>	SHEET NO. <b>2 OF 2</b>																		
			SIZE:	THIS DRAWING CONTAINS INFORMATION THAT IS PROPRIETARY TO MOLEX INCORPORATED AND SHOULD NOT BE USED WITHOUT WRITTEN PERMISSION																			