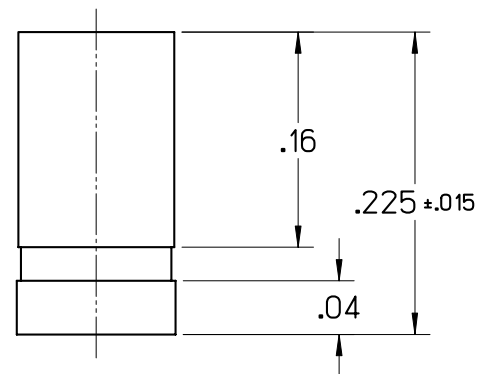
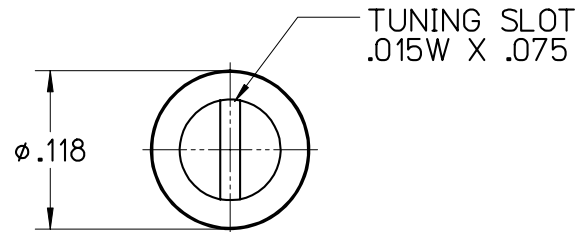


MI DRG. NO.

27280F

REV.

**27280****F****TRIMMER CAPACITOR (GIGA-TRIM<sup>®</sup>)**

## SPECIFICATIONS

FILE: AIROUT

|                                 |                             |
|---------------------------------|-----------------------------|
| CAPACITY RANGE                  | 0.4pF TO 2.5pF (>4 TURNS)   |
| WORKING VOLTAGE                 | 500 VDC (1000 VDC TEST)     |
| Q @250 MHz                      | >4000                       |
| INSULATION RESISTANCE           | >10 <sup>6</sup> MEGOHMS    |
| TEMPERATURE RANGE               | -65°C TO +125°C             |
| TORQUE                          | 0.2 TO 2.0 OZ. IN           |
| ROTATIONAL LIFE                 | 50 CYCLES (400 REVOLUTIONS) |
| VIBRATION                       | 15G @10-2000 Hz             |
| SHOCK                           | 100G @6 ms                  |
| MOISTURE RESISTANCE             | 10-24 HR. CYCLE             |
| BRASS & INVAR STRUCTURE         |                             |
| SAPPHIRE DIELECTRIC             |                             |
| FINISHES: GOLD AND SILVER PLATE |                             |
| ACTUAL SIZE                     |                             |

|       |          |      |      |      |         |
|-------|----------|------|------|------|---------|
| F     | 10/25/06 | MLD  | MAI  | MAI  | 000442  |
| E     | 02/25/00 | -    | -    | -    | 000-077 |
| LEVEL | DATE     | DRN. | CHK. | APP. | ECN     |

## REVISIONS

|          |          |          |             |
|----------|----------|----------|-------------|
| DRN.     | CHK.     | APP.     | SCALE       |
| RMV      | TAM      | JHT      | 7" = 1"     |
| DATE     | DATE     | DATE     | .XX ± .015  |
| 02/25/00 | 03/03/00 | 03/08/00 | .XXX ± .005 |



**JOHANSON MANUFACTURING CORPORATION**  
 ROCKAWAY VALLEY ROAD, BOONTON, N.J. 07005 (973)334-2676 FAX (973)334-2954  
 ELECTRONIC ACCURACY THROUGH MECHANICAL PRECISION

PROPRIETARY INFORMATION CONTAINED NOT TO BE USED WITHOUT JOHANSON MANUFACTURING CORPORATION APPROVAL