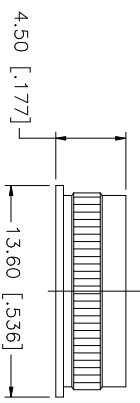
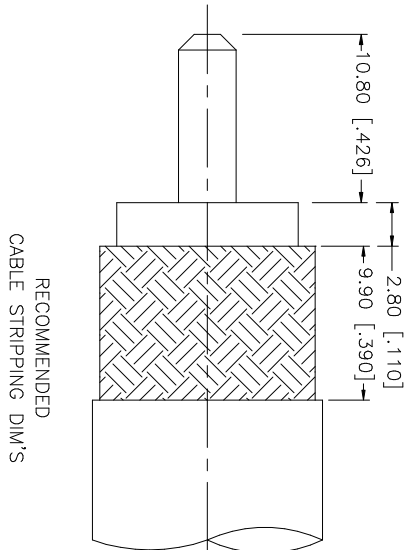
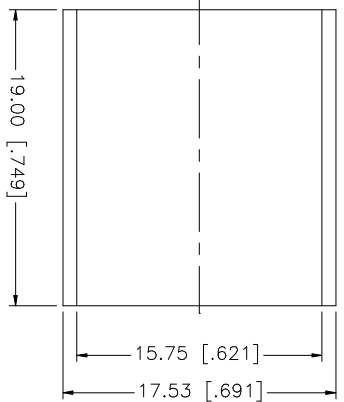
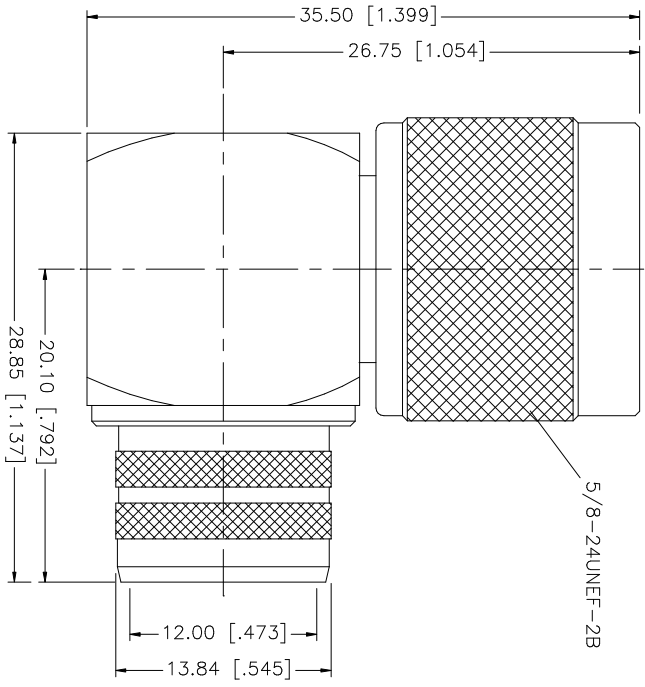


REV.	DATE	DESCRIPTION
NC	05/04/00	INITIAL RELEASE
A	02/11/06	UPDATE DRAWING FORMAT



- NOTE:
1. CRIMPED FERRULE  
HEX. CRIMP SIZE .600"
  2. CONTACT PIN TO SOLDER.

NO.	DESCRIPTION	MATERIAL	FINISH	QTY	UNLESS OTHERWISE SPECIFIED DIMENSIONS ARE IN MILLIMETERS (DIMENSIONS IN [ ] ARE IN INCHES AND FOR CONVENTIONAL TOLERANCE ONLY. TOLERANCES FOR MILLIMETERS ARE:	APPROVALS	DATE	PART DESCRIPTION	DWG. NO.	REV.	SIZE	SCALE	
8					UNLESS OTHERWISE SPECIFIED DIMENSIONS ARE IN MILLIMETERS (DIMENSIONS IN [ ] ARE IN INCHES AND FOR CONVENTIONAL TOLERANCE ONLY. TOLERANCES FOR MILLIMETERS ARE: 0.5 - 8mm ± 0.20mm 8 - 30mm ± 0.40mm 30 - 120mm ± 0.50mm	DRAWN	G.R.S.	02/11/06	Amphenol Connex N R/A DIRECT CRIMP PLUG (FOR LMR-600 CABLE)	1722263.DWG	A	A	NA
7				UNLESS OTHERWISE SPECIFIED DIMENSIONS ARE IN MILLIMETERS (DIMENSIONS IN [ ] ARE IN INCHES AND FOR CONVENTIONAL TOLERANCE ONLY. TOLERANCES FOR MILLIMETERS ARE: .020 - .315 = ± 0.007" .315 - 1.180 = ± 0.015" 1.180 - 4.724 = ± 0.020"		CHECKED							
6	FERRULE	COPPER	NEXCOTE			1	ISSUED						
5	COVER	BRASS	NEXCOTE	1		SHEET	1 OF 1						
4	CONTACT PIN	BRASS	GOLD	1									
3	INSULATOR	TEFLON	NATURAL	1									
2	BODY	BRASS	NEXCOTE	1									
1	DESCRIPTION	MATERIAL	FINISH	QTY	DO NOT SCALE DRAWING	CAD FILE	C:/172/1722263.DWG						