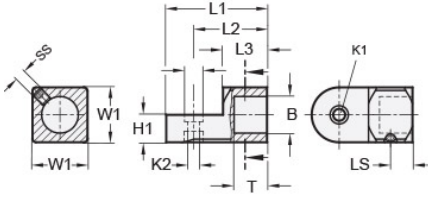




MT15-CSSWBH-A

Ruland Set Screw Swivel Clamp Joint, Swivel Thru Hole 6.5mm, Thru Hole 15mm, L 46mm, Aluminum



Description

Ruland MT15-CSSWBH-A is a swivel clamp joint with a blind hole for 15mm round tube, M6 set screws, 12.5mm base height, 25mm width and height, and 46mm overall length. It is designed to fit with MT15:16 swivel clamp bases, MT15 clamp connectors and mounting blocks, and MT15 round tubes. When combined with a swivel bases or attachment clamp joints, it is an ideal articulating mounting solution for screens, sensors, reflectors, plexiglass machine guards, and other components that require frequent adjustments. The blind hole reduces complication in assembly and limits the possibility of a mistake being made by inserting a tube too far into the connector for it to function properly. An MT15:16-SWALK-M6-25 adjustable clamping handle can be used to join it to other Ruland swivel components for rapid repositioning without the use of tools. This part is aluminum with a matte tumbled finish for use in most industrial environments. MT15-CSSWBH-A is manufactured by Otto Ganter, inventoried by Ruland, and RoHS3 compliant.

Product Specifications

Thru Hole Diameter B	15 mm	Counterbore 1 Diameter K1	10 mm
Counterbore 2 Diameter K2	6.5 mm	Overall Length L1	46 mm
Hub Length LH	20 mm	Edge To Center L2	33.5 mm
Base Height H1	12.5 mm	Width & Height W1	25 mm
Hole Depth T	15 mm	Set Screw SS	M6
Screw To Edge LS	10 mm	Material Specification	Aluminum
Manufacturer	JW Winco/ Otto Ganter	Country of Origin	Germany
Weight (lbs)	0.090800	UPC	634529230299
Tariff Code	7609.00.0000	UNSPC	31162908

Note 1 Performance ratings are for guidance only. The user must determine suitability for a particular application.

Prop 65  **WARNING** This product can expose you to the chemical Nickel (metallic), known to the State of California to cause cancer. For more information go to www.P65Warnings.ca.gov.