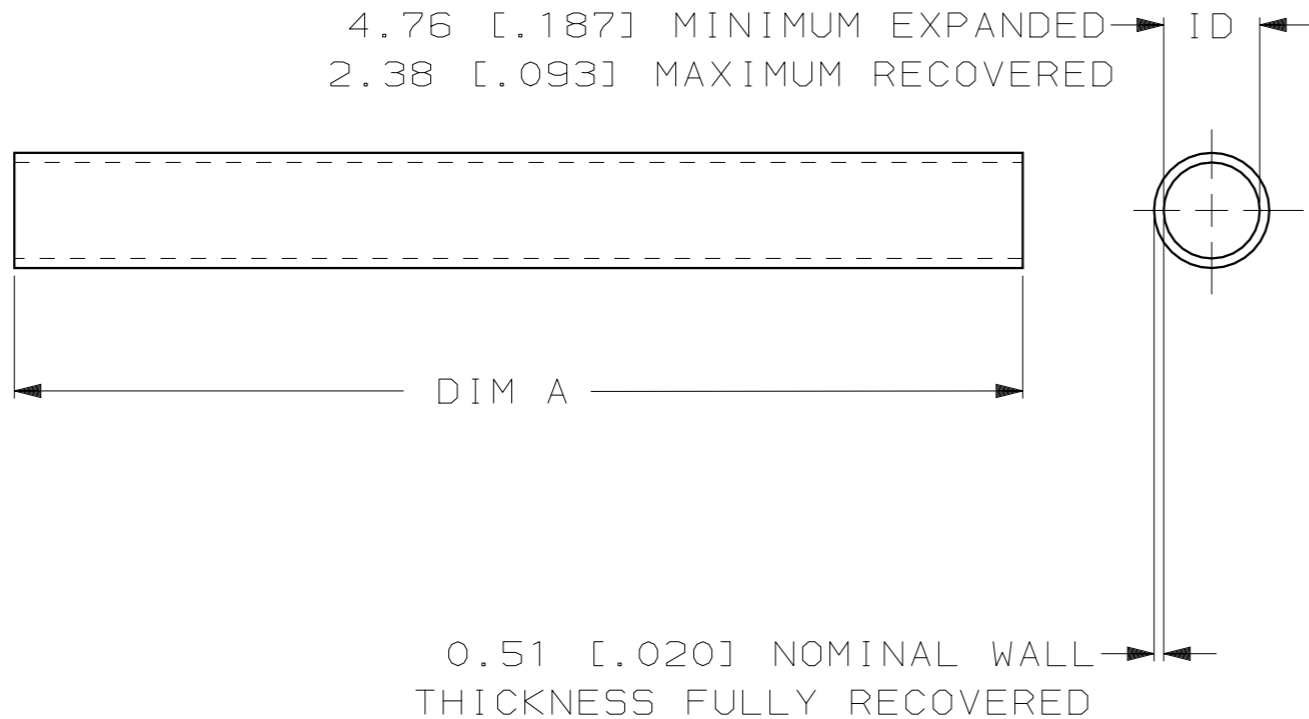


THIS DRAWING IS UNPUBLISHED. RELEASED FOR PUBLICATION, 19 .
 © COPYRIGHT 19 BY AMP INCORPORATED. ALL INTERNATIONAL RIGHTS RESERVED.

LOC EY	DIST 25	P	F	REVISIONS				
				ZONE	LTR	DESCRIPTION	DATE	APPD
					G	REV; EC 0230-0067-95	3-28-95	WC DH



- TUBING MEETS REQUIREMENTS OF MIL-I-23053/5-205-C.
- WEIGHT PER LINEAR FOOT/304.8 mm: 1.116 GRAMS/ .0025 POUND.

304.80M [1000 FEET] MINIMUM		603344-2		
1219.2 ±12.7 [48.00 ±.50]		603344-1		
DIM A (LENGTH)		PART NO		
DO NOT SCALE PRINT. UNLESS SPECIFIED DIMENSIONS IN mm [INCHES] TOLERANCES ON: 2 PLC DEC ± - 3 PLC DEC ± - ANGLES ± -	DR 7-15-94 W CHANDLER	AMP Incorporated Harrisburg, PA 17105-3608		
	CHK 10-13-94 D HUSSEY			
	MATERIAL CLEAR POLYOLEFIN	APPD 10-13-94 D KAAT	NAME AMPSULATION FP21, 3/16 INCH ID, CLEAR	
FINISH -	APPD 10-13-94 F HARNED	SIZE B	CAGE CODE 00779	DRAWING NO C-603344
	PRODUCT SPEC -	SCALE NONE	SHEET 1 OF 1	
	APPLICATION SPEC -	CUSTOMER DRAWING		
	WEIGHT			

THIS DRAWING IS A CONTROLLED DOCUMENT FOR AMP INCORPORATED. IT IS SUBJECT TO CHANGE AND THE CONTROLLING ENGINEERING ORGANIZATION SHOULD BE CONTACTED FOR THE LATEST REVISION.