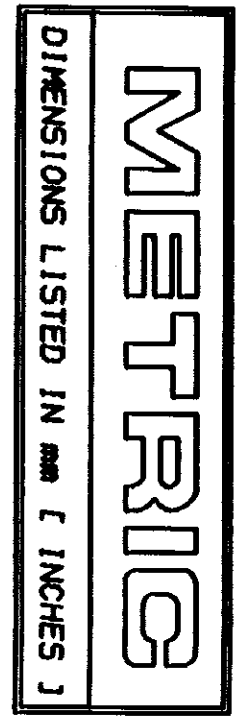
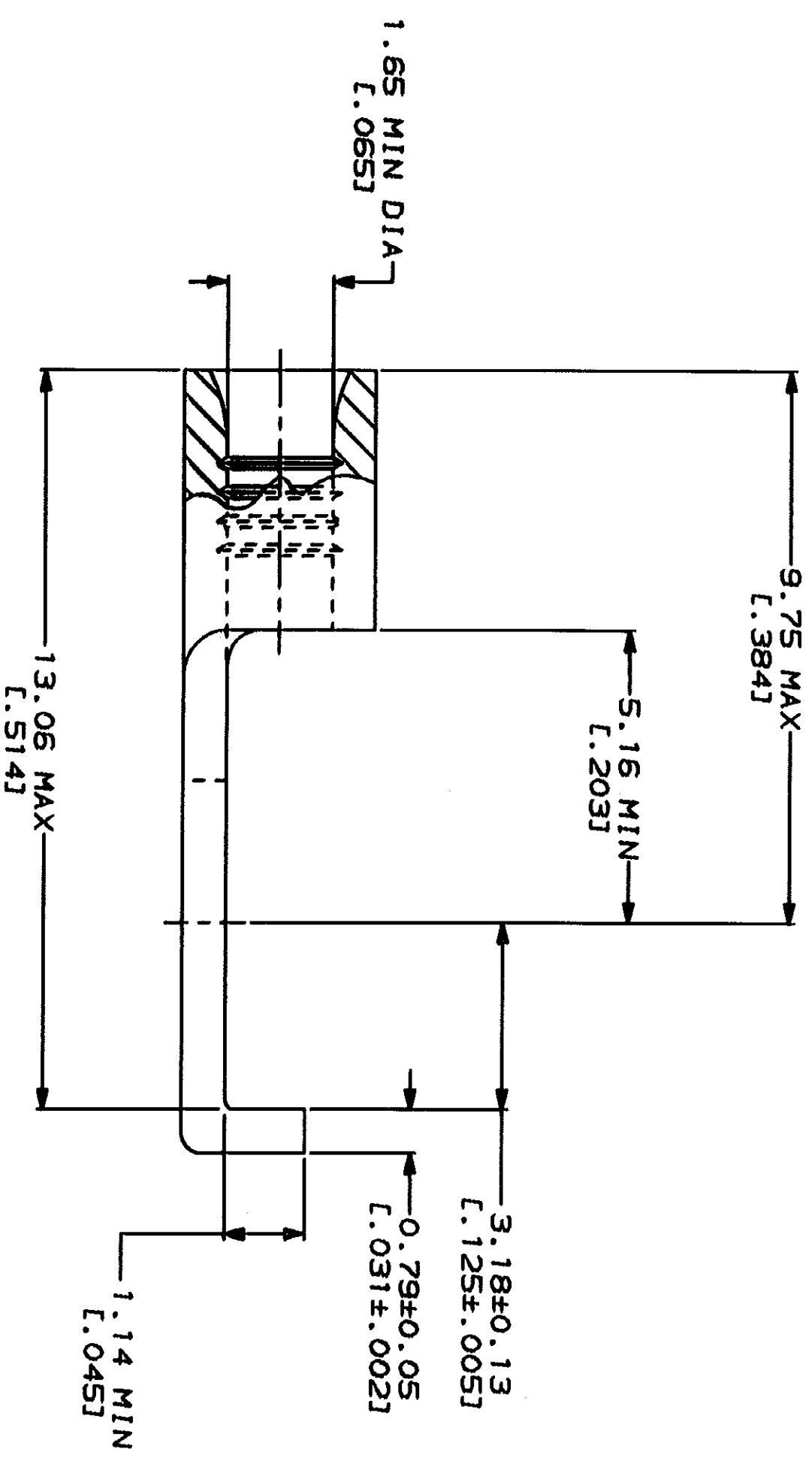
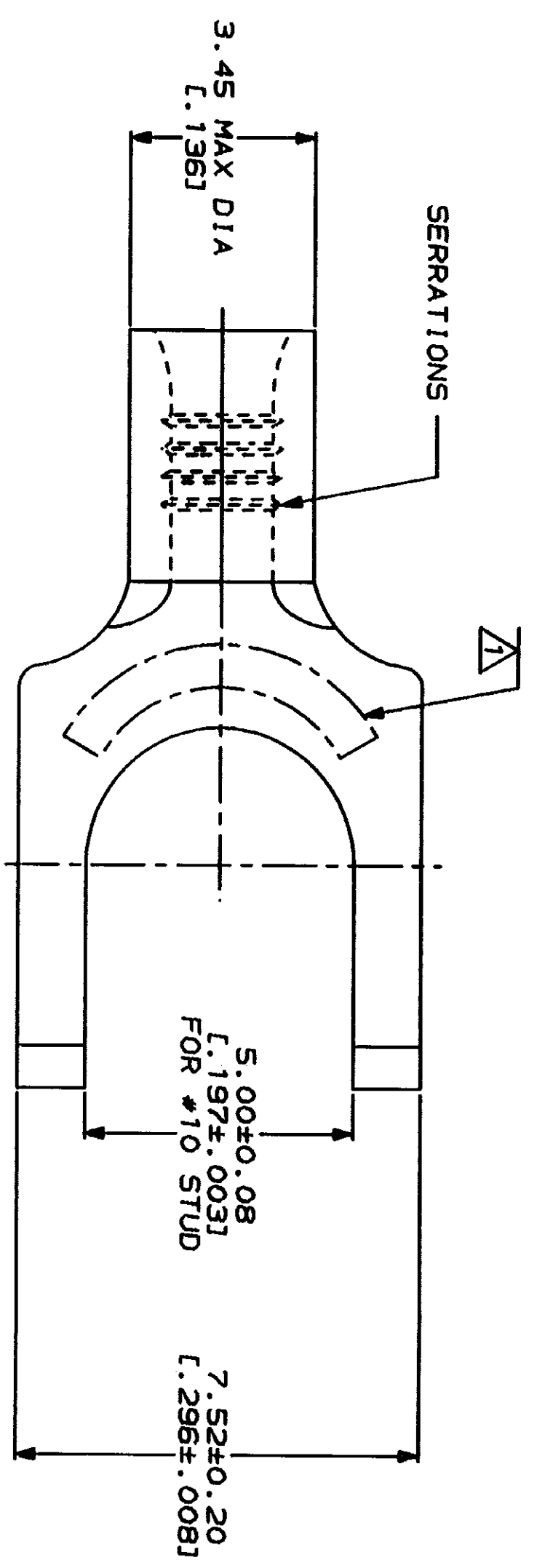


LOC	DIST	REV	DATE	APPD
G	14			
REVISIONS				
		REVISED PER 0720-0230-93		



AMP WIRE RANGE	E13288 Listed
22-16 AWG STRANDED	22-16 AWG STRANDED
LR7189 Certified	MILITARY P/N AND CLASS
NOT CERTIFIED	NOT APPLICABLE

△ STAMP AMP 22-18* APPROX AS SHOWN
 22-16 TERMINALS ARE STAMPED 22-18 IN
 ACCORDANCE WITH MILITARY SPECIFICATION
 MIL-T-7928, COMMERCIAL WIRE RANGE IS 22-16



AMP INCORPORATED
 CUSTOMER SERVICE SYSTEMS

FOR ADDITIONAL PRODUCT INFORMATION OR COPIES OF DRAWINGS AND TECHNICAL DOCUMENTS	PRODUCT INFORMATION CENTER 1-800-522-6752	MAX RECOMMENDED OPERATING TEMPERATURE: 170°C MAX
FOR APPLICATION TOOLING INFORMATION	TOOLING ASSISTANCE CENTER 1-800-722-1111	VOLTAGE RATING: NOT APPLICABLE
FOR ORDER ENTRY	1-800-526-5142	WIRE CROSS SECTIONAL AREA RANGE: 0.26-1.65mm ² [509-3,260] CIR MILS STRANDED

DO NOT SCALE PRINT.
 DIMENSIONS SPECIFIED UNLESS OTHERWISE INDICATED.
 TOLERANCES IN DIMENSIONS:
 2 PLC DEC ±
 3 PLC DEC ±
 ANGLES
 MATERIAL
 COPPER PER ASTM B-152 ANNEALED
 FINISH
 TIN PLATE
 0.00254 [L.000100] MIN THK PER MIL-T-10727

DR 3-2-93 TA BRINKMAN	CHK 3-2-93 DA PATTERSON
APPD 3-2-93 DE MILLER	APPD 3-2-93 JL HECKLEY
PRODUCT SPEC	
APPLICATION SPEC	

AMP Incorporated
 Horshurst, PA 17705-3508

328522
 PART NO

SIZE	CAGE CODE	DRAWING NO
00779	00779	328522
SCALE	10:1	