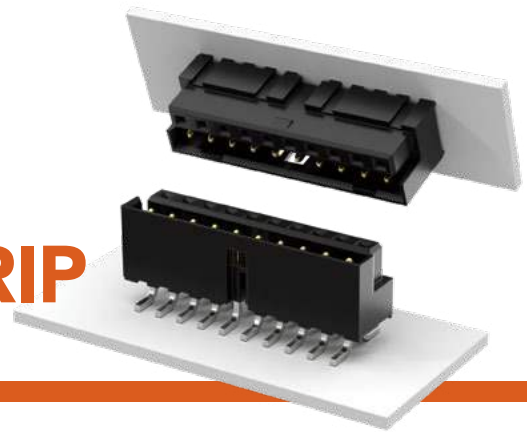


# SELF MATING HERMAPHRODITIC STRIP

(2.00 mm) .0787" PITCH • LS2 SERIES



**LS2**  
Mates:  
LS2

LS2	1	NO. PINS PER ROW	LEAD STYLE	PLATING OPTION	D	TAIL OPTION	OPTION
-----	---	------------------	------------	----------------	---	-------------	--------

05, 10, 15,  
20, 25, 30

**-01**  
= Through-hole

**-02**  
= Surface Mount

**-F**  
= Gold flash on contact,  
Matte Tin on tail

**-L**  
= 10 μ" (0.25 μm)  
Gold on contact,  
Matte Tin on tail

-01 only

**-RA1**  
= Right-angle  
(Shroud Down)

**-RA2**  
= Right-angle  
(Shroud Up)

**-K**  
= (6.30 mm)  
.248" DIA  
Polyimide  
Film Pick &  
Place Pad  
(-02 only)

**-TR**  
= Tape &  
Reel

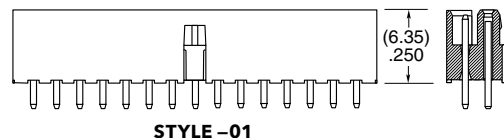
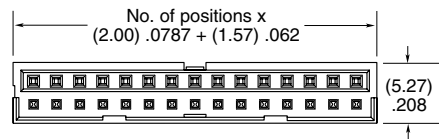
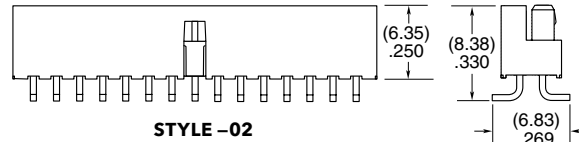
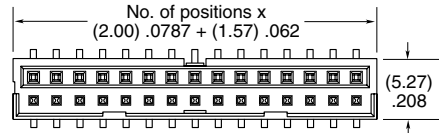
**-FR**  
= Full Reel  
Tape & Reel  
(must order  
max. quantity  
per reel;  
contact  
Samtec for  
quantity  
breaks)

## SPECIFICATIONS

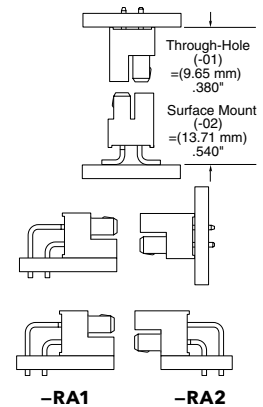
**Insulator Material:**  
Black Liquid Crystal  
Polymer  
**Contact Material:**  
Phosphor Bronze  
**Plating:**  
Au or Sn over  
50 μ" (1.27 μm) Ni  
**Current Rating:**  
3.2 A per pin  
(6 adjacent pins powered)  
**Voltage Rating:**  
475 VAC mated with LS2  
**Operating Temp Range:**  
-55 °C to +125 °C

## PROCESSING

**Lead-Free Solderable:**  
Yes  
**SMT Lead Coplanarity:**  
(0.15 mm) .006" max\*  
\*(.004" stencil solution  
may be available; contact  
IPG@samtec.com)



## APPLICATION



-RA1

-RA2

-RA1

-RA2

## ALSO AVAILABLE MOQ Required

Alignment pin  
Other platings  
Other stack heights

**Note:**  
Some lengths, styles and  
options are non-standard,  
non-returnable.