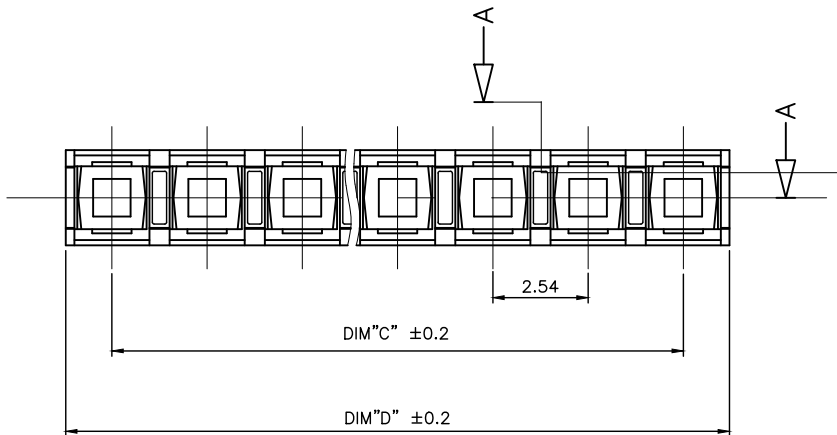
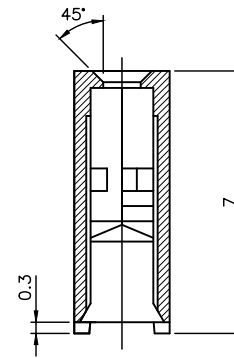
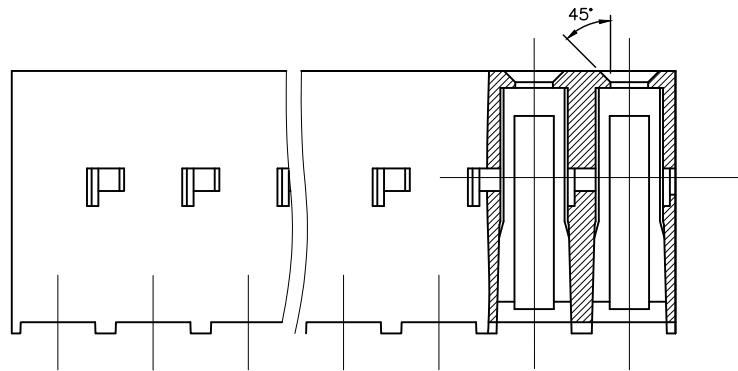
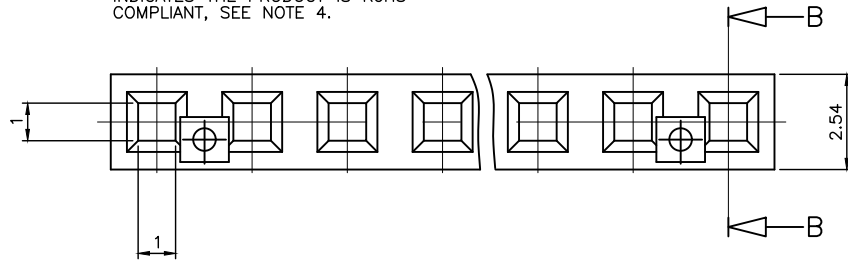


PRODUCT NUMBER	MATERIAL	DIM"C" & DIM"D"
65235-6XXLF	SEE NOTE 1	SEE SHEET 2
65235-9XXLF	SEE NOTE 2	SEE SHEET 2

WHEN NEEDED, SUFFIX LETTER "LF" INDICATES THE PRODUCT IS RoHS COMPLIANT, SEE NOTE 4.



NOTES:

- 1 - MATERIAL HOUSING: TERMOPLASTIC GLASS FILLED FLAME RETARDANT PER UL94 V-0, COLOR BLACK
 - 2 - MATERIAL HOUSING: TERMOPLASTIC POLYESTER, 30% GLASS FILLED COLOUR BLUE, FLAME RETARDANT PER UL94 V-0.
 - 3 - ABOVE 25 POS. ON SPECIAL REQUEST.
 - 4 - RoHS COMPATIBLE PRODUCT SPECIFICATIONS
 - a - LABELING:
 - MEETS PACKAGING SPECS AS PER GS-14-920
 - b - LEGAL STATEMENT: SEE GS-22-008
- THE PRODUCT IS NOT INTENDED TO BE EXPOSED TO A MANUFACTURING SOLDER PROCESS.

CUSTOMER DRAWING FOR REFERENCE ONLY

mat'l. code		surface		tolerance		projection		product family	
SEE NOTES		ISO 1302	✓	ISO 406	ISO 1011			DUBOX VCC SR	
ltr	ecr no	dr	date	tolerances unless otherwise specified		mm		title	
A	F60655	PNZ	96.09.19	angles	linear			HOUSING	
B	F03-0284	DLE	03.10.07			scale 10:1		dwg no	
C	F06-0198	DLE	06.06.13					sheet 1 of 2	
D	F-26374	DDE	17.03.15	dr	P.NIZZI	96.09.19		65235	
E	F-32711	LMU	19.02.18	engr	JM.PHAMVAN	96.09.19		A3	
				chr	P.NIZZI	96.09.19		type	
				appd	JMP	96.09.19		CUSTOMER Drawing	
sheet index	revision sheet	E	D						
	1	2							

PRODUCT NUMBER	NB OF POS.	DIM"C"±0.2	DIM"D"±0.2
65235-X02LF	1x02	2.54	5.00
65235-X03LF	1x03	5.08	7.54
65235-X04LF	1x04	7.62	10.08
65235-X05LF	1x05	10.16	12.62
65235-X06LF	1x06	12.70	15.16
65235-X07LF	1x07	15.24	17.70
65235-X08LF	1x08	17.78	20.24
65235-X09LF	1x09	20.32	22.78
65235-X10LF	1x10	22.86	25.32
65235-X11LF	1x11	25.40	27.86
65235-X12LF	1x12	27.94	30.40
65235-X13LF	1x13	30.48	32.94
65235-X14LF	1x14	33.02	35.48
65235-X15LF	1x15	35.56	38.02
65235-X16LF	1x16	38.10	40.56
65235-X17LF	1x17	40.64	43.10
65235-X18LF	1x18	43.18	45.64
65235-X19LF	1x19	45.72	48.18
65235-X20LF	1x20	48.26	50.72
65235-X21LF	1x21	50.80	53.26
65235-X22LF	1x22	53.34	55.80
65235-X23LF	1x23	55.88	58.34
65235-X24LF	1x24	58.42	60.88
65235-X25LF	1x25	60.96	63.42
65235-X26LF	1x26	63.50	65.96

PRODUCT NUMBER	NB OF POS.	DIM"C"±0.2	DIM"D"±0.2
65235-X27LF	1x27	66.04	68.50
65235-X28LF	1x28	68.58	71.04
65235-X29LF	1x29	71.12	73.58
65235-X30LF	1x30	73.66	76.12
65235-X31LF	1x31	76.20	78.66
65235-X32LF	1x32	78.74	81.20
65235-X33LF	1x33	81.28	83.74
65235-X34LF	1x34	83.82	86.28
65235-X35LF	1x35	86.36	88.82
65235-X36LF	1x36	88.90	91.36
65235-X37LF	1x37	91.44	93.90
65235-X38LF	1x38	93.98	96.44
65235-X39LF	1x39	96.52	98.98
65235-X40LF	1x40	99.06	101.52
65235-X41LF	1x41	101.60	104.06
65235-X42LF	1x42	104.14	106.60
65235-X43LF	1x43	106.68	109.14
65235-X44LF	1x44	109.22	111.68
65235-X45LF	1x45	111.76	114.22
65235-X46LF	1x46	114.30	116.76
65235-X47LF	1x47	116.84	119.30
65235-X48LF	1x48	119.38	121.84
65235-X49LF	1x49	121.92	124.38
65235-X50LF	1x50	124.46	126.92

mat'l. code		surface		tolerance		projection		product family	
		ISO 1302		ISO 406 ISO		1st		DX VCC SR	
lfr ecn no dr date		tolerances unless otherwise specified		angles		mm		title	
A F06055 PNZ 06.09.19		linear		.0±.x		←		HOUSING	
B F06-0198 DLE 06.06.13		O±x'		.00±.0x		scale N/A		dwg no sheet 2 of 2 size	
C F-26374 DDE 17.03.15		D LEGRAND 06.06.12		0.00±.00x				65235 A2	
D F-32711 LMU 19.02.18		enrg P NIZZI 06.06.12						type Product Customer Drawing	
		chr D LE 06.06.12							
		appd P NZ 06.06.12							
sheet index		revision sheet							