

EasyPROTO™

Manual

All Mikroelektronika's development systems feature a large number of peripheral modules expanding microcontroller's range of application and making the process of program testing easier. In addition to these modules, it is also possible to use numerous additional modules linked to the development system through the I/O port connectors. Some of these additional modules can operate as stand-alone devices without being connected to the microcontroller.

Additional Board

 **MikroElektronika**

SOFTWARE AND HARDWARE SOLUTIONS FOR EMBEDDED WORLD ...making it simple

EasyPROTO Additional Board

The *EasyPROTO* additional board is used to connect the microcontroller pins with a proto board. It is connected to some of the development system's ports via a 2x5 female connector provided on a flat cable, whereas for connection with a proto board the *EasyPROTO* additional board uses a 1x10 male connector.

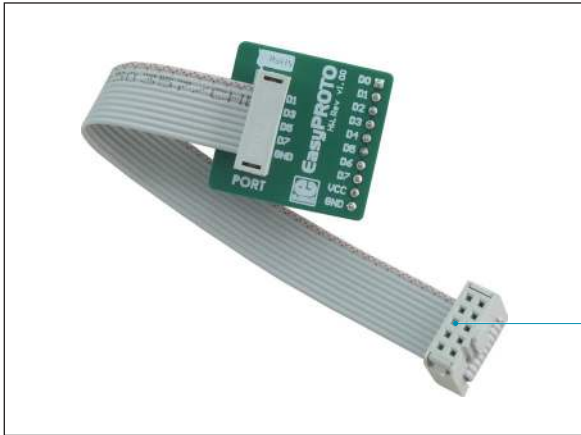


Figure 1: *EasyPROTO* additional board

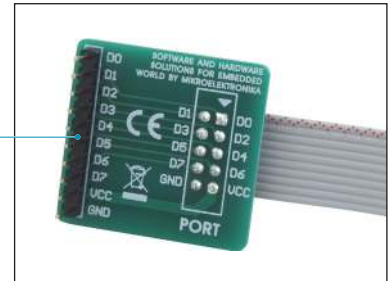


Figure 2: Additional board's bottom view

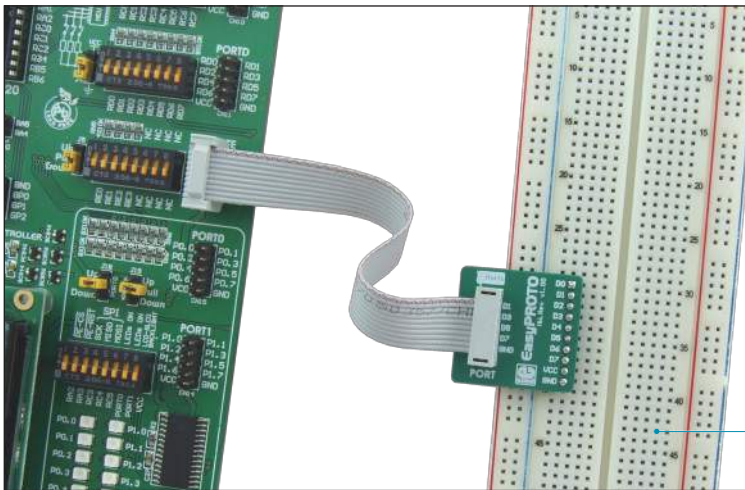


Figure 3: Additional board connected to a development system and a proto board

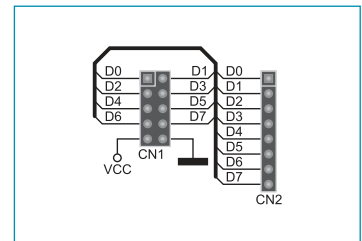


Figure 4: Additional board connection schematic

Proto board provides pads that enable components to be placed without soldering



MikroElektronika
SOFTWARE AND HARDWARE SOLUTIONS FOR EMBEDDED WORLD ...making it simple

If you want to learn more about our products, please visit our website at www.mikroe.com

If you are experiencing some problems with any of our products or just need additional information, please place your ticket at www.mikroe.com/en/support

If you have any questions, comments or business proposals, do not hesitate to contact us at office@mikroe.com