



SAW multimedia filters

Series/Type: **K9351M**

The following products presented in this data sheet are being withdrawn.

Ordering Code	Substitute Product	Date of Withdrawal	Deadline Last Orders	Last Shipments
B39380K9351M100		2011-01-14	2011-09-30	2012-09-30

For further information please contact your nearest EPCOS sales office, which will also support you in selecting a suitable substitute. The addresses of our worldwide sales network are presented at www.epcos.com/sales.

© EPCOS AG 2015. Reproduction, publication and dissemination of this publication, enclosures hereto and the information contained therein without EPCOS' prior express consent is prohibited.

EPCOS AG is a TDK Group Company.

SAW Components
K 9351 M
IF Filter for Audio Applications
38,00 MHz
Data Sheet
Standard

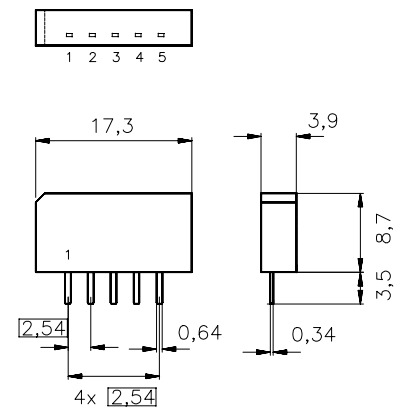
- B/G
- D/K
- I

 Plastic package **SIP5K**
Features

- TV IF audio filter with pass band for sound carriers between 31,45 MHz and 32,50 MHz

Terminals

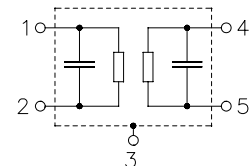
- Tinned CuFe alloy



Dimensions in mm, approx. weight 1,0 g

Pin configuration

- | | |
|---|-----------------------|
| 1 | Input |
| 2 | Input - ground |
| 3 | Chip carrier - ground |
| 4 | Output |
| 5 | Output |



Type	Ordering code	Marking and package according to	Packing according to
K 9351 M	B39380-K9351-M100	C61157-A1-A15	F61074-V8067-Z000

Maximum ratings

Operable temperature range	T_A	-25/+65	°C	
Storage temperature range	T_{stg}	-40/+85	°C	
DC voltage	V_{DC}	5	V	between any terminals
AC voltage	V_{pp}	10	V	between any terminals

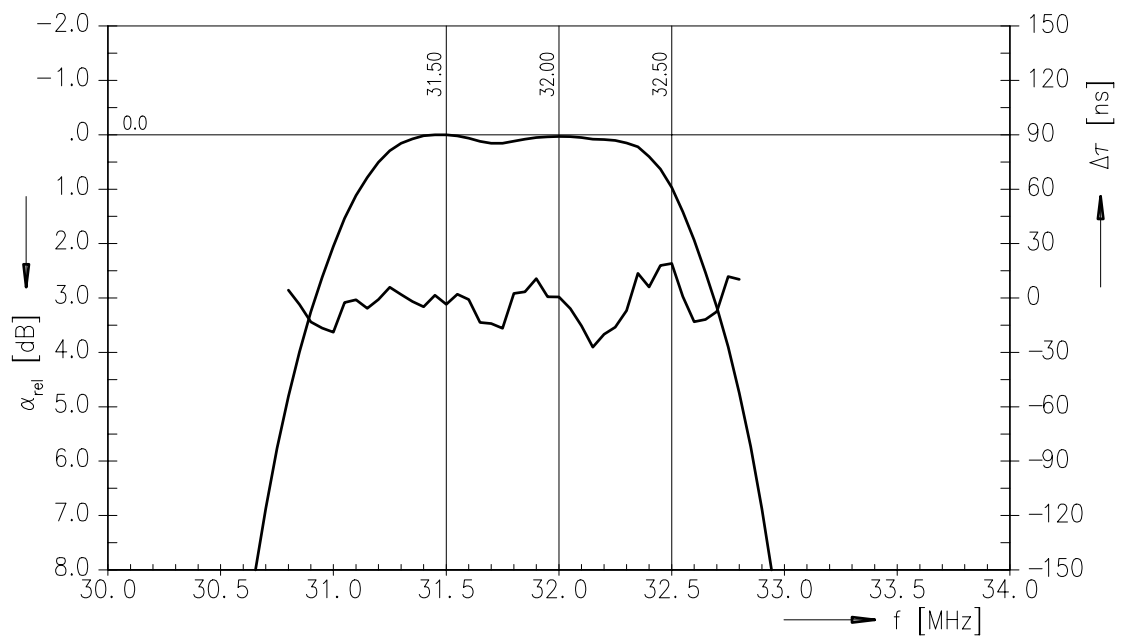
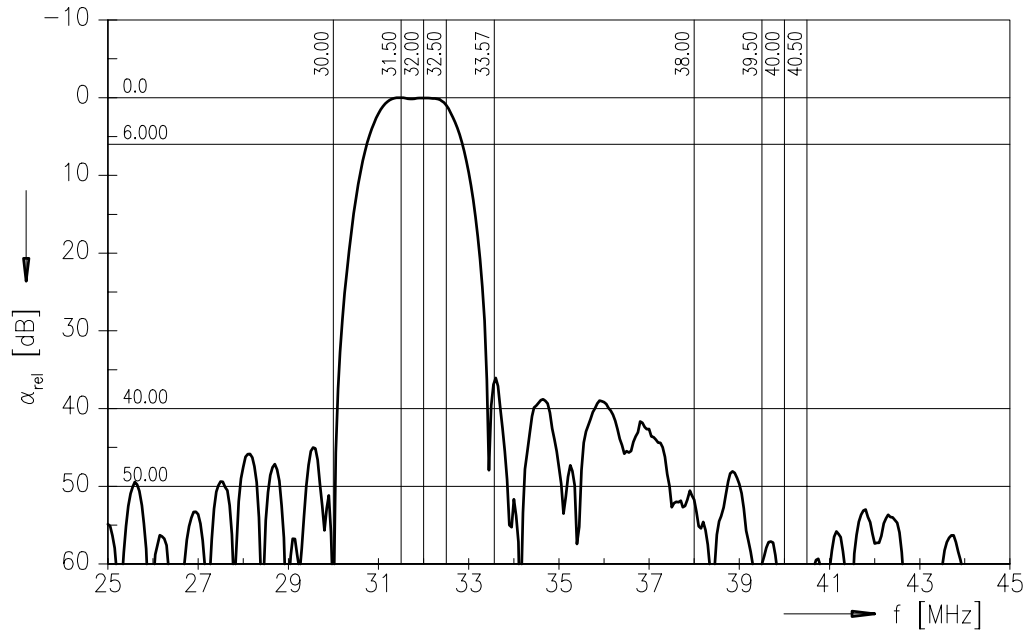
SAW Components
K 9351 M
IF Filter for Audio Applications
38,00 MHz
Data Sheet
Characteristics

Reference temperature: $T_A = 25\text{ °C}$
 Terminating source impedance: $Z_S = 50\ \Omega$
 Terminating load impedance: $Z_L = 2\text{ k}\Omega \parallel 3\text{ pF}$

		min.	typ.	max.	
Insertion attenuation					
	α				
Reference level for the following data	31,50 MHz	10,2	11,7	13,2	dB
Relative attenuation					
	α_{rel}				
Sound carrier	31,45 MHz	-1,0	0,0	1,0	dB
	32,00 MHz	-0,9	0,1	1,1	dB
	32,50 MHz	0,1	1,1	2,1	dB
Picture carrier	38,00 MHz	40,0	48,0	—	dB
Color carrier	33,57 MHz	30,0	37,0	—	dB
Adjacent picture carrier	30,00 MHz	40,0	52,0	—	dB
Adjacent sound carrier	39,50 MHz	45,0	58,0	—	dB
	40,00 MHz	45,0	62,0	—	dB
	40,50 MHz	45,0	60,0	—	dB
Lower sidelobe	25,00 ... 30,00 MHz	39,0	46,0	—	dB
Upper sidelobe	38,00 ... 45,00 MHz	40,0	47,0	—	dB
Impedance at 31,50 MHz					
Input:	$Z_{IN} = R_{IN} \parallel C_{IN}$	—	1,4 \parallel 11,6	—	k Ω \parallel pF
Output:	$Z_{OUT} = R_{OUT} \parallel C_{OUT}$	—	1,4 \parallel 4,9	—	k Ω \parallel pF
Temperature coefficient of frequency					
	TC_f	—	-72	—	ppm/K

Data Sheet

Frequency response



SAW Components

K 9351 M

IF Filter for Audio Applications

38,00 MHz

Data Sheet

Published by EPCOS AG

Surface Acoustic Wave Components Division, SAW CE MM PD

P.O. Box 80 17 09, D-81617 München

© EPCOS AG 2001. All Rights Reserved.

As far as patents or other rights of third parties are concerned, liability is only assumed for components per se, not for applications, processes and circuits implemented within components or assemblies.

The information describes the type of component and shall not be considered as assured characteristics.

Terms of delivery and rights to change design reserved.

For questions on technology, prices and delivery please contact the sales offices of EPCOS AG or the international representatives.

Due to technical requirements components may contain dangerous substances. For information on the type in question please also contact one of our sales offices.