

Datasheet

0.69-0.96GHz, 1.7-2.7GHz
External / In-building

Features:

High performing full 4G LTE band antenna with SMA/RP-SMA connector for indoor applications

Applications:

- CPE – Router, Set-top boxes, Gateway
- IoT devices
- 4G LTE Mesh
- Smart Metering
- Robotics



Stick Antenna



Electrical Specifications

Antenna Characteristics

Antenna Type	Radiation Pattern	Polarization	Max. Input Power	Impedance
Stick Antenna	Omni	Linear	2W	50Ω

Frequency (GHz)	0.69~0.96	1.71~2.17	2.3~2.7
Return Loss (dB)	< -7	< -8	< -10
Gain, Peak / Average (dB)	3.1 / -2.6	1.7 / -3.3	2.2 / -3.6
Efficiency / Average (%)	55	47	44

Mechanical Specifications

Environmental

Temperature Range (°C)

-40 to 85

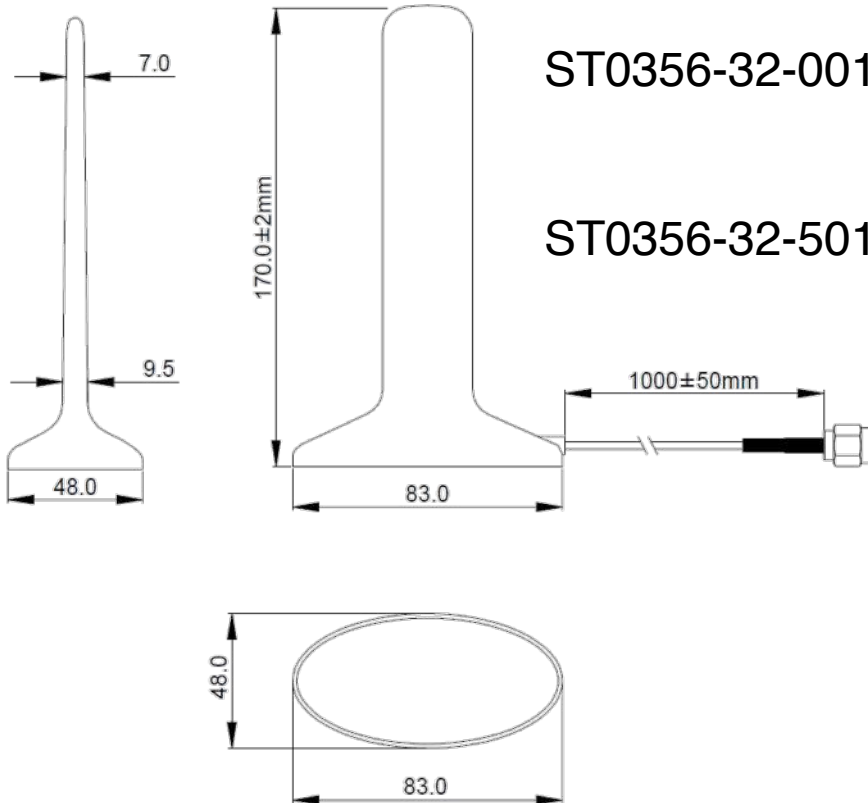
Humidity

Non-condensing 65°C 95% RH

RoHS Compliant

Part Number	Length (mm)	Weight (g)	Connector Type	Radome
ST0356-32-001-A	170	104.5	SMA Plug	ABS
ST0356-32-501-A	170	104.5	RP-SMA Plug	ABS

Mechanical Drawing



ST0356-32-001-A



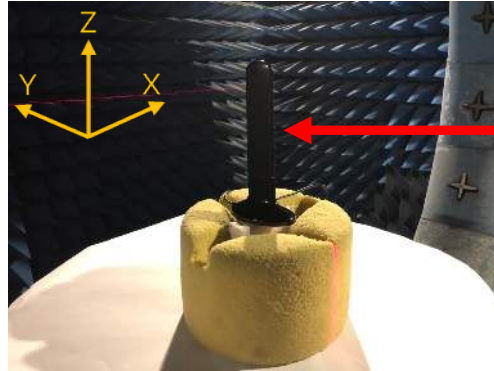
SMA Plug

ST0356-32-501-A



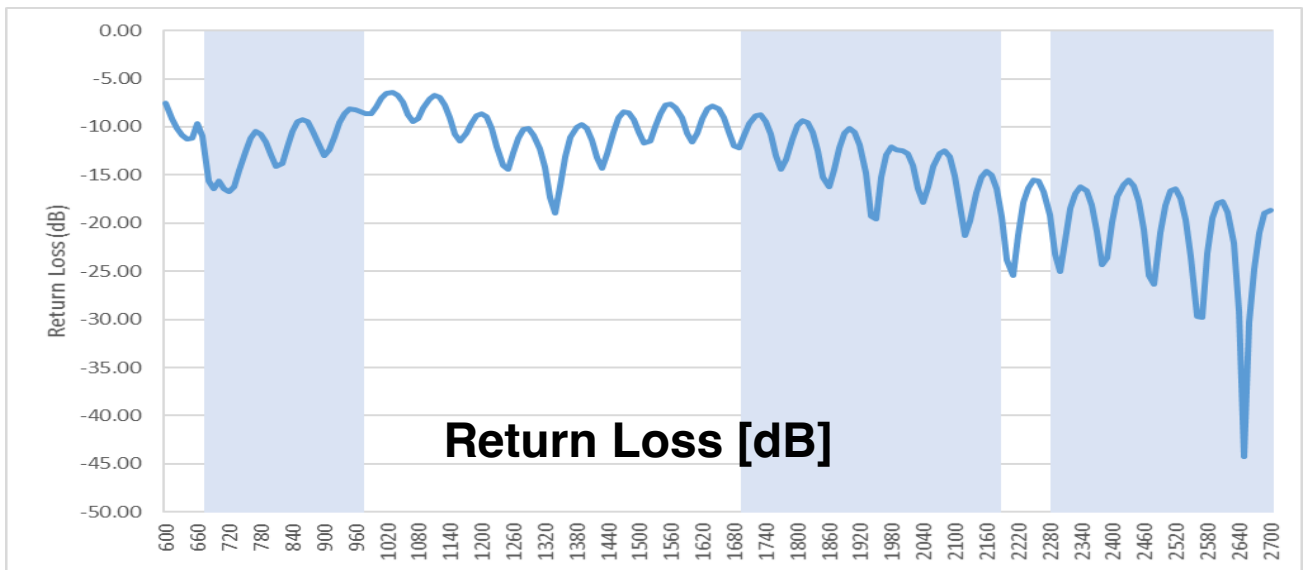
RP-SMA Plug

Charts in Free Space

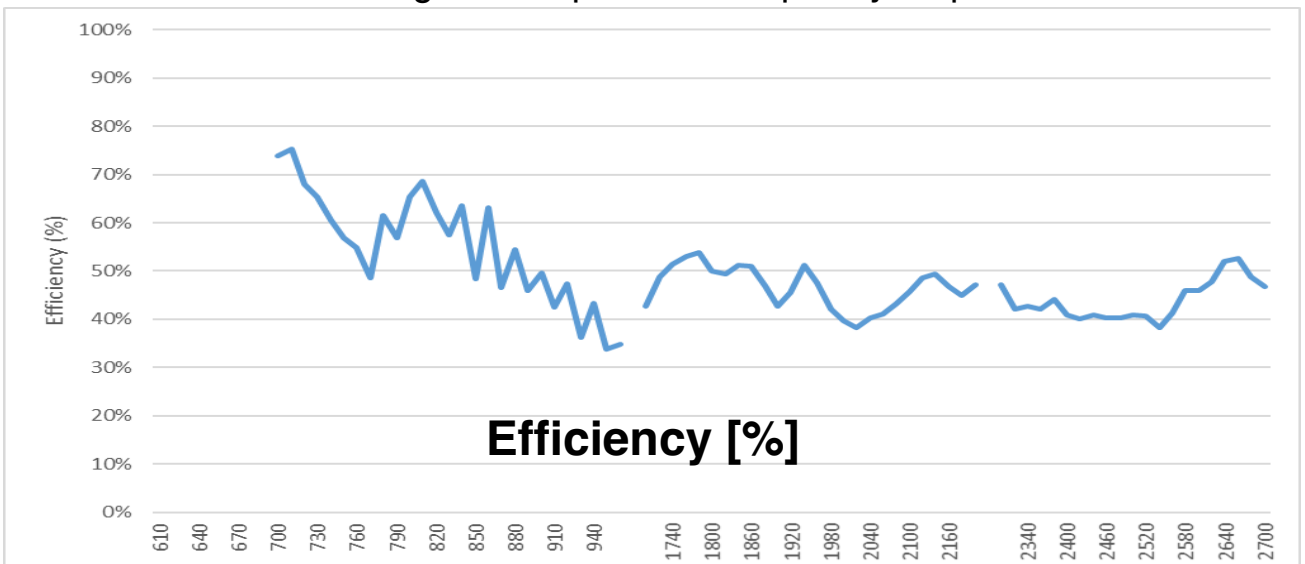


ST0356-32-001-A

Test setup, measurement performed in 3D Anechoic Chamber

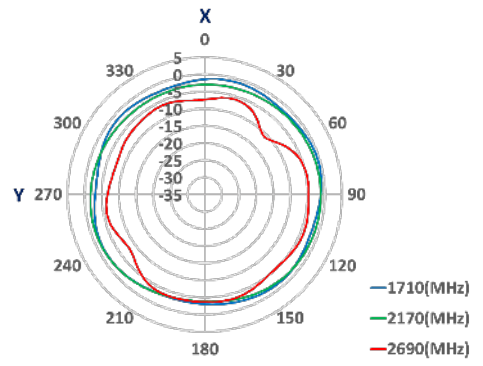
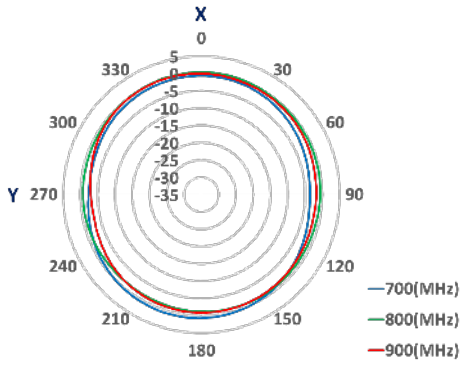


Blue background represents frequency response.

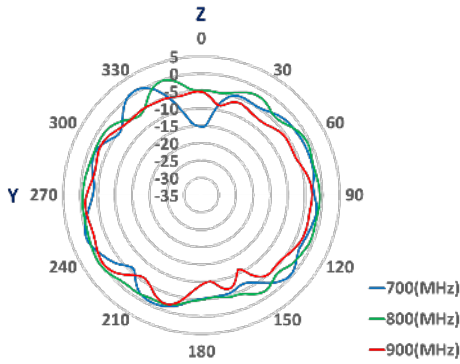


Radiation Pattern - Free Space

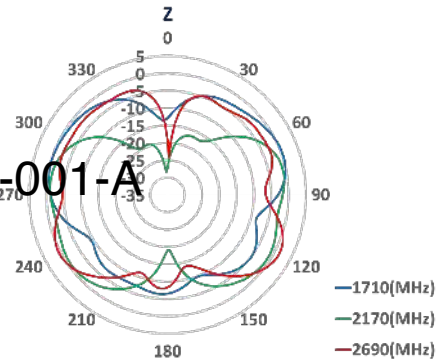
XY - Plane



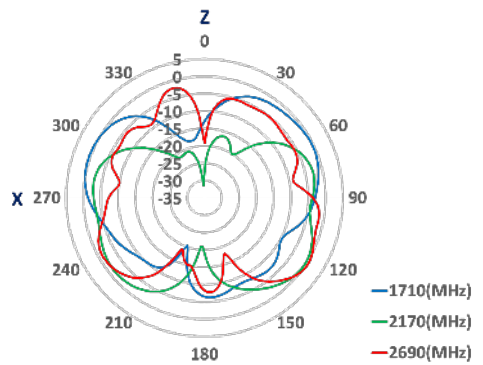
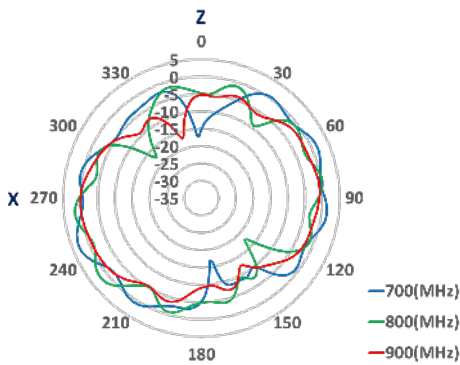
YZ - Plane



ST0356-32-001-A



XZ - Plane



Revisions

Rev	Description	Date	ECN	Approval
A	Initial Release	2022-10-25	ST0356-32-X01-A-RA00	ATC
B	RF Performance update	2023-01-02	ST0356-32-X01-A-RB00	ATC

NOTICE - These drawings, specifications, or other data (1) are, and remain the property of Amphenol corp. (2) must be returned upon request; and (3) are confidential and not to be disclosed to any person other than those to whom they are given by Amphenol Corp. the furnishing of these drawings, specifications, or other data by Amphenol Corp., or to any other person to anyone for any purpose is not to be regarded by implication or otherwise in any manner licensing, granting rights to permitting such holder or any other person to manufacture, use or sell any product, process or design, patented or otherwise, that may in any way be related to or disclosed by said drawings, specifications, or other data.