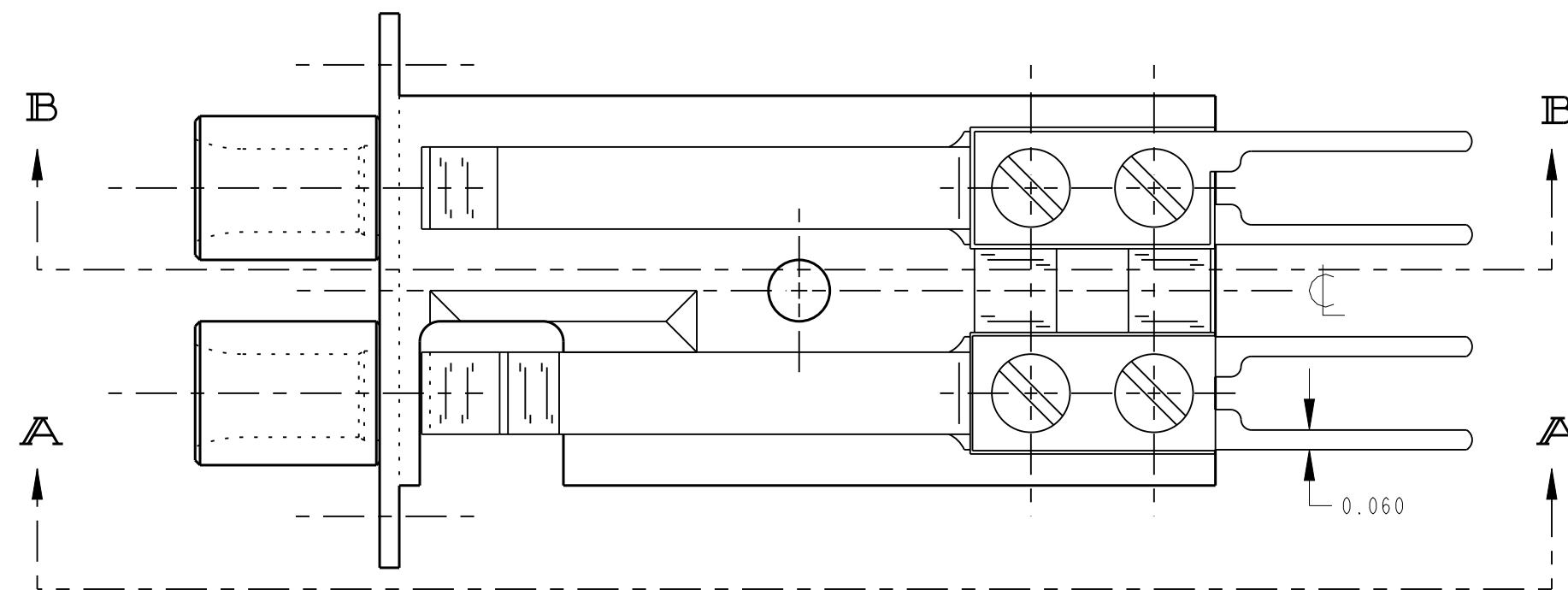
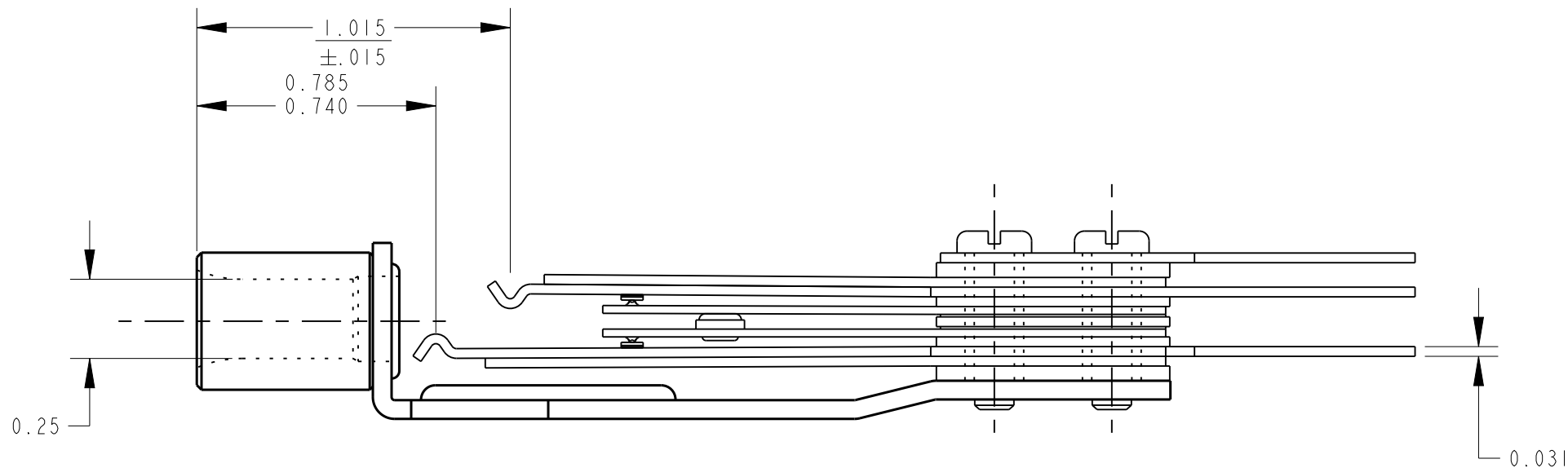
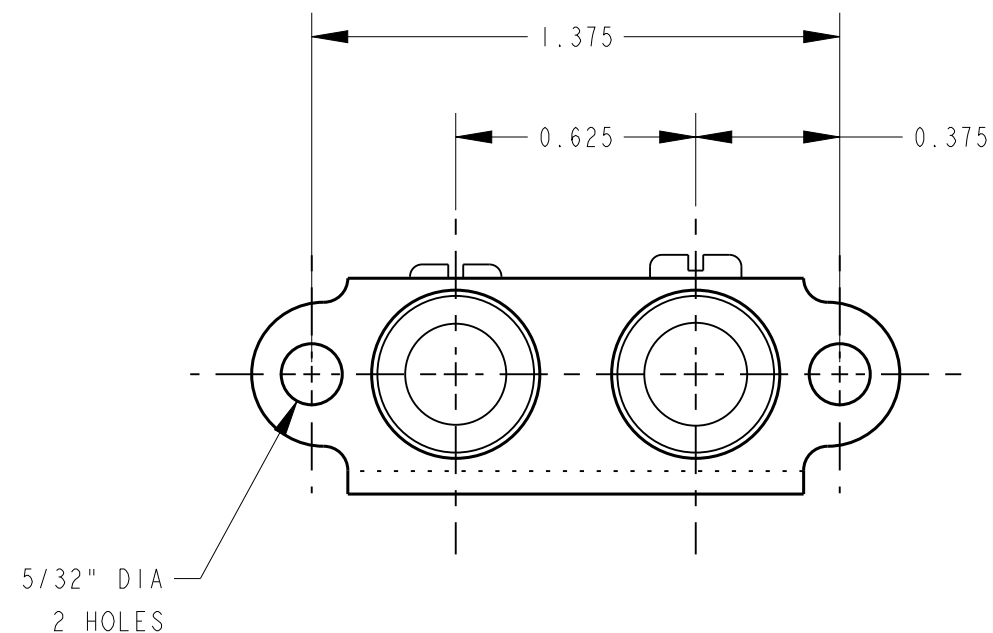


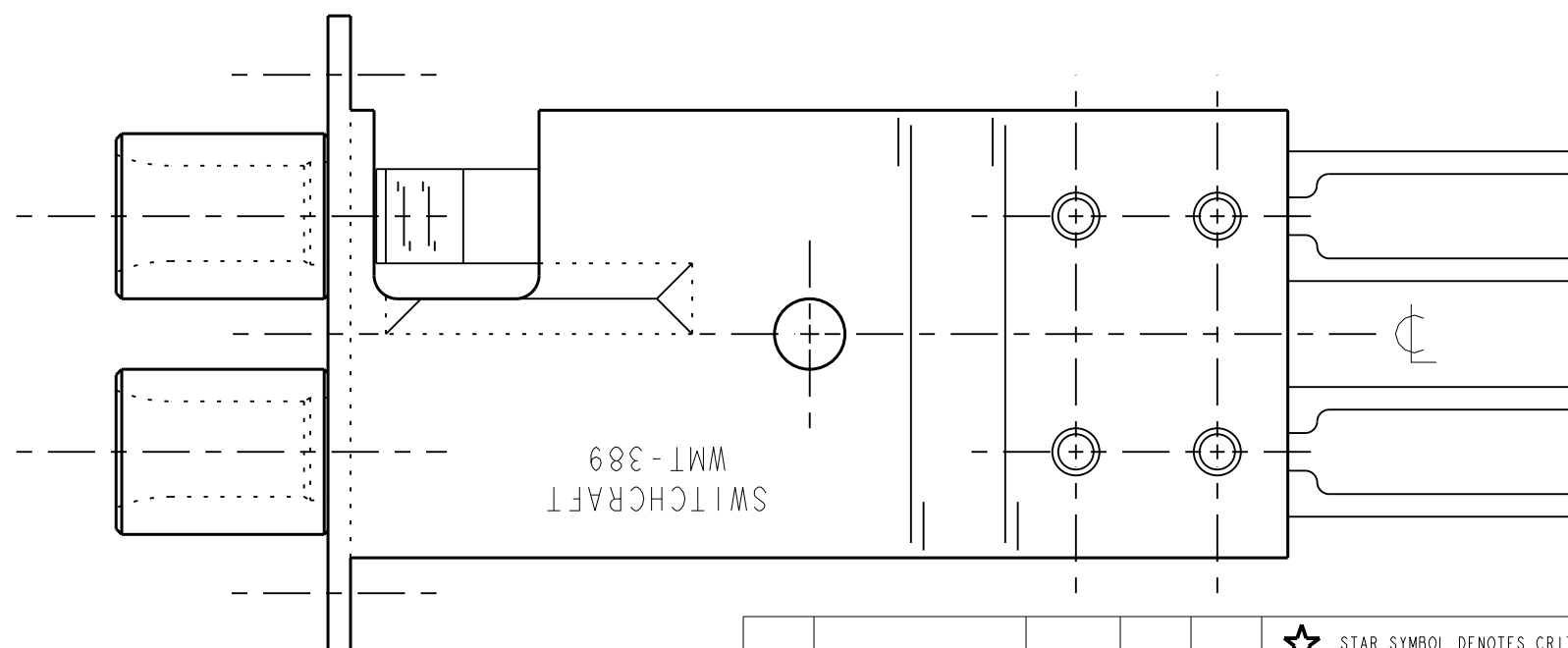
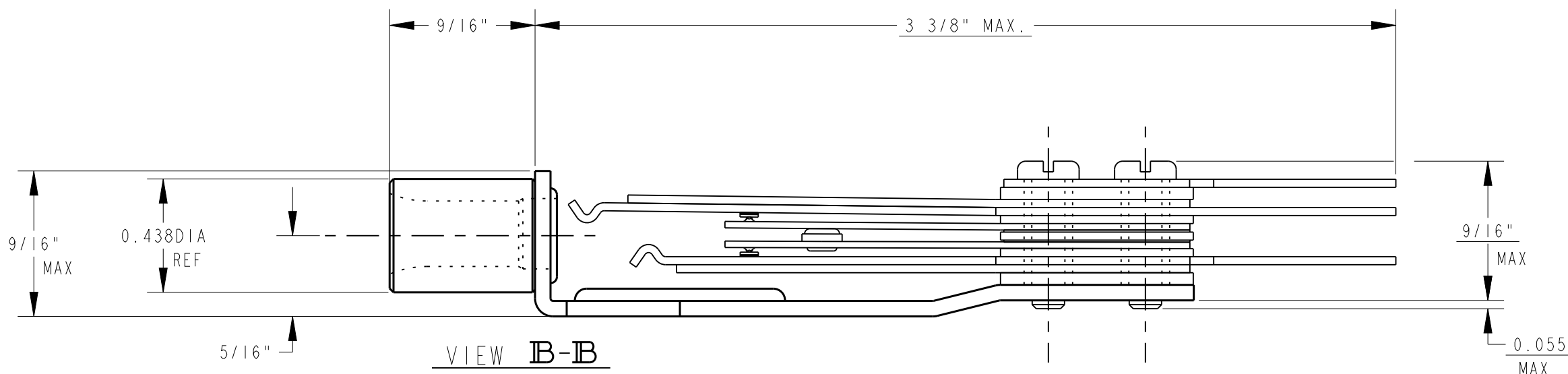
SCHEMATIC CIRCUIT



VIEW A-A WITH VIEW B-B OMITTED



VIEW B-B



SWITCHCRAFT
WMT-389

CUSTOMER DRAWING

- NOTES:
 1. MATERIALS:
 FRAME - CRS, CADMIUM PLATED
 BUSHING - BRASS - NICKEL PLATED
 SPRINGS - SPECIAL COPPER ALLOY
 CONTACTS - PALLADIUM
 SPACERS - PHENOLIC
 INSULATORS - THERMOPLASTIC
 SCREWS - CRS, NICKEL PLATED

REV	ECO NUMBER	DATE	BY	APVD
B	19920	6-30-95	TJK	TJK
REVISIONS				

★ STAR SYMBOL DENOTES CRITICAL DIMENSION
 UNLESS OTHERWISE SPECIFIED
 1. ALL DIMENSIONS IN INCHES
 - TWO PLACE DECIMALS ±0.01
 - THREE PLACE DECIMALS ±0.005
 - ANGLES ±1°
 - ALL DIA. CONCENTRIC WITHIN 0.005 T.I.R.
 2. FEATURES ON THE SAME CENTERLINE MUST BE ALIGNED WITHIN ±0.002
 3. REMOVE ALL BURRS
 DO NOT SCALE DRAWING

THIS DRAWING DESCRIBES A DESIGN CONSIDERED PROPRIETARY IN NATURE, DEVELOPED AND MANUFACTURED BY SWITCHCRAFT INC. AND IS RELEASED ON A CONFIDENTIAL BASIS FOR IDENTIFICATION PURPOSES ONLY.				
SIZE	WIDTH	MULT	LBS/M	TEMPER
FINISH		MATERIAL		
SPEC No.		SPEC No.		
FIRST USED ON		SCALE		
		NONE		
DATE DRAWN	BY	CHKD	APVD	Switchcraft [®]
2-4-76	RB	ES	KIJ	
NAME				REV
TWIN MT-JACK WIRE WRAP TERMINALS				B
PART No.				
WMT389				