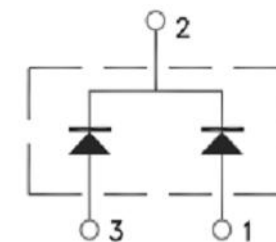
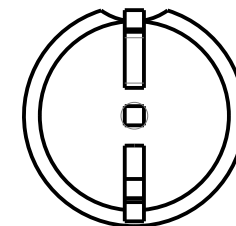
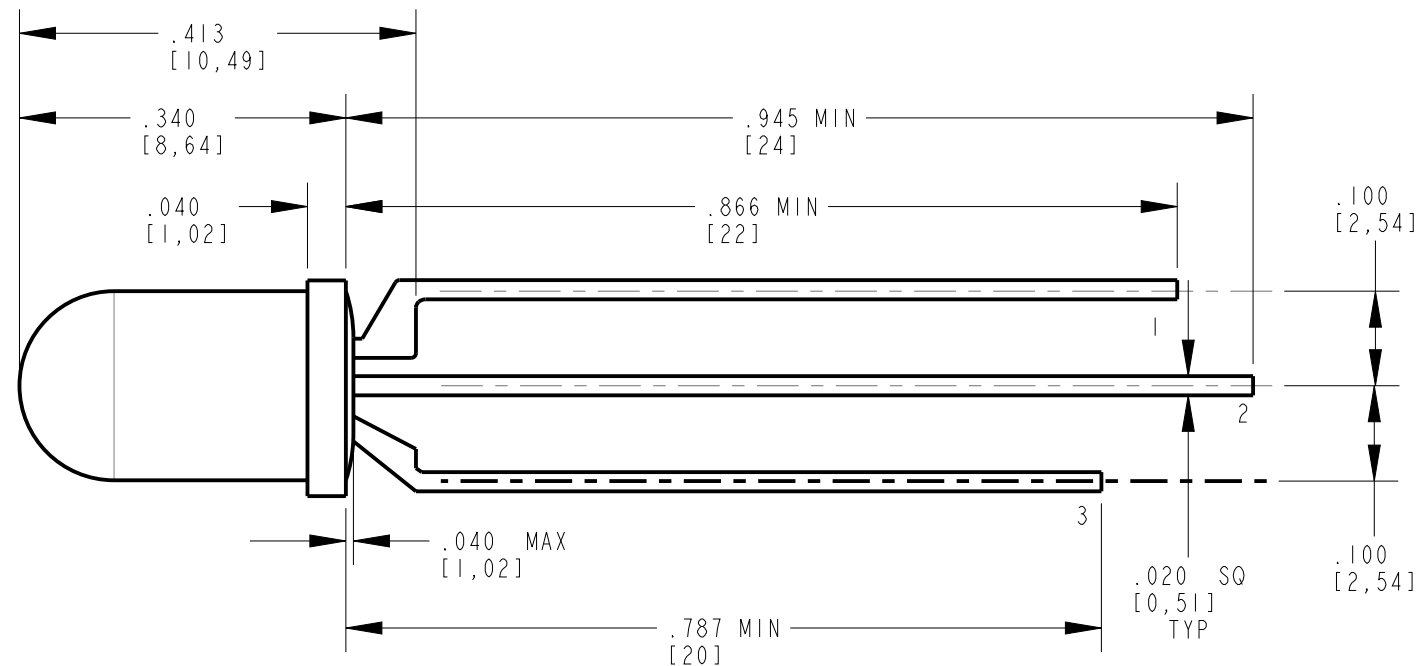
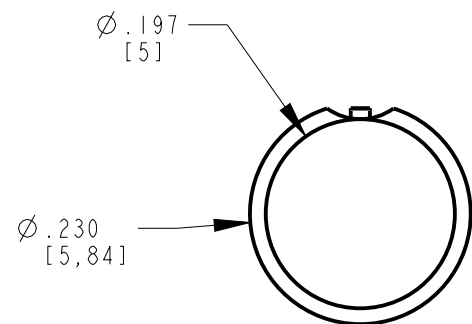


| REV | ECN NO | REVISIONS   | DRN | CKD | APP | DATE   |
|-----|--------|-------------|-----|-----|-----|--------|
| A   | —      | NEW RELEASE | VP  | WFB | NO  | 5-8-15 |



- 1. YELLOW ANODE
- 2. COMMON CATHODE
- 3. GREEN ANODE

**RoHS COMPLIANT 521-8397F**

Part Numbers with the "F" suffix ending are RoHS Compliant. Packaging is marked with "RoHS Compliant" label or equivalent markings. Parts can be wave soldered, dip soldered or hand soldered using typical lead-free soldering process with max 260°C temp. for 5 sec.

| OPERATING CHARACTERISTICS AT 25°C AMBIENT |                      |                          |     |     |   |     |     |  |     |     |                     |
|---|----------------------|--------------------------|-----|-----|---|-----|-----|--|-----|-----|---------------------|
| LED COLOR                                 | PEAK WAVELENGTH (nm) | DOMINANT WAVELENGTH (nm) |     |     | LUMINOUS INTENSITY (mcd) @ I <sub>F</sub> =20mA |     |     | FORWARD VOLTAGE (V) @ I <sub>F</sub> =20mA |     |     | VIEWING ANGLE (DEG) |
|   |                      | MIN                      | TYP | MAX | MIN   | TYP | MAX | MIN  | TYP | MAX |                     |
| YELLOW                                    | 591                  | 586                      | 590 | 593 | 240   | 400 | 680 | 2.1  | 2.4 |     | 30                  |
| GREEN                                     | 565                  | 566                      | 569 | 572 | 120   | 240 | 400 | 2.1  | 2.4 |     | 30                  |

**NOTES:**

1. DIE: AlInGaP (YELLOW/GREEN)
2. LENS COLOR: WHITE DIFFUSED
3. LEAD SPACING MEASURED NEAR EPOXY PACKAGE.
4. TERMINATION FINISH: 60-100 min SILVER (Ag) OVER 30-50 min COPPER (Cu) OVER 10-30 min NICKEL (Ni) OVER 30 min COPPER (Cu) ON MILD STEEL BASE METAL.
5. PIN NUMBERS FOR REFERENCE ONLY, DESIGNATION NON-EXISTENT ON PART.
6. DIALIGHT PART NUMBERS: 521-8397F
7. PACKAGING: BULK
8. LABELING: BAGS TO BE IDENTIFIED WITH DIALIGHT P/N, QTY, DATE CODE, AND INTENSITY AND COLOR BIN CATEGORIES.
9. THIS ASSEMBLY CONTAINS ELECTROSTATIC DISCHARGE SENSITIVE DEVICES (ESDS). MAINTAIN ALL PRECAUTIONARY MEASURES DURING ASSEMBLY, HANDLING, AND STORAGE IN ACCORDANCE WITH IPC-A-610.



**ATTENTION:**  
OBSERVE PRECAUTIONS FOR  
HANDLING ELECTROSTATIC  
SENSITIVE DEVICES

| ABSOLUTE MAXIMUM RATINGS AT 25°C AMBIENT                      |             |       |       |
|---|-------------|-------|-------|
|   | YELLOW      | GREEN | UNITS |
| POWER DISSIPATION   | 75          | 75    | mW    |
| PEAK FORWARD CURRENT (1/10 DUTY CYCLE, 10ms PULSE WIDTH)      | 60          | 60    | mA    |
| CONTINUOUS FORWARD CURRENT                                    | 30          | 30    | mA    |
| LINEAR DERATING FROM 30°C                                     | 0.4         | 0.4   | mA/°C |
| LEAD SOLDERING TEMPERATURE (.079" [2mm] FROM BODY) FOR 5 SEC. | 260         |       | °C    |
| OPERATING TEMPERATURE   | -40 TO +100 |       | °C    |
| STORAGE TEMPERATURE   | -55 TO +100 |       | °C    |

|   |   |               |
|---|---|---------------|
| THIS DRAWING AND THE CONTENTS HEREIN ARE CONFIDENTIAL AND THE SOLE PROPERTY OF DIALIGHT. REPRODUCTION OF THIS DRAWING OR CONSTRUCTION OF ANY PARTS WITHIN THIS DRAWING ARE FORBIDDEN WITHOUT THE WRITTEN CONSENT OF DIALIGHT. |   |               |
| SCALE: 5.000  | DRAWING NUMBER  | REV           |
| ALL DIM'S IN: INCHES (MM)   | C-18177   | A             |
| TOLERANCES: UNLESS OTHERWISE SPECIFIED  | TITLE Ø 5MM Y/G BI-COLOR LED<br>RoHS COMPLIANT        |               |
| FRACTIONS: ±1/64  | MATERIAL  |               |
| DECIMALS (.XX): ±.01  | -   |               |
| DECIMALS (.XXX): ±.010  | -   |               |
| ANGLES: ±1°   | -   |               |
| FINISH:   | -   |               |
| FSCM 83330  | Dialight 1501 ROUTE 34 SOUTH<br>FARMINGDALE, NJ 07727 |               |
| SHEET 1 OF 1  |   | FAMILY TABLE: |