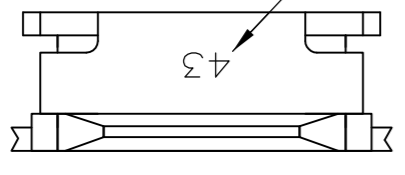


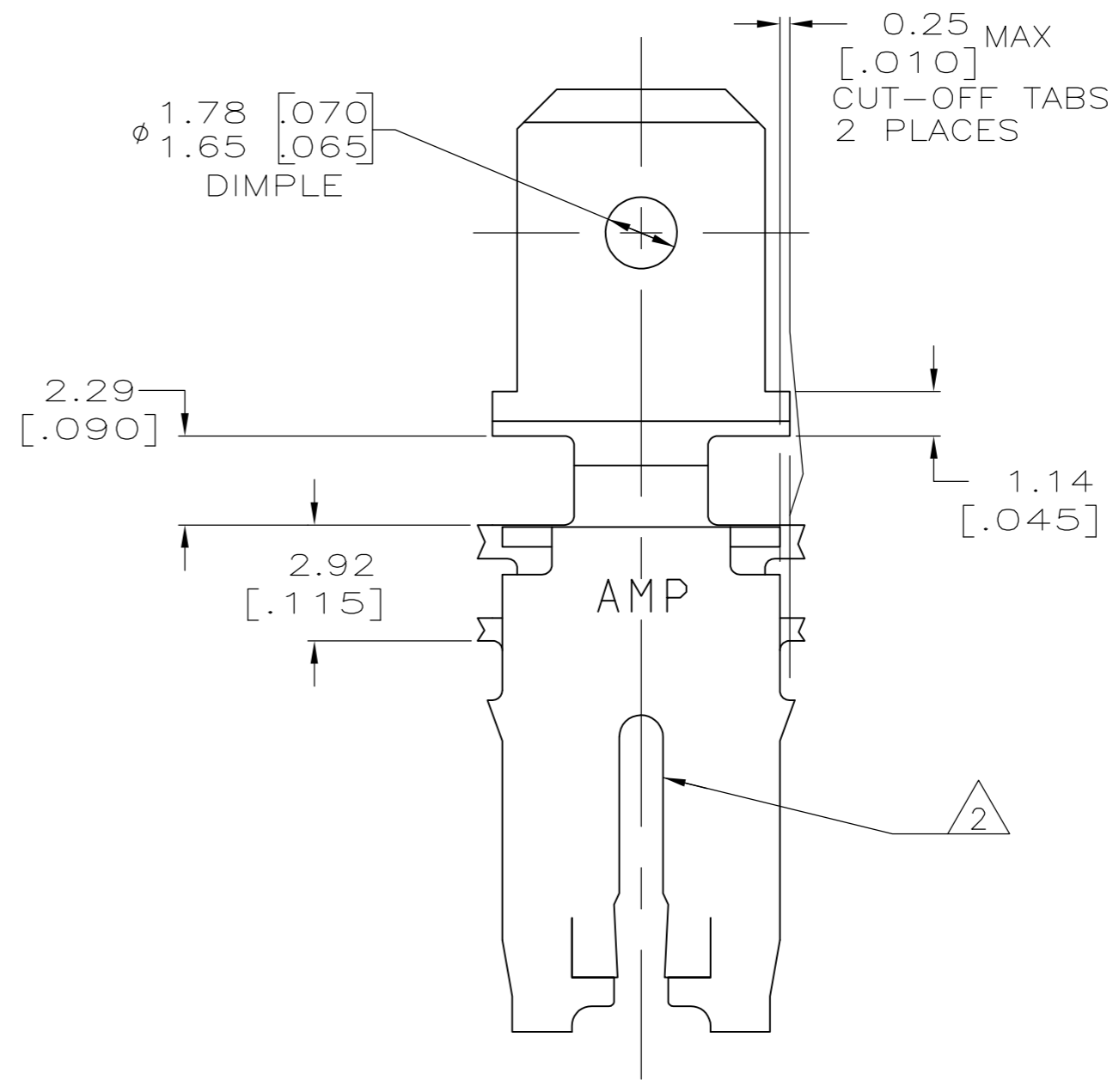
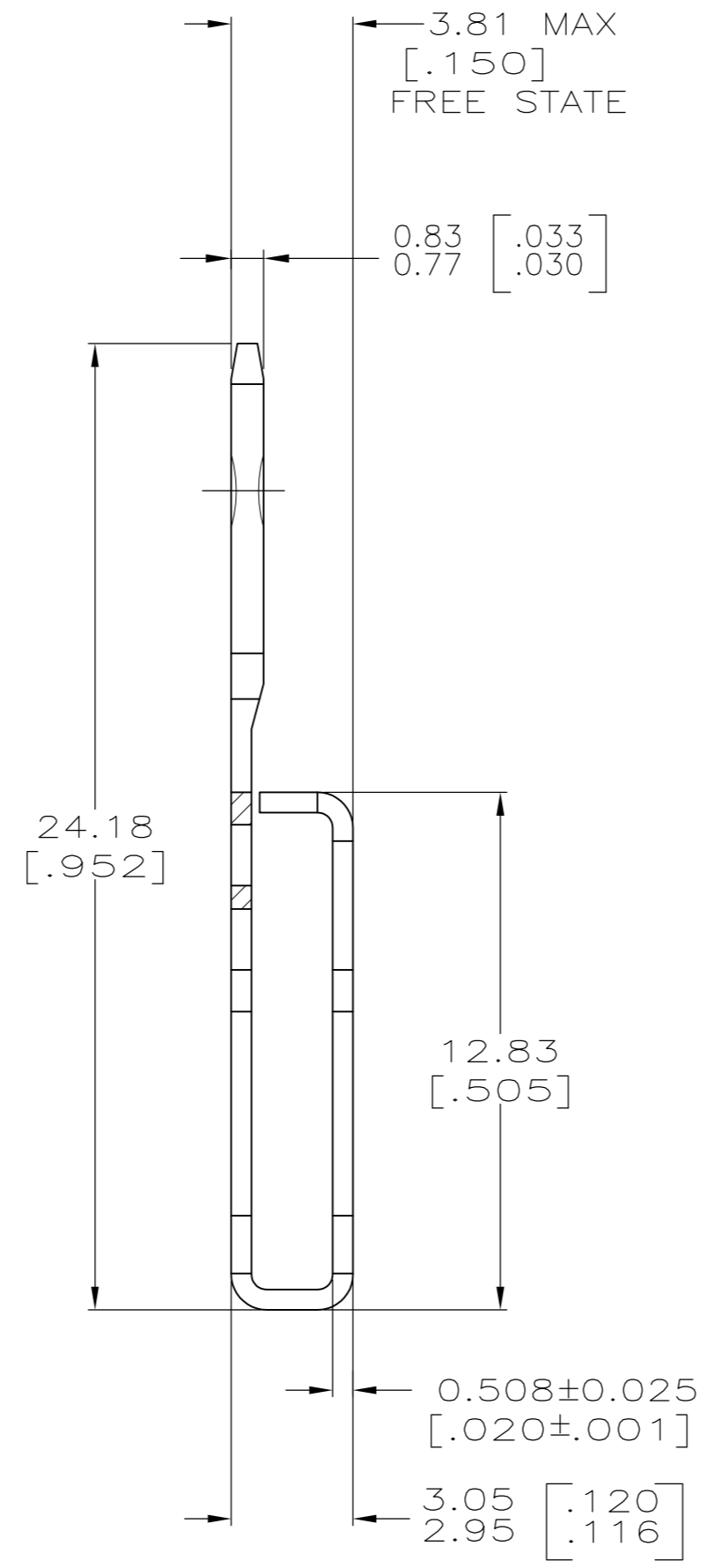
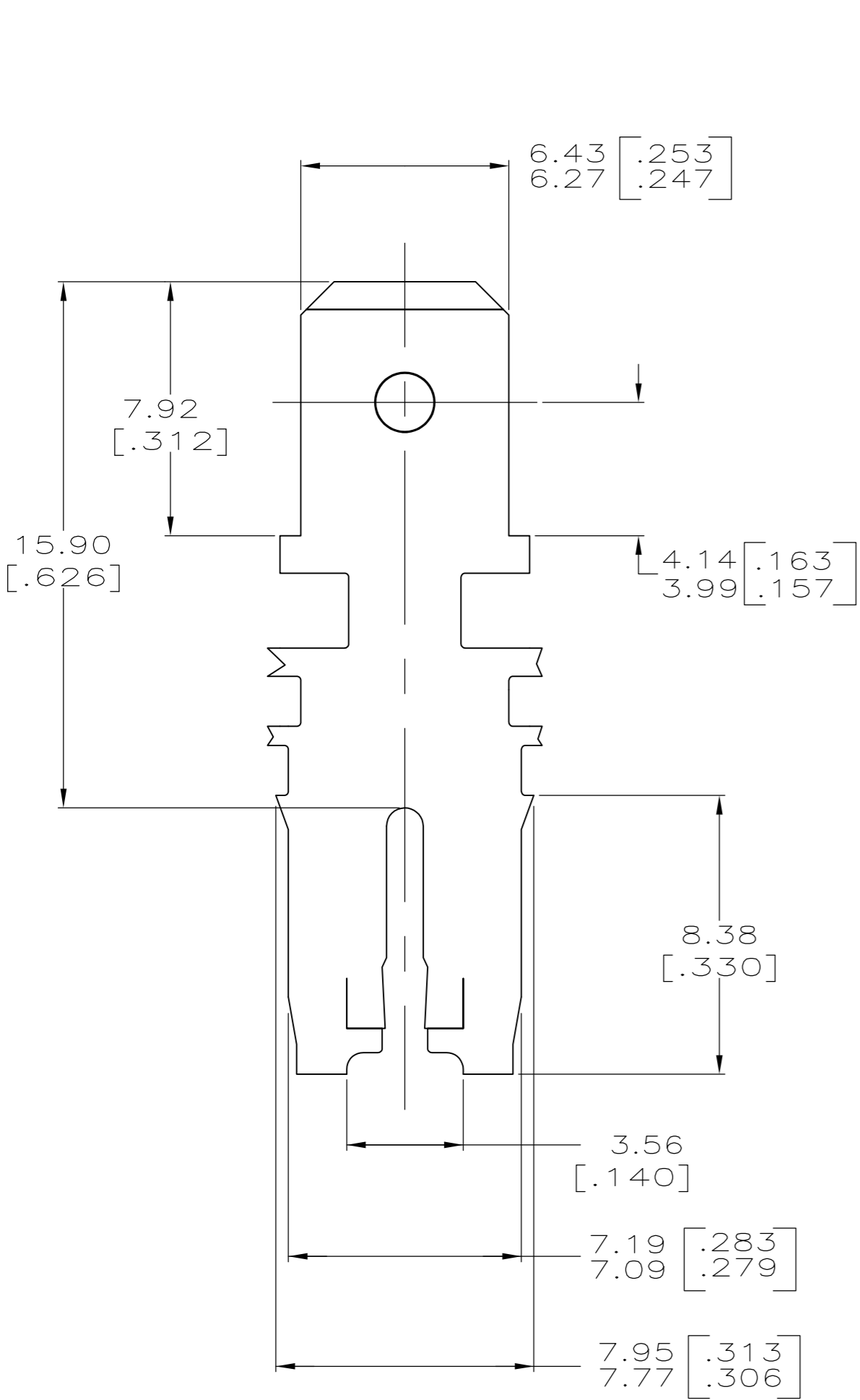
THIS DRAWING IS UNPUBLISHED. RELEASED FOR PUBLICATION
 © COPYRIGHT BY TYCO ELECTRONICS CORPORATION. ALL RIGHTS RESERVED.

LOC	DIST	REVISIONS			
P	LTR	DESCRIPTION	DATE	DWN	APVD
	D	REVISED PER ECR-06-010427	01SEP06	HMR	KR
	E	ECR-13-008483	06AUG13	XJ	DZ

IDENTIFICATION NUMBER 43 FOR MAGNET WIRE RANGE



- 1 CONTINUOUS STRIP ON REELS WITH TERMINALS LOCATED ON 8.38±0.08[.330±.003] CENTERS.
- 2 SLOT ACCEPTS 1.63-1.83mm [#14-#13] AWG COPPER MAGNET WIRE. TWO 1.63mm [#14] AWG COPPER MAGNET WIRES ACCEPTABLE AT CAVITY ANVIL HEIGHT OF 3.94-4.19 [.155-.165].
- 3 AFTER INSERTION INTO PLASTIC HOLDER MAG-MATE MUST BE POTTED-IN TO PREVENT PULL-OUT WHEN MATING RECEPTACLE IS DISCONNECTED.
- 4 TIN PLATE.



63371-1
PART NUMBER

THIS DRAWING IS A CONTROLLED DOCUMENT.		DWN 19MAY1999 MICHAEL S. FEHER	tyco Tyco Electronics Corporation	
DIMENSIONS: mm [INCHES]		CHK 07JUN1999 JEFF R. RUTH	Harrisburg, PA 17105-3608	
TOLERANCES UNLESS OTHERWISE SPECIFIED:		APVD 07JUN1999 KURT A. RANDOLPH	NAME TAB, 6.35[.250] FASTON,™ 500 SERIES MAG-MATE™	
0 PLC ± -	1 PLC ± -	PRODUCT SPEC 108-2053	SIZE A2	CAGE CODE 00779
2 PLC ± 0.25[.010]	3 PLC ± -	APPLICATION SPEC 114-2066	DRAWING NO C=63371	RESTRICTED TO -
4 PLC ± -	ANGLES ± -	WEIGHT -	SCALE 6:1	SHEET 1 OF 1
MATERIAL 082 PRE-MILLED BRASS	FINISH 4	CUSTOMER DRAWING	REV E	