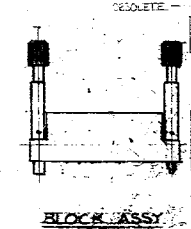
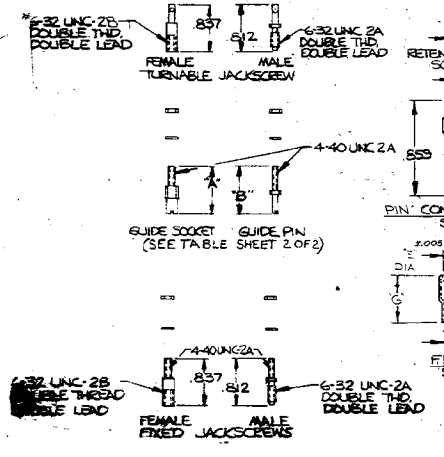
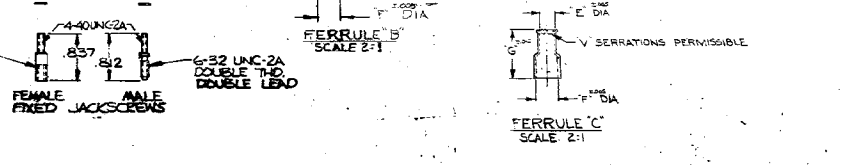
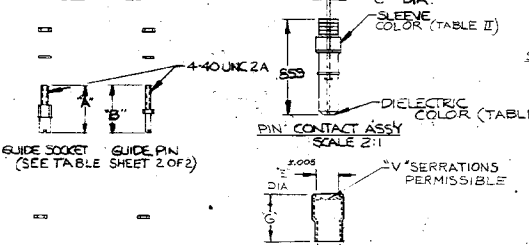
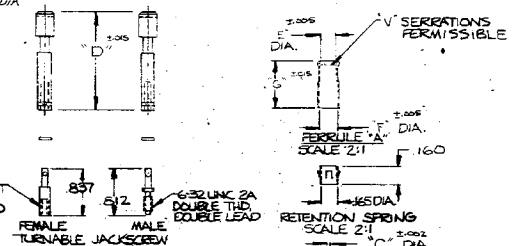
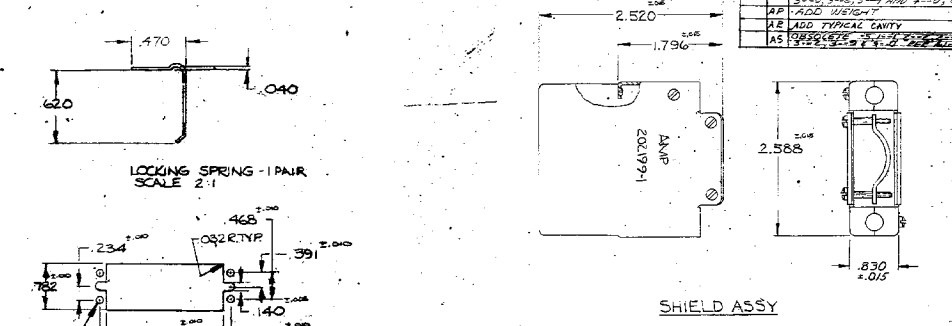
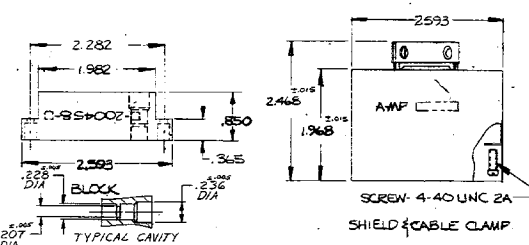
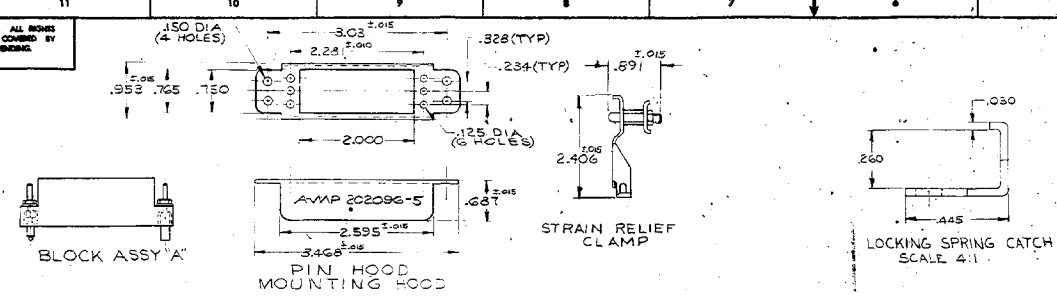


© 1962 BY AMP INCORPORATED. ALL RIGHTS RESERVED. AMP PRODUCTS COVERED BY PATENTS AND/OR PATENTS (PENDING).



CONDUCTOR	SIZE	LENGTH	DIETECTIC COLOR	SLEEVE COLOR	"C"	"B"	"A"	PART NO.
GREEN	.032	.832	.797	4-200458-1				
NATURAL	.023	.832	.797	4-200458-2				
RED	.023	.832	.797	4-200458-3				
NATURAL	.023	.832	.797	4-200458-4				
NATURAL	.023	.832	.797	4-200458-5				
GRAY	.023	.832	.797	4-200458-6				
NATURAL	.023	.832	.797	4-200458-7				
NATURAL	.023	.832	.797	4-200458-8				
ORANGE	.023	.832	.797	4-200458-9				
NATURAL	.023	.832	.797	4-200458-10				
NATURAL	.023	.832	.797	4-200458-11				
NATURAL	.023	.832	.797	4-200458-12				
NATURAL	.023	.832	.797	4-200458-13				
NATURAL	.023	.832	.797	4-200458-14				
NATURAL	.023	.832	.797	4-200458-15				
NATURAL	.023	.832	.797	4-200458-16				
NATURAL	.023	.832	.797	4-200458-17				
NATURAL	.023	.832	.797	4-200458-18				
NATURAL	.023	.832	.797	4-200458-19				
NATURAL	.023	.832	.797	4-200458-20				

**REVISIONS**

REV	DATE	DESCRIPTION
N		REDRAWN & ADDED 2-200458-4, 200458-11, 200458-12
Y		ADDED 2-200458-10, NPS 4-204
Z		ADDED 2-200458-8
Z		ADDED 2-200458-9, NPS 4-204
AA		ADDED 2-200458-7, NPS 4-204
AB		REVISED SHEET 2
AC		REVISED SHEET 2
AD		REVISED SHEET 2
AE		ADDED 4-200458-3, NPS 4-204
AF		ADDED 4-200458-2, NPS 4-204
AG		REVISED SHEET 2
AH		ADDED 4-200458-1, NPS 4-204
AI		REVISED SHEET 2
AJ		REVISED SHEET 2
AK		REVISED SHEET 2
AL		ADDED 4-200458-2, NPS 4-204
AM		ADDED 4-200458-3, NPS 4-204
AN		ADDED 4-200458-4, NPS 4-204
AO		ADDED 4-200458-5, NPS 4-204
AP		ADDED 4-200458-6, NPS 4-204
AQ		ADDED 4-200458-7, NPS 4-204
AR		ADDED 4-200458-8, NPS 4-204
AS		ADDED 4-200458-9, NPS 4-204

**AMPA** AMP INCORPORATED HARRISBURG, PENNSYLVANIA

**MINIATURE COAXIAL CONNECTOR 20 POSITION MALE BLOCK & HARDWARE**

**200458**

SHEET 2

DATE: 4-11-67

REVISED BY: [Signature]

© 1974 BY AMP INCORPORATED. ALL RIGHTS RESERVED. AMP PRODUCTS COVERED BY PATENTS AND/OR PATENTS PENDING.

MATERIAL AND FINISH	DESCRIPTION	PART NO.	QTY REQD.
POLYETHYLENE (MIL-P-22035), NYLON GOLD PL (MIL-G-45204), NICKEL PL (QQ-N-290)	SOCKET CONTACT	201144-5	20
BRASS (QQ-B-626), CAD PL (QQ-P-416)	FIXED JACKSCREW FEMALE	200875-1	1
STAINLESS STEEL (QQ-S-763) PASSIVATED	TURNABLE JACKSCREW MALE	202200-1	1
BRASS (QQ-B-626) SST (QQ-S-763) PASSIVATED	U BOLT	201179-2	1
ALUMINUM (QQ-A-318) CAD PL (QQ-P-416)	PIN HOOD	202390-5	1
COPPER (QQ-C-576) SILVER PL (QQ-S-365)	FERRULE "B"	328663	1
POLYETHYLENE (GENERAL PURPOSE), BRONZE (ASTM B 140), NYLON GOLD PL (MIL-G-45204), NICKEL PL (QQ-N-290)	CONTACT ASSY FEMALE	201144-4	1
NICKEL PL (QQ-N-290)	SOCKET CONTACT ASSY	201146-6	1
POLYETHYLENE (L-P-293)	FERRULE "C"	330587	1
CORNER (QQ-C-576) SILVER PL (QQ-S-365)	LOCKING SPRING	201925-1	1
STAINLESS STEEL (QQ-S-763)	FERRULE "C"	328667	1
COPPER (QQ-C-576) SILVER PL (QQ-S-365)	FERRULE "C"	328667	1
POLYPROPYLENE (GENERAL PURPOSE), BRASS (QQ-B-626), NYLON GOLD PL (MIL-G-45204)	SOCKET CONTACT ASSY	201512-1	1
STAINLESS STEEL (QQ-S-763) PASSIVATED	FIXED JACKSCREW MALE	200874-1	1

WIRE SIZE	QTY REQD.
20	1
22	1
24	1
26	1
28	1
30	1
32	1
34	1
36	1
38	1
40	1
42	1
44	1
46	1
48	1
50	1
52	1
54	1
56	1
58	1
60	1
62	1
64	1
66	1
68	1
70	1
72	1
74	1
76	1
78	1
80	1
82	1
84	1
86	1
88	1
90	1
92	1
94	1
96	1
98	1
100	1

REV	DATE	DESCRIPTION	BY	CHKD	APP'D
1	8-12-70	REVISED	GM		
2	8-12-70	REVISED	GM		
3	8-12-70	REVISED	GM		
4	8-12-70	REVISED	GM		
5	8-12-70	REVISED	GM		
6	8-12-70	REVISED	GM		
7	8-12-70	REVISED	GM		
8	8-12-70	REVISED	GM		
9	8-12-70	REVISED	GM		
10	8-12-70	REVISED	GM		
11	8-12-70	REVISED	GM		
12	8-12-70	REVISED	GM		

REV	DATE	DESCRIPTION	BY	CHKD	APP'D
1	8-12-70	REVISED	GM		
2	8-12-70	REVISED	GM		
3	8-12-70	REVISED	GM		
4	8-12-70	REVISED	GM		
5	8-12-70	REVISED	GM		
6	8-12-70	REVISED	GM		
7	8-12-70	REVISED	GM		
8	8-12-70	REVISED	GM		
9	8-12-70	REVISED	GM		
10	8-12-70	REVISED	GM		
11	8-12-70	REVISED	GM		
12	8-12-70	REVISED	GM		

REV	DATE	DESCRIPTION	BY	CHKD	APP'D
1	8-12-70	REVISED	GM		
2	8-12-70	REVISED	GM		
3	8-12-70	REVISED	GM		
4	8-12-70	REVISED	GM		
5	8-12-70	REVISED	GM		
6	8-12-70	REVISED	GM		
7	8-12-70	REVISED	GM		
8	8-12-70	REVISED	GM		
9	8-12-70	REVISED	GM		
10	8-12-70	REVISED	GM		
11	8-12-70	REVISED	GM		
12	8-12-70	REVISED	GM		

QTY REQD.	PART NO.	DESCRIPTION	MATERIAL & FINISH
20	201144-5	SOCKET CONTACT	POLYETHYLENE (MIL-P-22035), NYLON GOLD PL (MIL-G-45204), NICKEL PL (QQ-N-290)
1	200875-1	FIXED JACKSCREW FEMALE	BRASS (QQ-B-626), CAD PL (QQ-P-416)
1	202200-1	TURNABLE JACKSCREW MALE	STAINLESS STEEL (QQ-S-763) PASSIVATED
1	201179-2	U BOLT	BRASS (QQ-B-626) SST (QQ-S-763) PASSIVATED
1	202390-5	PIN HOOD	ALUMINUM (QQ-A-318) CAD PL (QQ-P-416)
1	328663	FERRULE "B"	COPPER (QQ-C-576) SILVER PL (QQ-S-365)
1	201144-4	CONTACT ASSY FEMALE	POLYETHYLENE (GENERAL PURPOSE), BRONZE (ASTM B 140), NYLON GOLD PL (MIL-G-45204), NICKEL PL (QQ-N-290)
1	201146-6	SOCKET CONTACT ASSY	NICKEL PL (QQ-N-290)
1	330587	FERRULE "C"	POLYETHYLENE (L-P-293)
1	201925-1	LOCKING SPRING	CORNER (QQ-C-576) SILVER PL (QQ-S-365)
1	328667	FERRULE "C"	STAINLESS STEEL (QQ-S-763)
1	328667	FERRULE "C"	COPPER (QQ-C-576) SILVER PL (QQ-S-365)
1	201512-1	SOCKET CONTACT ASSY	POLYPROPYLENE (GENERAL PURPOSE), BRASS (QQ-B-626), NYLON GOLD PL (MIL-G-45204)
1	200874-1	FIXED JACKSCREW MALE	STAINLESS STEEL (QQ-S-763) PASSIVATED
1	202096-5	PIN HOOD	C.E. STEEL (QQ-S-486) CADMIUM PL (QQ-P-416)
1	202199-1	SHIELD ASSY	P.V.C. COLOR: BLACK CARBON STEEL (MIL-S-7952) CADMIUM PL (QQ-P-416) ALUMINUM (QQ-A-318) CADMIUM PL (QQ-P-416) SST (QQ-S-763), PASSIVATED
1	328663	FERRULE "B"	COPPER (QQ-C-576) SILVER PL (QQ-S-365)
1	201841-1	STRAIN RELIEF CLAMP	STAINLESS STEEL (QQ-S-763) PASSIVATED CRS (MIL-S-4174) CADMIUM PL (QQ-P-416) STAINLESS STEEL (QQ-S-763) PASSIVATED P.V.C. COLOR: BLACK
1	2-200458-5	BLOCK ASSY "A"	STAINLESS STEEL (QQ-S-763), PASSIVATED PHENOLIC (MIL-M-14) TYPE 2189-1, ROGERS TYPE 21-82
1	2-200458-3	BLOCK ASSY "B"	STAINLESS STEEL (QQ-S-763) PHENOLIC (MIL-M-14) COLOR: BLACK SST (QQ-S-763) PASSIVATED
1	201390-2	PIN HOOD	ALUMINUM (QQ-A318) CONV COATING (MIL-C-5541)
1	201925-1	LOCKING SPRING	CARBON STEEL (MIL-S-8143) NICKEL PL (QQ-N-290) COPPER FLASH (MIL-C-1552)
1	200835-4	GUIDE SOC CORNER	BRASS (QQ-B-626) CAD PL (QQ-P-416)
1	200833-4	GUIDE PIN CORNER	SST (QQ-S-763) PASSIVATED
1	200875-2	FIXED JACKSCREW FEMALE	STAINLESS STEEL
1	200874-2	FIXED JACKSCREW MALE	STAINLESS STEEL (QQ-S-763) PASSIVATED
1	201145-4	PIN CONTACT ASSY	BRASS (QQ-B-626) GOLD PL (MIL-G-45204) OVER NICKEL PL (QQ-N-290) NYLON (MIL-M-20693) TYPE 1 COLOR: (TABLET) POLYPROPYLENE (GEN. PURPOSE) BRONZE (ASTM B-140) GOLD PL (MIL-G-45204) NICKEL PL (QQ-N-290)
1	201145-2	PIN CONTACT ASSY	BRONZE (ASTM B-140) GOLD PL (MIL-G-45204) NICKEL PL (QQ-N-290)
1	201143-1	PIN CONTACT ASSY	BERYLLIUM COPPER (QQ-C-533) GOLD PL (MIL-G-45204) NICKEL PL (QQ-N-290)
1	200390-2	GUIDE SOC CENTER	STAINLESS STEEL PASSIVATED SST (QQ-S-763) PASSIVATED
1	200389-2	GUIDE PIN CENTER	SST (QQ-S-763) PASSIVATED
1	201142-2	RETENTION SPRING	BERYLLIUM COPPER (QQ-C-533) NICKEL PL (QQ-N-290)
1	328666	FERRULE "A"	COPPER (QQ-C-576) SILVER PL (QQ-S-365)
1	201386-2	SHIELD & CABLE CLAMP	CARBON STEEL (MIL-S-4174) CADMIUM PL (QQ-P-416)
1	201443-1	SHIELD & CABLE CLAMP	STAINLESS STEEL (QQ-S-763) PASSIVATED AL (QQ-A-318) CONV COATING (MIL-C-5541) CRS CAD PL (QQ-P-416)
1	200835-2	GUIDE SOC CORNER	SST (QQ-S-763) PASSIVATED
1	200833-2	GUIDE PIN CORNER	SST (QQ-S-763) PASSIVATED
1	2018-1	TURNABLE JACKSCREW FEMALE	BRASS (QQ-B-626) CADMIUM PL (QQ-P-416)
1	2019-1	TURNABLE JACKSCREW MALE	SST (QQ-S-763) PASSIVATED
1	200458-5	BLOCK	DPH (MIL-M-14) COLOR: GREY-GREEN
1	200458-3	BLOCK	PHENOLIC (MIL-M-14) COLOR: BLACK

© 1974 BY AMP INCORPORATED. ALL RIGHTS RESERVED. AMP PRODUCTS COVERED BY PATENTS AND/OR PATENTS PENDING.