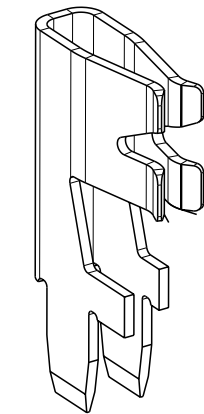
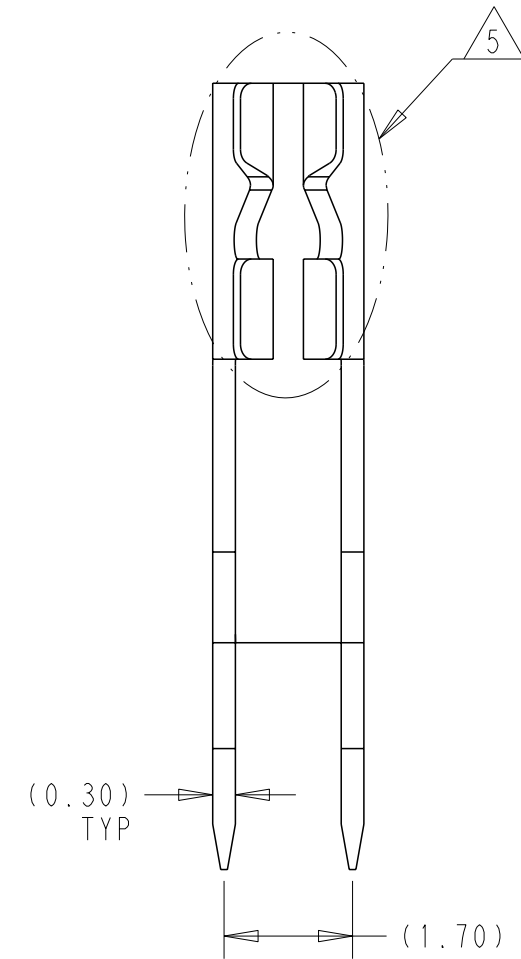
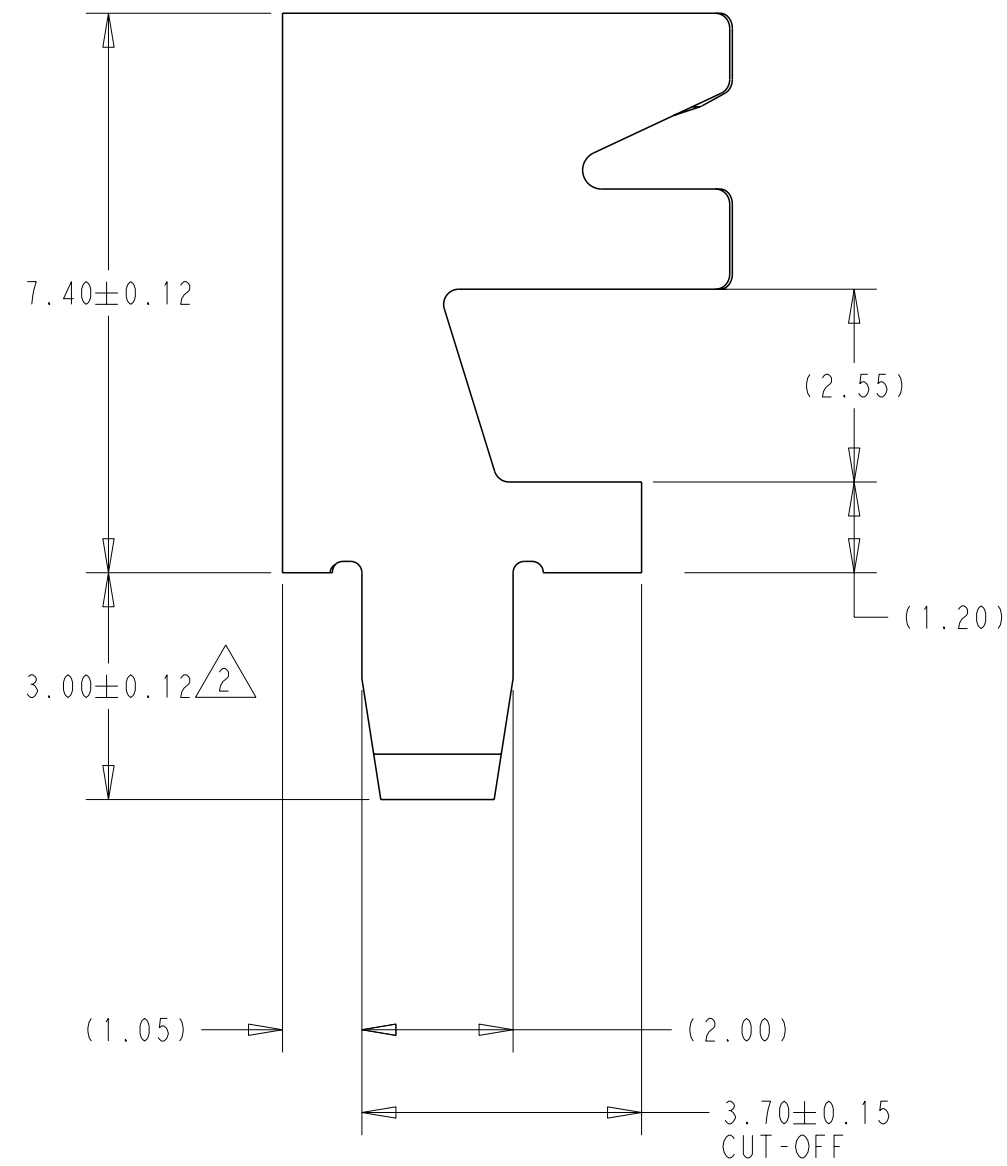


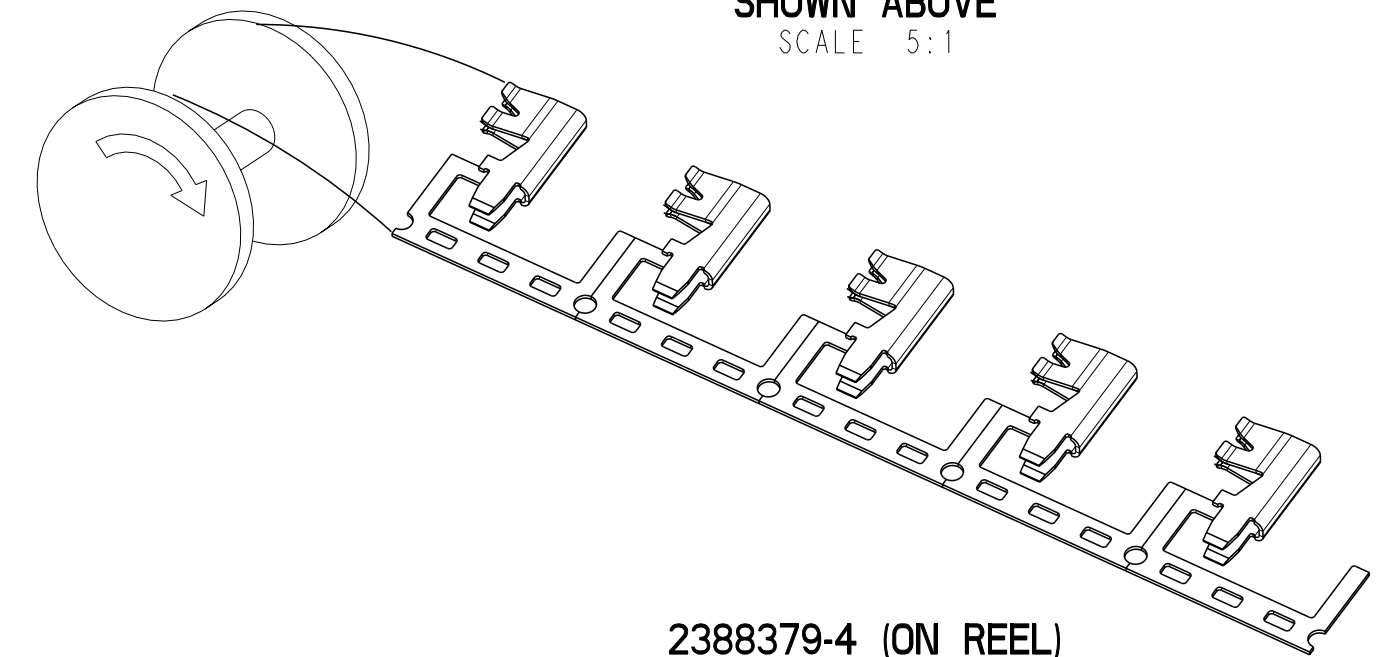
REVISIONS					
P	LTR	DESCRIPTION	DATE	DWN	APVD
B		REVISED PER ECN-23-192478	04JAN2023	BKW	AF
C		REVISED PER ECN-23-197170	06FEB2023	BKW	AF
D		REVISED PER ECN-23-211368	05MAY2023	BKW	AF
E		REVISED PER ECN-23-227018	18AUG2023	BKW	AF

- 1 ALL DIMENSIONS SHOWN ARE REFERENCE UNLESS STATED OTHERWISE.
- 2 SELECTIVE TIN PLATING APPLIED TO ALL SURFACES IN AREA SHOWN.
- 3. DESIGNED TO BE INSERTED DIRECTLY INTO A PCB WITH AN INTERFERENCE FIT BETWEEN THE TERMINALS SOLDER LEGS AND THE RECOMMENDED PCB SLOT LAYOUT.
- 4 PROPER TERMINAL SPACING CAN VARY DUE TO MANY FACTORS. TO VERIFY PROPER SPACING FOR YOUR APPLICATION PLEASE CONTACT TE PRODUCT ENGINEERING FOR COMPLETE ANALYSIS.
- 5 PART IS LUBRICATED, AND LUBRICANT MAY BE PRESENT ON ENTIRE PART SURFACE. AVOID CONTACT WITH TERMINAL CONTACT ZONE DURING HANDLING TO AVOID REMOVING LUBRICANT FROM PART IN THIS AREA.
- 6 THIS PRODUCT HAS NOT COMPLETED QUALIFICATION TESTING

RECOMMENDED PCB LAYOUT
SCALE 10:1



2388379-5 (LOOSE PIECE)
SHOWN ABOVE
SCALE 5:1



2388379-4 (ON REEL)
SHOWN ABOVE
SCALE 2:1

LOOSE PIECED	NICKEL W/ SELECTIVE Sn	COPPER ALLOY	2388379-5
ON REEL	NICKEL W/ SELECTIVE Sn	COPPER ALLOY	2388379-4
CONFIGURATION	PLATING	MATERIAL	PART NUMBER

THIS DRAWING IS A CONTROLLED DOCUMENT.

DIMENSIONS:	TOLERANCES UNLESS OTHERWISE SPECIFIED:
mm	
	0 PLC ± 1
	1 PLC ± 2
	2 PLC ± 3
	3 PLC ± 4
	4 PLC ±
	ANGLES ±
	FINISH ±
MATERIAL	SEE TABLE
	SEE TABLE

DWN	28 JAN 2021	 TE Connectivity	NAME RECEPTACLE TERMINAL, PCB, BATTERY CONNECTOR		
CHK	28 JAN 2021				
APVD	28 JAN 2021				
PRODUCT SPEC	108-160280				
APPLICATION SPEC	114-160168	SIZE	CAGE CODE	DRAWING NO	RESTRICTED TO
WEIGHT	-	A2	00779	C-2388379	-
CUSTOMER DRAWING	SCALE 10:1	SHEET 1 OF 1	REV E		

printed on 18 Aug 2023 09:08 (Eastern Standard Time) from US075751