

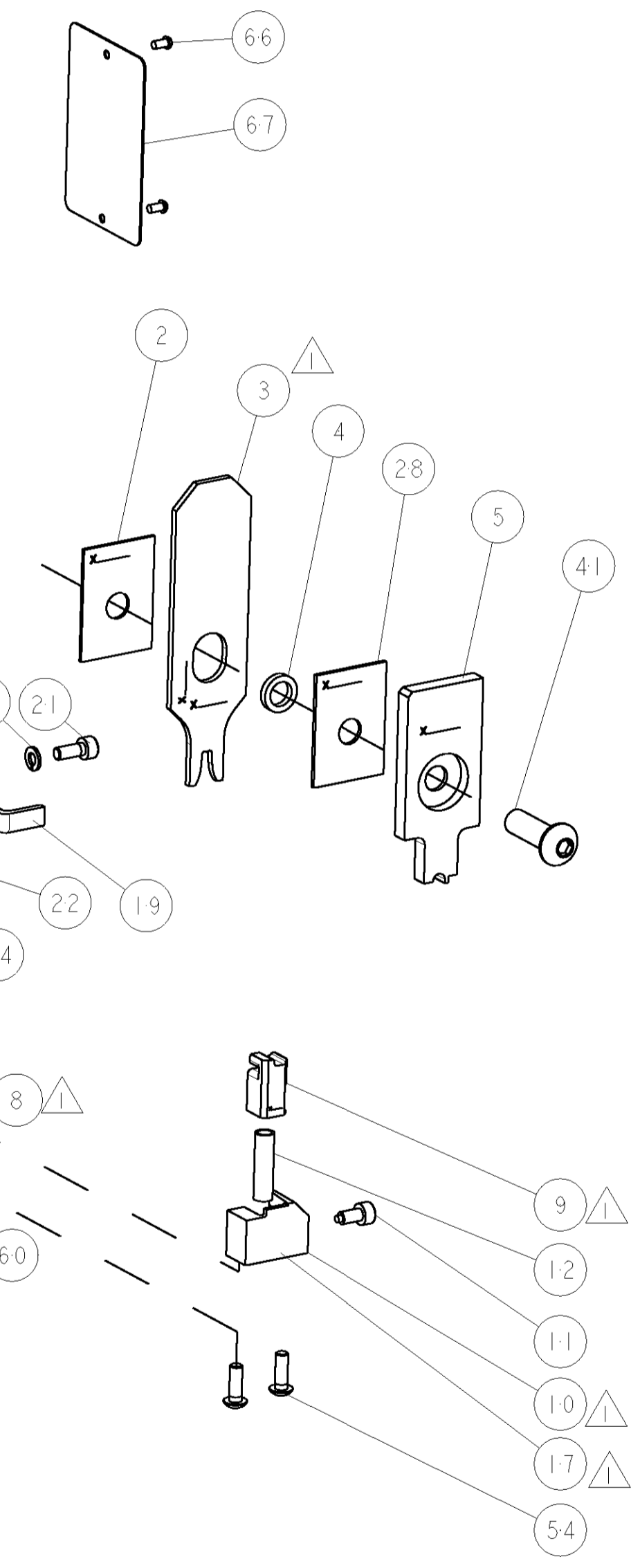
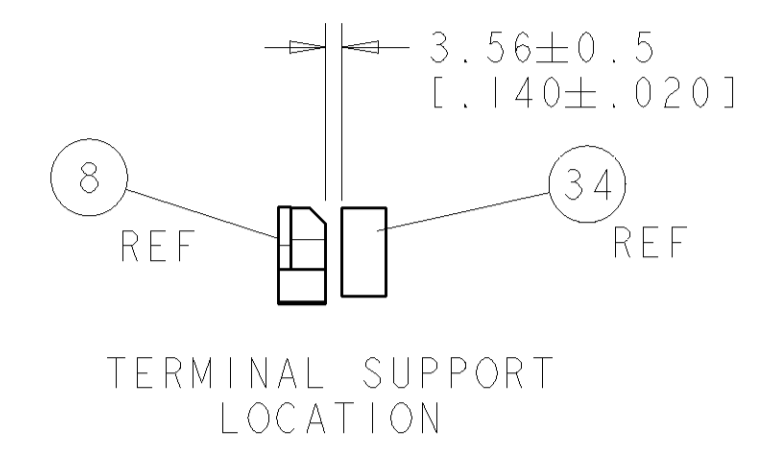
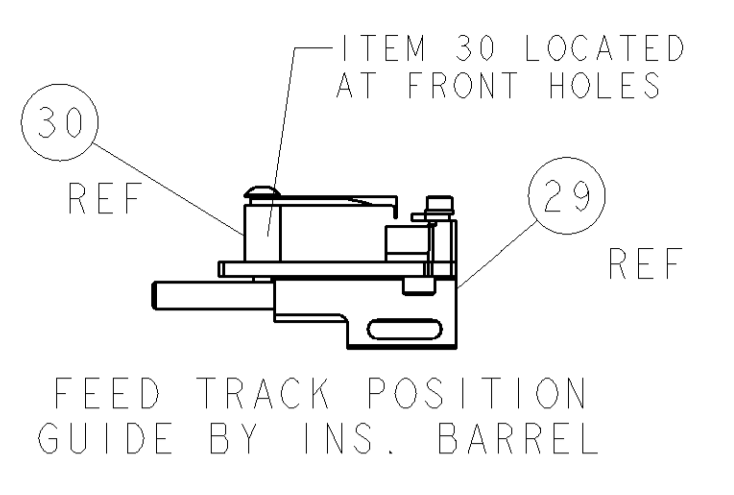
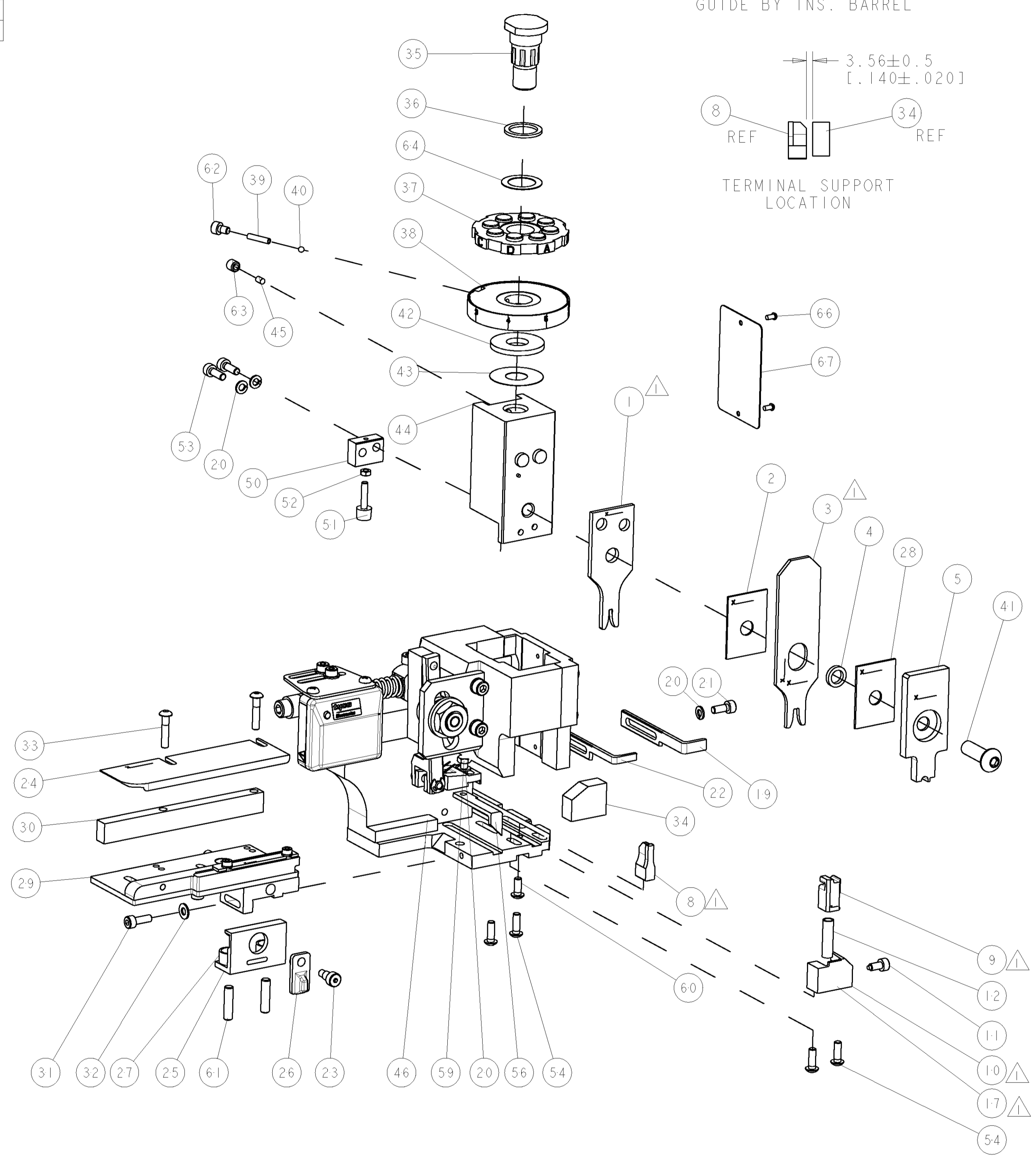
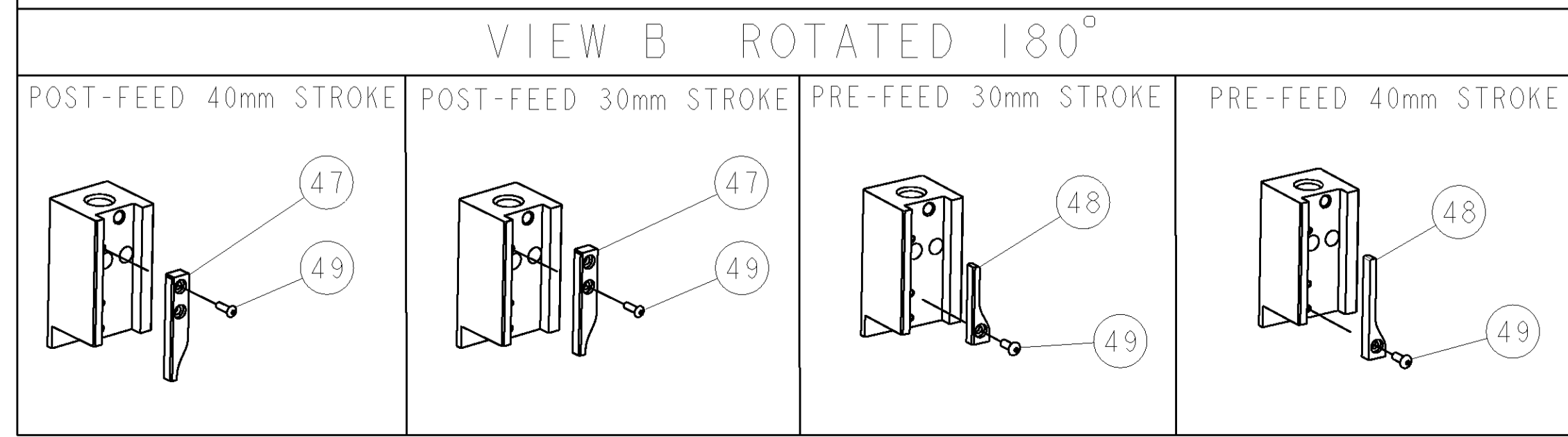
PART NUMBER	REV	TERMINATOR	FEED TYPE	DESCRIPTION
1426571-1	B	LEADMAKER	MECH POST FEED	CUTS CARRIER
1426571-2	B	BENCH	MECH PRE FEED	CUTS CARRIER
1426571-6	B	LEADMAKER	MECH POST FEED	CONTINUOUS CARRIER
7-1426571-1	B	LEADMAKER	MECH POST FEED	-1 AND SPARE PARTS
7-1426571-2	B	BENCH	MECH PRE FEED	-2 AND SPARE PARTS
7-1426571-6	B	LEADMAKER	MECH POST FEED	-6 AND SPARE PARTS
7-1426571-7	A	-	-	SPARE PARTS KIT

CRIMP	SIZE	TYPE	RANGE
WIRE	2.03 [1.080 IN]	F	0.50-1.50mm ²
INSUL	3.81 [1.50 IN]	F	1.50-2.10 [1.059-1.083 IN]
WIRE STRIP LENGTH	3.96-4.75 [1.56-1.87 IN]		APPL INSTRUCTIONS 408-8322
TERMINAL APPL SPEC	NONE		FEED 14.00 [1.51 IN]

TYCO PN	MANUF PN		
1572867-1	4303.00	-	-
1572867-2	4303.01	-	-

WIRE SIZE	CRIMP HEIGHT	PINPN & LENGTH [IN]
1.50 mm ²	1.60 ±0.05 [1.063 ±.002 IN]	9-354778-8 [1.2985]
1.00 mm ²	1.39 ±0.05 [1.055 ±.002 IN]	1-354779-6 [1.3070]
0.75 mm ²	1.28 ±0.05 [1.050 ±.002 IN]	2-354779-7 [1.3125]
0.50 mm ²	1.18 ±0.05 [1.046 ±.002 IN]	3-354779-6 [1.3170]

- △ RECOMMENDED SPARE PARTS.
- 2. GREASE RAM, CAM, CAM FOLLOWER AND FEED ROD LIGHTLY.
- 3. LUBRICATE DAILY PER THE APPLICATOR INSTRUCTION SHEET SUPPLIED WITH THE APPLICATOR.
- △ ALL CRIMP DATA CALCULATED BY TYCO ELECTRONICS UK LTD. 1.50mm² DOES NOT MEET TENSILE VALUES TO TYCO STANDARDS. 0.5mm² & 1.50mm² WIRE SIZES ARE NOT RECOMMENDED FOR USE BY TYCO ELECTRONICS UK LTD.



SET UP GAGE 458637-3		LOC	DIST	REVISIONS			
A	66			REV	DATE	BY	APPD
				B	05JUN2006	RK	GB

REV	DATE	DESCRIPTION	BY	APPD
73				
72				
71	1338705-1	DOCUMENTATION PACKAGE		
70				
69				
68				
67	461264-1	PLATE, IDENTIFICATION		
66	21017-2	SCREW, DRIVE		
65				
64	986950-1	WASHER, FLAT PRECISION		
63	3-18031-0	SCR, SET, CUP POINT M6 X 6.0		
62	18023-9	SCR, SKT HD CAP M4 X 6.0		
61	2-18032-5	SCR, SET, FLT POINT M5 X 20.0		
60	18024-7	SCR, BTN SKT HD CAP (M4 X 10.0)		
59	5-18022-2	SCR, HEX HD CAP M4 X 8.0		
58				
57				
56	1338685-1	PAWL, FEED		
55				
54	18024-8	SCR, BTN SKT HD CAP (M4 X 12.0)		
53	1-18023-2	SCR, SKT HD CAP M4 X 12.0		
52	18030-1	NUT, HEX, REG M3		
51	811242-5	BUMPER, HOLD DOWN		
50	690753-2	SPACER, TONKER		
49	18024-3	SCR, BTN SKT HD CAP (M3 X 10.0)		
48	1338675-1	CAM, UNIVERSAL PRE FEED		
47	1338676-1	CAM, UNIVERSAL POST-FEED		
46	1320999-3	APPLICATOR SUBASSEMBLY, HDI		
45	690191-1	PLUG, NYLON		
44	1338660-1	RAM		
43	690125-1	SHIM SUB-ASSY		
42	690124-1	WASHER, RAM (.115)		
41	2-18024-6	SCR, BTN SKT HD CAP (M8 X 25.0)		
40	23241-1	BALL, STEEL		
39	2-22278-7	SPRING, COMPRESSION		
38	1320922-1	DISC, ADJUST, INSULATION CRIMP		
37	354777-1	WIRE DISC, ASSEMBLY		
36	22480-5	SPRING, COMPRESSION		
35	690212-1	POST, RAM		
34	1320934-1	SUPPORT, TERMINAL		
33	1-18024-0	SCR, BTN SKT HD CAP (M4 X 20.0)		
32	18027-2	WASHER, FLAT, REG M4		
31	1-18023-2	SCR, SKT HD CAP M4 X 12.0		
30	1-1320908-5	SPACER, STRIP GUIDE		
29	1633073-1	STRIP GUIDE ASSEMBLY		
28	1-455888-0	SPACER, CRIMPER		
27	1-22284-0	SPRING, COMPRESSION		
26	356835-1	LEVER, DRAG RELEASE		
25	240792-1	DRAG, TERMINAL		
24	1320928-1	PLATE, STRIP GUIDE		
23	980371-4	SCR, SKT HD SHLDR 5.0 DIA X 6.0		
22	690472-2	STRIPPER		
21	1-18023-1	SCR, SKT HD CAP M4 X 10.0		
20	18025-2	WASHER, SPRG LOCK, REG M4		
19	690472-1	STRIPPER		
18				
17	1338684-1	SHEAR HOLDER, FRONT		
16				
15				
14				
13				
12	3-22280-3	SPRING, COMPRESSION		
11	356885-4	STOP, SHEAR		
10	1320921-1	SHEAR HOLDER, FRONT, CUT		
9	1-454276-9	FLOATING SHEAR, FRONT		
8	1633139-7	ANVIL, COMBINATION		
7				
6				
5	1-455889-4	DEPRESSOR, SHEAR		
4	1-238011-0	BLOCK, CRIMPER SPACER		
3	1-683453-8	CRIMPER, INSULATION PREMIUM		
2	455888-8	SPACER, CRIMPER		
1	1-456405-6	CRIMPER, WIRE PREMIUM		

REV	DATE	DESCRIPTION	BY	APPD
84				
83				
82				
81				
80				
79				
78				
77				
76				
75				
74				

REV	DATE	DESCRIPTION	BY	APPD					
-77	-76	-72	-71	-6	-2	-1	PART NO	DESCRIPTION	ITEM NO

REV	DATE	DESCRIPTION	BY	APPD
05-Jun-06				
05-Jun-06				

TYCO ELECTRONICS	DESCRIPTION	DATE	BY	APPD
tyco	Side Feed HDI Applicator	05-Jun-06		

REV	DATE	DESCRIPTION	BY	APPD
05-Jun-06				

REV	DATE	DESCRIPTION	BY	APPD
05-Jun-06				

REV	DATE	DESCRIPTION	BY	APPD
05-Jun-06				

REV	DATE	DESCRIPTION	BY	APPD
05-Jun-06				

REV	DATE	DESCRIPTION	BY	APPD
05-Jun-06				

REV	DATE	DESCRIPTION	BY	APPD
05-Jun-06				