



Tools for
Advancing
Innovation

360
Rotation

Inspection
From All
Angles

HDMI, USB
and SD Card
Outputs

Capture & Save
Images Directly
To SD Card

Gooseneck
LED Task
Light

Shadow Free
Illumination

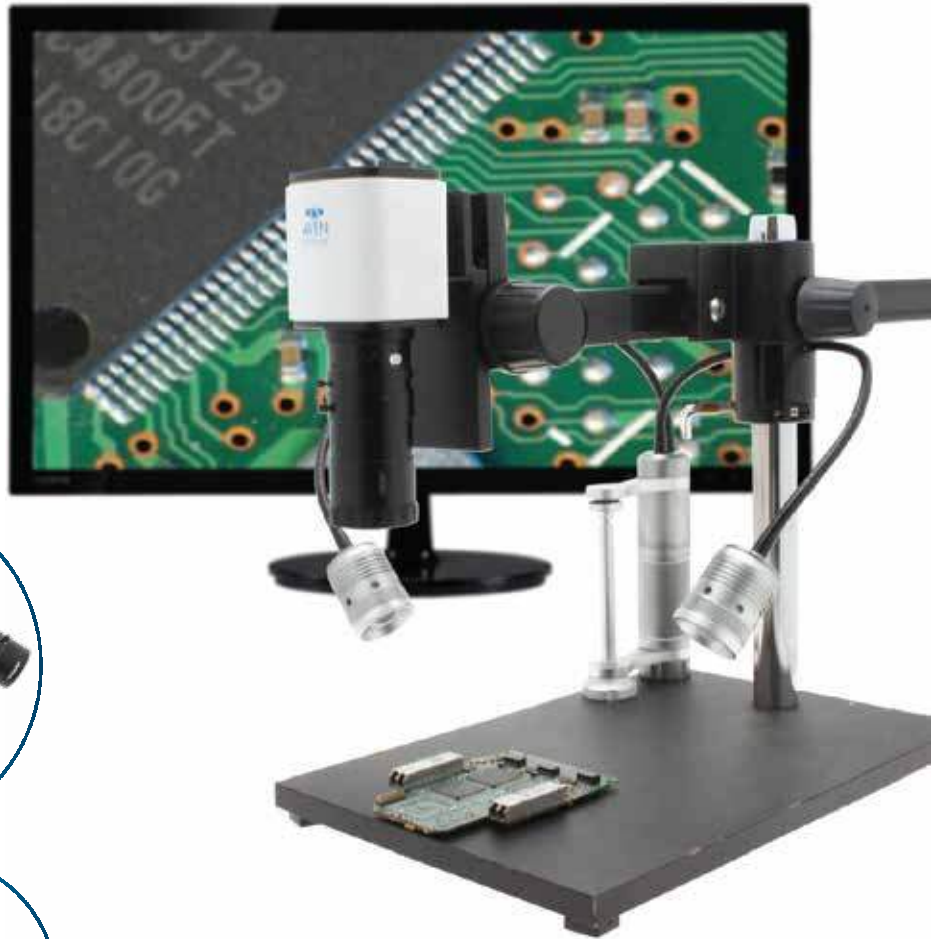
High
Magnification

7x-70x

Mighty Cam Pro

Auto Focus HDMI/USB
W/ Macro Lens, Ultra-Glide Stand,
LED Task Light and 22" Monitor

High definition 1080P auto focus inspection system with a 22" monitor offering superb image quality at 60 frames per second. Working distance 6" with magnification range of 7x-70x. You can operate this system with or without a PC. Without a PC camera connects directly to the included HDMI monitor. View and record images and perform measurements using the included on screen tools. Images & videos can be saved to the included SD card. Connect the camera to a PC to utilize more advance features in the included software. The included dual gooseneck LED light allows you to illuminate the object to get the sharpest and greatest detail.



Features:

- Includes software Mosaic 2.1
- HDMI, USB2.0 and SD card outlets
- Data transfer up to 60 frames per second
- Heavy metal base provides excellent stability
- Ball Joint provides 360 degree rotation
- Save images directly to SD card *no computer required*
- Smooth gliding arm allows to move easily across object being viewed
- Fast auto focus camera achieves instant clear images with no need to adjust the lens
- Camera features HDMI and USB outputs
- Inspect directly on an HD monitor or from a computer
- Advanced imaging/measurement software included
- 7x - 70x magnification at a 6 inch working distance
- Includes Aven's Dual Gooseneck LED Task Light, 22" HD monitor

Mighty Cam Pro Camera with Macro Lens, Ultra-Glide Stand and LED Task Light	
Item Number	258-181-556-PRO
Magnification	7x -70x (at 6in working distance)
Resolution	2MP 1920x1080
Frame Rate	60 fps @HDMI, 30fps @USB2.0
Video Recording	30fps @SD Card, 30 fps @PC
Outputs	HDMI, USB2.0 and SD Card
PC Software	Mosaic 2.1
Package Contents	Mighty Cam Pro USB/HDMI AutoFocus Dual Gooseneck LED task Light, Computer Macro Lens, 22" HD Monitor, Ultra-Glide Arm Stand



Tools for
Advancing
Innovation



Included Software
Mosaic 2.1

HDMI, USB and SD Card Outputs
Capture & Save Images Directly To SD Card

Auto Focus
Full HD 1080p

60fps HDMI
30fps SD Card, PC and USB

Mighty Cam Pro

Auto Focus HDMI/USB/SD

Aven's Mighty Cam Pro is an all-in-one inspection auto-focus camera. This camera offers both USB and HDMI outputs for inspection from an HD monitor or your PC via the included Mosaic software. This camera features integrated measurement capabilities for measuring without a PC. This camera also features a built-in SD card port for capturing instant high resolution images with no need for a PC.



Integrated Measurement System *No PC Required*



Built in on screen tools provide powerful measurement functions including freehand line, rectangle, polygon, circle, bicircle, angle, point-line distance and much more. Three different length units of millimeter, centimeter and micrometer are provided to meet various measurement requirements in different applications. Simple calibration tool is also included.

Mosaic Software Included

Compatible with Mosaic V2.1 Computational Imaging Software. Fast, efficient and worry-free is the core design concept of Mosaic V2.1 software. It adopts a new image "shooting-processing-measurement-reporting" function, modular design, and integrates various intelligent image processing algorithms. It is dedicated to providing users with more simple operation modes and improve work efficiency in all circumstances.

Real-Time Image Stitching

It can generate large-sized mosaic images in a few seconds while moving the stage, which is light, smooth and worry-free! Real-time depth-of-field fusion.

Perfect Color Reproduction

Aven's color processing is capable of a new level of precision, matches the monitor image to the eyepiece view, produces extremely-high color definition.

Macro Lens



Macro Lens



Micro Lens



Micro Lens

