

## Router - TC MGUARD RS4000 3G VPN - 2903440

Please be informed that the data shown in this PDF Document is generated from our Online Catalog. Please find the complete data in the user's documentation. Our General Terms of Use for Downloads are valid (<http://phoenixcontact.com/download>)



Security device, WAN, and mobile phone interface. SD card slot. 10 VPN tunnels, intelligent firewall with full scope of functions, router with NAT/1:1 NAT, optional CIFS integrity monitoring. 4-port managed switch. 2 SIM card slots. GPS receiver.

### Product Features

- Maximum security
- Maximum performance
- Central management tool



### Key Commercial Data

Packing unit	1 pc
Weight per Piece (excluding packing)	1000.0 g
Custom tariff number	85176200
Country of origin	Germany

### Technical data

#### Note

Utilization restriction	EMC: class A product, see manufacturer's declaration in the download area
-------------------------	---

#### Dimensions

Width	45 mm
Height	130 mm
Depth	114 mm

#### Ambient conditions

Ambient temperature (operation)	-40 °C ... 60 °C
Ambient temperature (storage/transport)	-40 °C ... 70 °C
Permissible humidity (operation)	5 % ... 95 % (non-condensing)

# Router - TC MGUARD RS4000 3G VPN - 2903440

## Technical data

### Ambient conditions

Altitude	5000 m (For restrictions see manufacturer's declaration)
Degree of protection	IP20

### General

Electrical isolation	VCC // PE
Test voltage data interface/data interface	1 kV (50 Hz, 1 min.)
Test voltage data interface/power supply	1 kV (50 Hz, 1 min.)
Electromagnetic compatibility	Conformance with EMC Directive 2004/108/EC
Net weight	950 g
Housing material	Metal
Color	silver
MTTF	567 Years (Telcordia standard, 25°C temperature, 21% operating cycle (5 days a week, 8 hours a day))
	269 Years (Telcordia standard, 40°C temperature, 34.25% operating cycle (5 days a week, 12 hours a day))
	114 Years (Telcordia standard, temperature 40 °C, operating cycle 100 % (7 days a week, 24 hours a day))
Pollution degree	2
Conformance	CE-compliant
UL, USA	Class I, Zone 2, AEx nA IIC T4
UL, USA / Canada	Class I, Div. 2, Groups A, B, C, D
UL, Canada	Class I, Zone 2, Ex nA IIC T4 Gc X

### Power supply

Supply voltage range	11 V DC ... 36 V DC (via pluggable COMBICON screw terminal block)
Max. current consumption	< 800 mA (at 11 V DC (incl. 3 x 50 mA for the outputs))
Typical current consumption	< 200 mA (24 V DC)
	< 90 mA (stand by)
Conductor cross section solid max.	2.50 mm <sup>2</sup>
Conductor cross section solid min.	0.20 mm <sup>2</sup>
Max. AWG conductor cross section, flexible	14
Min. AWG conductor cross section, flexible	24

### Serial interface

Interface 1	Ethernet interface, 10/100BASE-T(X) in acc. with IEEE 802.3u
Interface	Ethernet
Connection method	RJ45
Transmission length	100 m (shielded twisted pair)
Protocols supported	TCP/IP, UDP/IP, FTP, HTTP
Auxiliary protocols	ARP, DHCP, PING (ICMP), SNMP V1, SMTP

# Router - TC MGUARD RS4000 3G VPN - 2903440

## Technical data

### Serial interface

Basic functions	Router with intelligent firewall and VPN for 10 tunnels (up to 250 supported with optional additional license), CIFS Integrity Monitoring (as an option), metal housing, slot for SD memory card
Interface 2	V.24 (RS-232) interface in acc. with ITU-T V.28, EIA/TIA-232, DIN 66259-1
Interface	RS-232
Connection method	D-SUB-9 plug
File format/coding	UART/NRZ: 7/8 Bit Data, 1/2 Bit Stopp, None/Even/Odd Parity
Transmission length	15 m
Data flow control/protocols	Software handshake, Xon/Xoff or hardware handshake RTS/CTS
Serial transmission speed	9.6; 19.2; 38.4; 57.6; 115.2 kbps

### Radio interface

Interface description	GSM / GPRS / EDGE / UMTS / CDMA2000
Frequency	850 MHz (2 W (EGSM))
	900 MHz (2 W (EGSM))
	1800 MHz (1 W (EGSM))
	1900 MHz (1 W (EGSM))
	800 MHz (0.25 W (UMTS))
	850 MHz (0.25 W (UMTS))
	900 MHz (0.25 W (UMTS))
	1900 MHz (0.25 W (UMTS))
	2100 MHz (0.25 W (UMTS))
	800 MHz (CDMA2000 EV-DO)
	1900 MHz (CDMA2000 EV-DO)
Data rate	≤ 14.4 Mbps (HSDPA)
	≤ 5.7 Mbps (HSUPA)
	≤ 3.1 Mbps (DL CDMA2000)
	≤ 1.8 Mbps (UL CDMA2000)
Antenna	50 Ω impedance SMA antenna socket
SIM interface 1	1.8 volt, 3 volt
SIM interface 2	1.8 volt, 3 volt
GPRS	Class 12, Class B
	CS1 ... CS4
EDGE	Multislot Class 12
UMTS	HSPA 3GPP R6
Network function	4 time slots for receiving data, 4 time slots for transmitting data. The PIN is saved in the modem. After a voltage interruption, there is automatic redialing into the network. Integrated TCP/IP stack, firewall and VPN support, independent connection establishment.

# Router - TC MGUARD RS4000 3G VPN - 2903440

## Technical data

### Radio interface

Network check	LED bar graph to display receive quality
Protocols supported	GPS (Global Positioning System), GLONASS

### Function

Management	Web-based management, SNMP
------------	----------------------------

### Digital outputs

Output name	Digital output
Number of outputs	3
Voltage output signal	10 V DC ... 30 V DC (depending on the operating voltage)
Current output signal	≤ 250 mA (Short-circuit-proof)

### Digital inputs

Description of the input	Digital input
Number of inputs	3
Voltage input signal	10 V DC ... 30 V DC
Current input signal	5 mA

## Classifications

### eCl@ss

eCl@ss 4.0	27230207
eCl@ss 4.1	27230207
eCl@ss 5.0	27230207
eCl@ss 5.1	27230207
eCl@ss 6.0	27230207
eCl@ss 7.0	27230207
eCl@ss 8.0	19170103

### ETIM

ETIM 3.0	EC000310
ETIM 4.0	EC000740
ETIM 5.0	EC001478

### UNSPSC

UNSPSC 6.01	30211506
UNSPSC 7.0901	39121008
UNSPSC 11	39121008
UNSPSC 12.01	39121008

# Router - TC MGuard RS4000 3G VPN - 2903440

## Classifications

### UNSPSC

UNSPSC 13.2	39121008
-------------	----------

## Approvals

### Approvals

---

#### Approvals

UL Listed / cUL Listed / cULus Listed

---

#### Ex Approvals

UL Listed / cUL Listed / cULus Listed

---


Approvals submitted

---

## Approval details

UL Listed 

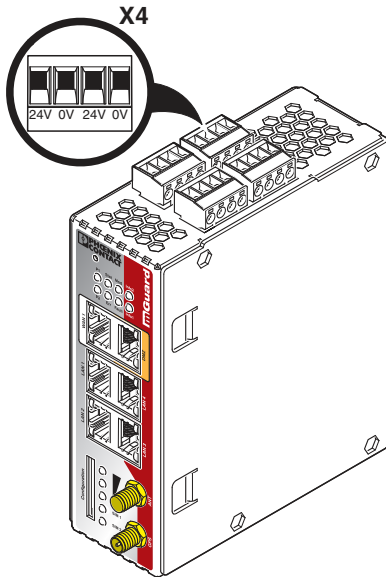
cUL Listed 

cULus Listed 

## Drawings

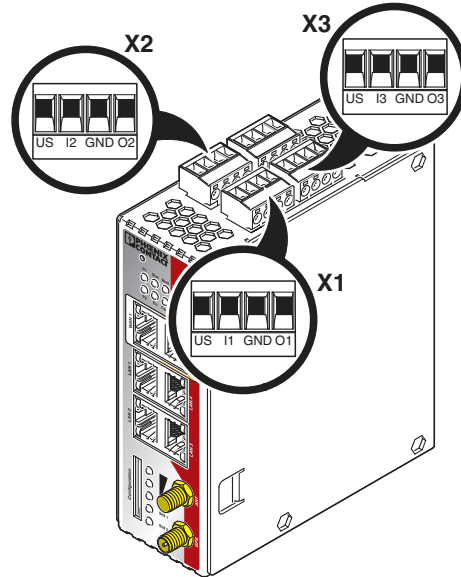
# Router - TC MGUARD RS4000 3G VPN - 2903440

Schematic diagram



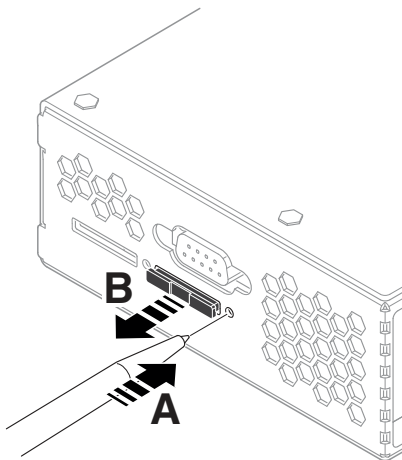
Connecting the supply voltage

Schematic diagram



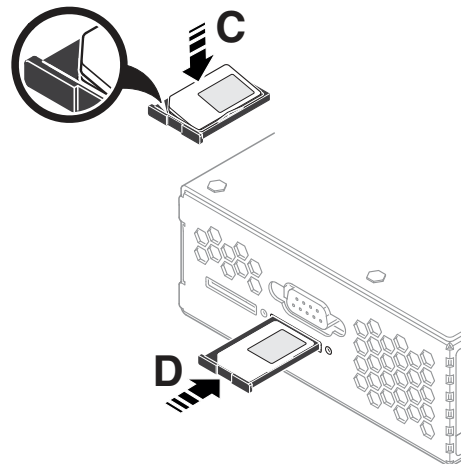
Connection of the cables

Schematic diagram



Remove SIM card holder

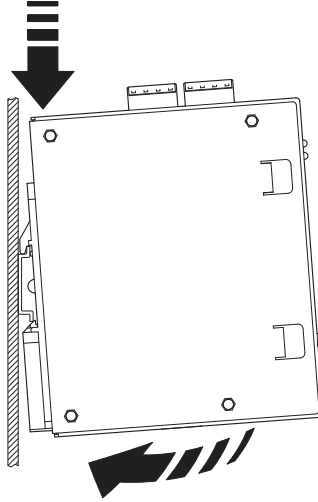
Schematic diagram



Insert the SIM card

# Router - TC MGUARD RS4000 3G VPN - 2903440

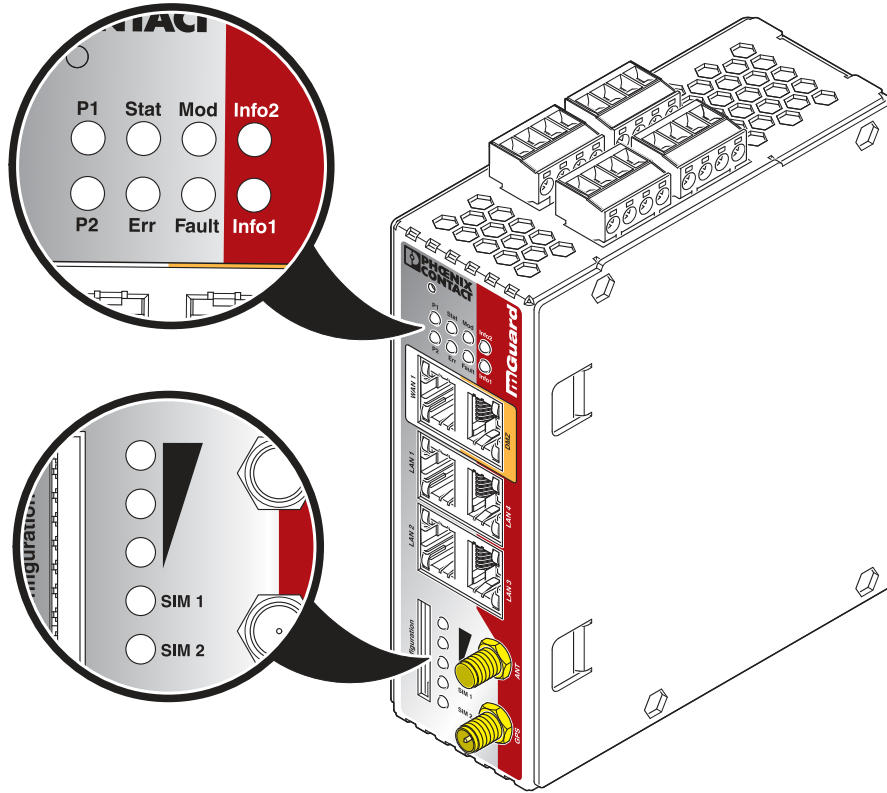
Schematic diagram



Assembly

# Router - TC MGUARD RS4000 3G VPN - 2903440

Schematic diagram

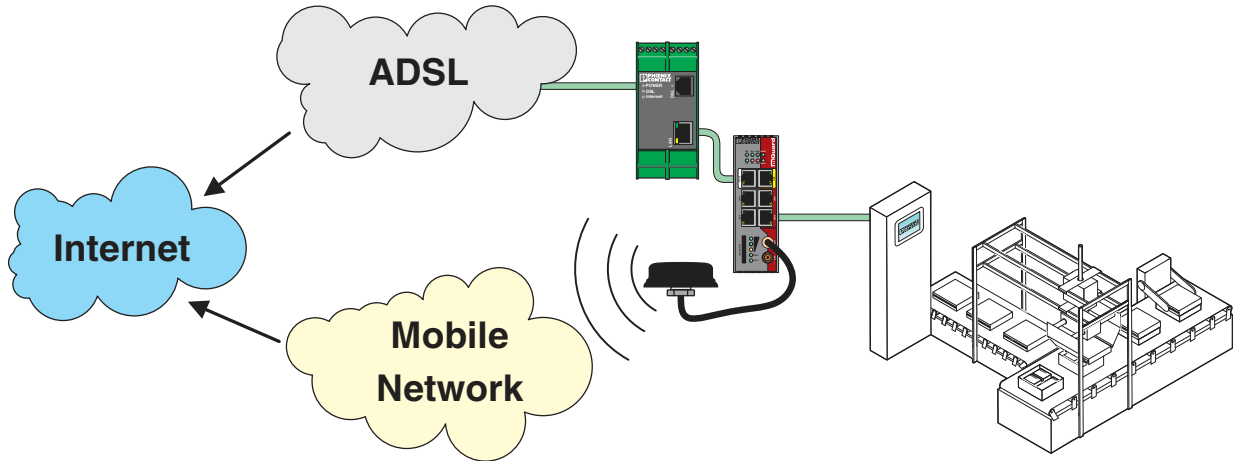


Diagnostic and status indicators



## Router - TC MGUARD RS4000 3G VPN - 2903440

Application drawing



Example application