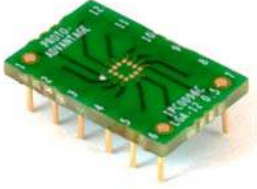


# IPC0096C Proto Advantage

Datasheet revision 1.0

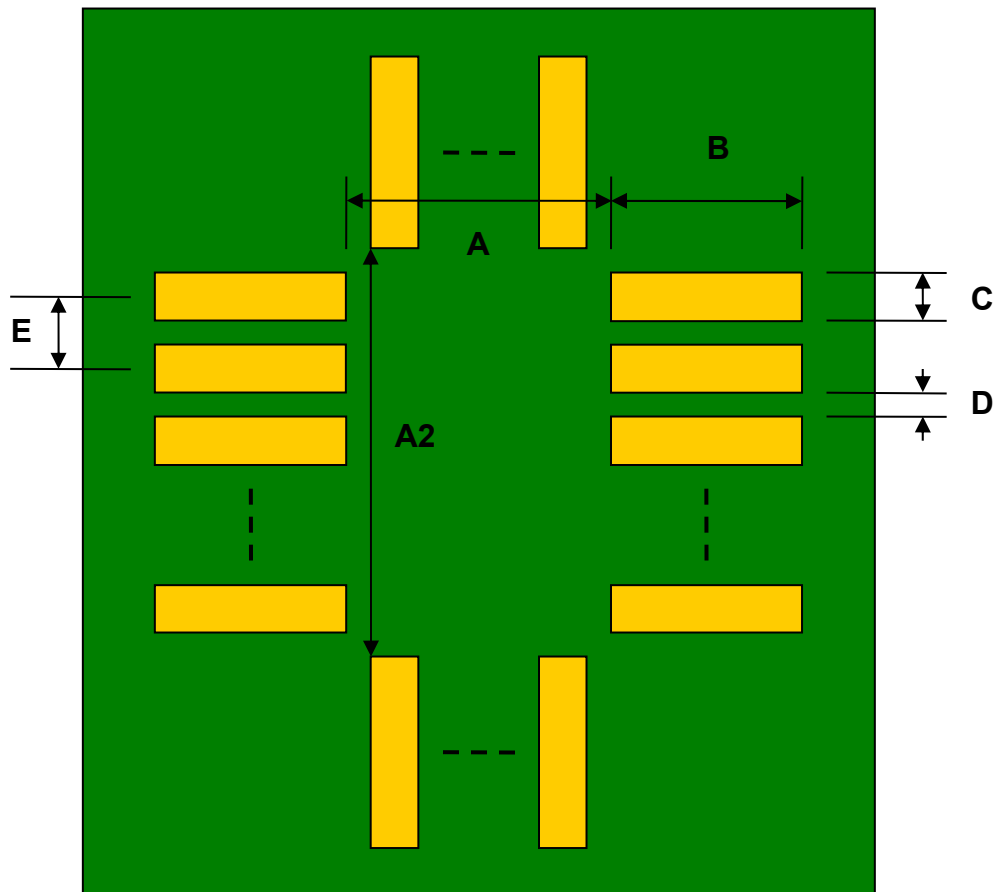
[www.Proto-Advantage.com](http://www.Proto-Advantage.com)

## LGA-12 to DIP-12 SMT Adapter (0.5 mm pitch, 2.0 x 2.0 mm body) *Compact Series*



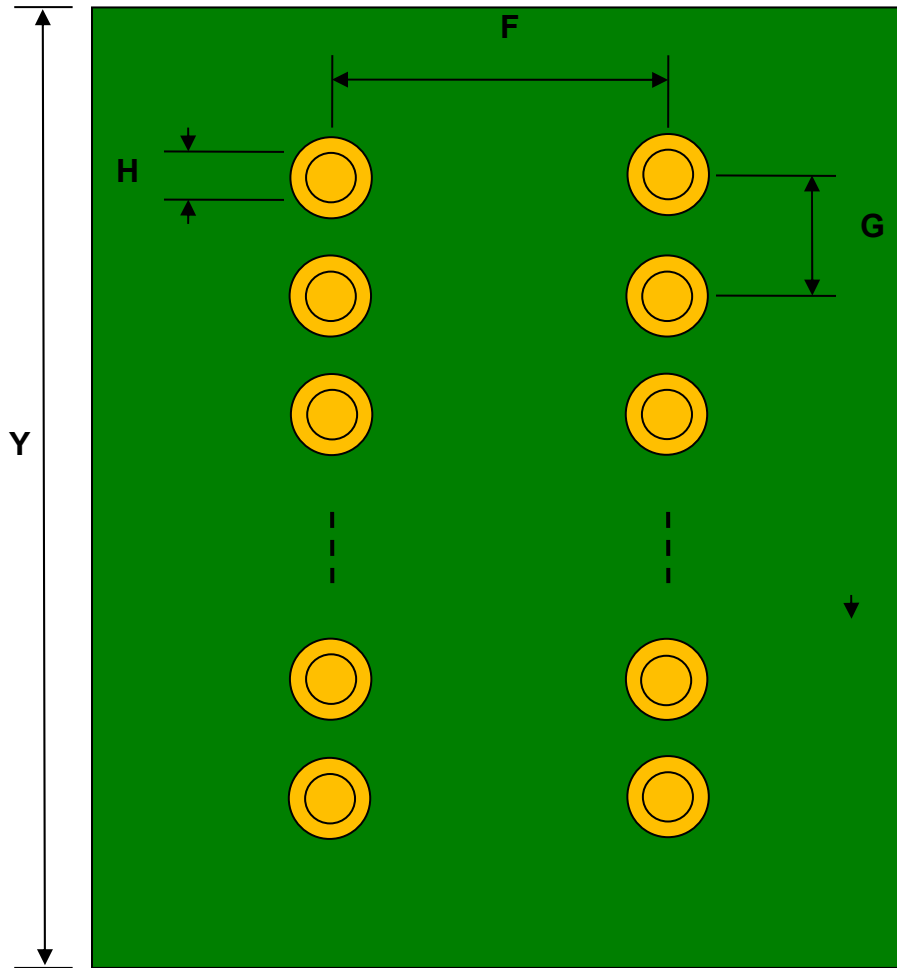
REF.	DIMENSIONS					
	mm			inches		
	MIN.	TYP.	MAX.	MIN.	TYP.	MAX.
A		1.20				
A2		1.20				
B		0.35				
C		0.30				
D		0.20				
E		0.50				
F					0.300	
G					0.100	
H		0.46				
X					0.400	
Y					0.600	

Top View (SMT Footprint)



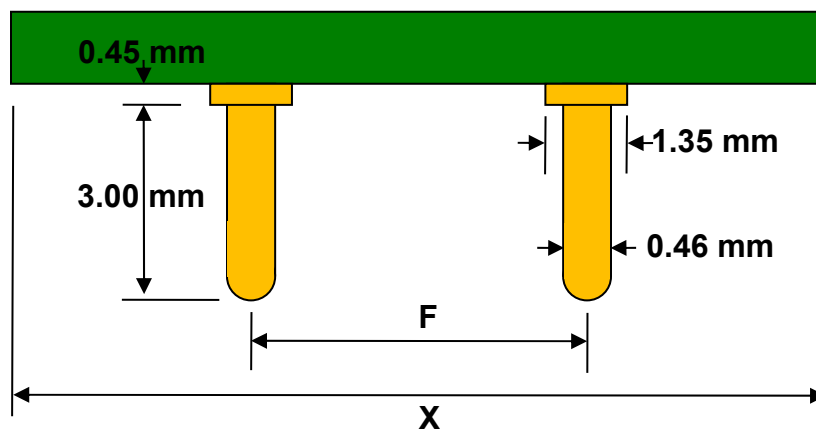
(Representative drawing only - not to scale)

### Bottom View (DIP Pins)



(Representative drawing only - not to scale)

### Side View (DIP Pins)



(Representative drawing only - not to scale)