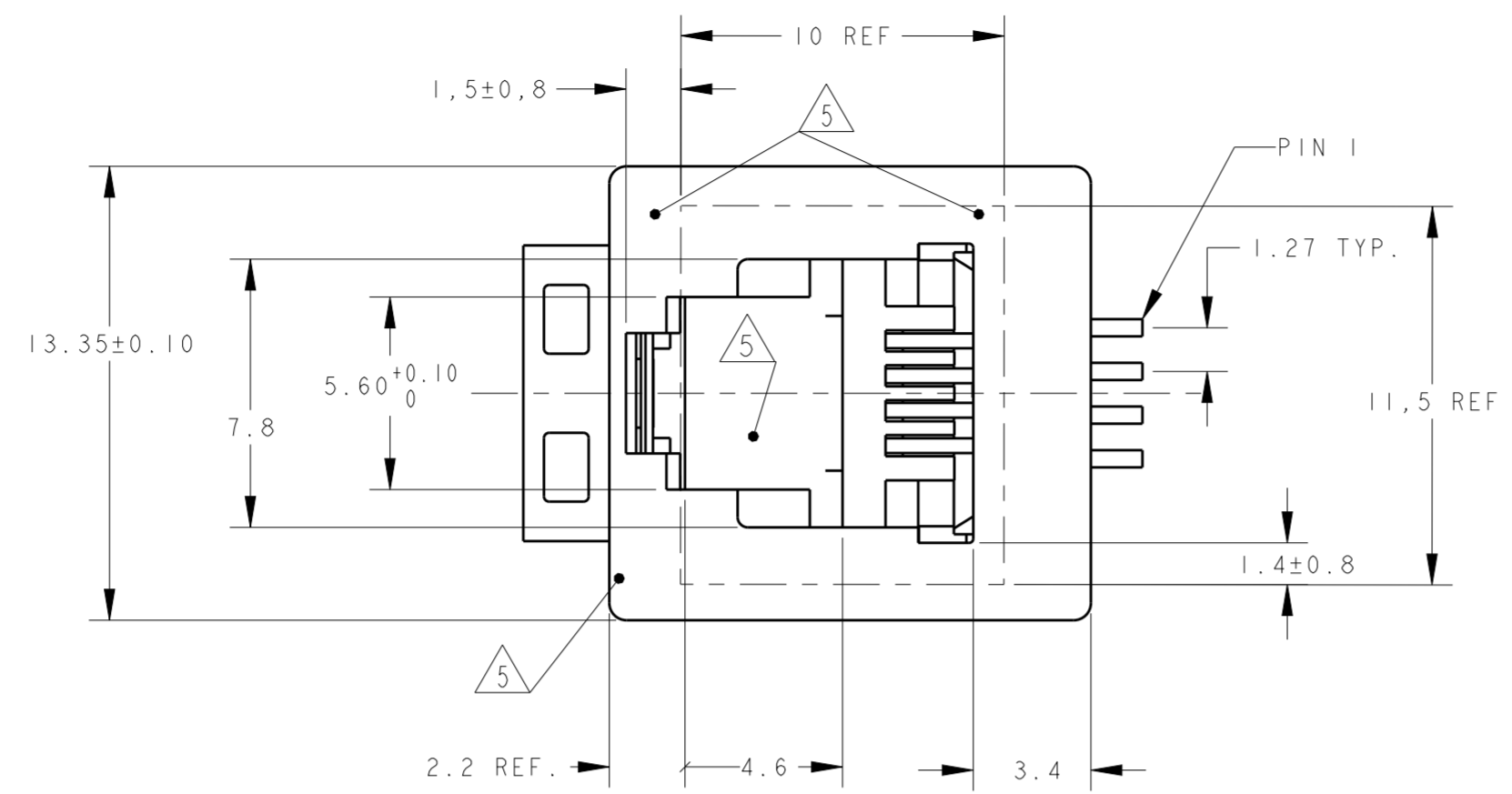
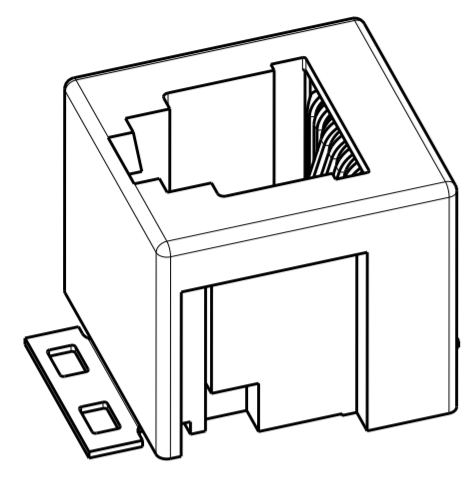
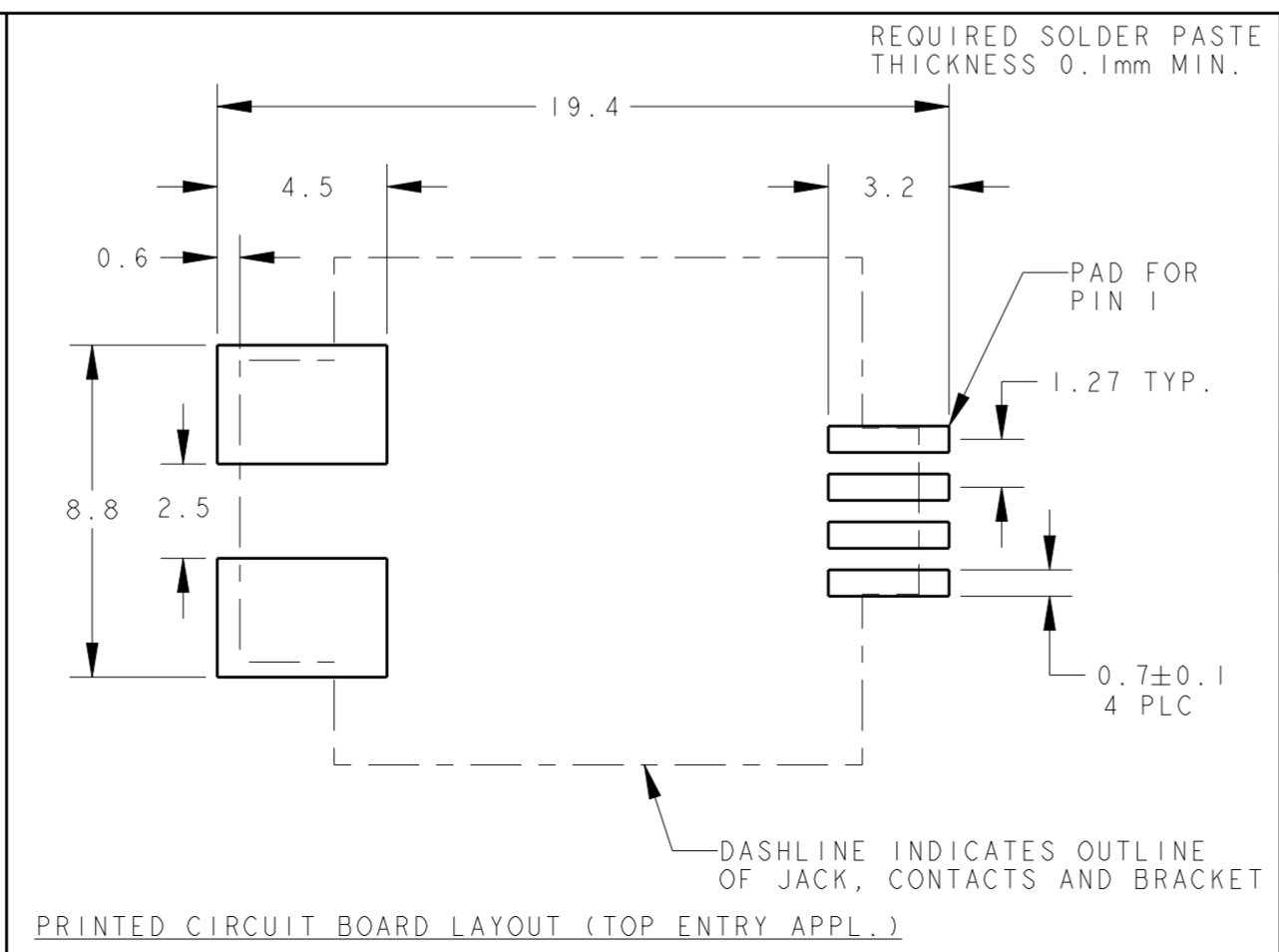
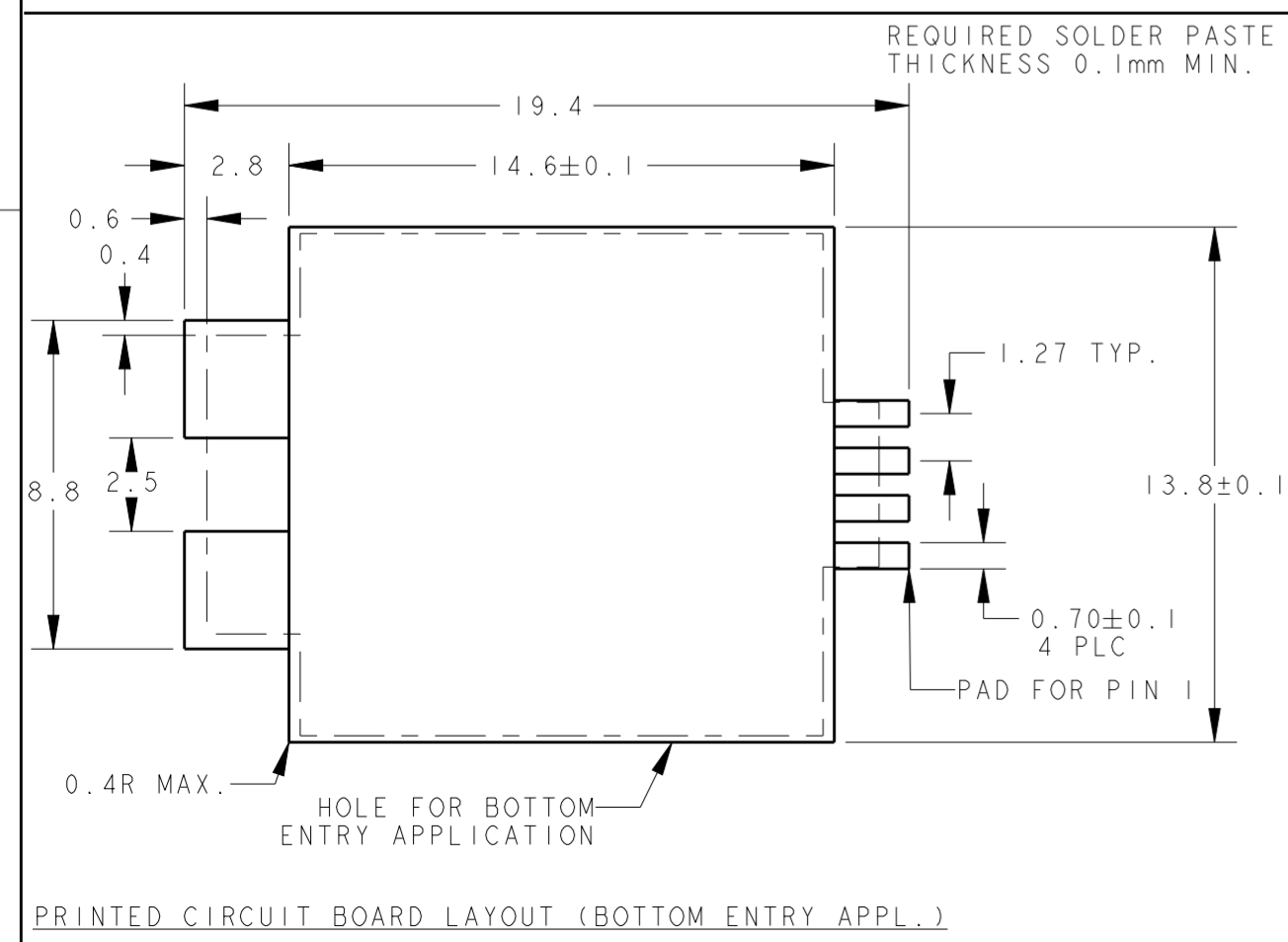
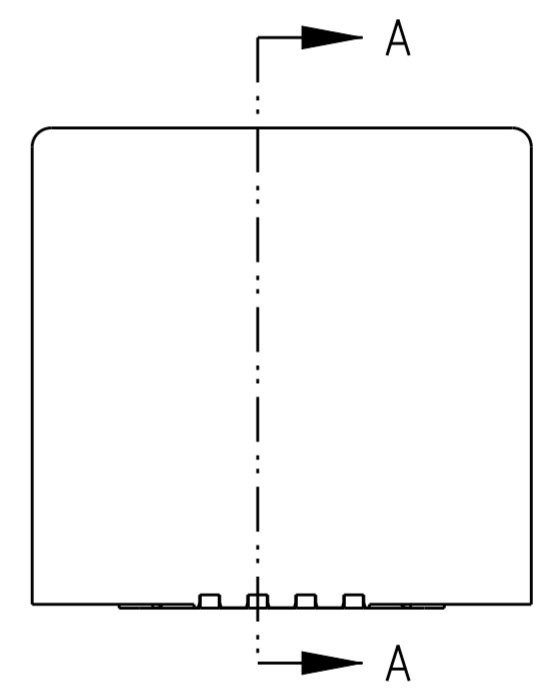
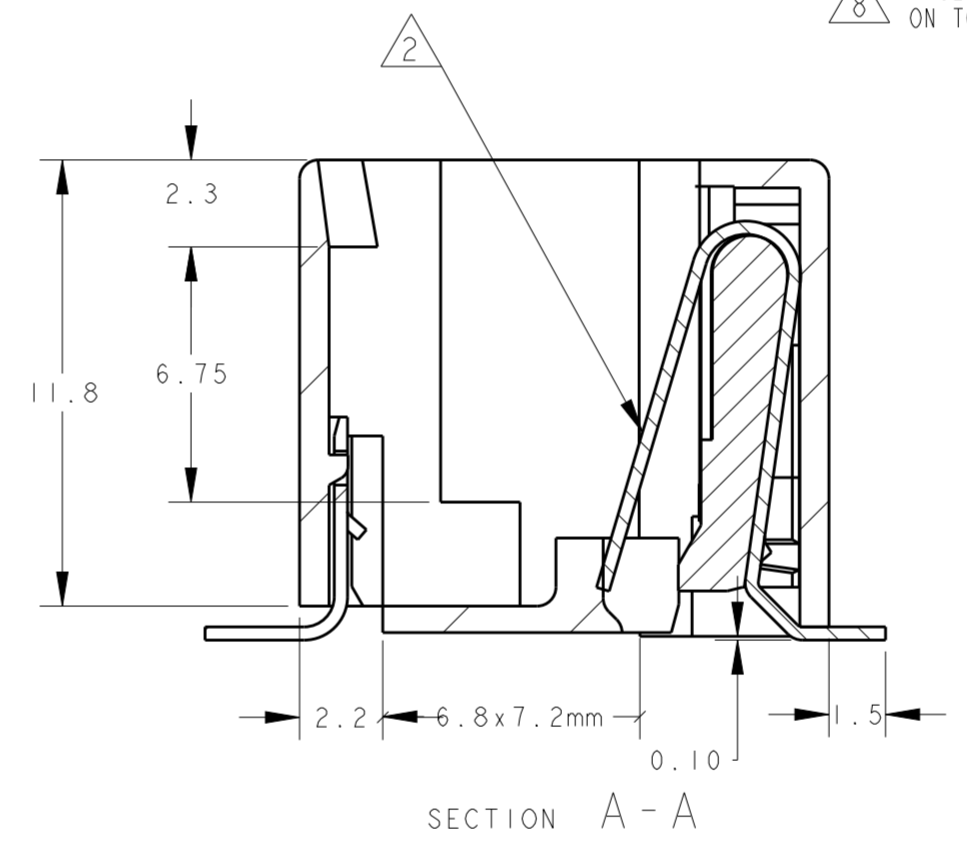
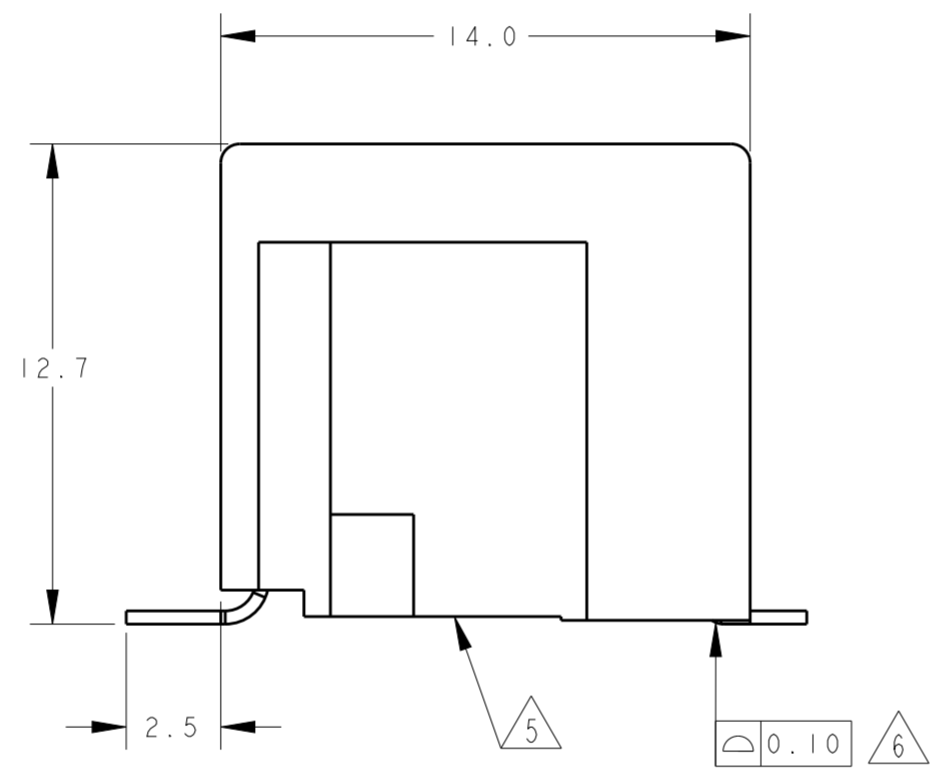
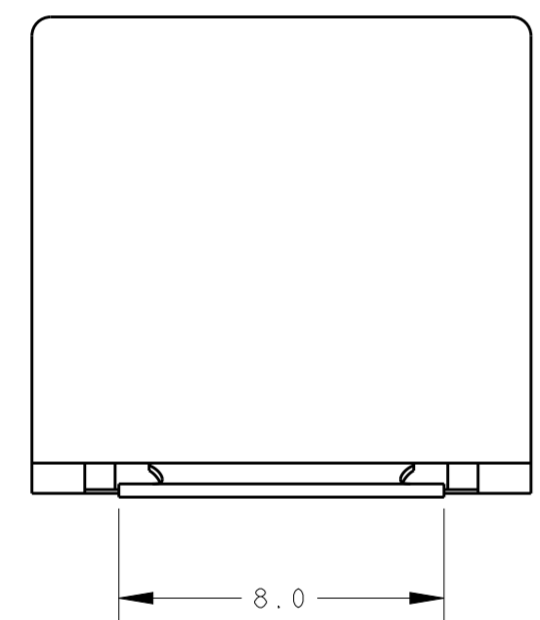


THIS DRAWING IS UNPUBLISHED. RELEASED FOR PUBLICATION
 © COPYRIGHT ALL RIGHTS RESERVED.

REVISIONS							
LOC	DIST	P	LTR	DESCRIPTION	DATE	DWN	APVD
IR	-		D	HOUSING RIB STRENGTHENED AND RAWMATERIAL CHANGED TO PAAT	06JAN2012	PS	RRP
			E	ECO-16-001320	13JUN2016	AD	SH



- NOTES:
- TOLERANCES UNLESS OTHERWISE SPECIFIED: ±0.15.
 - CONTACT PLATING:
 OVERALL: Ni 1.27µm MIN. ALL OVER THE CONTACTS
 SOLDER ZONE: Sn 3.5-5.0µm ON THE SOLDER ZONE OF THE CONTACT
 MATING ZONE: PLATING CONFIRMS TO PRODUCT REQUIREMENTS AS PER SPECIFICATION 108-19117
 - MATERIALS:
 HOUSING: 30% G.F. LCP COLOR BLACK, UL 94V-0.
 CONTACTS: PHOSPHOR BRONZE
 SOLDER BRACKET: TIN PLATED BRASS WITH NICKEL UNDERPLATE.
 - THIS JACK CAN ALSO BE APPLIED HANGING THROUGH A HOLE, IN A PRINTED CIRCUIT BOARD. SEE LEFT PCB LAYOUT.
 - SURFACE CAN BE USED FOR PICKING THE MODULAR JACK WITH, TYPE II SMD MACHINE.
 - MEASURED AT HEEL OF CONTACTS
 COPLANARITY AT TIPS OF CONTACTS MAX. 0.18mm
 - TAPE AND REEL PACKAGING ACCORDING TO EIA 481-3 SPECIFICATIONS.
 - INCLUDES KAPTON TAPE (10x11.5mm) ON TOP SURFACE AS PICK AND PLACE FEATURE.



4 POS. / 4 CONT.	300 PCS ON Ø360 mm OD REEL. TOP ENTRY ORIENTATION PER DETAIL B	8 1982198-2
4 POS. / 4 CONT.	300 PCS ON Ø360 mm OD REEL. TOP ENTRY ORIENTATION PER DETAIL B	1982198-1
REMARKS	PACKAGING 7	PART NUMBER

THIS DRAWING IS A CONTROLLED DOCUMENT.

DWN VATHSA 18Dec2006
 CHK PREMJIITH 18Dec2006

APVD

PRODUCT SPEC 108-19117
 APPLICATION SPEC 114-19041
 WEIGHT -

MATERIAL - SEE NOTE 3
 FINISH - SEE NOTE 2

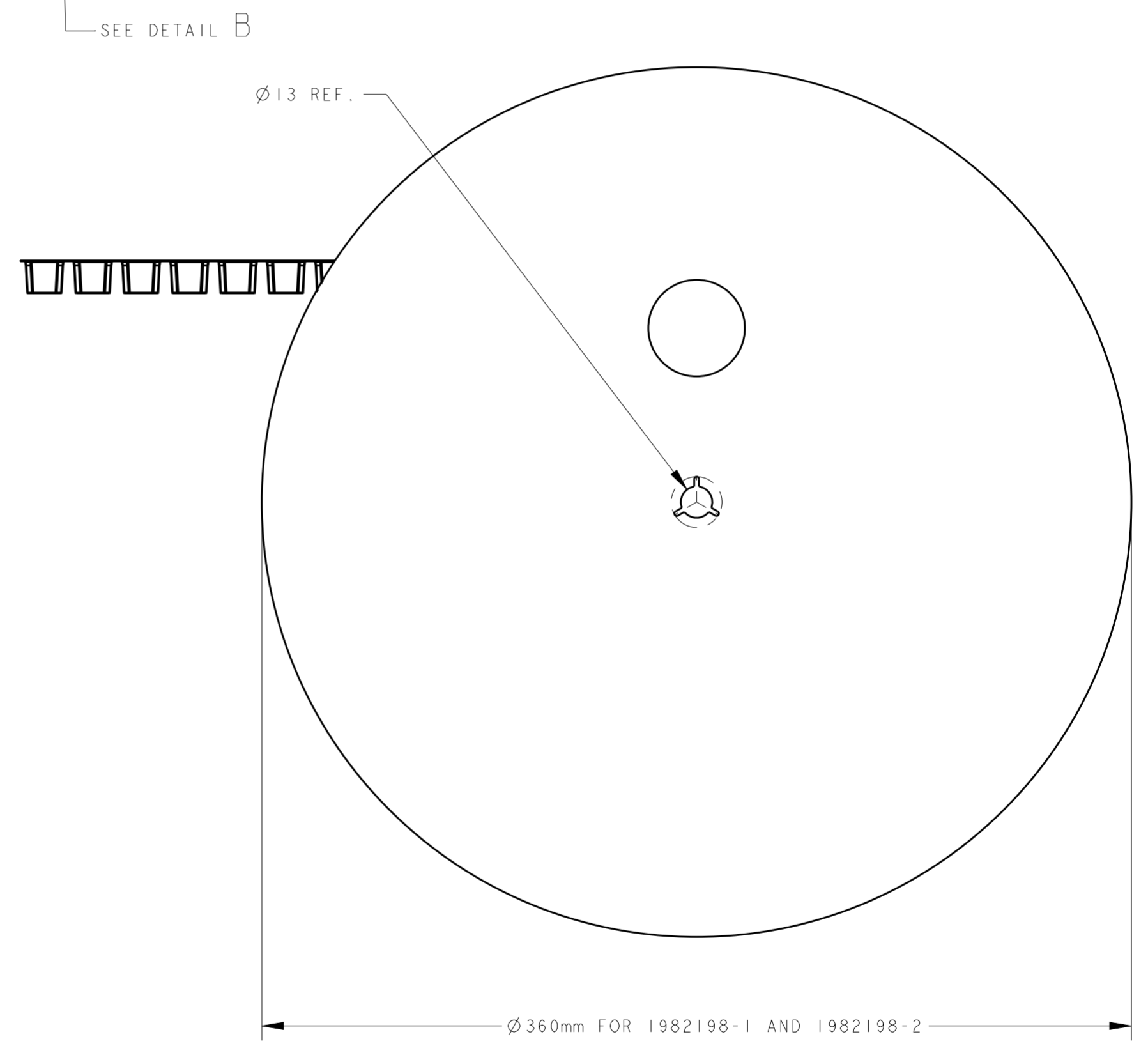
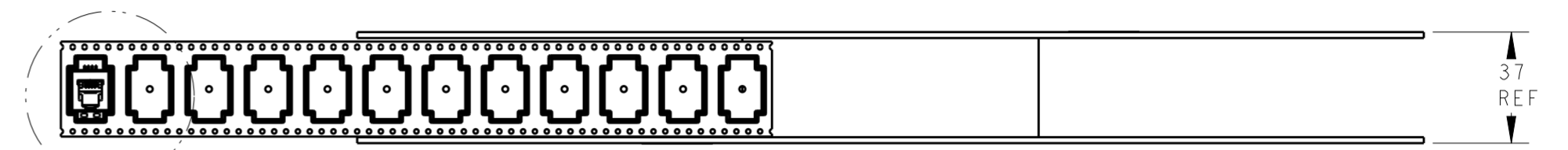
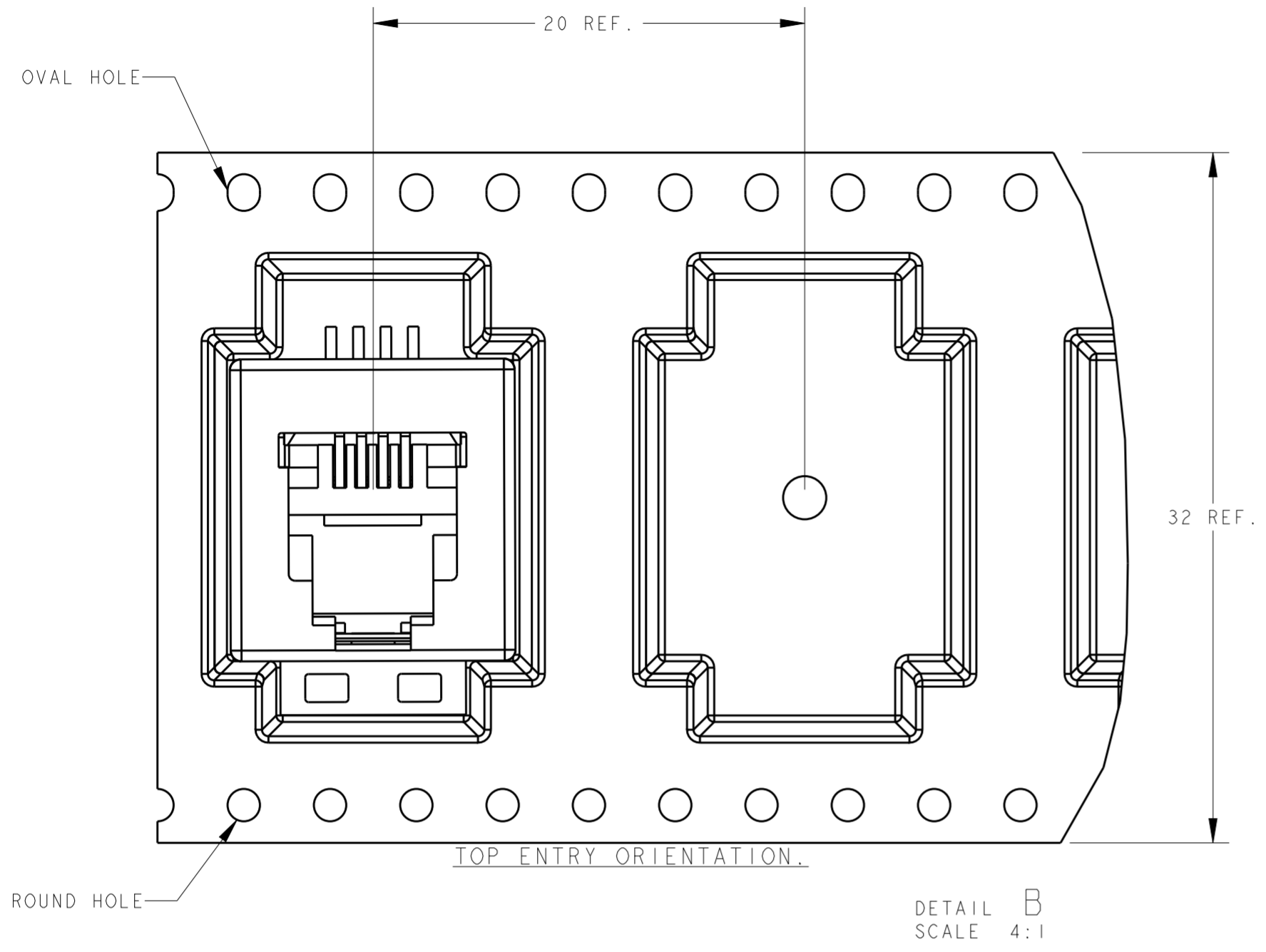
NAME INVERTIBLE MODULAR JACK, 4 POSITION HANDSET SURFACE MOUNT APPLICATION

SIZE A2 CAGE CODE DRAWING NO. C-1982198 RESTRICTED TO -

CUSTOMER DRAWING SCALE 5:1 SHEET 1 OF 2 REV E

THIS DRAWING IS UNPUBLISHED. RELEASED FOR PUBLICATION
 © COPYRIGHT ALL RIGHTS RESERVED.

LOC		DIST		REVISIONS			
P	LTR	DESCRIPTION	DATE	DWN	APVD		
-	-	SEE SHEET 1	-	-	-		



THIS DRAWING IS A CONTROLLED DOCUMENT.		DWN Vathsa 18 Dec 06	TE Connectivity		
		CHK Premjith 18 Dec 06			
DIMENSIONS: mm		APVD	NAME		
TOLERANCES UNLESS OTHERWISE SPECIFIED:		PRODUCT SPEC	INVERTIBLE MODULAR JACK, 4 POSITION		
0 PLC ± -	1 PLC ± - 2 PLC ± - 3 PLC ± - 4 PLC ± - ANGLES ± - FINISH - ± -	108-19117	HANDSET		
MATERIAL -		APPLICATION SPEC	SURFACE MOUNT APPLICATION		
		114-19041	SIZE	CAGE CODE	DRAWING NO
		WEIGHT -	A2	G-1982198	RESTRICTED TO
	CUSTOMER DRAWING	SCALE 5:1	SHEET 2 OF 2	REV E	