



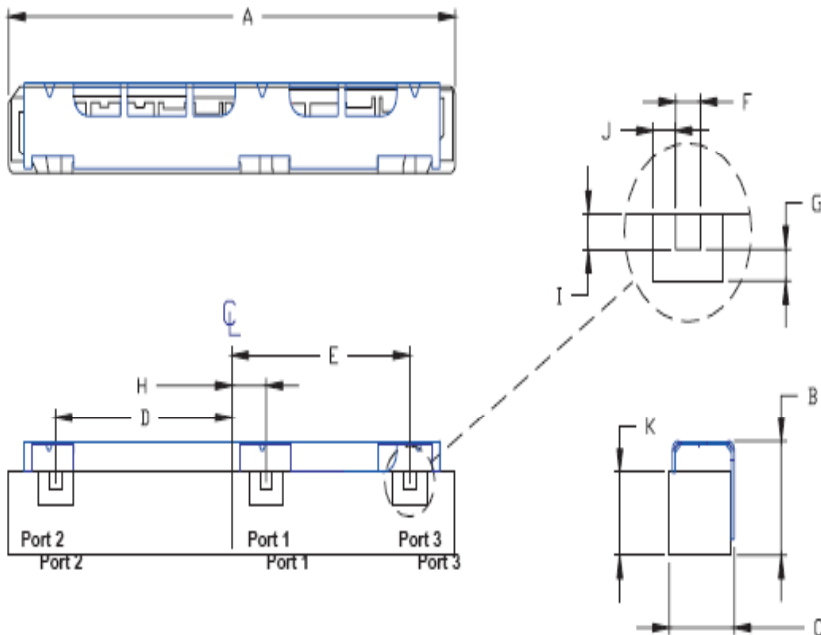
<u>Characteristics</u>	<u>Band 1</u>	<u>Band 2</u>
Passband:	1710-1880 MHz	1920-2170 MHz
Bandwidth:	170 MHz	250 MHz
Passband Return Loss:	10 dB	10 dB
Passband Insertion Loss:	1.8 dB	2 dB
Passband Ripple:	1.30 dB	1.30 dB
Input / Output Impedance:	50 Ohms	50 Ohms
Isolation:	45 dB	45 dB
Power Handling:	2 W max	2 W max

<u>Mechanical</u>	
Mounting Method:	SMT
Dimensions:	40.5 x 7.8 x 6.3 mm

<u>Environmental</u>	
Operating Temperature:	-40 to +70 deg.C
Storage Temperature:	-50 to +90 deg.C

This product is RoHs compliant.

Outline Drawing:



Dim	Nominal (mm)	Tolerance (mm) +/- or max
A	40.5	Max.
B	7.8	Max.
C	6.3	Max.
D	16.17	0.13
E	16.27	0.13
F	1.14	0.13
G	1.02	0.13
H	3.14	0.13
I	1.14	0.13
J	1.02	0.13
K	5.00	Max.



ANATECH ELECTRONICS INC
RF & Microwave Filters & Products

1900 MHz Diplexer

Part Number: AM1795-2045D991



Response Plot:

