

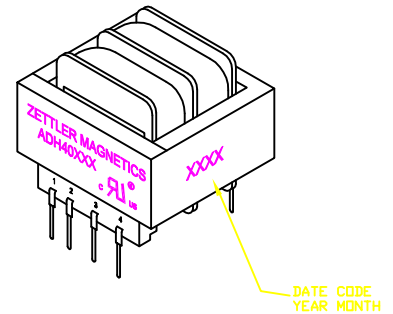
TRANSFORMER, POWER, PCB 6.0VA
 DUAL 115/230V PRIMARIES AND DUAL SECONDARIES

1. ELECTRICAL SPECIFICATIONS:

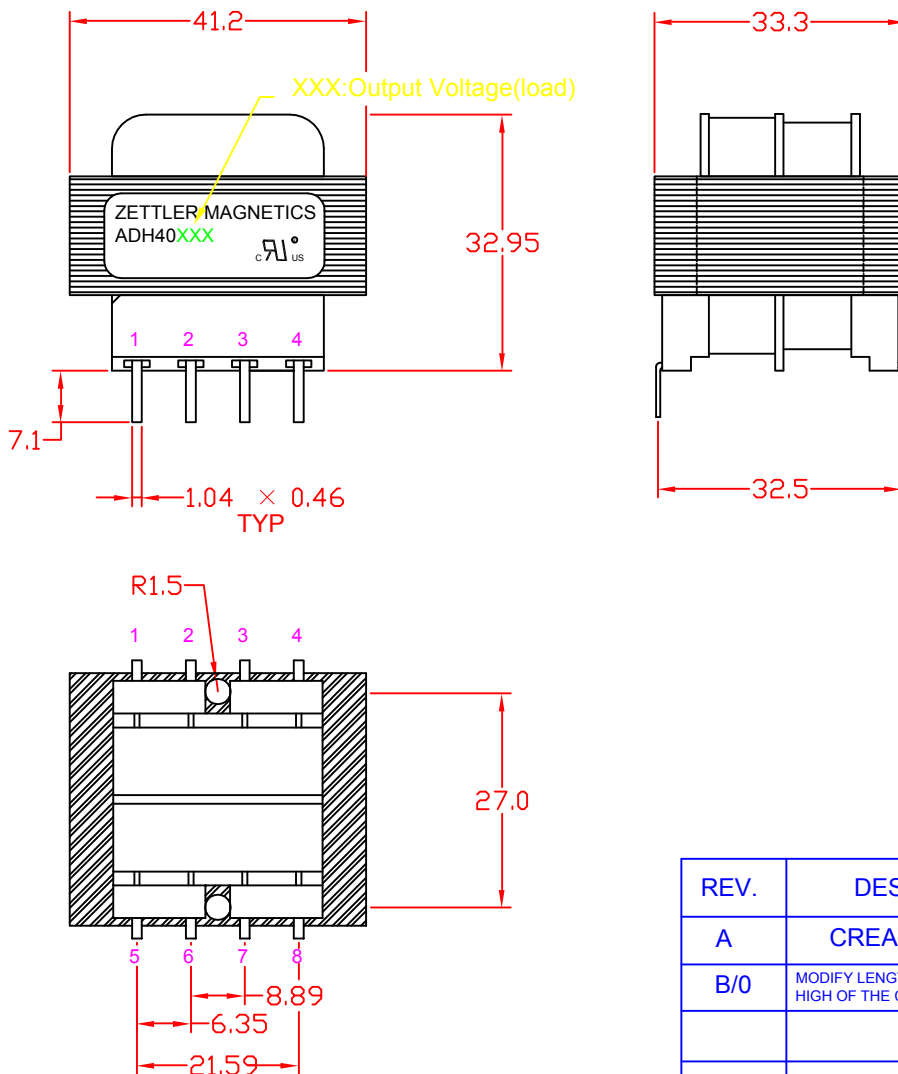
- A. Maximum Power: 6.0VA
- B. Input Voltage and Frequency: 115/230V± 10% @ 50/60Hz
- C. Secondary Voltage: See Electrical Table
- D. Temperature Rise: 45° C MAX allowed
- E. Excitation Current: 30 mA MAX
- F. Hi-Pot: 2500Vrms 1 minute @ Pri. to Sec.
 1500Vrms 1 minute @ Pri. to Core
 1500Vrms 1 minute @ Sec. to Core

G. Safety:

Insulation System ZM-130-5, Class B, UL File No.E177235
 UL506, General Purpose, US and Canada, File No.E177998



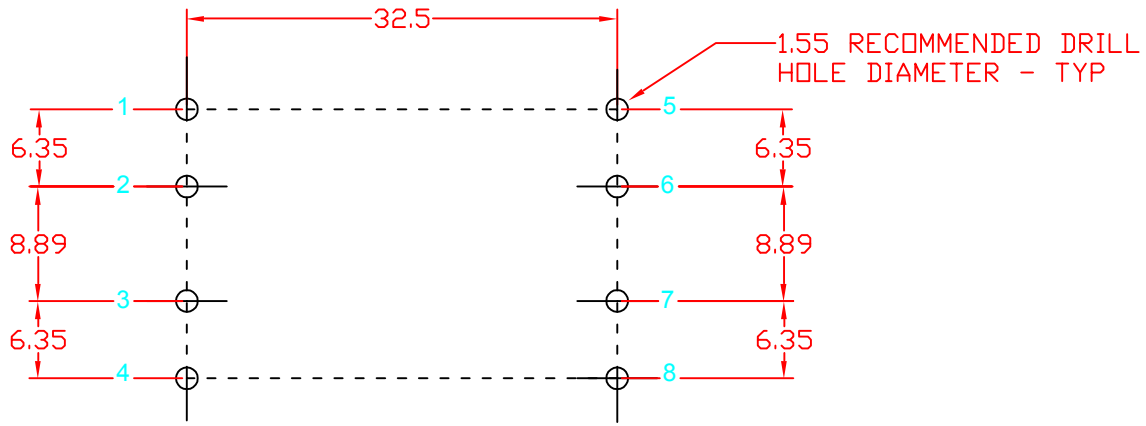
2. MECHANICAL SPECIFICATIONS:



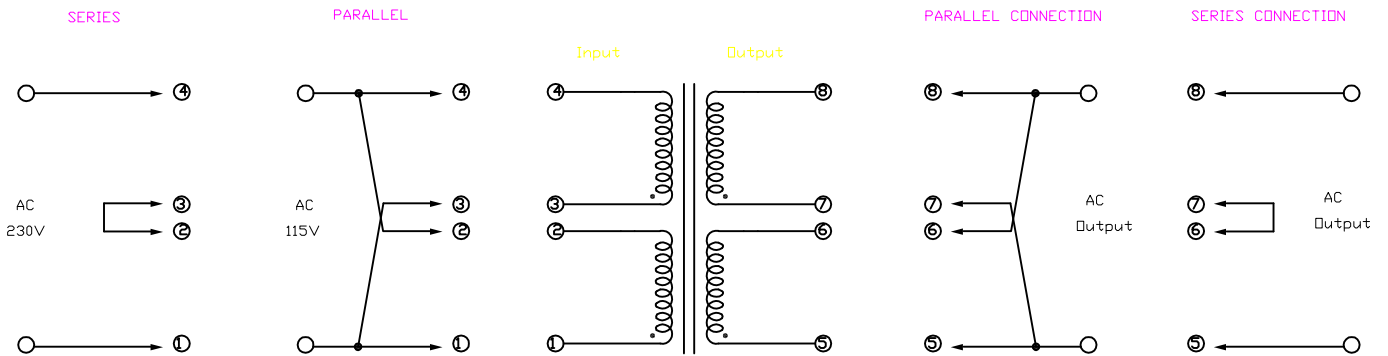
REV.	DESCRIPTION	DRAWN	DATE(M/D/Y)
A	CREATED DRAWING	ZHENG	June 17,2002
B/0	MODIFY LENGTHS OF THE PIN,ADD THE HIGH OF THE CENTER BOBBIN WALL	ye	June 12,2006

TOLERANCE	SCALE NOT 1:1	UNIT mm	DATE (M/D/Y)	MODEL DESCRIPTION		
X	±0.3	DRAWN	ye	ZETTLER MAGNETICS TITLE ADH400 SERIES PCD		
X.X	±0.2	CHECKED				MATERIAL Class B 130° C
X.XX	±0.1	QC				MODEL: ADH400 SERIES
THICKNESS	/	APPROVED				SHEET: 1 OF 2
REV.	B/0	E:\ACAD\ADH400SERIES\ADH400SERIESPCD				

3. MOUNTING FOOTPRINT:



4. SCHEMATIC DIAGRAM:



5. ELECTRICAL TABLE:

INPUT	SERIES / PARALLEL			
	PARALLEL CONNECTION		SERIES CONNECTION	
OUTPUT	AC VOLTS	RMS AMPS	AC VOLTS	RMS AMPS
ADH40010	5V	1.2A	10V	0.6A
ADH40012	6.3V	1.0A	12.6V	0.5A
ADH40016	8V	0.8A	16V	0.4A
ADH40020	10V	0.6A	20V	0.3A
ADH40024	12V	0.5A	24V	0.25A
ADH40028	14V	0.4A	28V	0.2A
ADH40036	18V	0.34A	36V	0.17A
ADH40048	24V	0.25A	48V	0.125A
ADH40056	28V	0.22A	56V	0.11A
ADH40120	60V	0.1A	120V	0.05A

REV.	DESCRIPTION	DRAWN	DATE(M/D/Y)
A	CREATED DRAWING	ZHENG	June 17,2002
B/0	MODIFY LENGTHS OF THE PIN,ADD THE HIGH OF THE CENTER BOBBIN WALL	ye	June 12,2006

TOLERANCE	SCALE NOT 1:1	UNIT mm	DATE (M/D/Y)	MODEL DESCRIPTION	
X	±0.3	DRAWN	ye	<div style="text-align: center;"> ZETTLER MAGNETICS </div>	
X.X	±0.2	CHECKED	June 12,2006		
X.XX	±0.1	QC			
THICKNESS	/	APPROVED			
REV.	B/0	E:\ACAD\ADH400SERIES\ADH400SERIESPCD		<div style="text-align: center;"> TITLE ADH400 SERIES PCD </div>	MATERIAL Class B 130° C MODEL: ADH400 SERIES SHEET: 2 OF 2