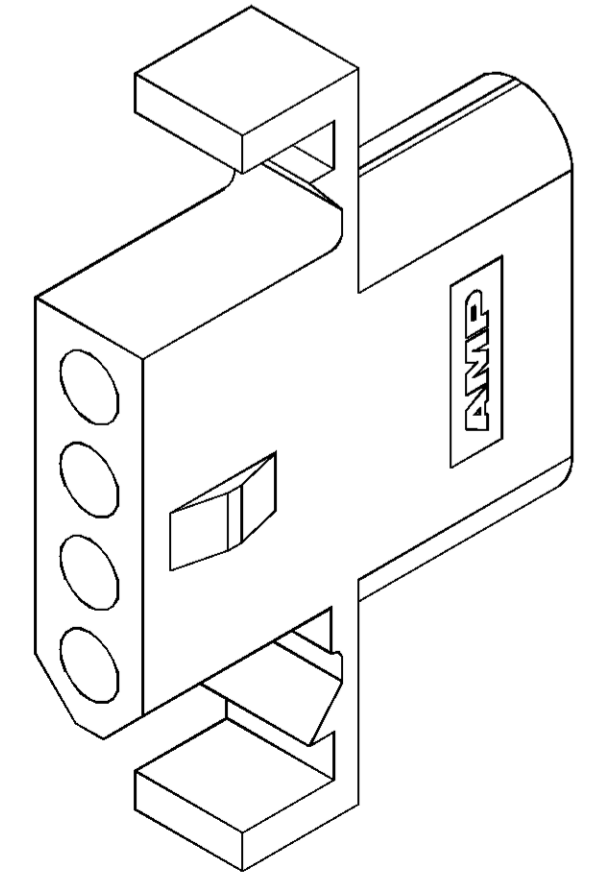
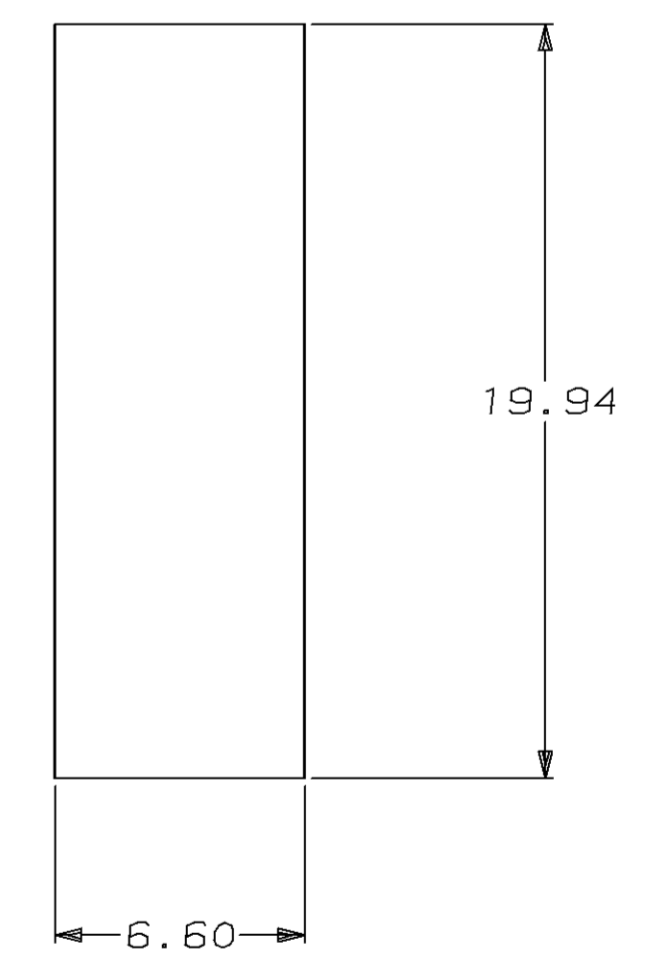
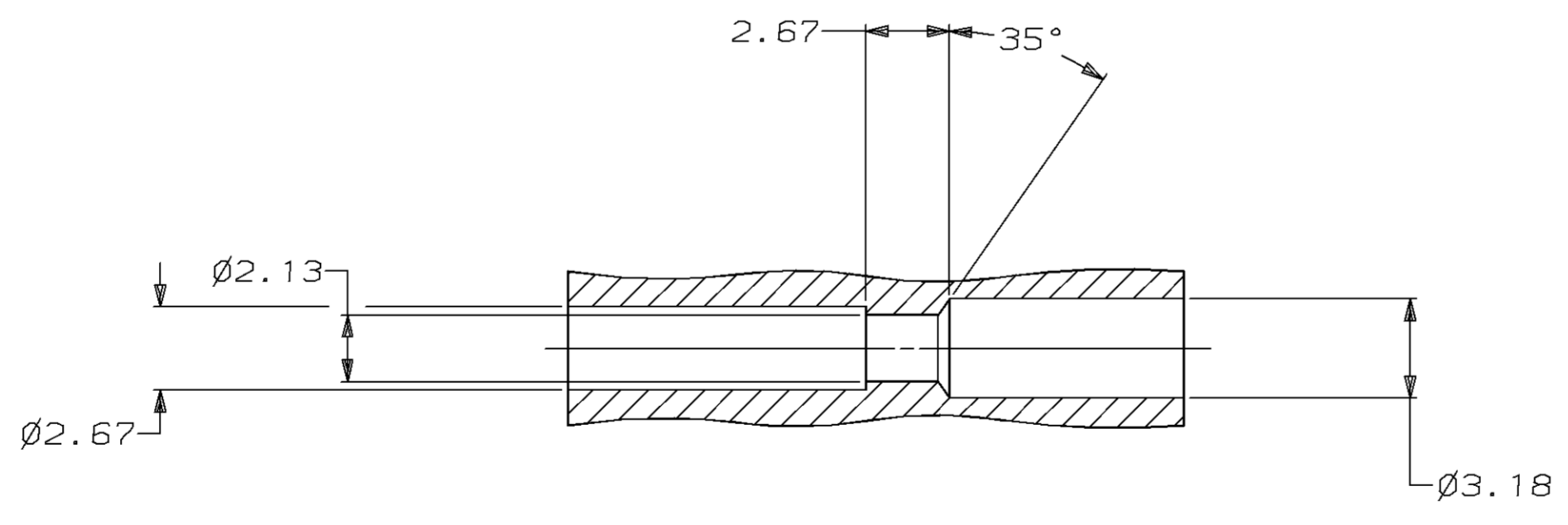
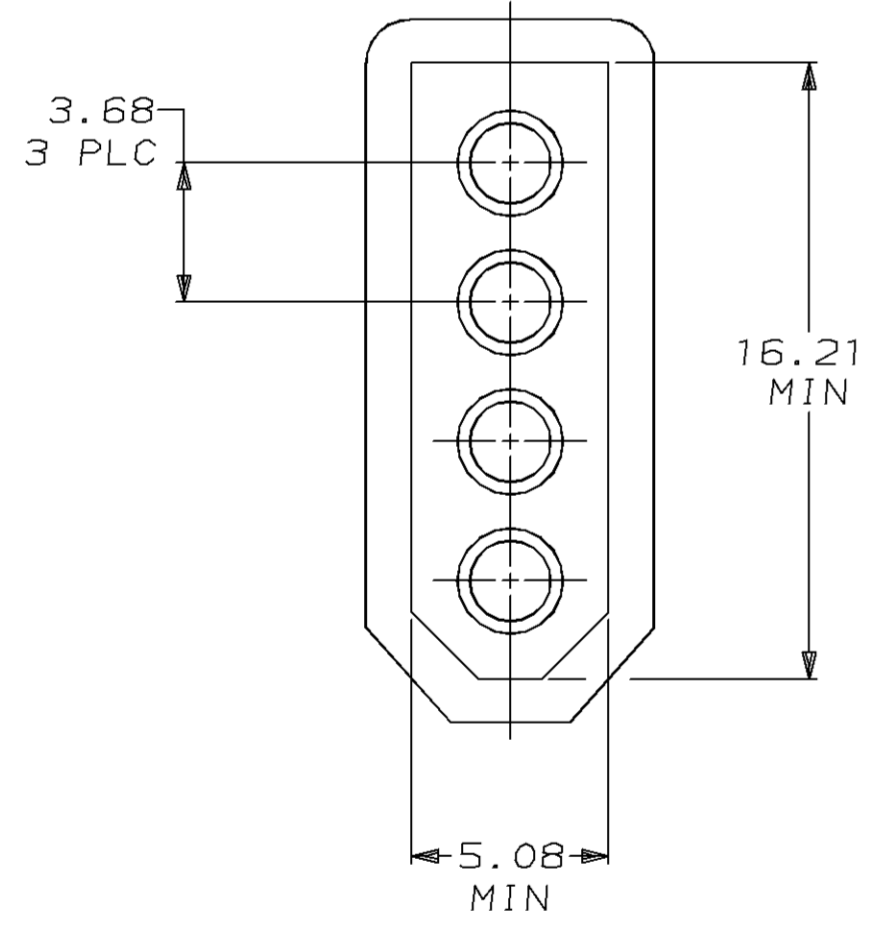
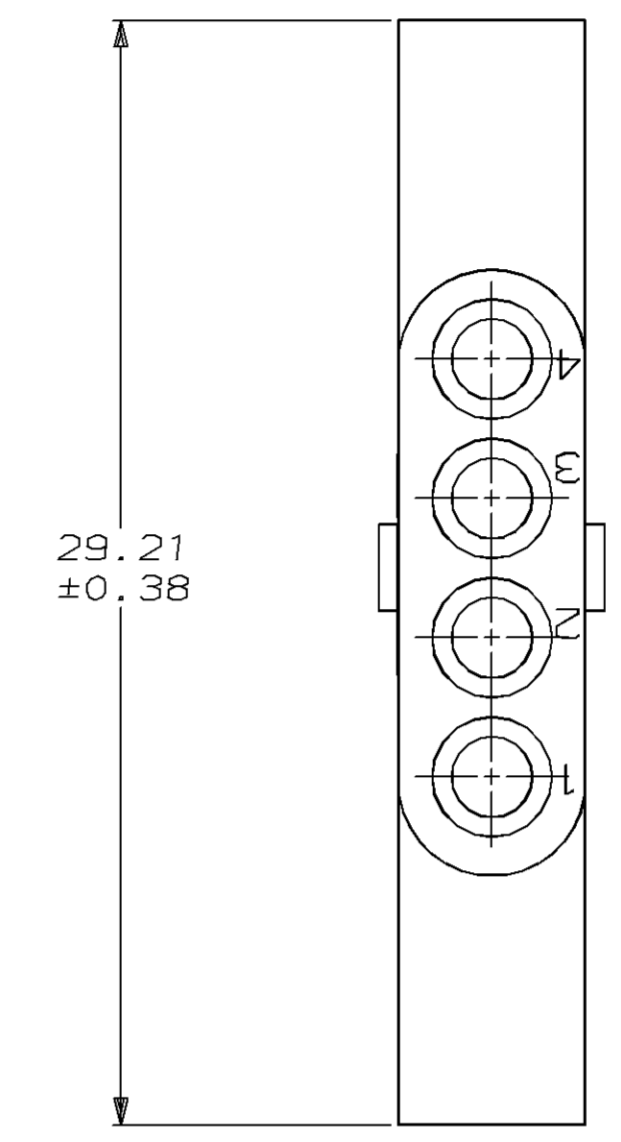
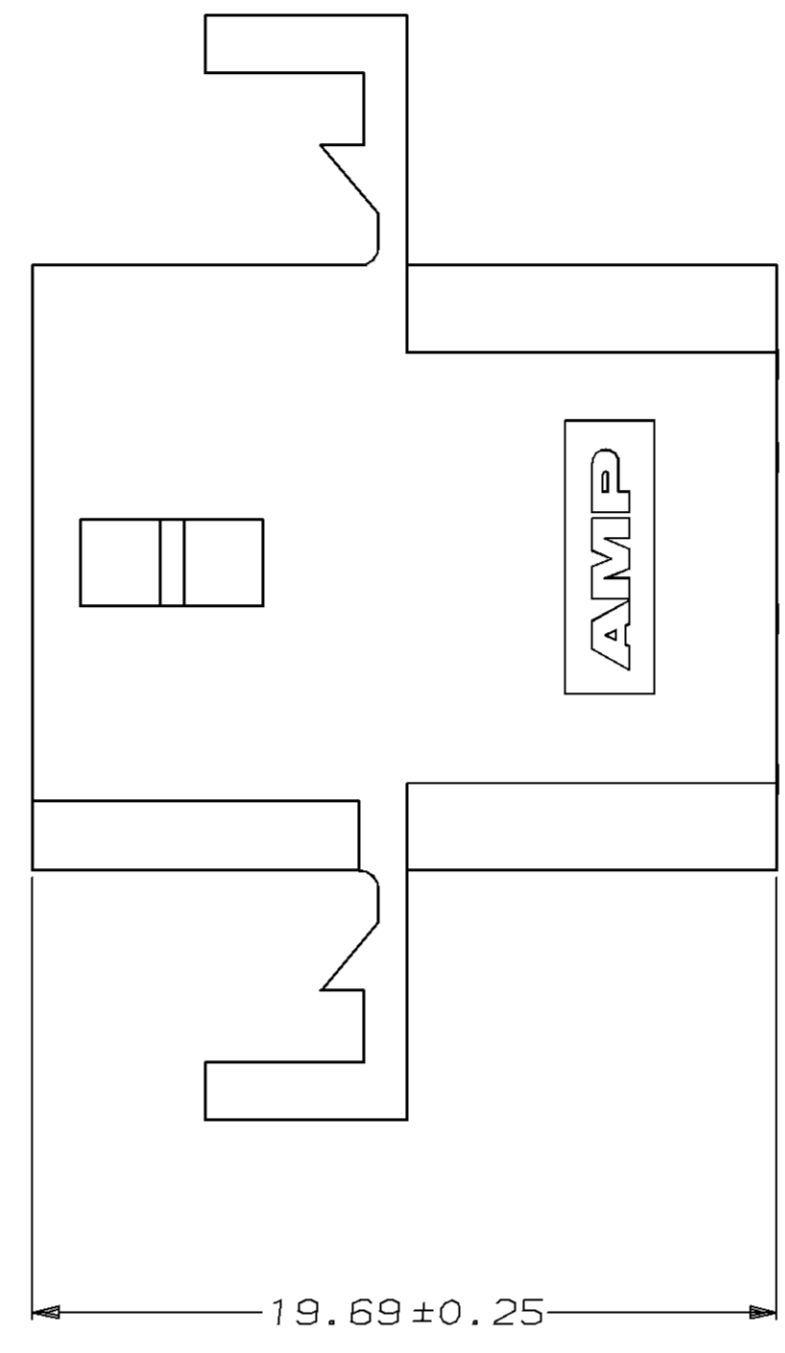
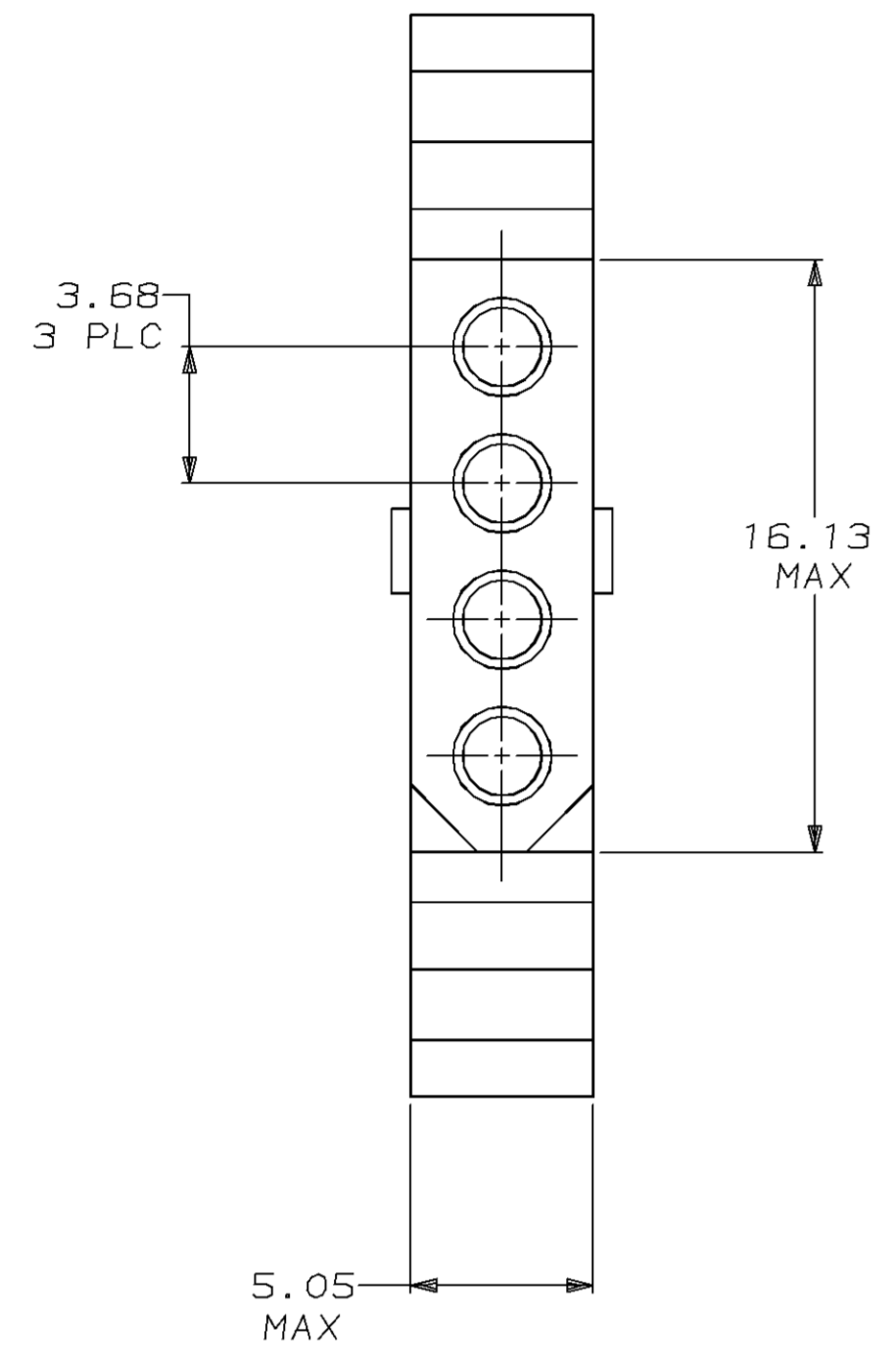


LOC		DIST		P		F		ZONE		LTR		REVISIONS		DATE	APPD
CM	53												REV PER EC 0730-0221-95	11-20-95	JH



MATING CONNECTOR INTERFACE

TYPICAL RECEPTACLE CAVITY SECTION  
(DIMENSIONS REFERENCE ONLY)

RECOMMENDED CUT OUT  
FOR 1.52 MAX THICK PANEL

2.13	.084	6.60	.260	-	-
1.57	.062	5.08	.200	29.21	1.150
1.52	.060	5.05	.199	19.94	.785
0.38	.015	3.68	.145	19.69	.775
0.25	.010	3.18	.125	16.21	.638
0.13	.005	2.67	.105	16.13	.635
MM	IN	MM	IN	MM	IN

CONVERSION TABLE



THIS DRAWING IS A CONTROLLED DOCUMENT FOR AMP INCORPORATED. IT IS SUBJECT TO CHANGE AND THE CONTROLLING ENGINEERING ORGANIZATION SHOULD BE CONTACTED FOR THE LATEST REVISION.

DO NOT SCALE PRINT. UNLESS SPECIFIED DIMENSIONS IN mm [INCHES] TOLERANCES ON:		DR 11-4-93 K. WHITAKER		770335-1 PART NO	
2 PLC DEC ± 0.13	3 PLC DEC ± 0.13	CHK 11-4-93 R. SWING		AMP AMP Incorporated Harrisburg, PA 17105-3608	
ANGLES ± 1°		APPD 11-4-93 C. CASH		NAME	
		APPD 11-4-93 C. CASH		RECEPTACLE, PANEL MOUNT, 4 CIRCUIT, .062 PIN AND SOCKET	
MATERIAL	NYLON, UL 94V-2 NATURAL	PRODUCT SPEC		SIZE	D 00779
FINISH	-	APPLICATION SPEC		CAGE CODE	00779
		WEIGHT		DRAWING NO	©-770335
				SCALE	5:1
				SHEET	1 OF 1