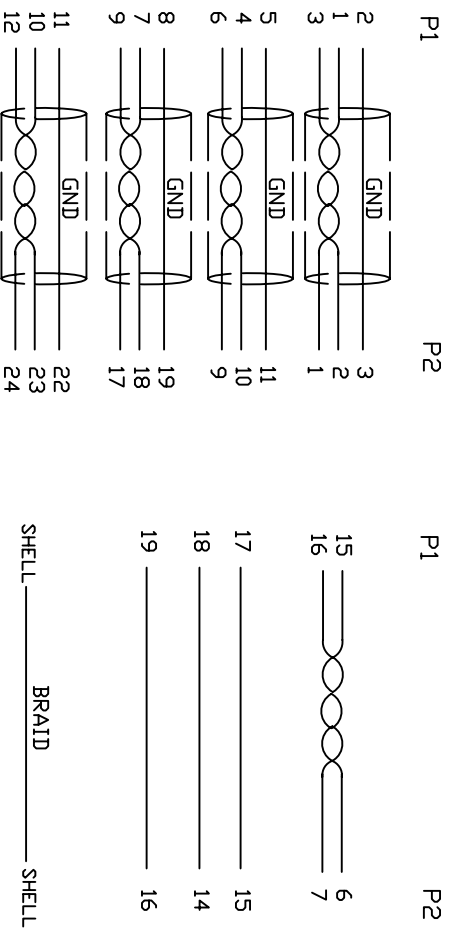


1. Wiring Diagram.



8	SCREW	#4-40UNC RE32±0.2mm	BLK	2	
7	COOPER	W30MM* ϕ 75MM		1	
6	COOPER	W13MM* ϕ 30MM		1	
5	PVC	45P PVC BLACK OVERMOLD		80g	
4	PE	LDPE 500026 6201 INSIDE MOLDING		30g	
3	CONN	DVI18+1 MALE PIN G/F ,SHELL PLATED G/F, INSULATION BLACK		1	P2
2	CONN	HDMI A TYPE MALE PIN G/F ,SHELL PLATED G/F, INSULATION BLACK		1	P1
1	CABLE	UL20276 (28AWG (1/0.32CUAD) *IP+D+EA+AL/MY) *IP+28AWG (1/0.32CUAD) *IP+ 28AWG (1/0.32CU) X3C+AEM(16/8/0.12AM) OD7.3 BLACK		1	5000mm
NO.	PART NO.	DESCRIPTION		QTY	UNIT/REF
BILL OF MATERIAL					

2. Cable test condition :

Open / Short : 100%

Insulation resistance : 5M ohms

Contact resistance : 2 ohm

Hipot : DC 300V / 1 sec

3 Each pcs with PE polybag.

A	INITIAL RELEASE	2017/4/20
REV/ECN#	DESCRIPTION	DATE
Cnc Tech, LLC		
DRAWN EDWINLAI	DATE 2/28/17	TITLE HDMI M TO DVI18+1 M CABLE
CHECKED WinC	DATE 2/28/17	DWG NO. 741-20010-00500
APPROVAL	CUSTOMER P/No	REV
	CUSTOMER:	
	SHEET 1 OF 1	