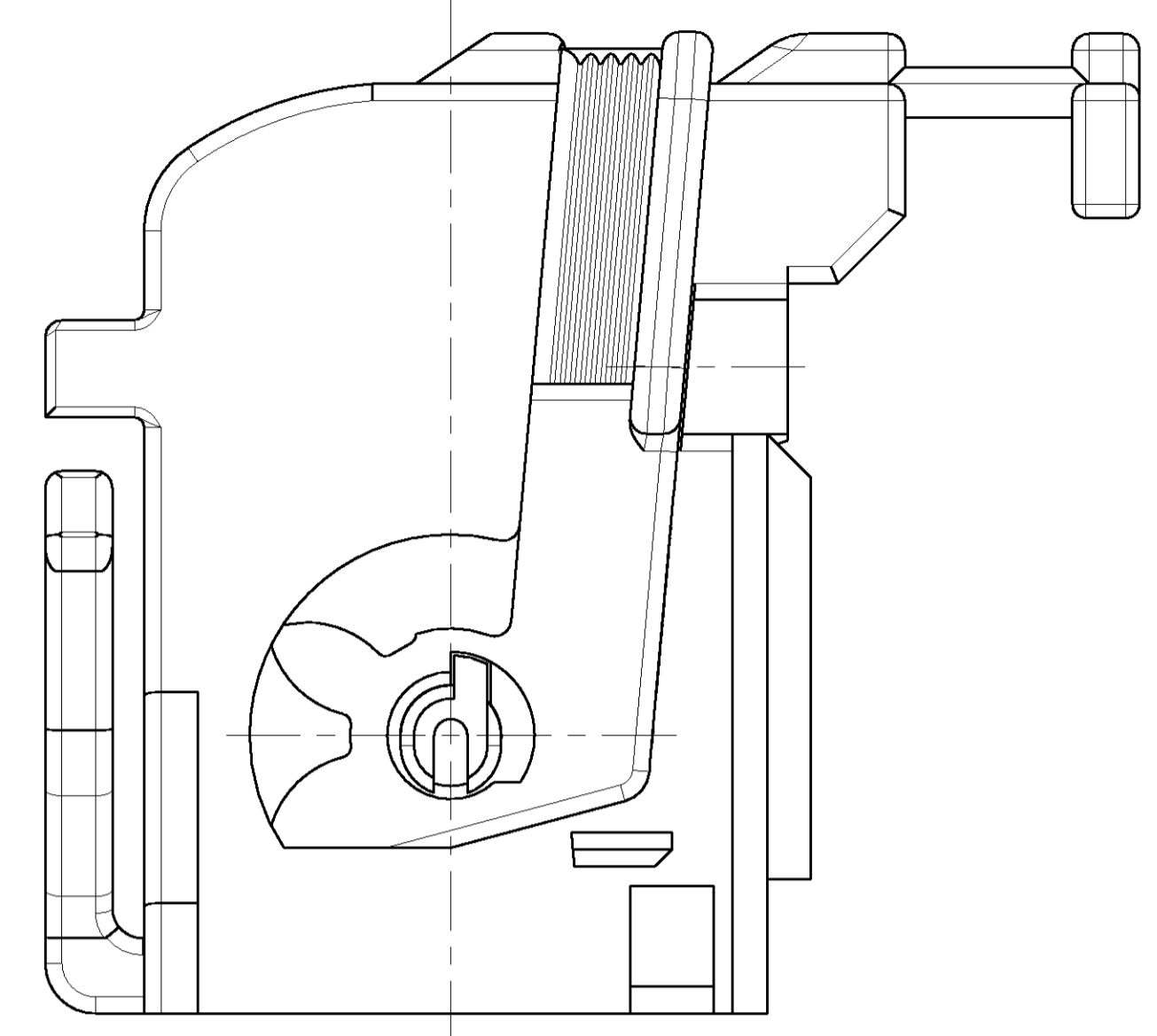
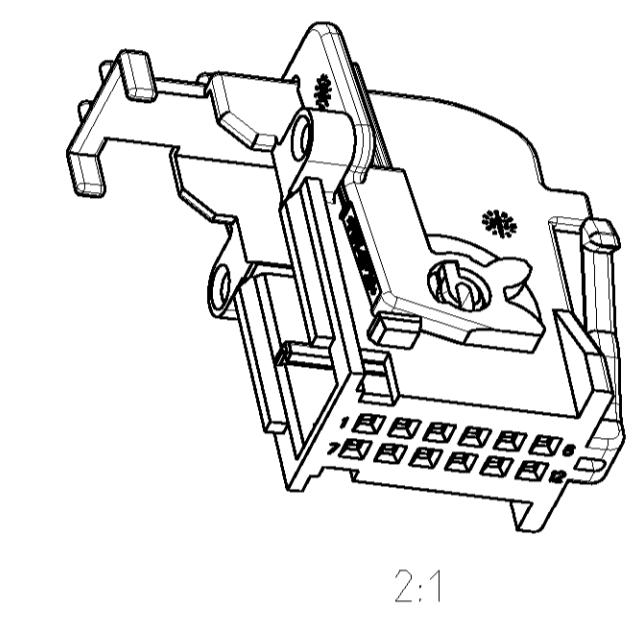
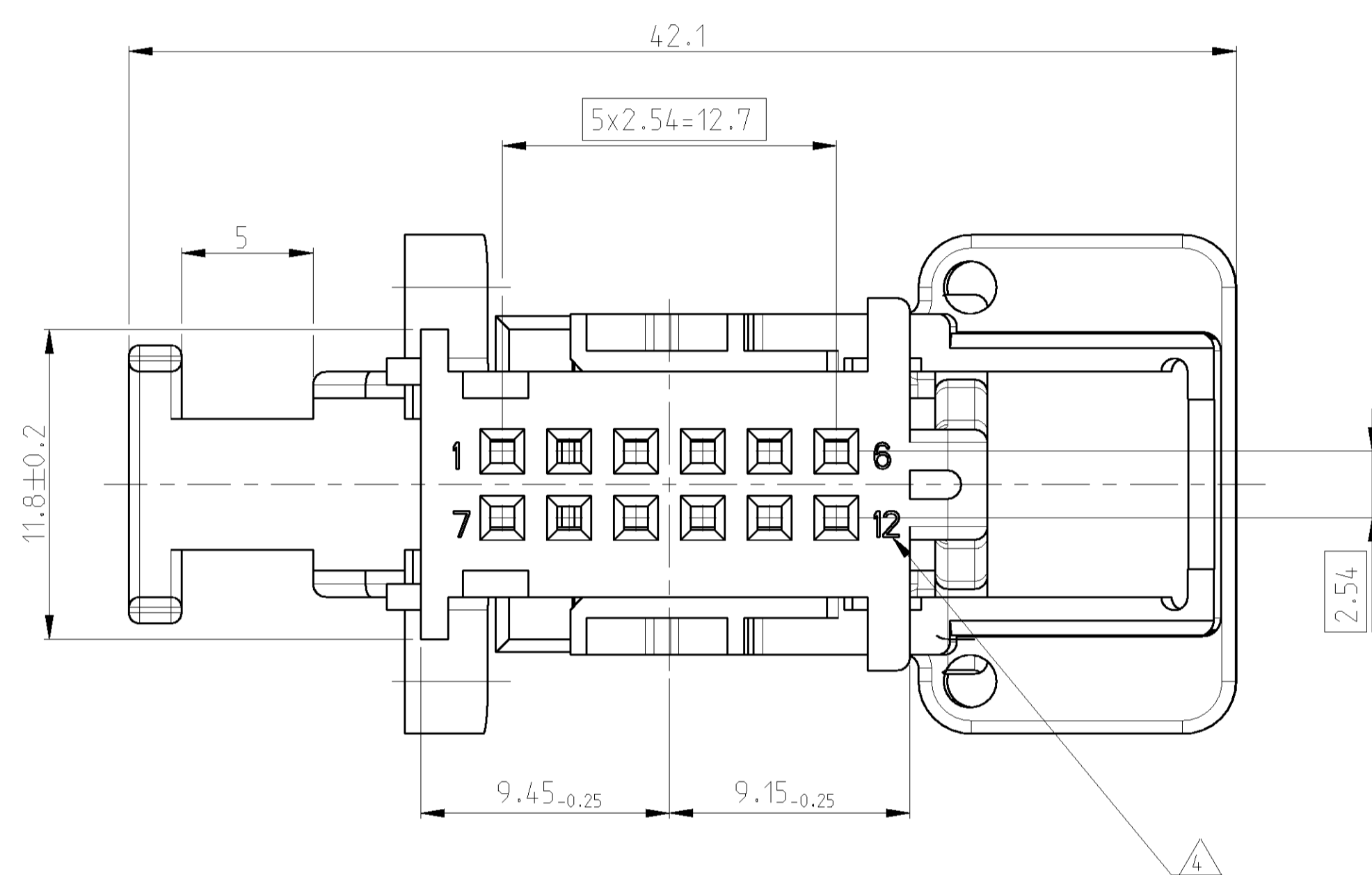


PROJECT NO. A99-52133	LOC A1	DIST -	REVISIONS			
			REV	DATE	BY	APPD
			B2	20JAN2006	MR	VB

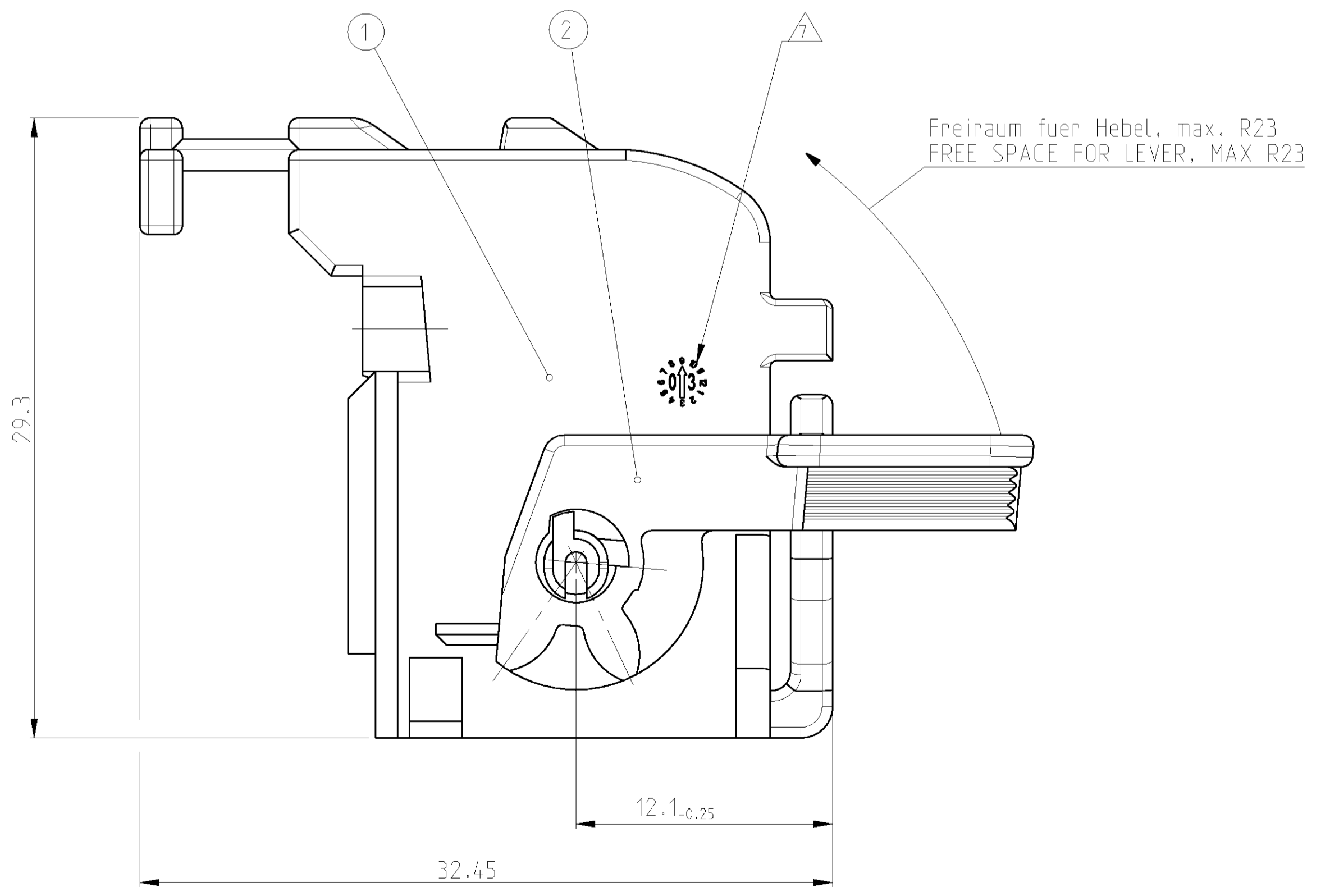
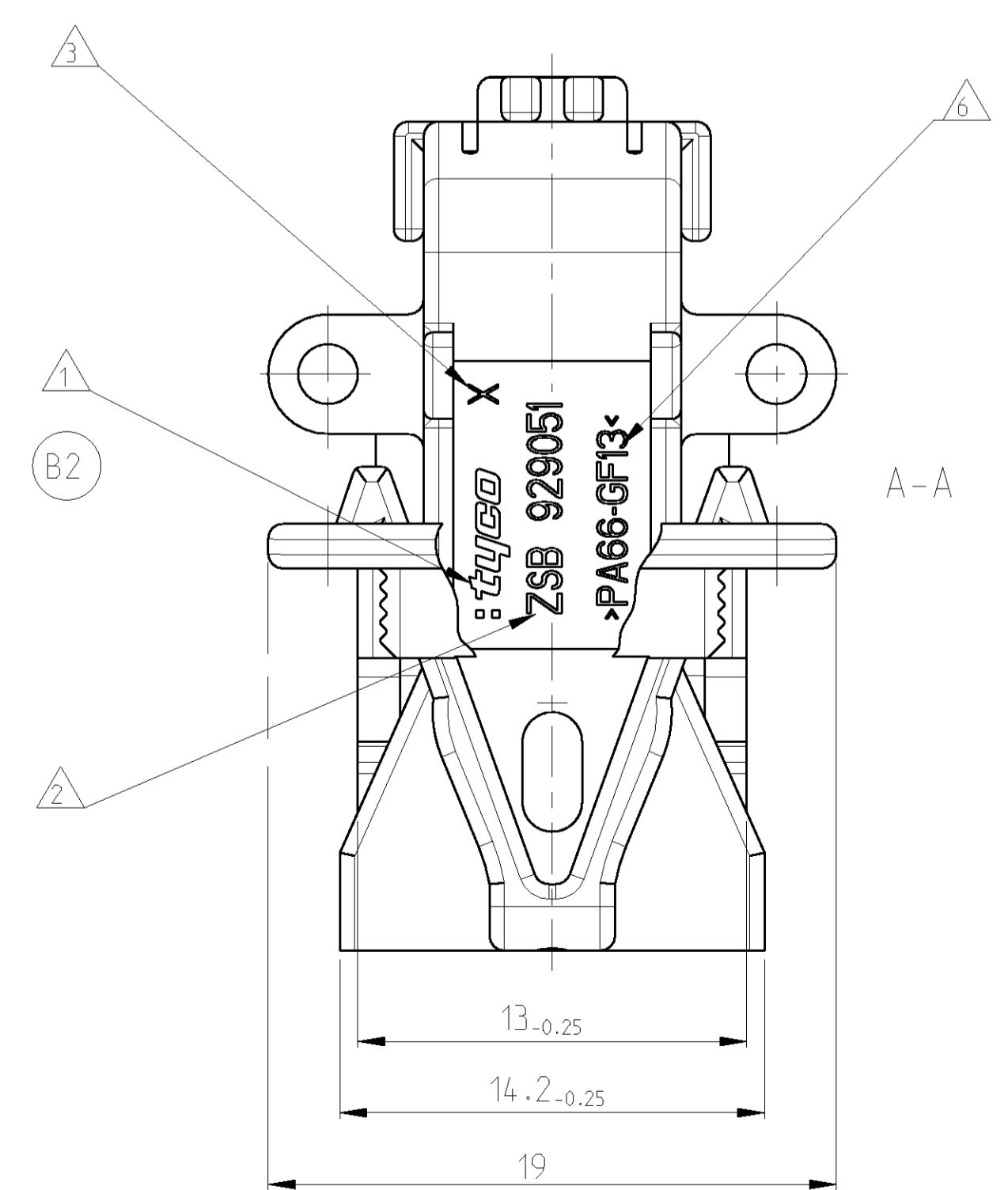
Hebel in Montagestellung  
 LEVER IN MOUNTING POSITION



12POS. CONNECTOR CONTAINS:  
 12pol. Steckverbinder besteht aus:  
 929051 COVER WITH LEVER / Abdeckkappe mit Hebel  
 968473 12POS. MQS REC. HOUSING / 12pol. MQS-Gehäuse  
 COUNTERPARTS:  
 Gegenstücke:  
 967646 12POS. AMPMODU II PIN HEADER / 12pol. AMPMODU II Stiftleiste  
 135505 12POS. AMPMODU II PINHEADER 90° / 12pol. AMPMODU II Stiftleiste 90°  
 OR ACC. TO / oder nach  
 114-18063-091 INTERFACE FOR 12POS. MQS CONNECTOR  
 Schnittstelle für 12pol. MQS Steckverbinder



Anlieferungszustand (Hebel verliersicher)  
 DELIVERY CONDITION (LEVER SAFE AGAINST LOSING)



- NOTES  
 Bemerkungen
- 1 AMP-LOGO OR tyco-LOGO  
AMP-Logo oder tyco-Logo
  - 2 ORDER-NUMBER (WITHOUT SUFFIX ON PART)  
Bestell-Nummer (ohne Nachstrichzahl)
  - 3 REVISIONS-NUMBER OF SINGLE PART  
Werkzeugänderungsindex des Einzelteils
  - 4 CAVITY MARKING  
Kammernumerierung
  - 5 BULK MATERIAL IN CARDBOX  
Schuttgut in Karton
  - 6 MATERIAL MARKING  
Werkstoffkennzeichnung
  - 7 PRODUCTION DATE OF SINGLE PART  
Produktionsdatum des Einzelteils

929051-1	B	-	LEVER / Hebel	1	PBT-GF20	BLACK / schwarz	3.1	2
			COVER / Abdeckkappe	1	PA66-GF13	BLACK / schwarz		1
AMP ORDER NO.	REV	CODING	DESCRIPTION	QTY	MATERIAL	COLOUR SURFACE	WEIGHT [g]	ITEM

DIMENSIONS: mm		TOLERANCES UNLESS OTHERWISE SPECIFIED: 0 PLC ±0.5 1 PLC ±0.5 2 PLC ±0.5 3 PLC ± 4 PLC ± ANGLES ±		MATERIAL see table		FINISH see table		DWN M.Reinhardt 20JAN2006 CWO V. Bergmann 20JAN2006		tyco Electronics AMP GmbH D - 64625 Bensheim	
PRODUCT SPEC 108-18546-1		APPLICATION SPEC 114-18173-1		WEIGHT -		SCALE 5:1		SHEET 1 OF 1		REV B2	
CUSTOMER DRAWING		NAME SHIELD FOR MQS REC. HSG., 12POS.		SIZE A1		CAGE CODE 00779		DRAWING NO. C=929051		RESTRICTED TO	