



**CUSTOMER:** ECOTONE  
**CUSTOMER PN:**  
**UCC PN:** E82D800VST393MCA5T  
**UCC MAXCIM NO.:** 92908

**ELECTRICAL CRITERIA**

CAPACITANCE (120Hz/20°C): 39000  $\mu$ F  
 CAP.TOLERANCE:  $\pm 20\%$   
 RATED VDC 80 V  
 SURGE VDC (30 sec): 100 V  
 MAX. ESR (120Hz/20°C): 6.3 m $\Omega$   
 MAX. IRMS (120Hz/85°C): 19.4 A  
 MAX. DCL (V<sub>DC</sub>/5:00/20°C): 7.065 mA

**MECHANICAL CRITERIA**

MAX. VIBRATION: 10-55Hz 10g  
 TYP. WEIGHT: 273 grams

**OPERATING CRITERIA**

MAX. TEMPERATURE: +85 °C  
 MIN. TEMPERATURE: -40 °C  
 LOAD LIFE (V<sub>DC</sub>+I<sub>RMS</sub>/85°C): 2000 Hrs  
 MAX.  $\Delta$  CAP. (measured value):  $\pm 20\%$   
 MAX. ESR (specified value): +200 %  
 MAX. DCL (V<sub>DC</sub>/5:00/20°C): 7.065 mA  
 SHELF LIFE (85°C): 1000 Hrs  
 MAX.  $\Delta$  CAP. (measured value):  $\pm 20\%$   
 MAX. ESR (specified value): +150 %  
 MAX. DCL (V<sub>DC</sub>/5:00/20°C): 7.065 mA

**IRMS FREQUENCY MULTIPLIERS**

V <sub>DC</sub>	50Hz	120Hz	300Hz	1kHz	10kHz	100kHz
6.3-50	0.95	1.00	1.03	1.05	1.08	1.08
63-100	0.92	1.00	1.07	1.12	1.19	1.20
160-250	0.81	1.00	1.17	1.32	1.45	1.50
315-500	0.77	1.00	1.16	1.30	1.41	1.43

**IRMS AMBIENT MULTIPLIERS**

45°C	60°C	70°C	85°C
1.73	1.50	1.32	1.00

**COMMENTS**

RoHS Compliant

---



---



---



---



---



---



---



---

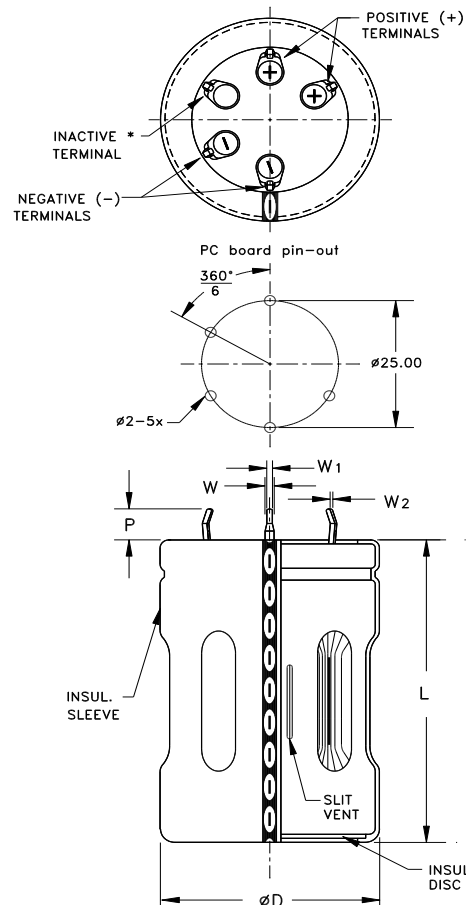
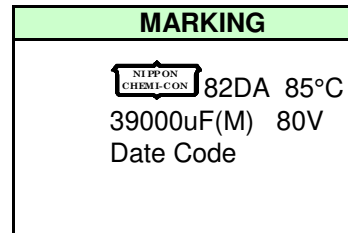


---



---

DIMENSIONAL CRITERIA			
X	mm	in	
$\varnothing$ D	50.0	- NA	+ 1.0
L	105.0	- 2.0	+ 2.0
P	3.5	- 1.0	+ 1.0
W	1.5	- 0.2	+ 0.2
W <sub>1</sub>	1.0	- 0.1	+ 0.1
W <sub>2</sub>	1.0	- 0.1	+ 0.1



\* Inactive terminal for mechanical support only.

TDS NO.: TDS-09-0337  
 AUTHOR: LMI  
 DATE: 23-APR-2009