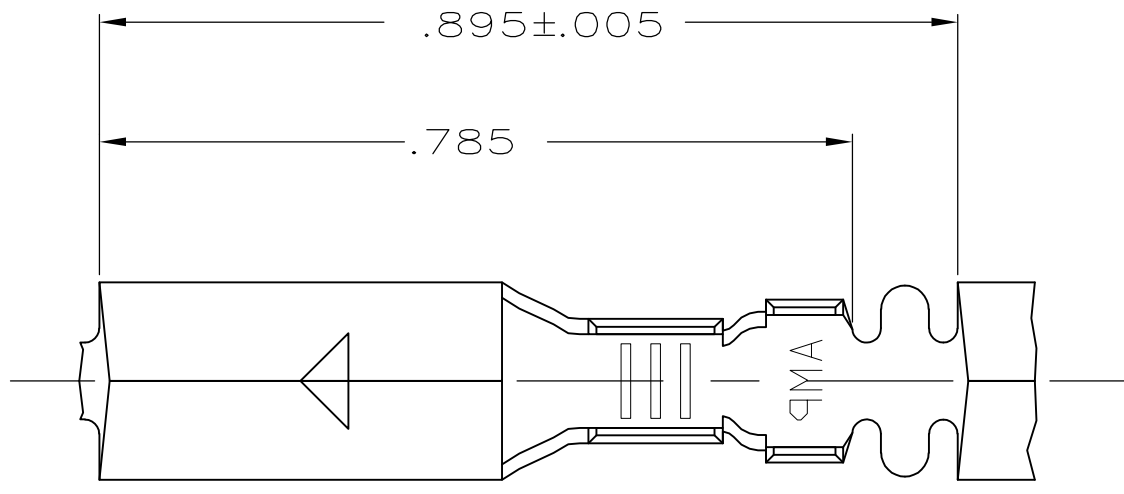
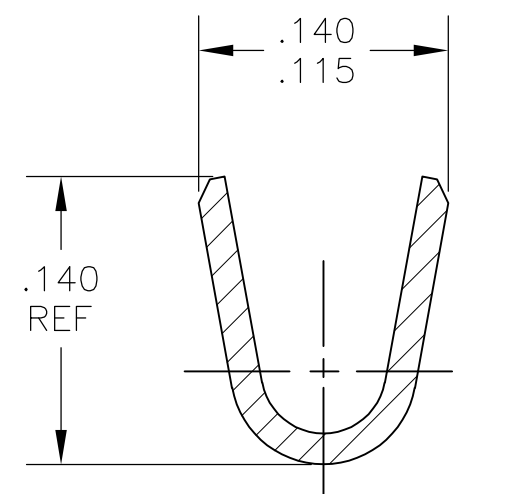
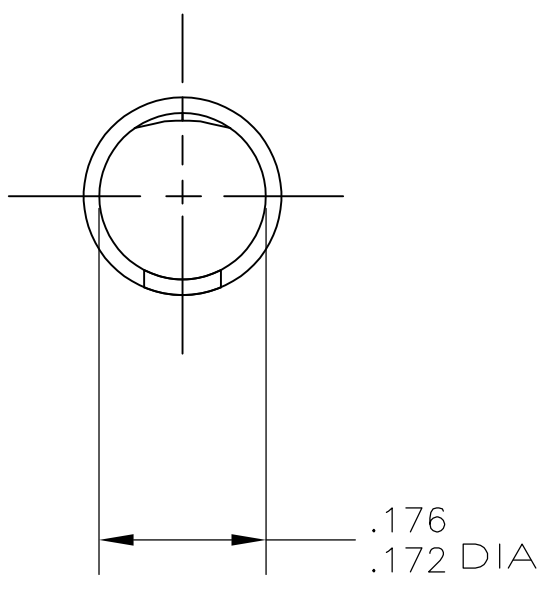
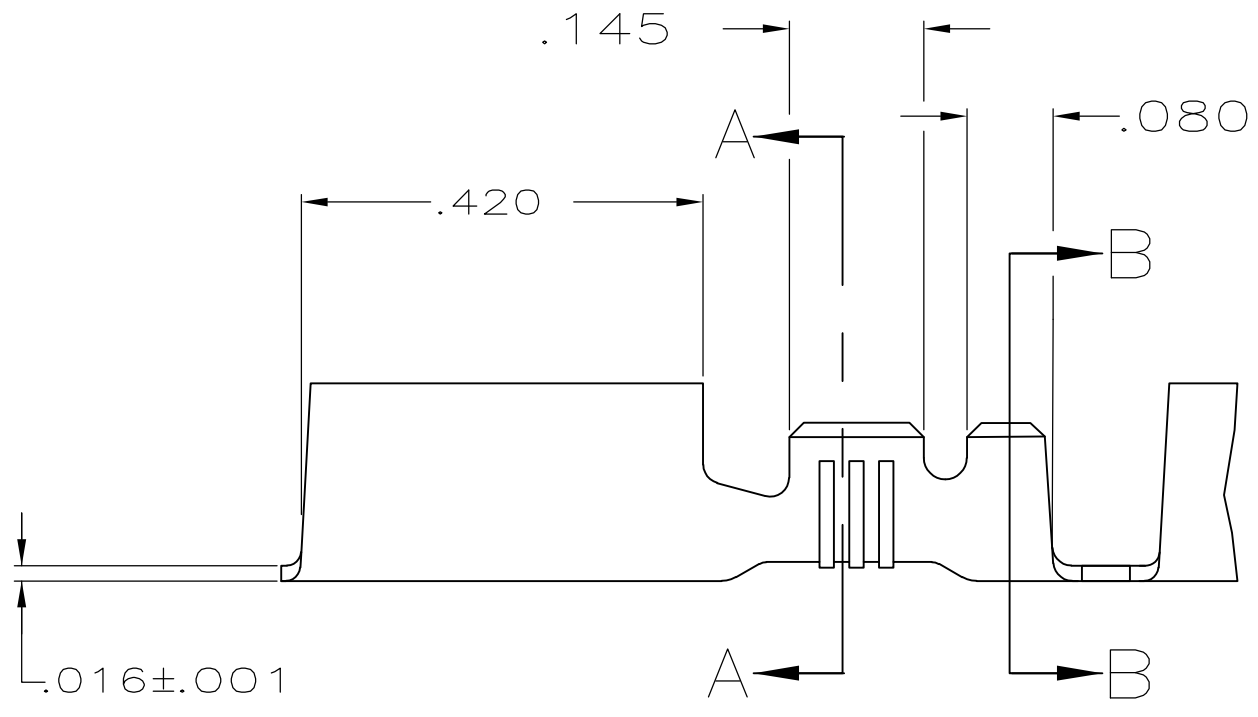


THIS DRAWING IS UNPUBLISHED. RELEASED FOR PUBLICATION
 © COPYRIGHT - By - ALL RIGHTS RESERVED.

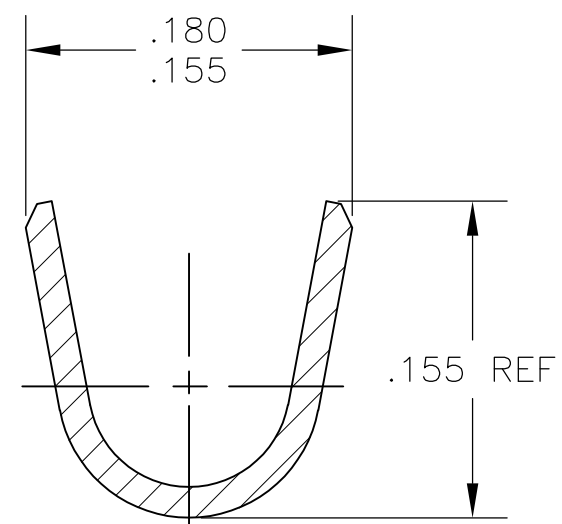
LOC	DIST	REVISIONS			
P	LTR	DESCRIPTION	DATE	DWN	APVD
AF	50	S2	REVISED PER ECO-11-004917	11MAR11	RK HMR



- 1 CONTINUOUS STRIP ON REELS
- △2 TIN PL .000080 MIN PER MIL-T-10727
- △3 .000080 MIN TIN PLATE PER MIL-T-10727 OVER .000050 MIN NICKEL UNDERPLATE PER QQ-N-290.
- △4 .000030 MIN GOLD PLATE OVER .000050 MIN NICKEL UNDERPLATE PER QQ-N-290.
- △5 .000200 MIN SILVER OVER .000050 MIN NICKEL UNDERPLATE PER QQ-N-290
- 6 WIRE SIZE IS #18-#14 AWG
- 7 INSULATION RANGE IS .090-.125 DIA
- △8 PREPRODUCTION - FASR REQ
- △9 PRELIMINARY - NOT FOR PRODUCTION
- △10 OBSOLETE PARTS: OBSOLETE CIS STREAMLINING PER D.RENAUD/D.SINISI



SECTION A-A
SCALE 10:1



SECTION B-B
SCALE 10:1

△10 OBSOLETE	△5	△9	60798-8
	△4	△8	60798-7
	△3		60798-6
	△2		60798-4
	-		60798-2
	FINISH		PART NO.

TYPE	WIDTH	STRIP LENGTH ±.015	TYPE	WIDTH	±.002 HEIGHT	WIRE
F OR O	.140	.210	F	.100	.077	14
					.067	16
					.061	18
INSUL BARREL CRIMP			WIRE BARREL CRIMP			

THIS DRAWING IS A CONTROLLED DOCUMENT.

DWN P FORTNEY	12/13/88	STE TE Connectivity
CHK MS FEHER	6/14/89	
APVD D DECKER	6/14/89	
MATERIAL #4 HARD BRASS	FINISH SEE TABLE	NAME RECEPTACLE, SHUR PLUG, .180 DIA
DIMENSIONS: INCHES		SIZE A2
TOLERANCES UNLESS OTHERWISE SPECIFIED:		CAGE CODE 00779
0 PLC ± -		DRAWING NO C=60798
1 PLC ± -		RESTRICTED TO -
2 PLC ± -		SCALE 5:1
3 PLC ± .015		SHEET 1 of 1
4 PLC ± -		REV S2
ANGLES ± -		
WEIGHT -		
CUSTOMER DRAWING		