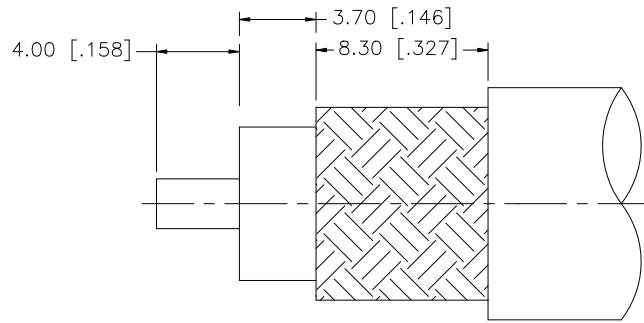
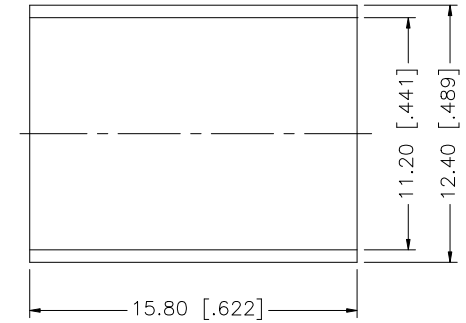
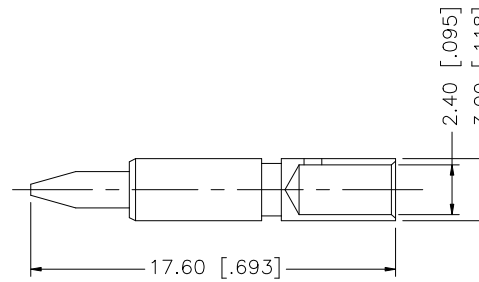
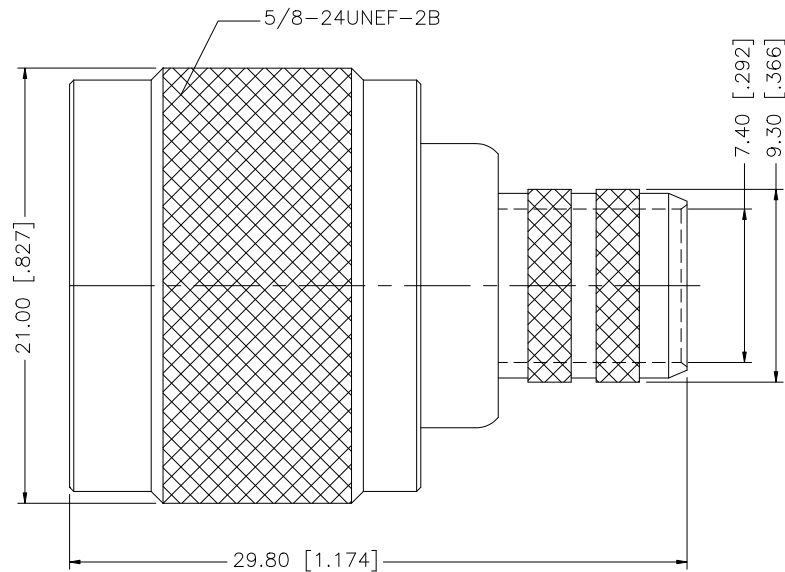


REV.	DATE	DESCRIPTION
A	01/30/04	UPDATE DRAWING FORMAT
B	05/22/05	MODIFY PLATING SPEC
C	07/08/07	REVISE STRIPPING DIMS AND FERRULE



RECOMMENDED
CABLE STRIPPING DIM'S



NOTE:

1. CRIMPED FERRULE HEX CRIMP SIZE .429"
2. CRIMPED CONTACT PIN HEX CRIMP SIZE .100"

REV.	DESCRIPTION	MATERIAL	FINISH	QTY	APPROVALS	DATE	Amphenol Connex			
8							N CRIMP PLUG (FOR RG-214/U CABLE)			
7										
6										
5	FERRULE	COPPER	NECOTE	1						
4	CONTACT PIN	BRASS	GOLD	1						
3	INSULATOR	TEFLON	NATURAL	1			PART NO. 172166			
2	BARREL	BRASS	NEXCOTE	1			DWG. NO. 172166.DWG			
1	BODY	BRASS	NEXCOTE	1			REV. C SIZE A SCALE NA			
<small>UNLESS OTHERWISE SPECIFIED DIMENSIONS ARE IN MILLIMETERS. DIMENSIONS IN [] ARE IN INCHES AND FOR CUSTOMER REFERENCE ONLY.</small> <small>UNLESS OTHERWISE SPECIFIED TOLERANCES FOR MILLIMETERS ARE: 0.5 - 8mm ± 0.20mm 8 - 30mm ± 0.40mm 30 - 120mm ± 0.50mm</small> <small>UNLESS OTHERWISE SPECIFIED TOLERANCES FOR INCHES ARE: .020 - .315 = ± 0.007" .315 - 1.180 = ± 0.015" 1.180 - 4.724 = ± 0.020"</small>					<small>DO NOT SCALE DRAWING</small> C:/172/172166.DWG					