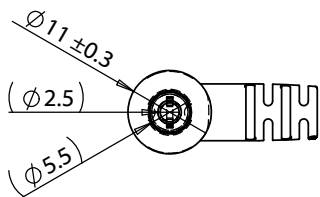
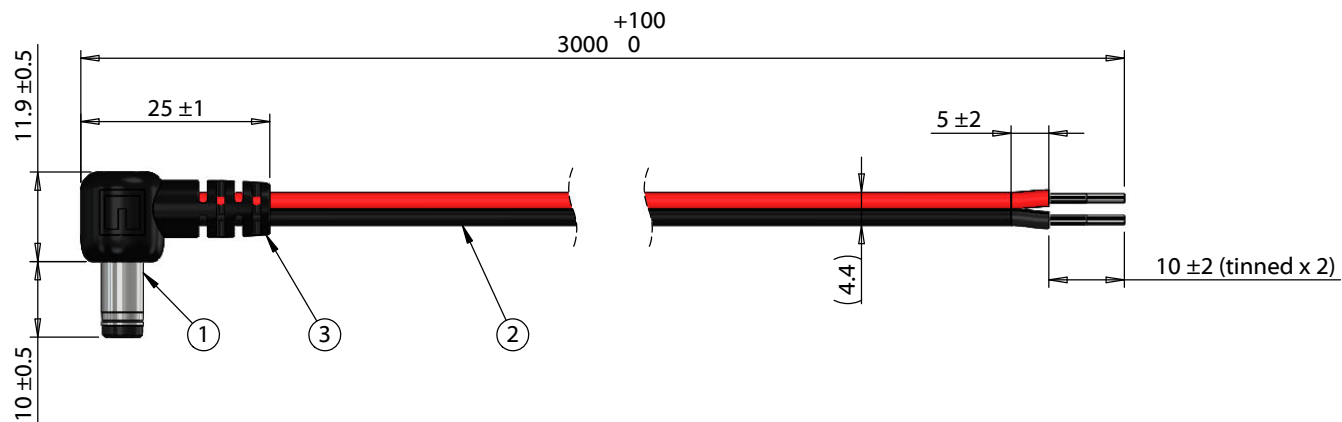


ITEM NO.	PART NUMBER	DESCRIPTION	QTY.	COMPONENT NOTES
1	50-00129	Connector, dc plug, 5.5x2.5xL18.5 mm, molding style, spring contacts	1	
2	30-00415	Wire, 2C TS, 18 AWG, UL2468, 300V, 80°C, 4.4 mm, VW-1, PVC, red and black	1	
3	24-00006	Overmold, PVC, black	1	PVC, black



**Notes:**

Cables individually tied and bundled in groups of 10

Functionally equivalent components may be substituted

Cable rated for 48 V, 7 A

Wiring Diagram	
50-00129	wire color
center	red
sleeve	black

Revision:	Date:	Description:	Prepared: <b>MP</b> <small>Digitally signed by MP Date: 2022.11.01 09:23:15 -0700</small>	Notes:	<h1>TENSILITY</h1> <p>tel 1.541.323.3228 800 877.670.7118 fax 1.541.323.4202 web tensility.com</p>
A	11/1/2022	Initial release	Verified: <b>JD</b> <small>Digitally signed by JD Date: 2022.11.09 15:21:13 -0800</small>	RoHS compliant	
			Dimensions are in millimeters. Tolerances: X: ± 0.5 mm X.X: ± 0.3 mm X.XX: ± 0.05 mm	Function test: no open, no short circuit, no intermittent	
				Description: Cable, 3000 mm, 5.5x2.5x10 mm 90° 50-00129 dc plug to 10 mm tinned, 18 AWG, 30-00415 R-B wire	
				Size: A	Part number: 10-05224
				Scale: 1:1	Sheet 1 of 1

5



4

3

2

1