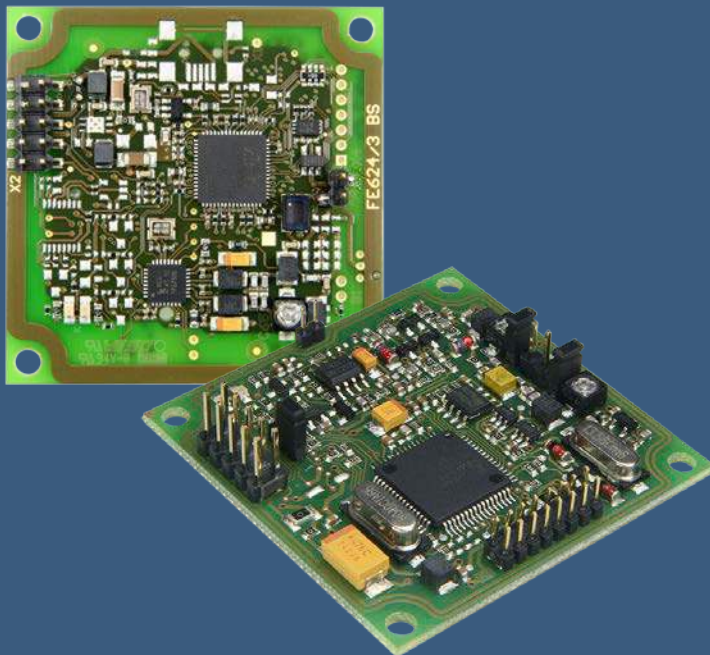


Multi-tag Reader Modules ID CPR (13.56 MHz)



FEATURES

- Also available as USB variant
- Data rates up to 847 kBit/s
- Low power consumption
- Command Queue for explicit reduction of communication cycles between host and reader module
- Supports NFC applications



Order description: ID CPR40.0x / ID CPR.M02.VP/AB-x

Special advices:

- The higher operation speed is caused by the so-called „Command Queue“. With this Command Queue a sequence of commands can be sent to the reader module within one poll.

The result is an explicit reduction of communication cycles between host and reader.

- Beside the six reader modules ID CPR40.0x, the ISO 15693 / ISO14443-reader modules ID CPR.M02.VP/AB-B and -BA resp. ID CPR.M02.VP/AB-C and -CA are available.

Reader modules with integrated antenna

	ID CPR40.00-A	ID CPR40.00-CDUSB	ID CPR.M02.VP/AB-B	ID CPR.M02.VP/AB-C
Dimensions	50 x 50 x 14 mm	50 x 50 x 14 mm	50 x 50 x 14 mm	50 x 50 x 14 mm
RS232-TTL interface		x	x	x
Data/Clock interface		x	x	x
Wiegand interface		x	x	x
RS232 interface	x			
USB interface		x		
Supply voltage	5V	5V	5V	5V
ISO 14443-A/-B	x	x	x	x
ISO 14443 Part 4 Support	x	x	TCL Firmware	TCL Firmware
Mifare classic read / write	x	x	x	x
ISO 15693			x	x
I-CODE1			x	
Data rate	106-847 kBit/s	106-847 kBit/s	106 kBit/s	106 kBit/s
NFC compatibility	x	x	x	x
Current consumption	130 mA	130 mA	300 mA	300 mA
Read 64 Byte mifare classic	2,6 ms	2,6 ms	4,1 ms	4,1 ms
RF transmitting power	100 mW	100 mW	250 mW	250 mW
Command Queue	x	x		

Accessories:

- ID ISC.ANT40/30 External antenna 40 mm x 30 mm
- ID ISC.ANT100/100 External antenna 100 mm x 100 mm
- ID NET.5V 5V power supply
- ID CO.RS232/LVTTL-A Converter LVTTTL to RS232
- ID CO.RS232/TTL-A Converter TTL to RS232
- ID CAB.RS-A Cable for RS232/485 and power supply
- ID CAB.A-A Adapter cable, 10 cm

Note: Errors and technical alterations reserved.
The information is given in April 2017.

Not recommended for new design.

Order description: ID CPR40.0x / ID CPR.M02.VP/AB-x

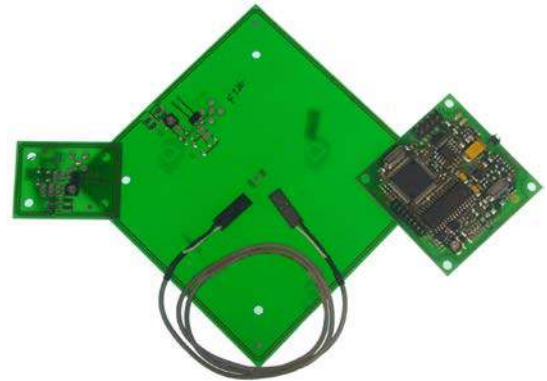
Reader modules for operation with external antennas

	ID CPR40.01-A	ID CPR40.01-CDUSB	ID CPR.M02.VP/AB-BA	ID CPR.M02.VP/AB-CA
Dimensions	50 x 50 x 14 mm	50 x 50 x 14 mm	50 x 50 x 14 mm	50 x 50 x 14 mm
RS232-TTL interface		x	x	x
Data/Clock interface		x	x	x
Wiegand interface		x	x	x
RS232 interface	x			
USB interface		x		
Supply voltage	5V	5V	5V	5V
ISO 14443-A/-B	x	x	x	x
ISO 14443 Part 4 Support	x	x	TCL Firmware	TCL Firmware
Mifare classic read / write	x	x	x	x
ISO 15693			x	x
I-CODE1			x	
Data rate	106-847 kBit/s	106-847 kBit/s	106 kBit/s	106 kBit/s
NFC compatibility	x	x	x	x
Current consumption	130 mA	130 mA	300 mA	300 mA
Read 64 Byte mifare classic	2,6 ms	2,6 ms	4,1 ms	4,1 ms
RF transmitting power	100 mW	100 mW	250 mW	250 mW
Command Queue	x	x		

Standard conformity

Radio approval

Europe	EN 300 330
USA	FCC 47 CFR Part 15*
EMC	EN 301 489
Safety	EN 60950
Health	EN 50364



*only for ID CPR.M02.VP/AB-BA and -CA

As external antennas, two 50Ω antennas
ID ISC.ANT40/30 and ID ISC.ANT100/100 are available.

Note: Errors and technical alterations reserved.
The information is given in April 2017

Not recommended for new design.