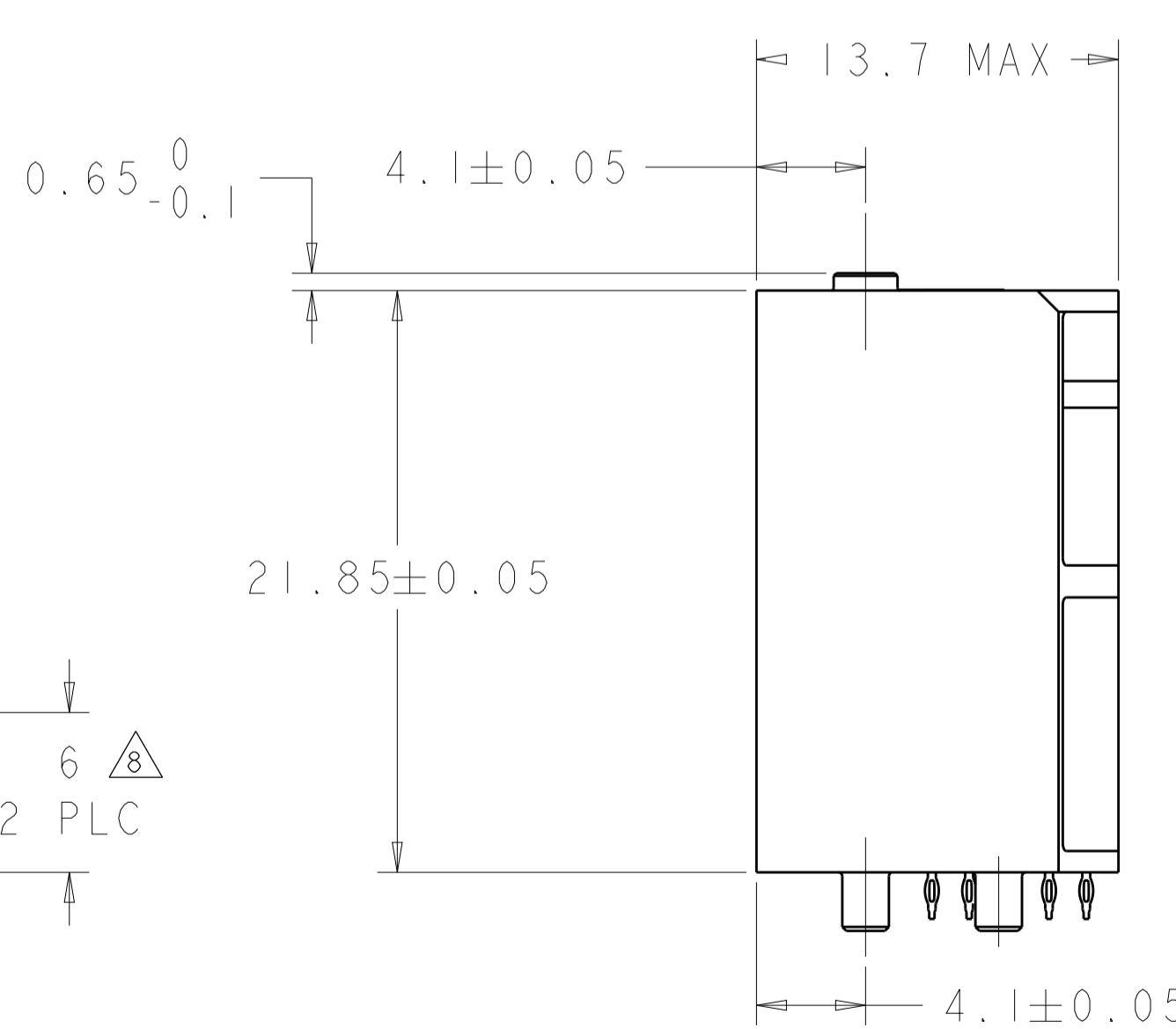
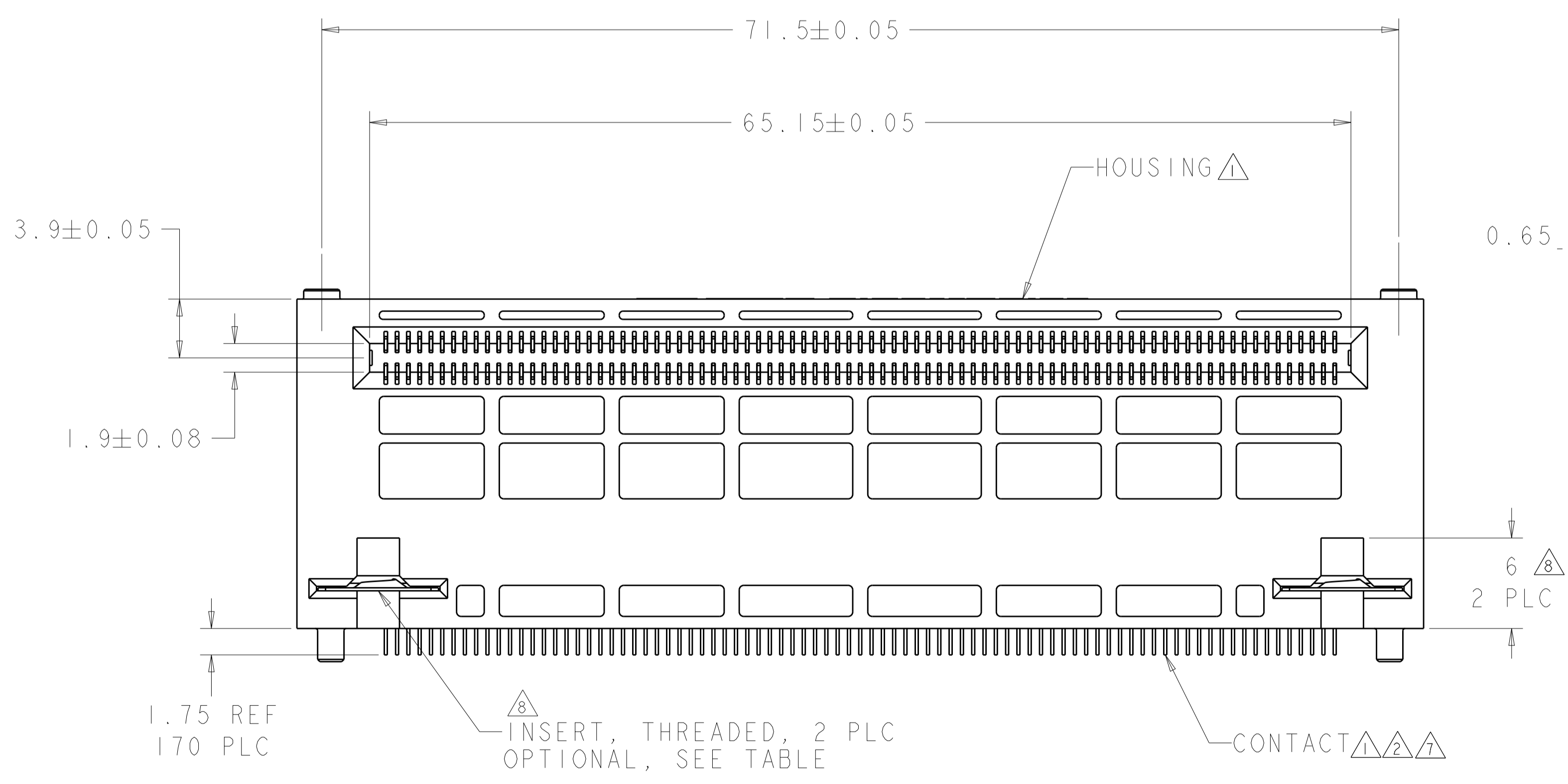
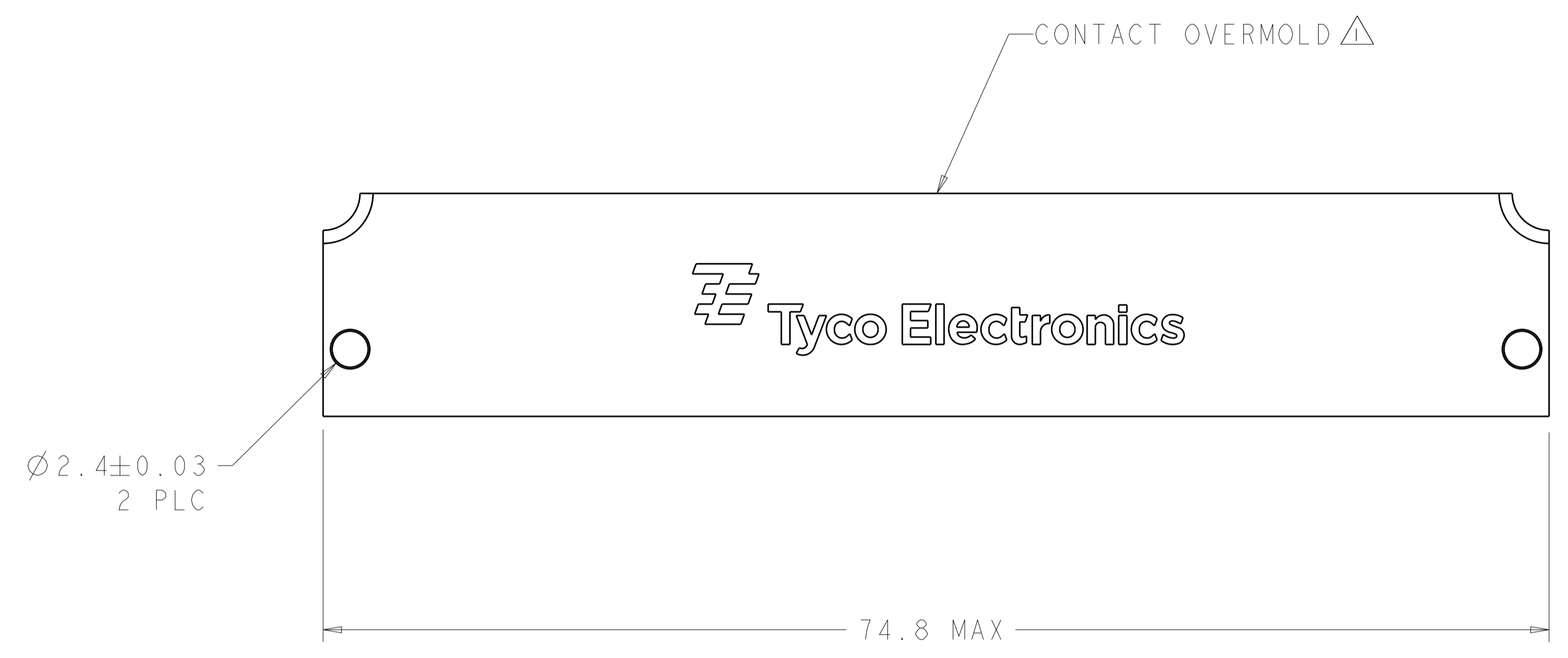


LOC	DIST	REVISIONS					
		P	LTN	DESCRIPTION	DATE	DWN	APVD
AG	00	A		A RELEASE	24OCT2019	SY	HL



- △ HOUSING: LCP, UL94V-0 RATED
CONTACT OVERMOLD: POLYESTER, PBT,
30% GLASS FIBER REINFORCED
CONTACT: COPPER ALLOY
- △ CONTACT FINISH: 1.27 MICROMETER MIN TIN-LEAD OVER
1.27 MICROMETER MIN NICKEL ON TAIL
SURFACE TREATMENT OVER 0.76 MICROMETER MIN GOLD OR 0.64 MICROMETER
MIN PALLADIUM-NICKEL OVER 1.27 MICROMETER MIN NICKEL ON MATING AREA
- △ MANUFACTURING TOLERANCE FOR $\varnothing 0.40$ REF FINISHED HOLE WITH Sn Pb PLATING:
DRILLED HOLE = $\varnothing 0.50 \pm 0.02$
COPPER PLATING = 0.025-0.050
Sn Pb PLATING = 0.0038-0.0124
OR
 $\varnothing 0.425$ REF FINISHED HOLE WITHOUT Sn Pb PLATING
DRILLED HOLE = $\varnothing 0.50 \pm 0.02$
COPPER PLATING = 0.025-0.050 WITH EITHER
OSP = 0.0002-0.0005 OR
IMMERSION Ag = 0.0001 MIN OR
IMMERSION Au/Ni = 0.0001-0.0005 AU / 0.004-0.0076 Ni
- △ DESIGN WILL ACCEPT MODULES THAT MEET THE REQUIREMENTS
OF PICMG AMC.0 RI.0 ADVANCED MEZZANINE CARD CONNECTOR
- △ SIGNAL GROUND VIAS, 28 PLACES, PCB ONLY, NOT
USED IN CONNECTOR
- △ DATUM -F- AND BASIC DIMENSION ESTABLISHED BY
CUSTOMER'S FIDUCIALS
- △ CONTACT FINISH: 1.27 MICROMETER MIN TIN OVER
1.27 MICROMETER MIN NICKEL ON TAIL
SURFACE TREATMENT OVER 0.76 MICROMETER MIN GOLD OR 0.64 MICROMETER
MIN PALLADIUM-NICKEL OVER 1.27 MICROMETER MIN NICKEL ON MATING AREA
- △ MOUNTING SCREW REQUIREMENTS: CUSTOMER SUPPLIED M2.5 X 0.45 8mm LONG
LENGTH DETERMINED BY: PCB THICKNESS 2.4 ± 0.2 , WASHER THICKNESS 0.9 ± 0.3
CHANGES IN PCB AND/OR WASHER THICKNESS MAY EFFECT SCREW LENGTH.
MAXIMUM ALLOWABLE TORQUE, 2.0 Kg/cm

7.0	2	YES	△	△	3-1367703-2
7.0	2	YES	△	△	3-1367703-1
7.0	2	NO	△	△	2-1367703-2
7.0	2	NO	△	△	2-1367703-1
3.0	1	YES	△	△	1-1367703-2
3.0	1	YES	△	△	1-1367703-1
3.0	1	NO	△	△	1367703-2
3.0	1	NO	△	△	1367703-1
"A"	SHEET	INSERTS	FINISH	PART NUMBER	

THIS DRAWING IS A CONTROLLED DOCUMENT.

DWN: P. KERLIN 18FEB2005
CHK: E. BRIGHT 18FEB2005
APVD: E. BRIGHT 18FEB2005

TE Connectivity

NAME: AMC CONNECTOR, STYLE B+

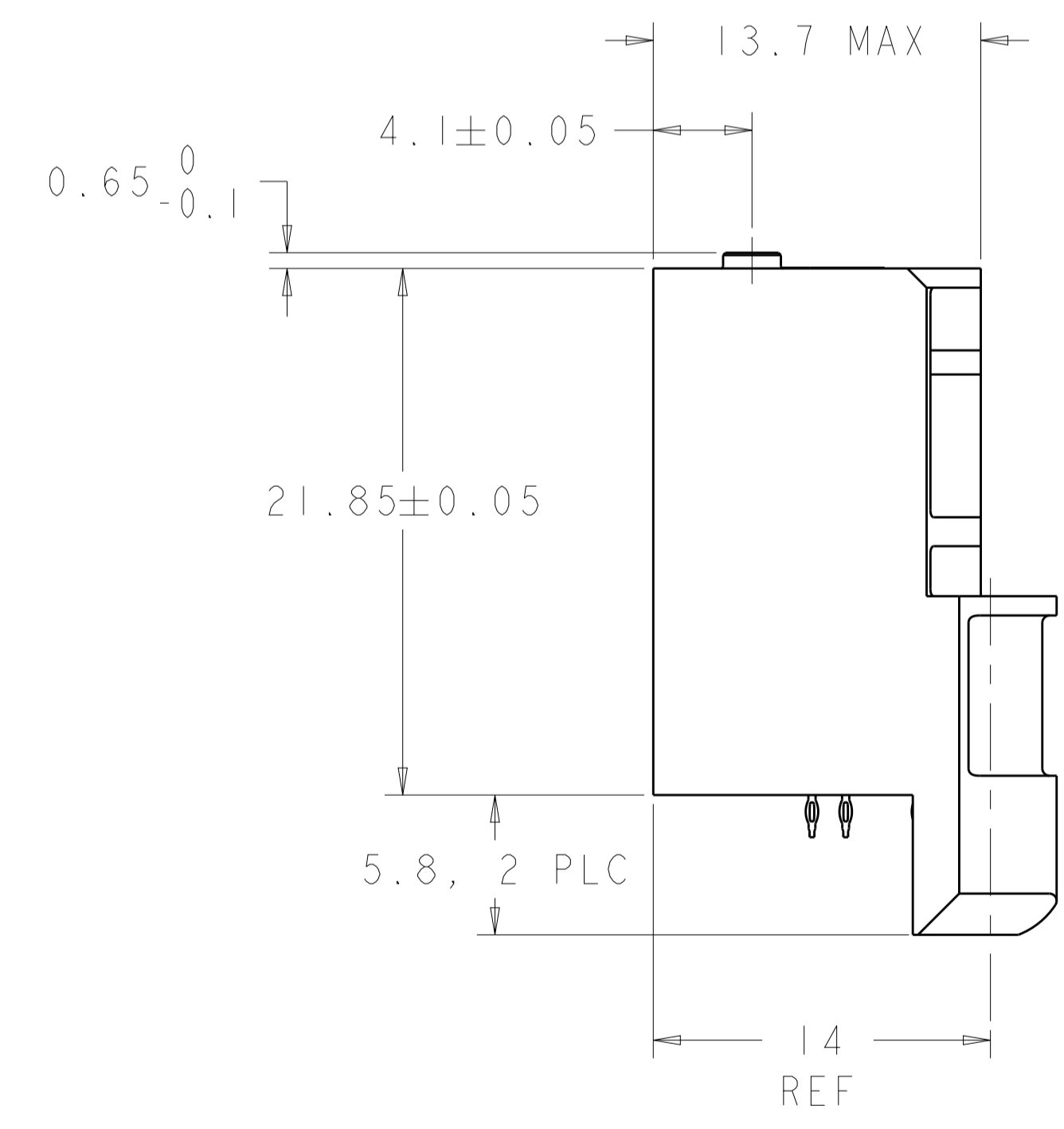
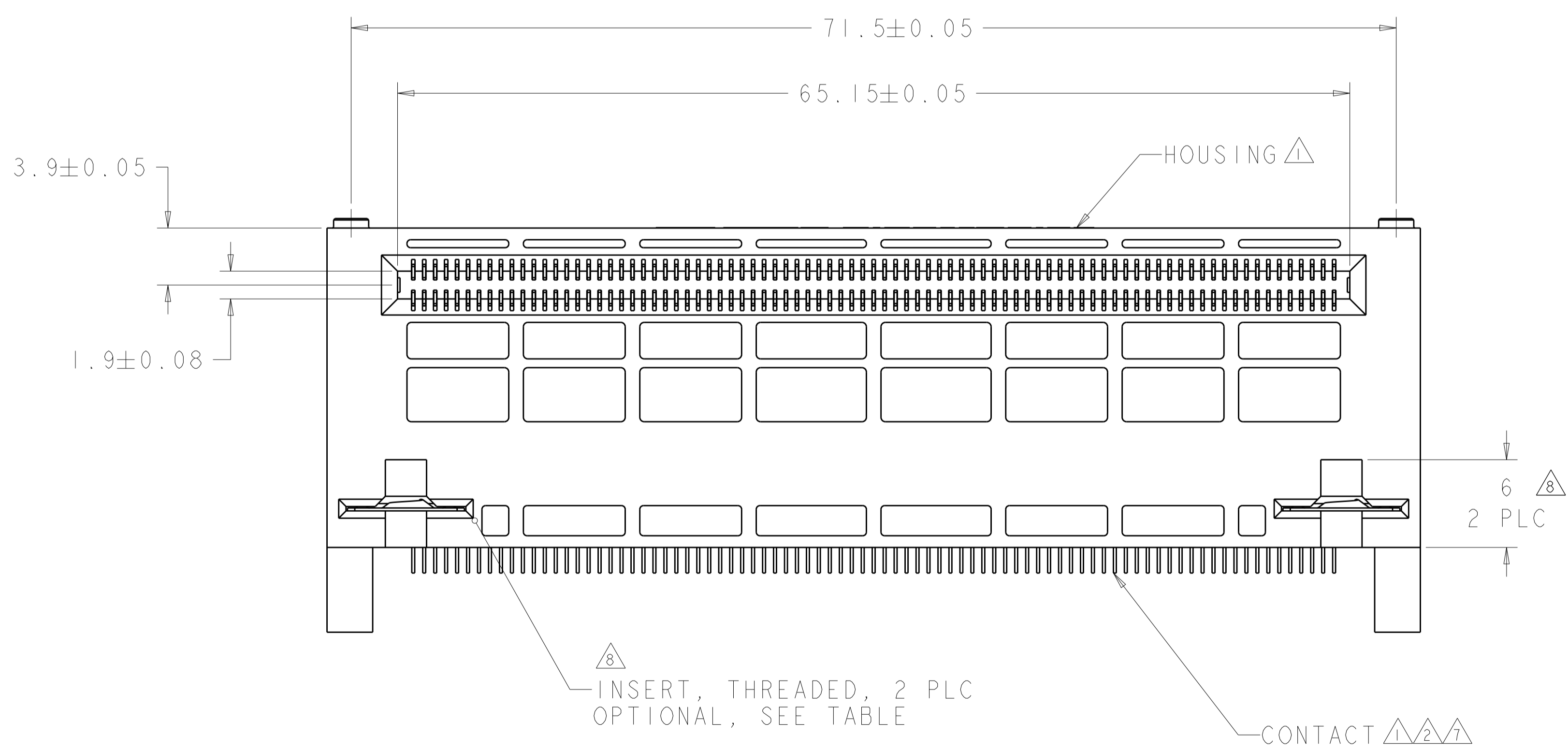
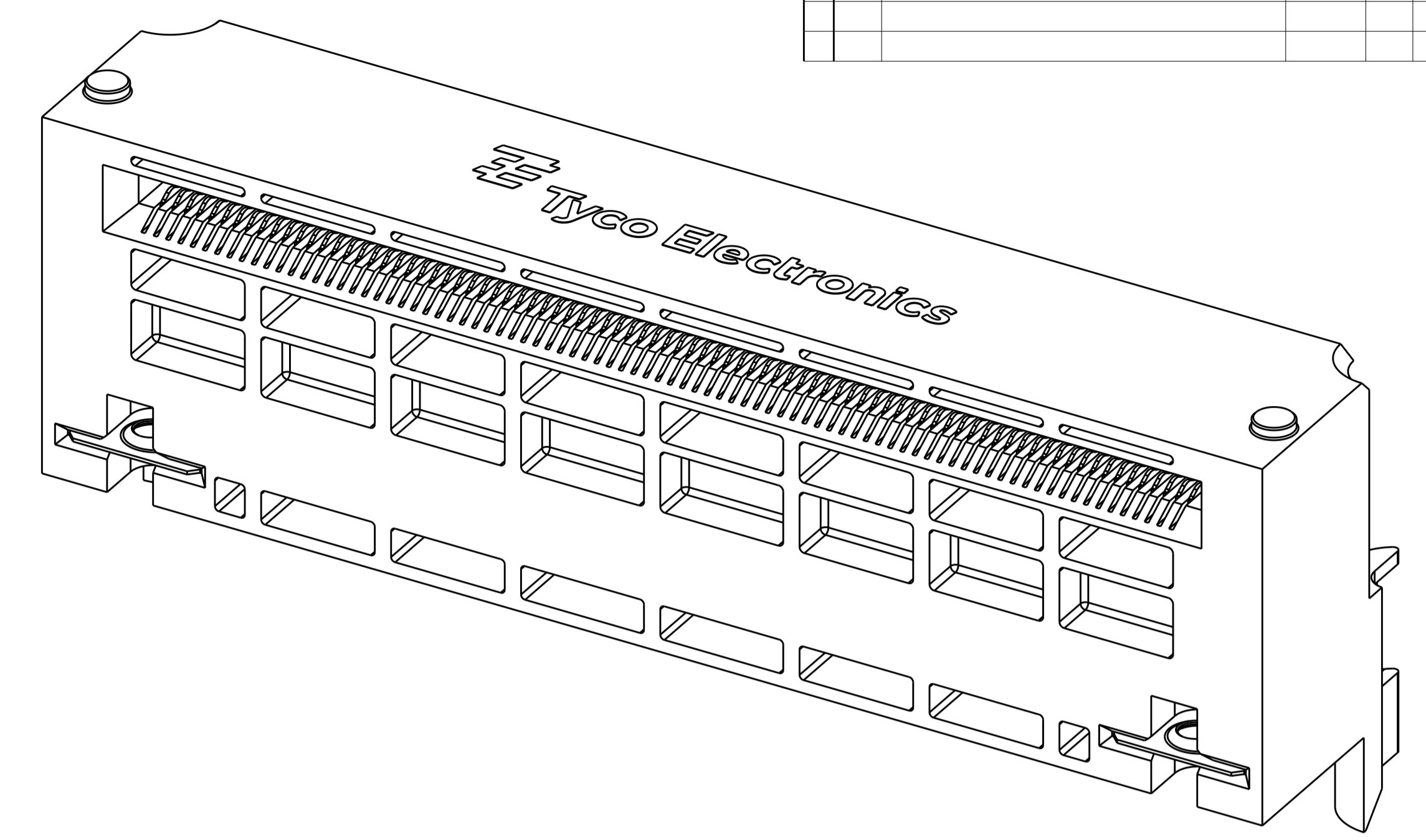
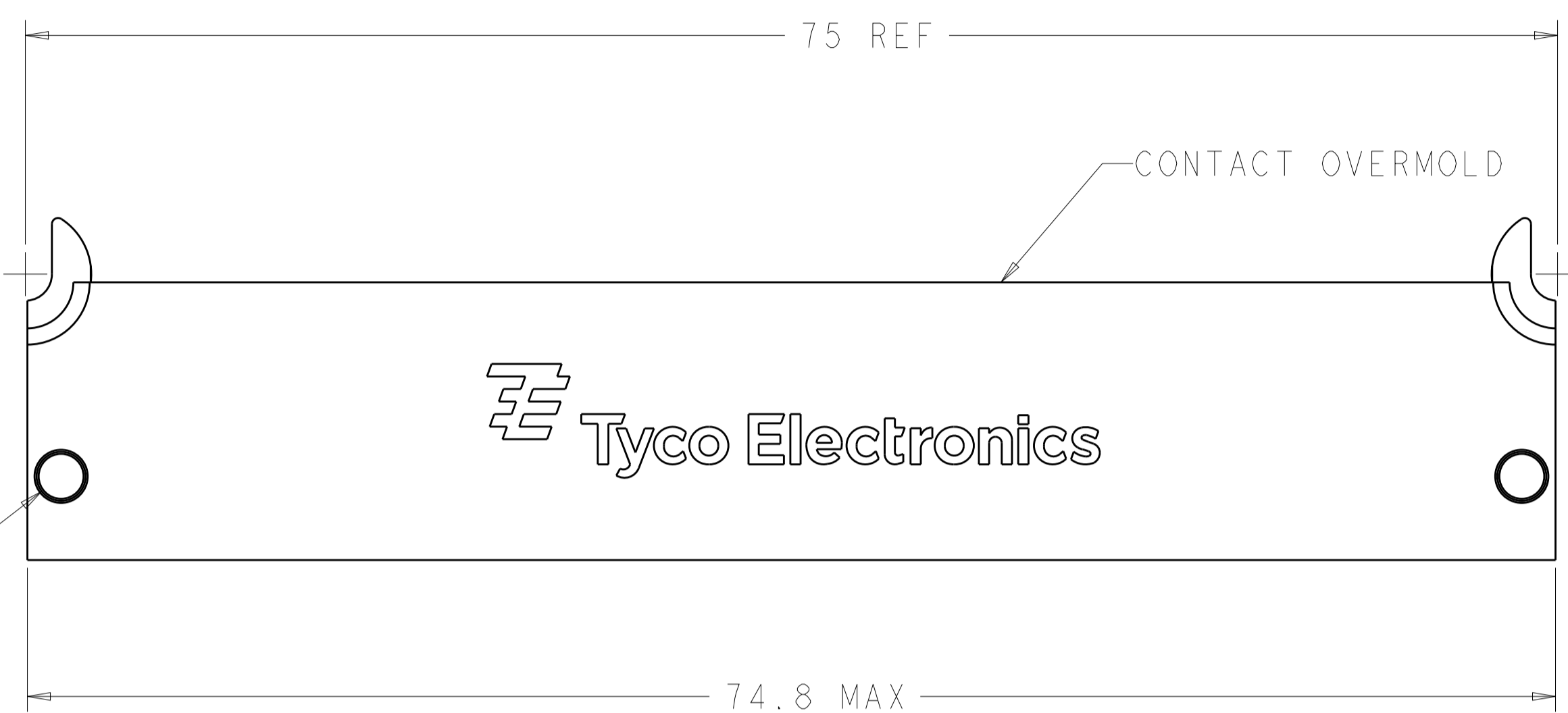
PRODUCT SPEC: 108-2277
APPLICATION SPEC: 114-13181

SIZE: A1
CAGE CODE: 00779
DRAWING NO: 1367703

RESTRICTED TO: RESTRICTED CUSTOMER

SCALE: 4:1
SHEET: 1 OF 3
REV: A

LOC		DIST		REVISIONS			
AG	00	P	LTN	DESCRIPTION	DATE	DMN	APVD
				SEE SHEET 1			

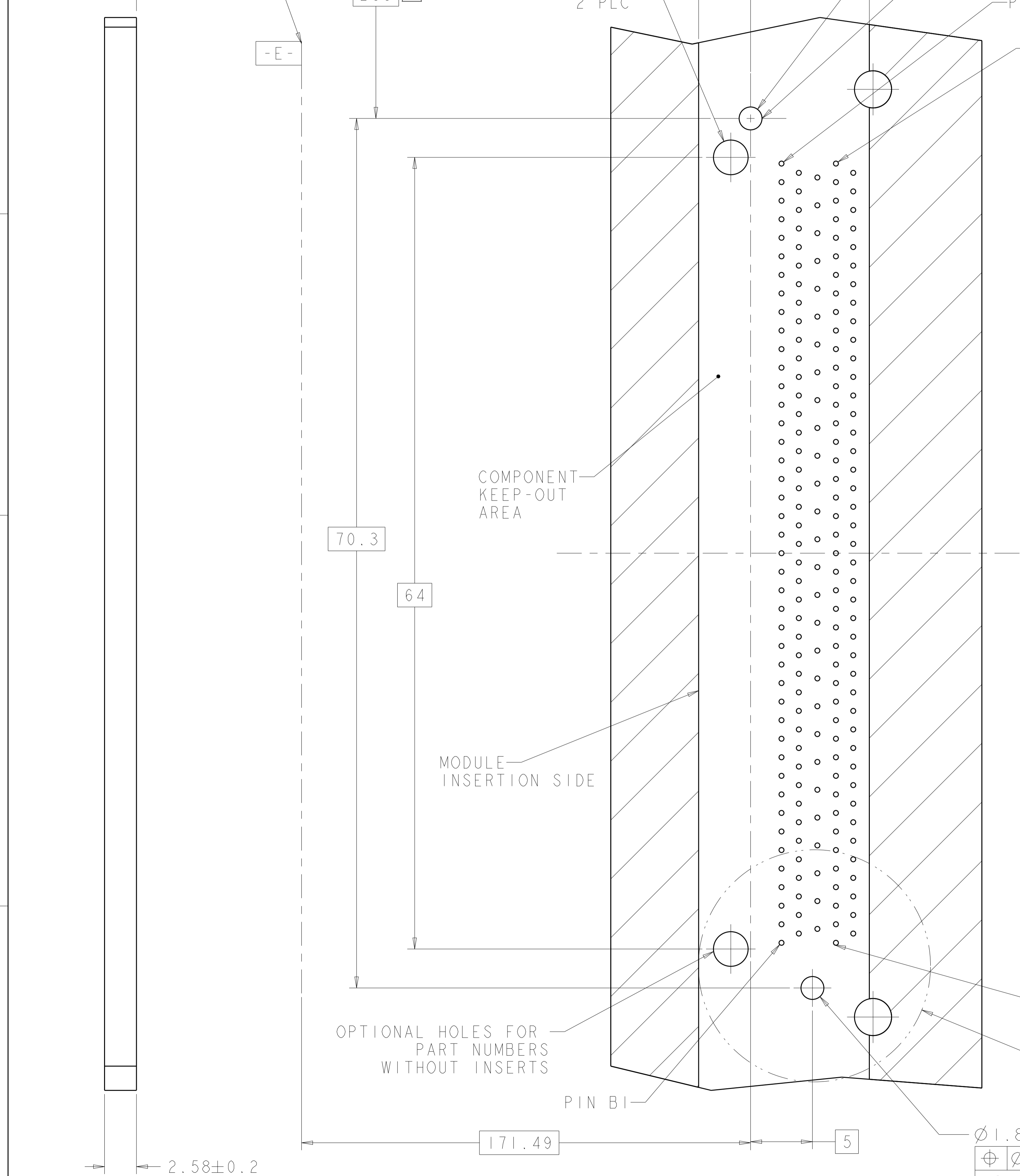


THIS DRAWING IS A CONTROLLED DOCUMENT.		DMN P. KERLIN 18FEB2005	 TE Connectivity	NAME AMC CONNECTOR, STYLE B+
DIMENSIONS:		CHK E. BRIGHT 18FEB2005		
TOLERANCES UNLESS OTHERWISE SPECIFIED:		APVD E. BRIGHT 18FEB2005		
mm		PRODUCT SPEC		
		108-2277	SIZE	RESTRICTED TO
MATERIAL		APPLICATION SPEC	114-13181	A100779C=1367703
FINISH		WEIGHT	RESTRICTED CUSTOMER	SCALE 4:1 SHEET 2 OF 3 REV A

LOC	DIST	REV	DATE	BY	APPD
AG	00				

REVISIONS			
NO.	DESCRIPTION	DATE	BY
1	SEE SHEET 1		

DATUM -E- REFERS TO CARRIER BOARD FROM PICMG AMC SPECIFICATION



$\varnothing 1.85 \pm 0.05$
 $\oplus \varnothing 0.05 \text{ (S) A E F}$
 -D-
 2 PLC

$\varnothing 2.8 \pm 0.05$
 $\oplus \varnothing 0.05 \text{ (S) A E F}$
 2 PLC

OPTIONAL HOLES FOR P/N'S
 2-1367703-1 AND 2--2
 3-1367703-1 AND 3--2

$\varnothing 0.4 \text{ REF}$
 $\oplus \varnothing 0.05 \text{ (S) C (S) D (S)}$
 198 HOLES
 SEE NOTE 3

\varnothing "A"
 $\oplus \varnothing 0.05 \text{ (S) C (S) D (S)}$
 2 HOLES

1.5
 41 PLC

1.5
 42 PLC

2.25
 27 PLC

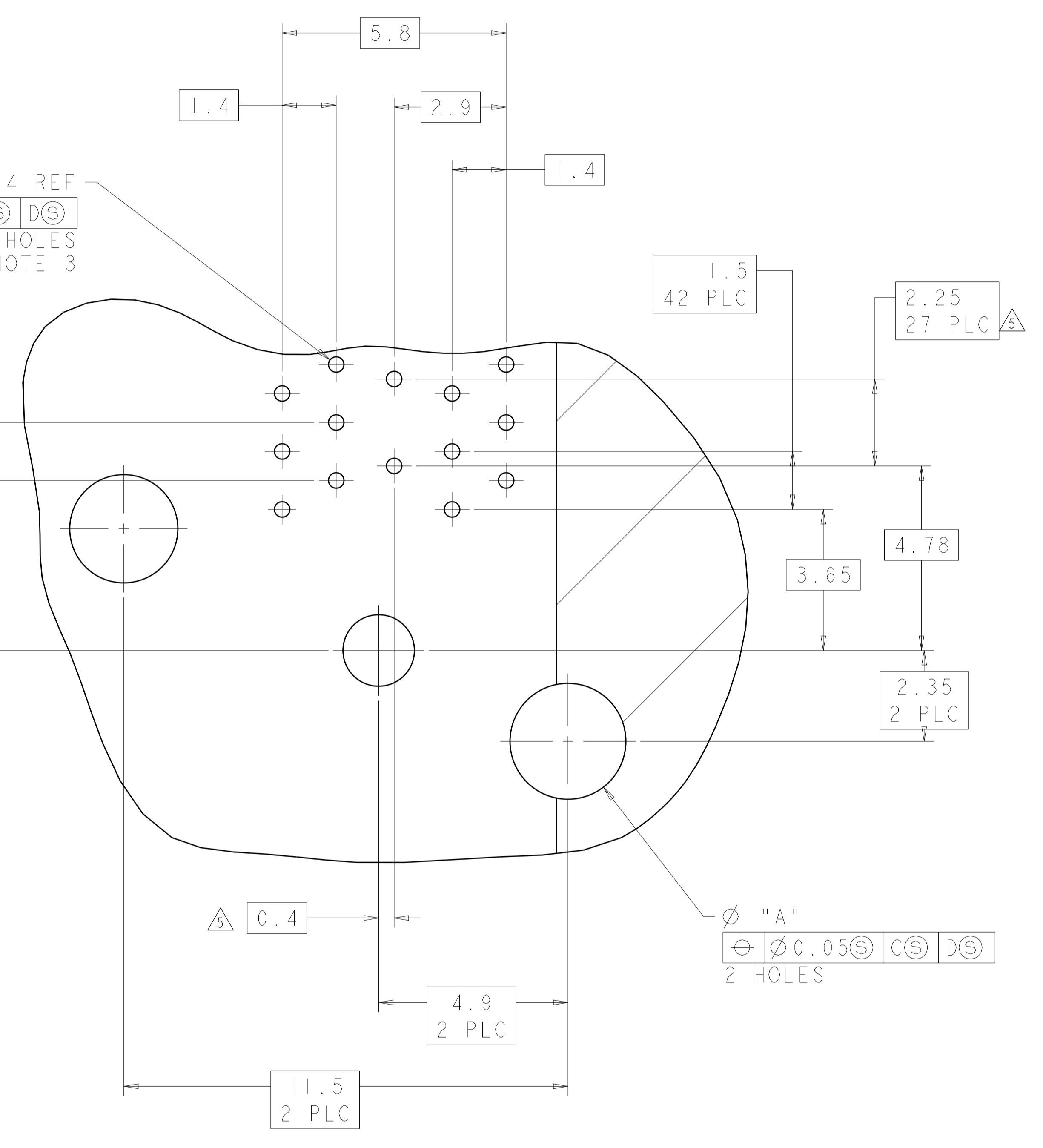
2.35
 2 PLC

0.4
 2 PLC

4.9
 2 PLC

11.5
 2 PLC

$\varnothing 1.85 \pm 0.05$
 $\oplus \varnothing 0.05 \text{ (S) A E F}$
 -C-



DETAIL X
 SCALE 12:1

RECOMMENDED P.C.B. CONFIGURATION

THIS DRAWING IS A CONTROLLED DOCUMENT.		OWN P. KERLIN 18FEB2005	TE Connectivity NAME AMC CONNECTOR, STYLE B+
DIMENSIONS:		CHK E. BRIGHT 18FEB2005	
TOLERANCES UNLESS OTHERWISE SPECIFIED:		APPD E. BRIGHT 18FEB2005	
mm		PRODUCT SPEC	
0 PLC ±		108-2277	SIZE
2 PLC ±		APPLICATION SPEC	CAGE CODE
3 PLC ±		114-13181	DRAWING NO
4 PLC ±		RESTRICTED CUSTOMER	A100779
ANGLES ±		SCALE	5:1
FINISH		SHEET	3 OF 3
MATERIAL		REV	A