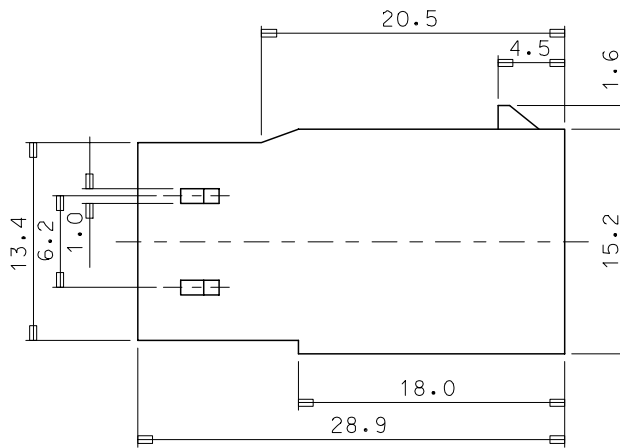
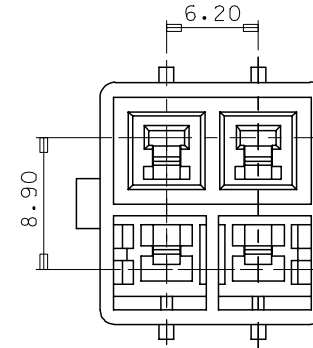
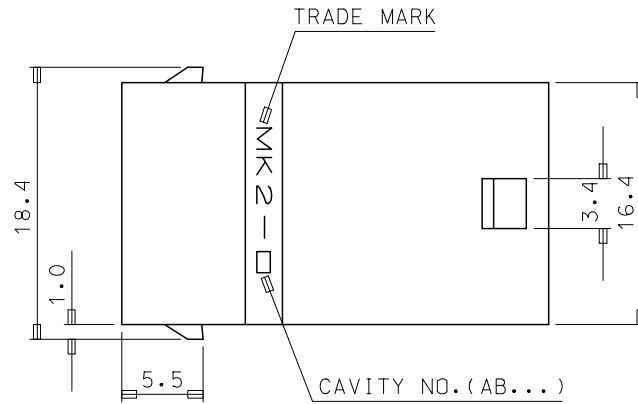


CIRCUIT NO.



NOTES

- MATED HOUSING: 35151-0410
- APPLICABLE TERMINAL: 35745-\*\*\*\* (1CKT)  
35746-\*\*\*\* (3CKT)  
35747-\*\*\*\* (2CKT)  
35748-\*\*\*\* (4CKT)
- APPLICABLE T.P.A: 35150-0290

NO	PRODUCT		MATERIAL	
	PART NO	MATERIAL NO	COLOR	DESCRIPTION
1	35150-0400	351500400	NATURAL	PBT
2	35150-0404	351500404	BLUE	(UL94V-0)
3	35150-0409	351500409	NATURAL	PBT/PC(UL94V-0)

REVISED	DESCRIPTION
EC NO: KOR2008-0048	2007/09/10
DRWN: JHPARK01	2007/09/10
CHKD: WYANG	2007/09/10
APPR: YUNSIKKIM	2007/09/10

QUALITY SYMBOLS	GENERAL TOLERANCES (UNLESS SPECIFIED)	
	mm	INCH
$\nabla=0$	4 PLACES $\pm$ ---	$\pm$ ---
$\nabla C=0$	3 PLACES $\pm$ ---	$\pm$ ---
	2 PLACES $\pm$ ---	$\pm$ ---
	1 PLACE $\pm 0.3$	$\pm$ ---
	ANGULAR $\pm 1^\circ$	
	DRAFT WHERE APPLICABLE MUST REMAIN WITHIN DIMENSIONS	

DIMENSION STYLE MM ONLY		SCALE 3:1	DESIGN UNITS METRIC	THIRD ANGLE PROJECTION
DRAWN BY WY.YANG	DATE	TITLE 6.2 PITCH W/W MALE HOUSING-4P		
CHECKED BY BK.CHOI	DATE	MOLEX INCORPORATED		
APPROVED BY	DATE			
MATERIAL NO.	DOCUMENT NO. SD-35150-0400	SHEET NO. 1 OF 01		
SIZE A3	THIS DRAWING CONTAINS INFORMATION THAT IS PROPRIETARY TO MOLEX INCORPORATED AND SHOULD NOT BE USED WITHOUT WRITTEN PERMISSION			