

4

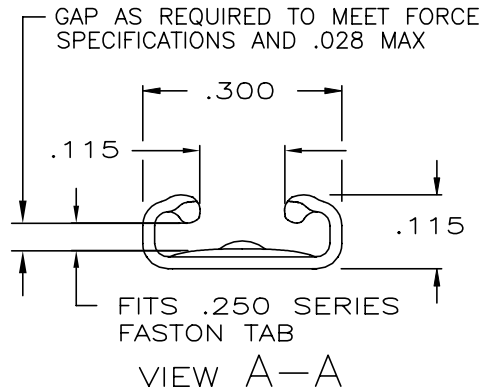
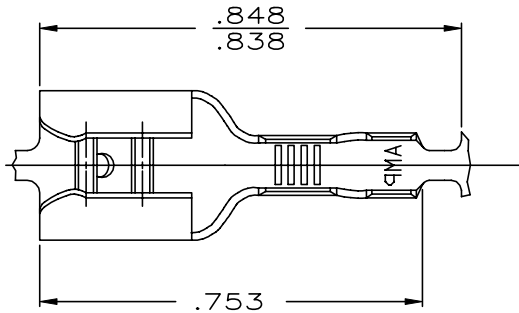
3

2

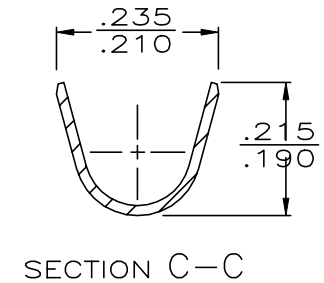
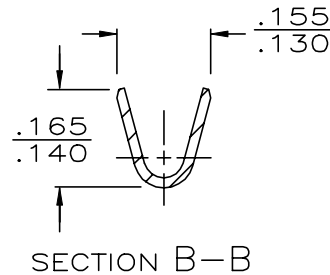
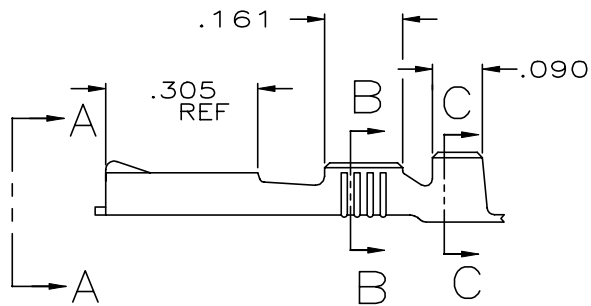
1

THIS DRAWING IS UNPUBLISHED. RELEASED FOR PUBLICATION
 © COPYRIGHT - By - ALL RIGHTS RESERVED.

LOC	DIST	REVISIONS			
P	LTR	DESCRIPTION	DATE	DWN	APVD
AF	50	U	REVISED PER ECR-12-013445	09NOV12	KH PD
		U1	REVISED PER ECR-20-009164	14JUL2020	MK DH



- 1 CONTINUOUS STRIP ON REELS.
- 2 MATING TAB THK IS .033-.030
- 3 WIRE SIZE IS #18-#14 AWG.
- 4 INSULATION RANGE IS .120-.170 DIA. ±.001
- 5 PRELIMINARY - NOT FOR PRODUCTION
- 6 REDUCED PACKAGE QUANTITY



TIN	.016±.001 BRASS	6 542660-6
NICKEL	.016±.001 STEEL	5 42660-5
PRE-TIN	.016±.001 BRASS	42660-4
TIN	BRASS	42660-2
	BRASS	42660-1
FINISH	MATERIAL	PART NO

DIMENSIONS:		TOLERANCES UNLESS OTHERWISE SPECIFIED:		DWN		TE Connectivity	
INCHES		0 PLC ± -		JR RUTH 4/17/86			
		1 PLC ± -		CHK 4/17/86			
		2 PLC ± -		G YETTER			
		3 PLC ± .015		APVD 4/17/86			
		4 PLC ± -		C MEYERS			
ANGLES ± -				NAME		RECEPTACLE FASTON™ .250 SERIES	
MATERIAL		FINISH		PRODUCT SPEC		DRAWING NO	
SEE ABOVE		SEE ABOVE		APPLICATION SPEC		CAGE CODE	
				WEIGHT		DRAWING NO	
				CUSTOMER DRAWING		A3 00779 C=42660	
				SCALE		SHEET	
				NTS		1 of 1	
						REV	
						U1	